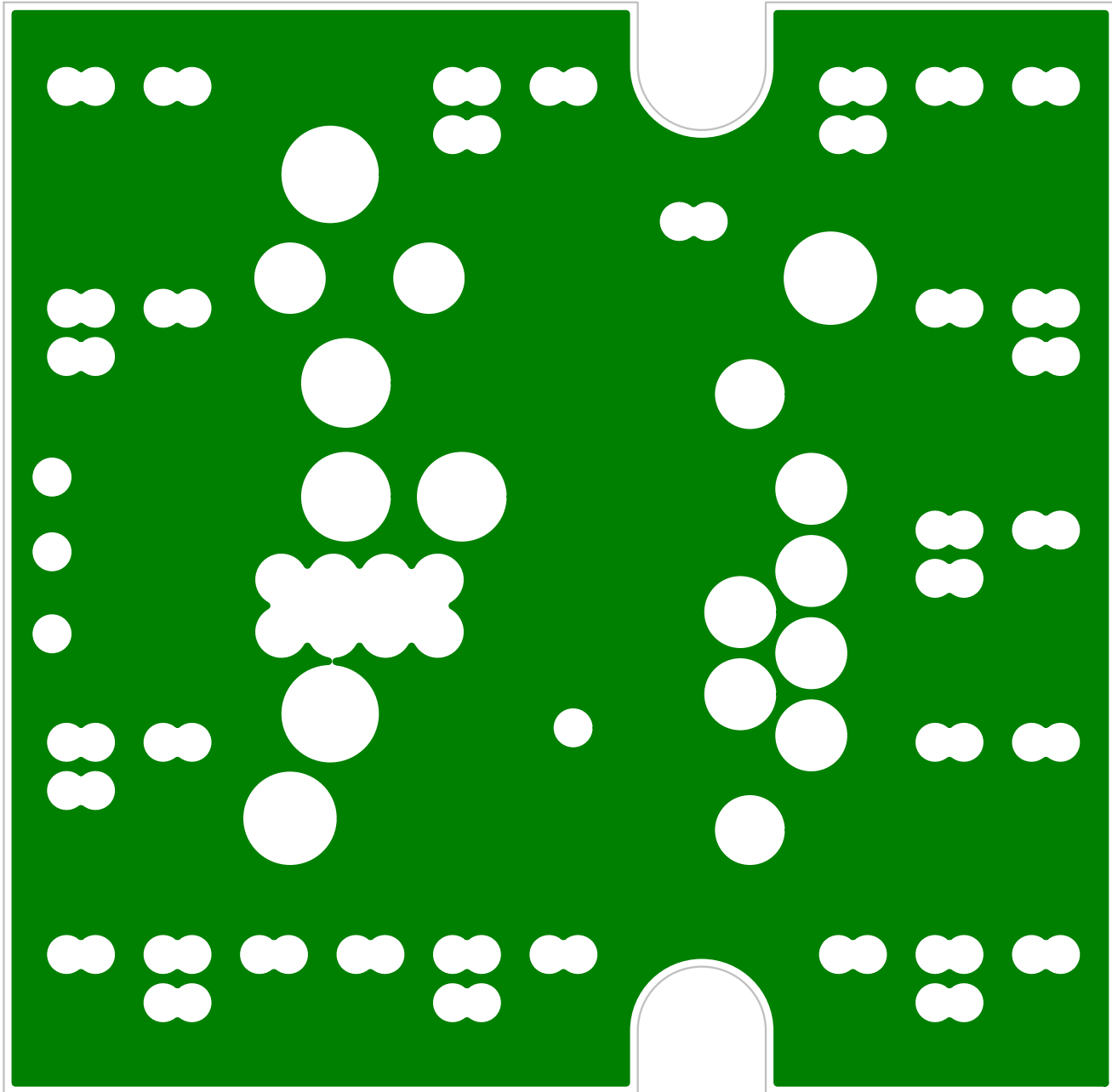
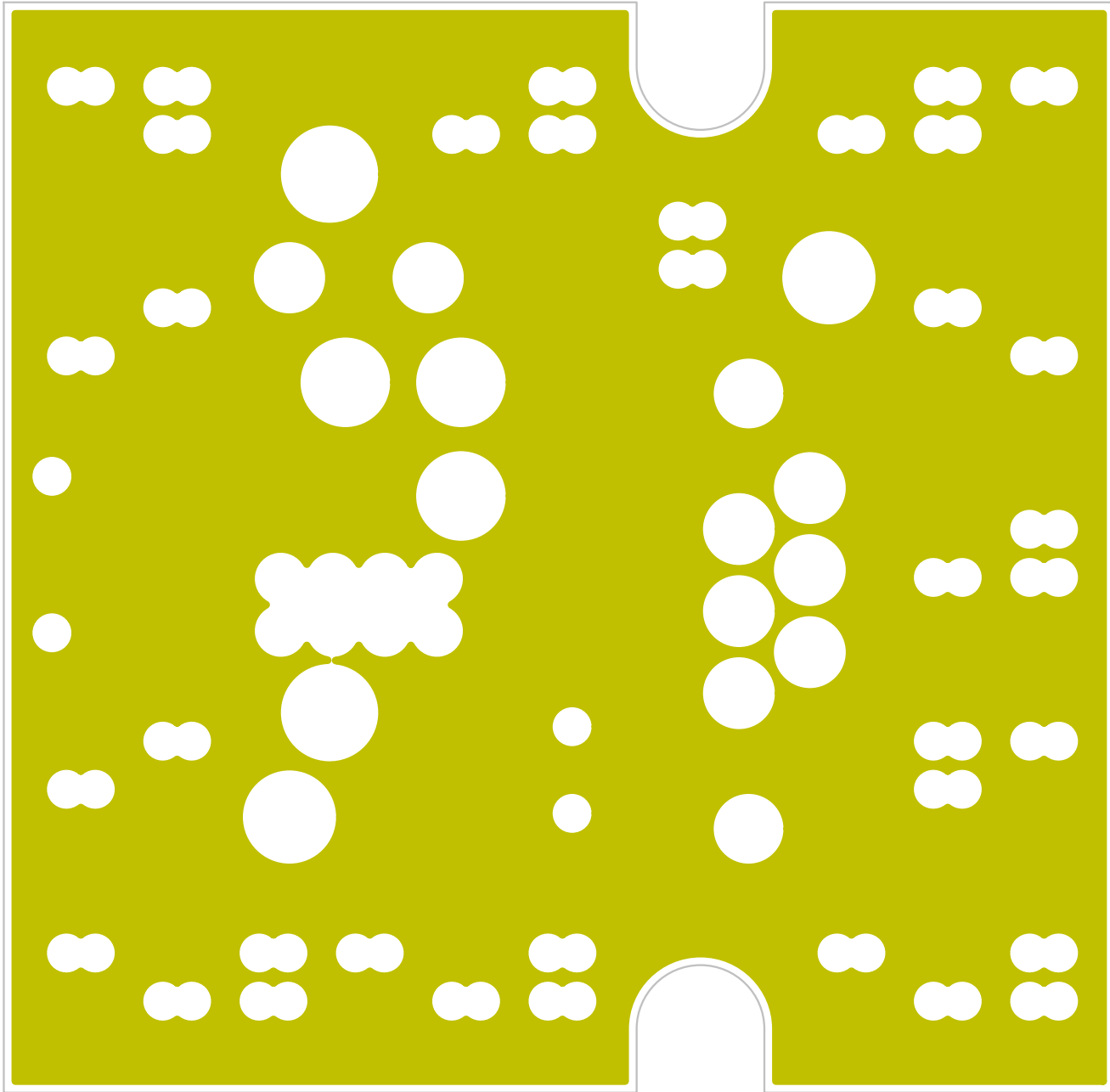


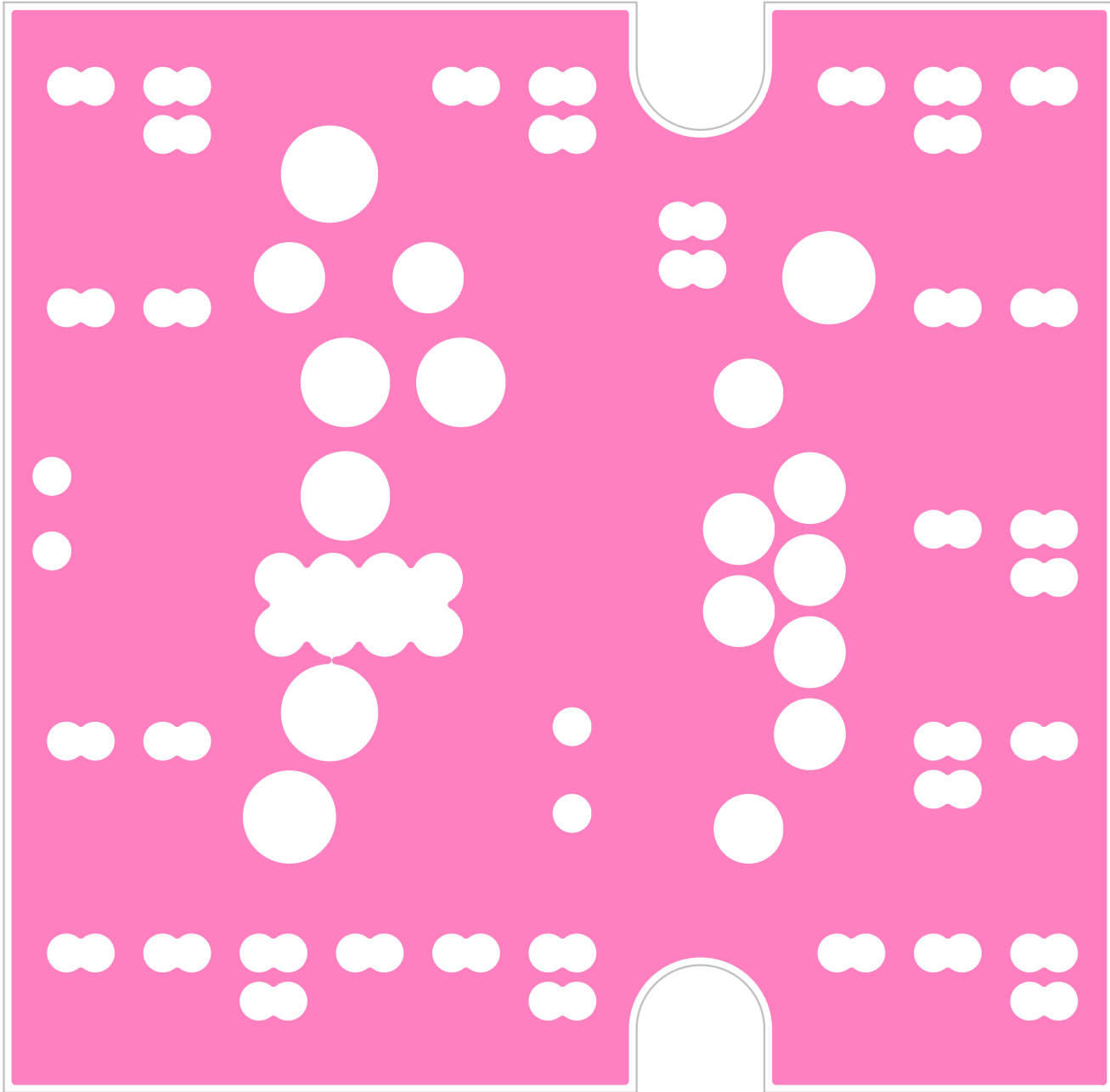
RAW1+



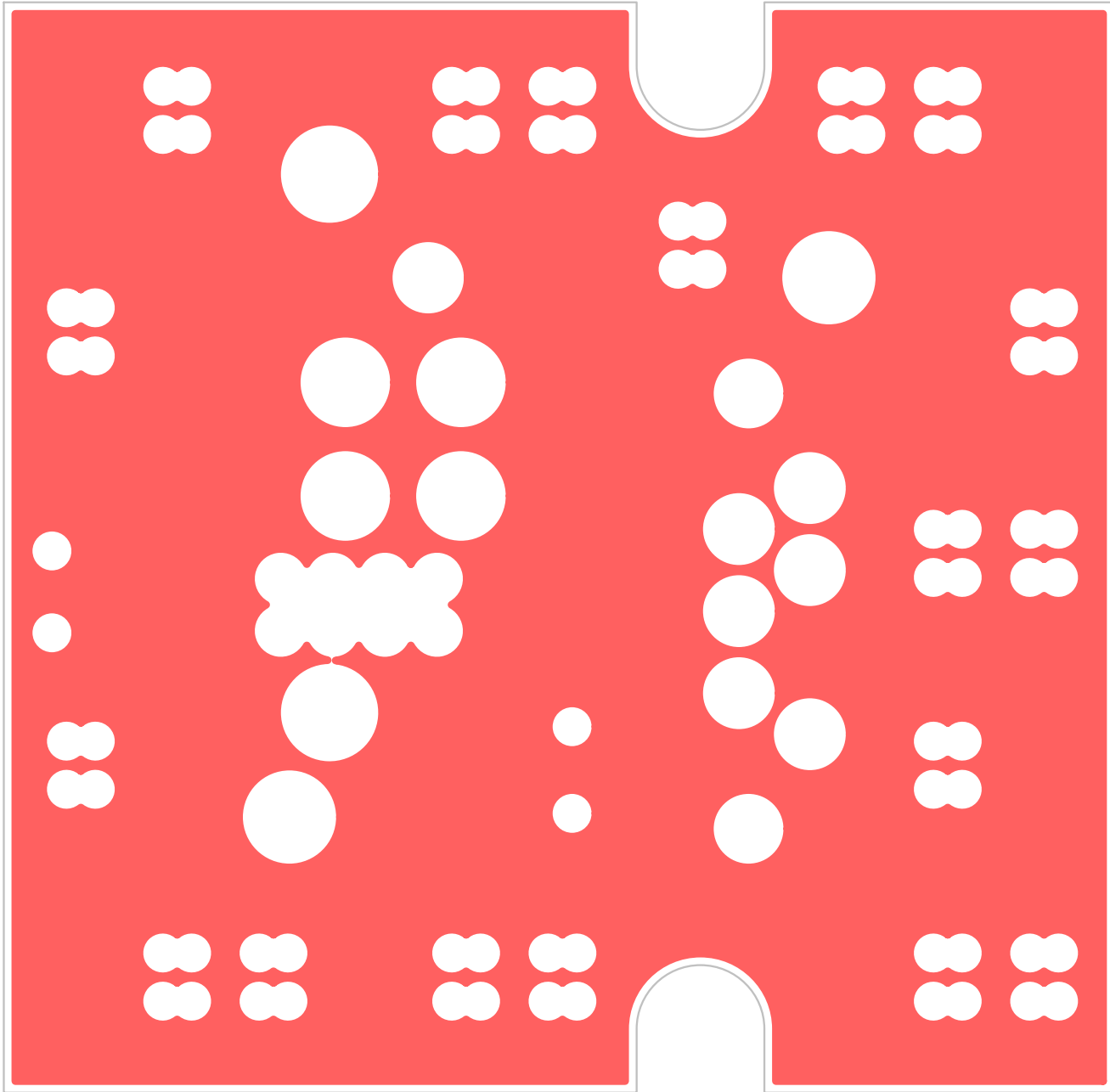
RAW1-



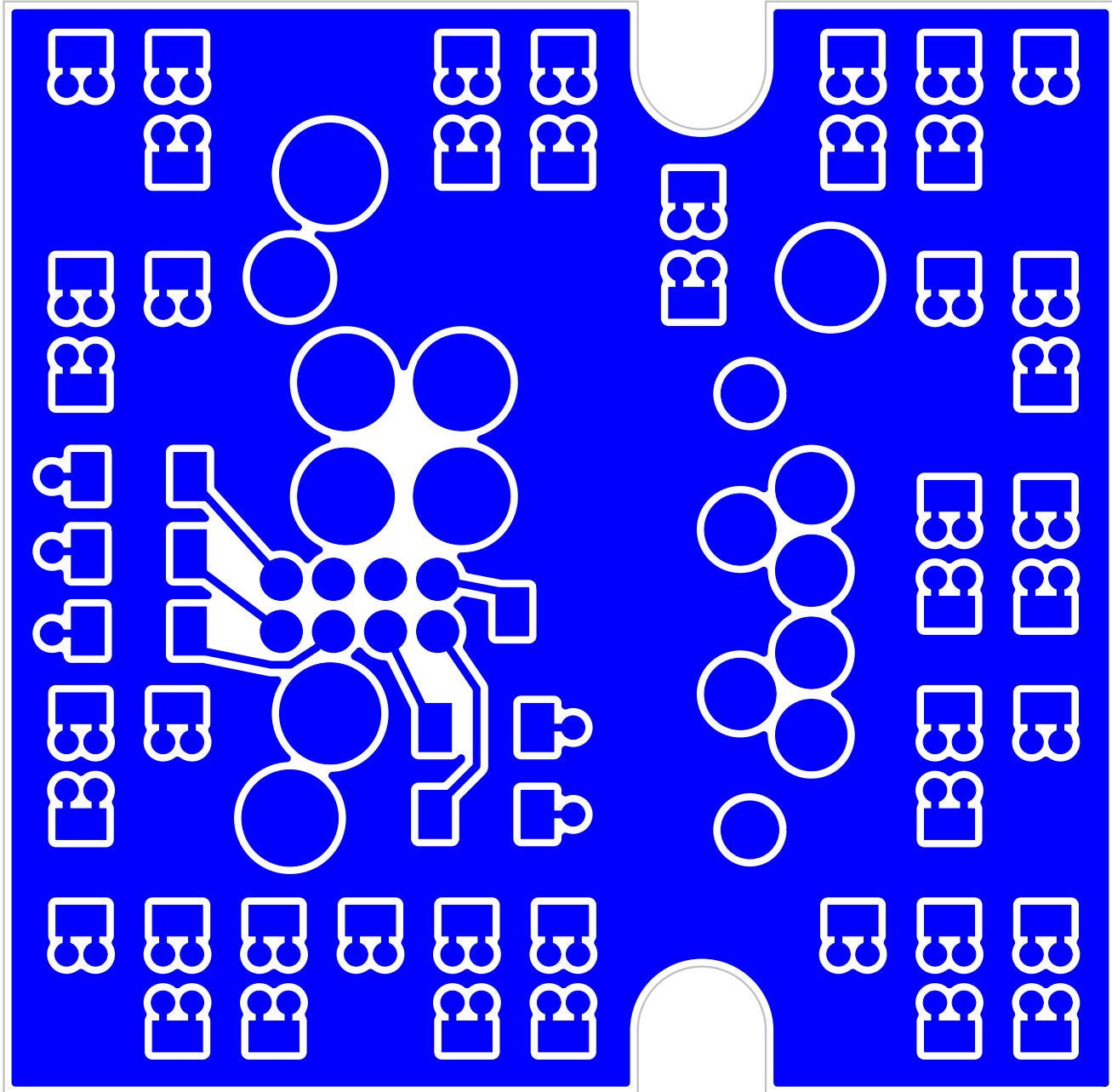
RAW2+

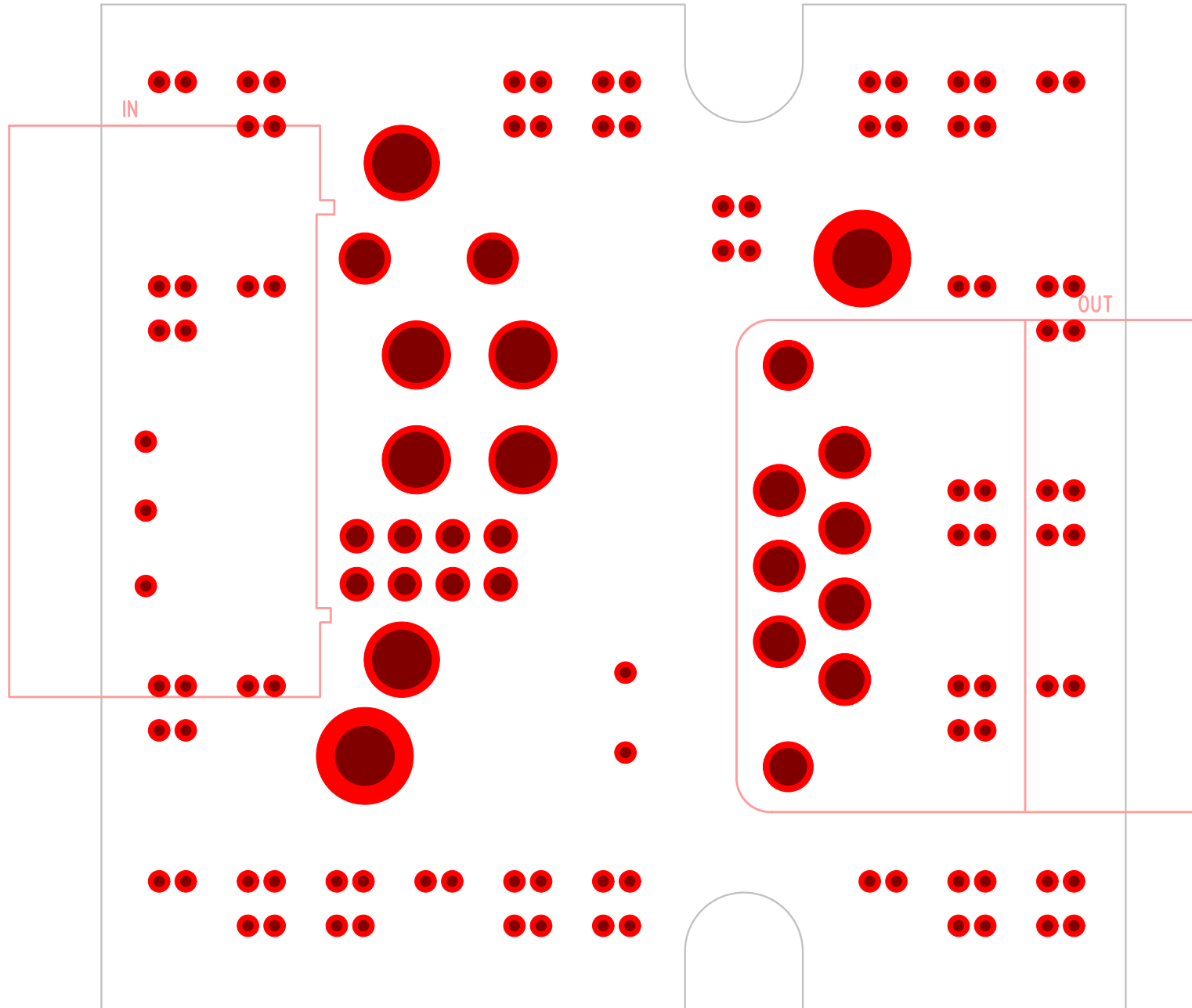


RAW2-

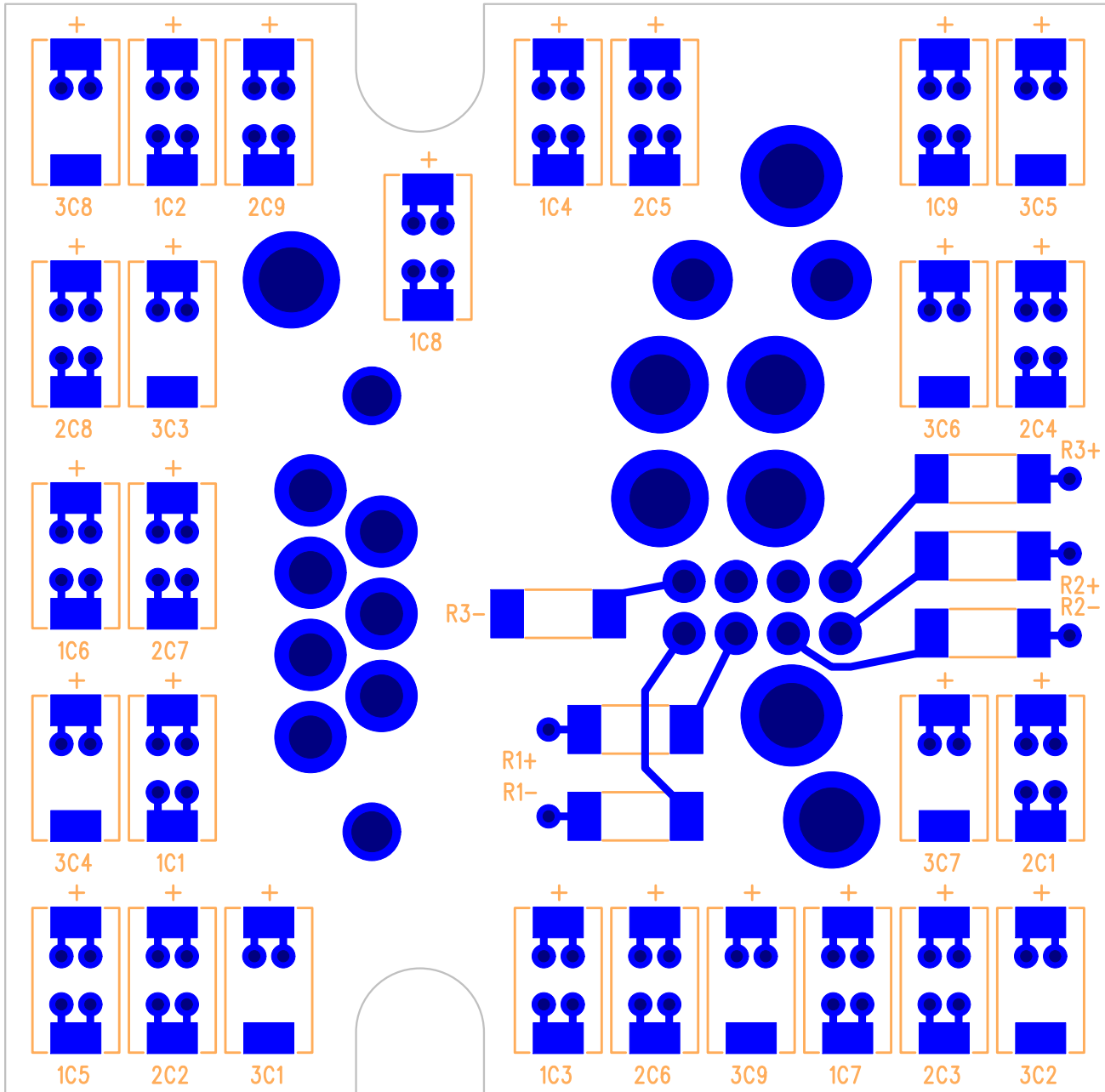


RAW3+

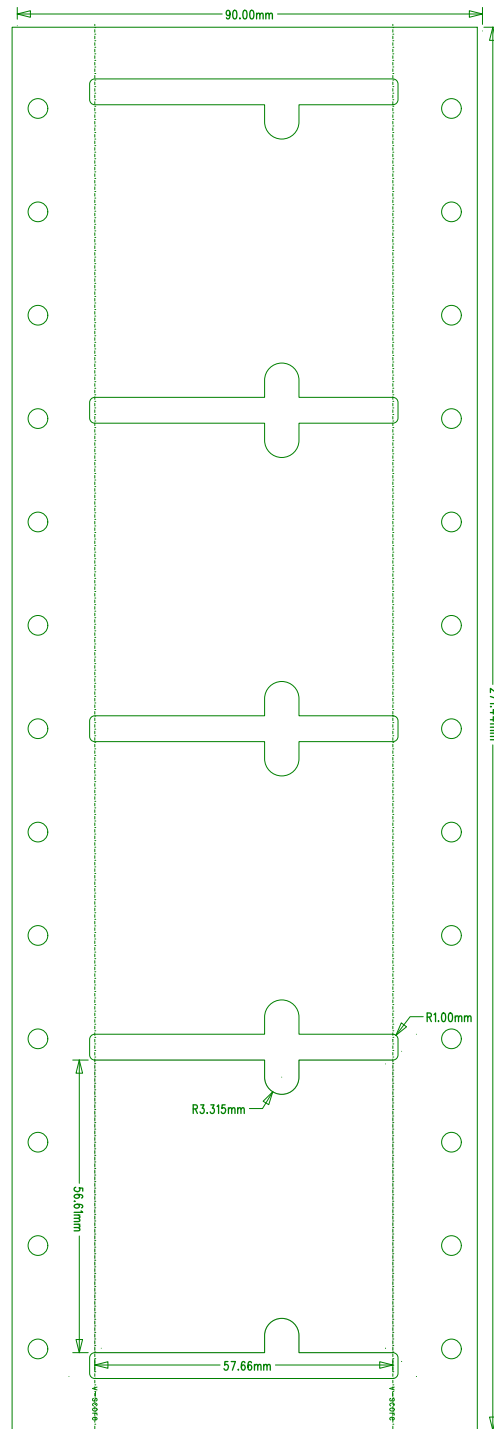




assembly drawing top



assembly drawing bottom



overall thickness = 62.5 mils after ENIG plating, ignoring soldermask
 board material = FR4 180 C Tg
 soldermask color = red
 silkscreen color = white
 plating = ENIG
 individual board dimensions = 57.66mm * 56.6mm
 panel dimensions are 90.00mm * 271.44mm
 board-outline.gerber - shows outline of individual board
 gap between boards is 5mm
 150 mil tooling holes on frame are on 20 mm grid

panelization