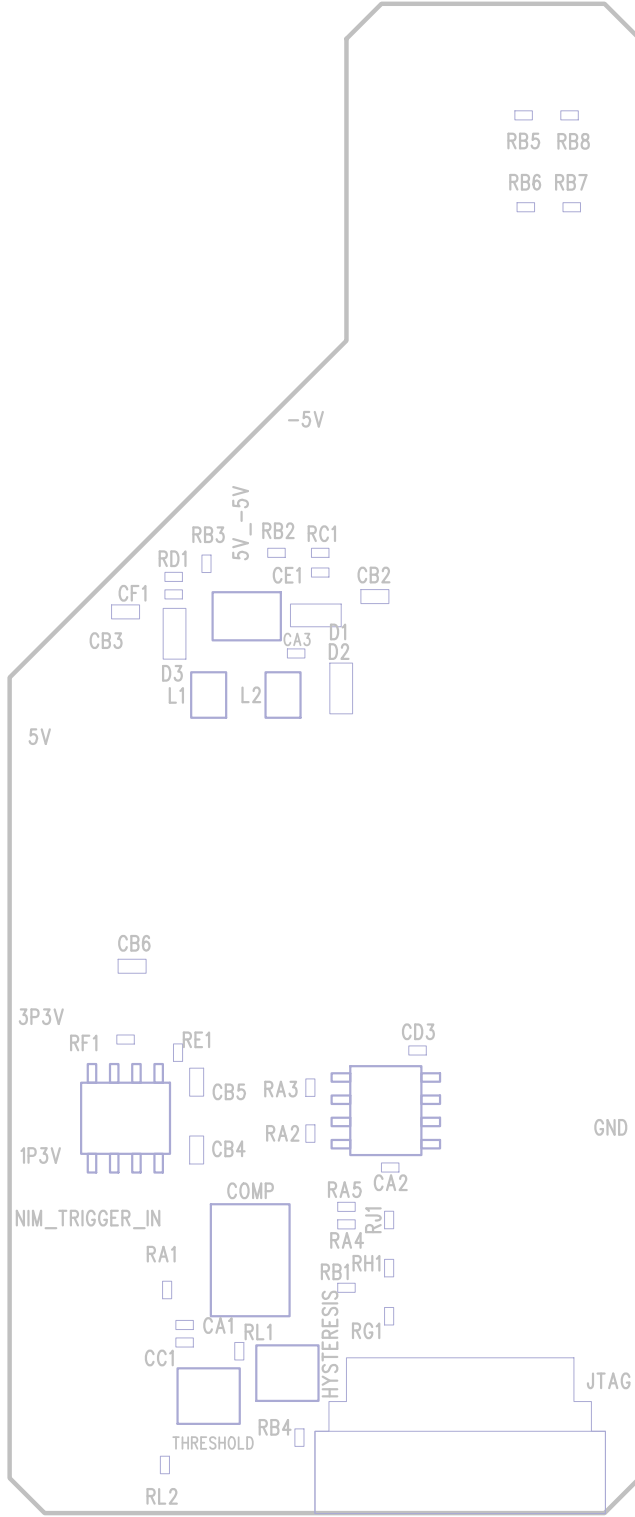
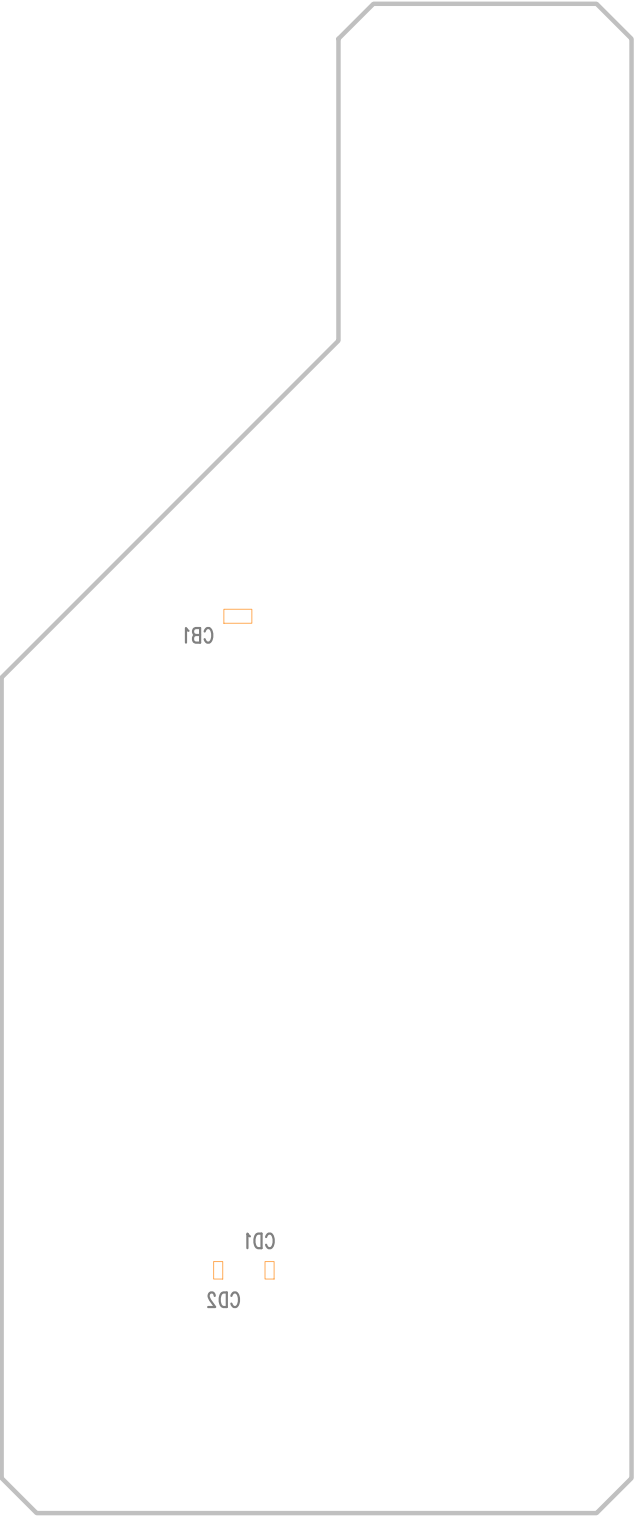


install all 0.1" connectors on bottom of board except for H1

top: 11 mil traces; 8 mil space between; 12 mils clearance to rest  
 100 Ohms coupled microstrip with ground surround

top: 13 mil trace; 5 mil space; 50 Ohms grounded coplanar waveguide





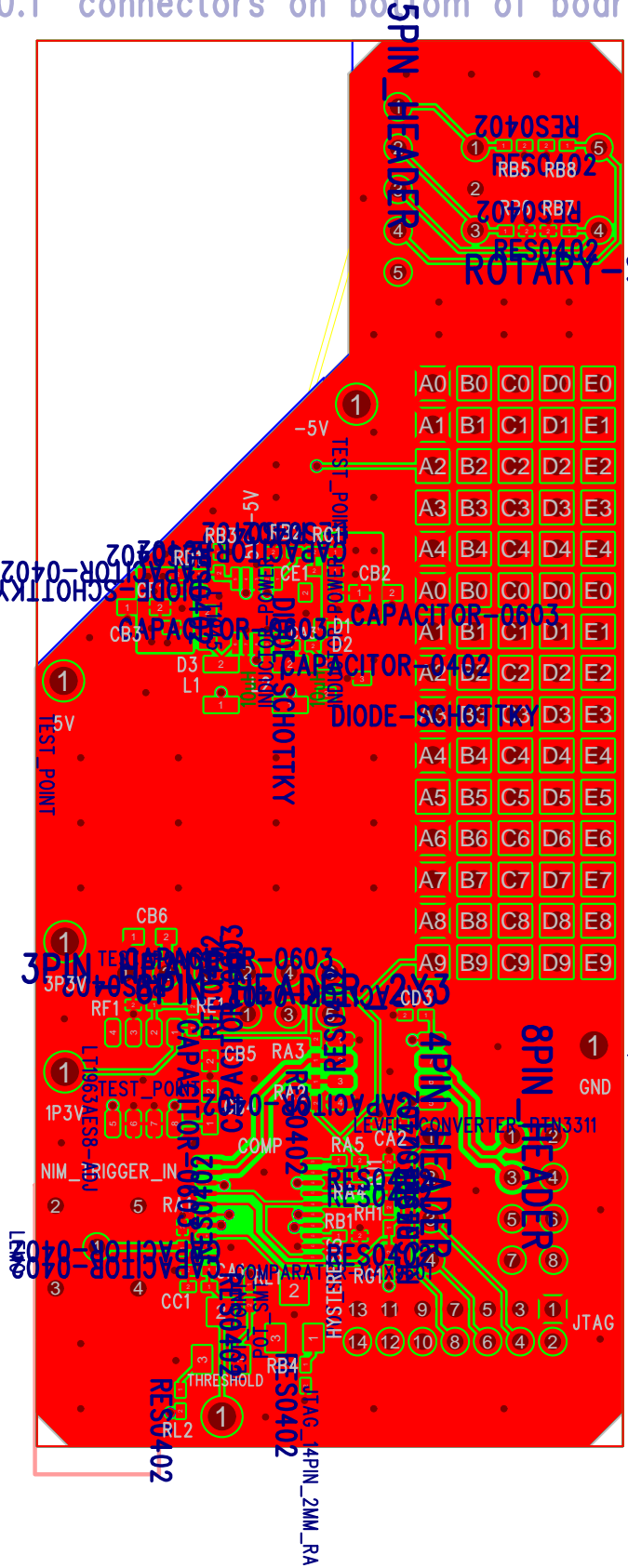
CBI

CD1  
CD2

install all 0.1" connectors on bottom of board except for H1

top: 11 mil traces; 8 mil space between; 12 mils clearance to rest  
 100 Ohms coupled microstrip with ground surround

top: 13 mil trace; 5 mil space; 50 Ohms grounded coplanar waveguide



ROTARY SWITCH-CONNECTOR

TEST\_POINT

top 1.4 mil copper  
 15 mil dielectric  
 1.4 mil copper  
 27 mil dielectric  
 1.4 mil copper  
 15 mil dielectric  
 bottom 1.4 mil copper