

Outline:

Review of former designs

Current Kohriki-san envelope

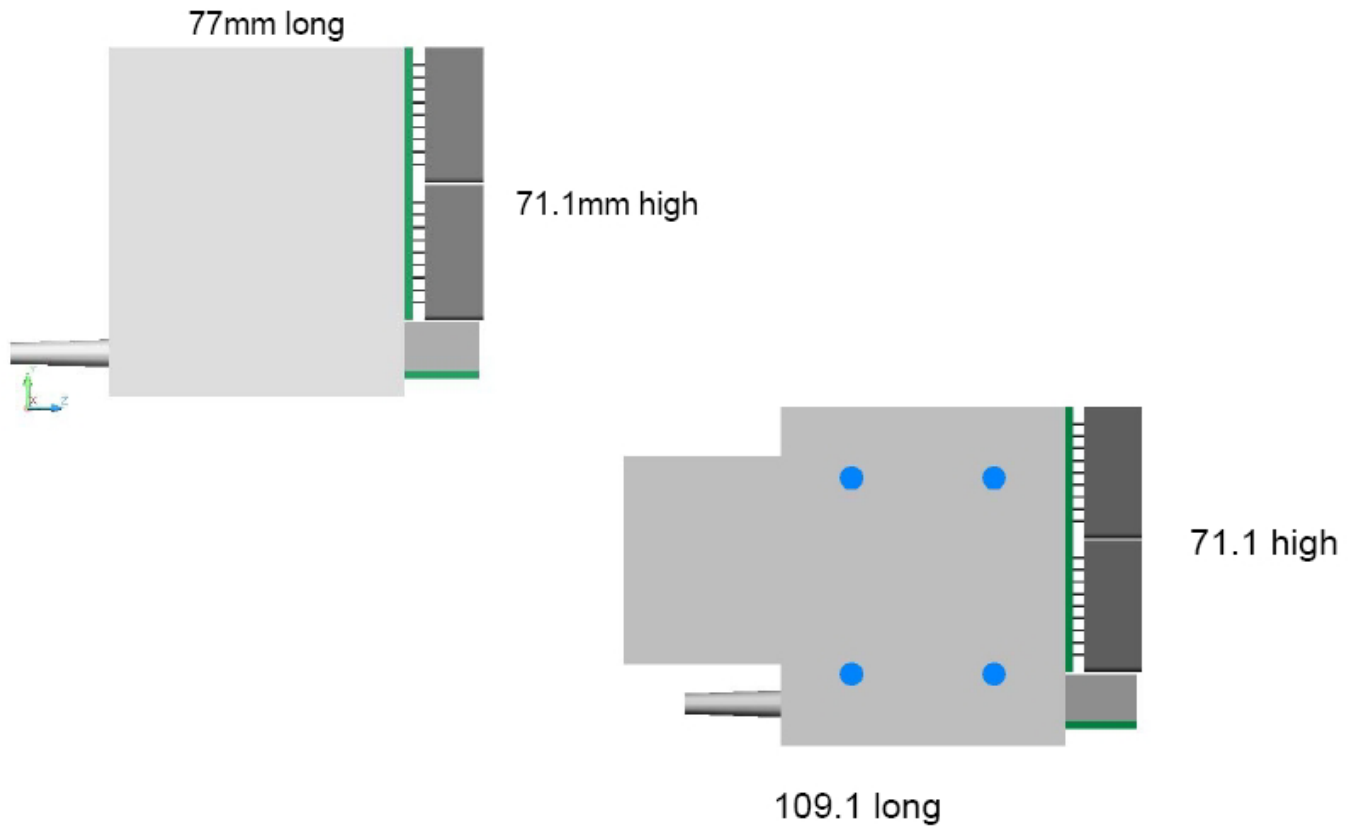
Beam test electronics (for comparison)

Beam test positioning fixture (what to do?)

Summary

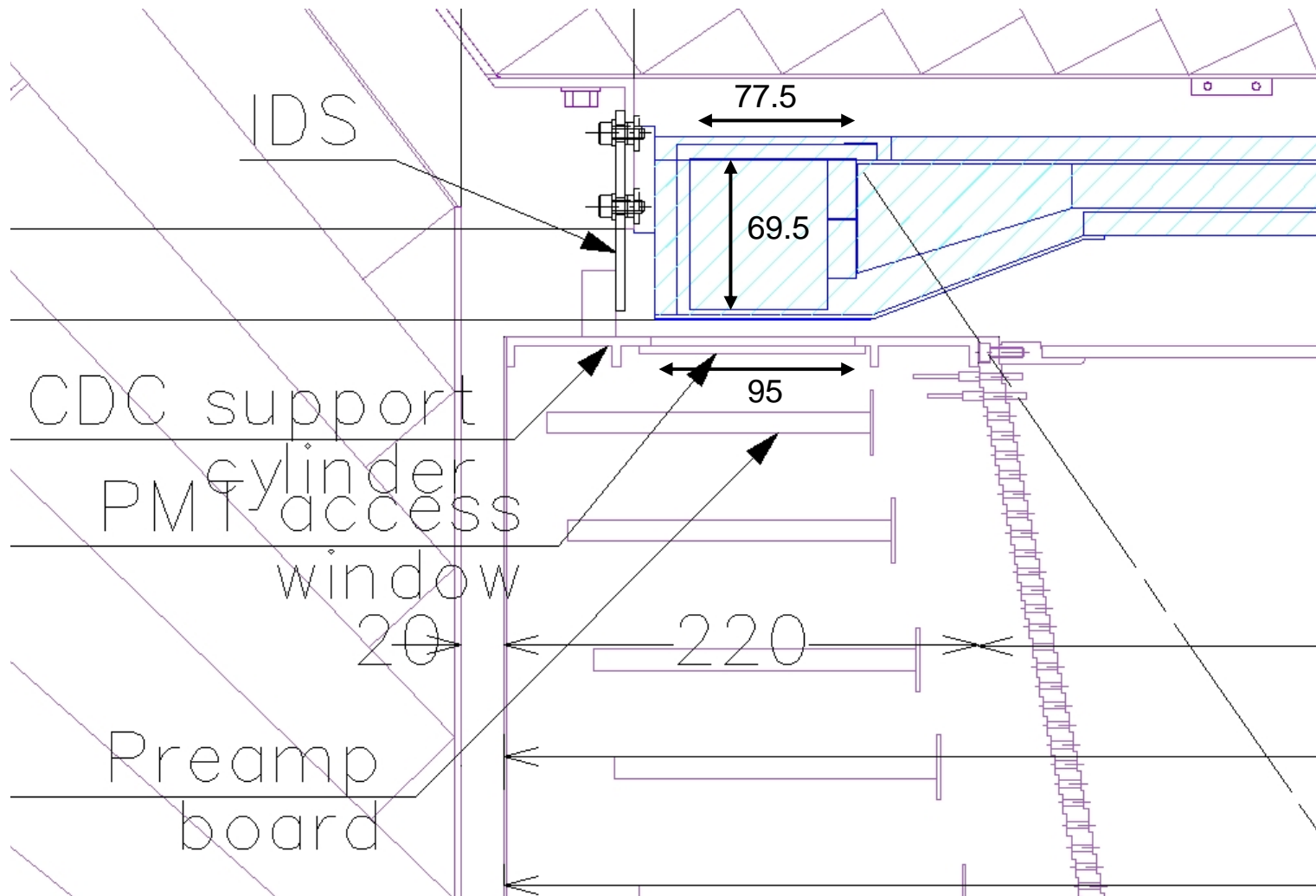
Outline:

Review of former designs (presented March 24, 2011)



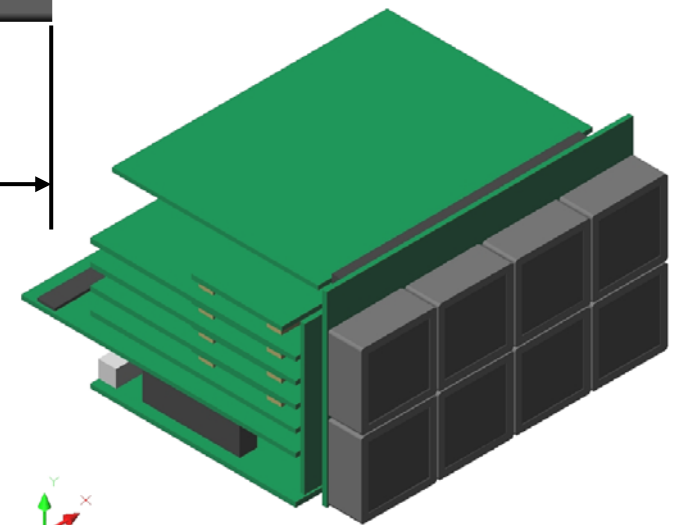
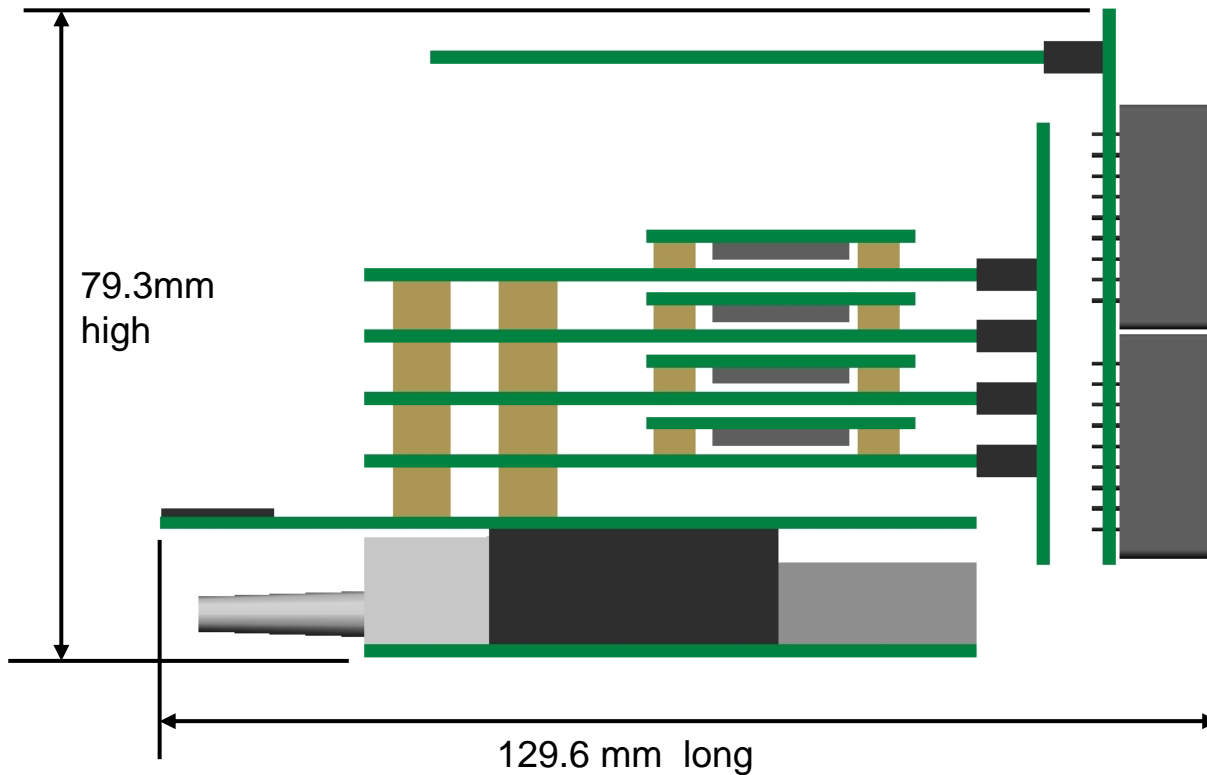
Outline:

Current Kohriki-san envelope

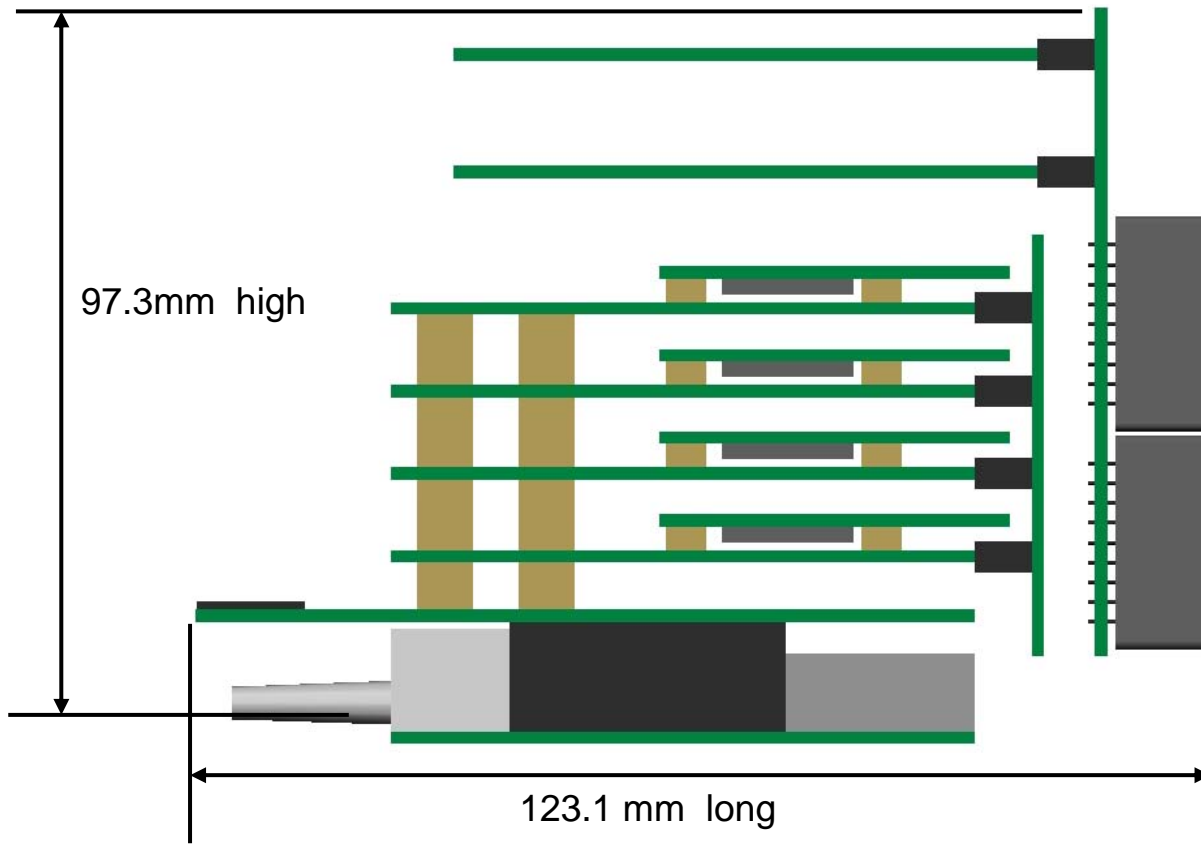


Outline: Beam test electronics (for comparison)

This model was originally presented on June 27th.



Outline: Beam test electronics (for comparison)

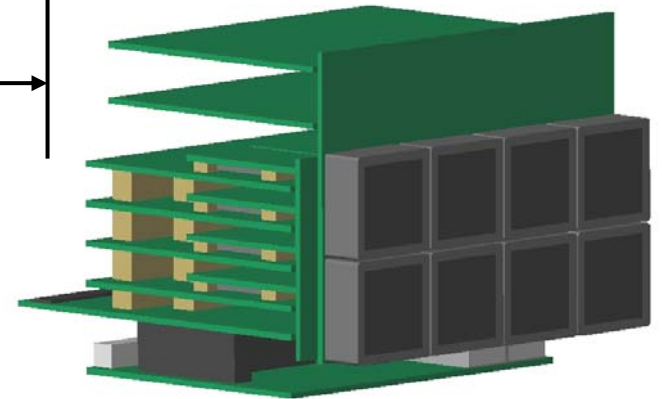


This model was updated on July 7th.

Inter board connectors have increased from 6 to 9mm.

The 2nd HV board would be a worst case scenario.

Compared to the previous model, height has increased by 18mm, and length has increased by .5mm.



Outline: Beam test positioning fixture (what to do?)

Summary: What do we present on Wednesday?