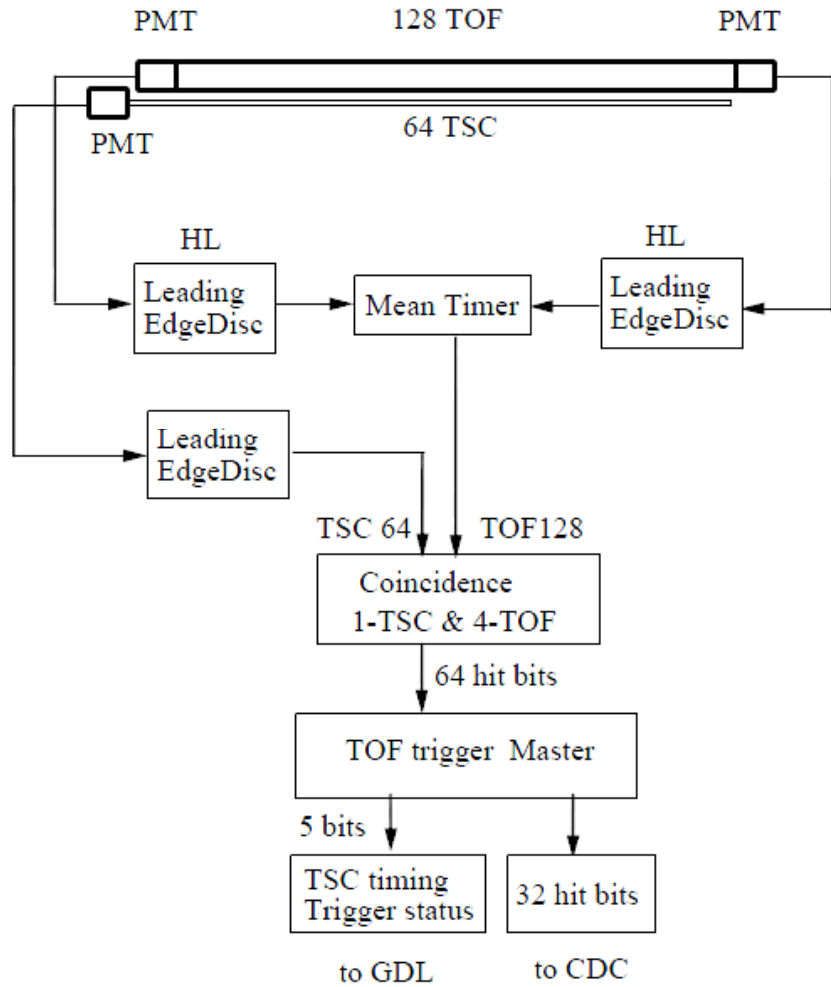
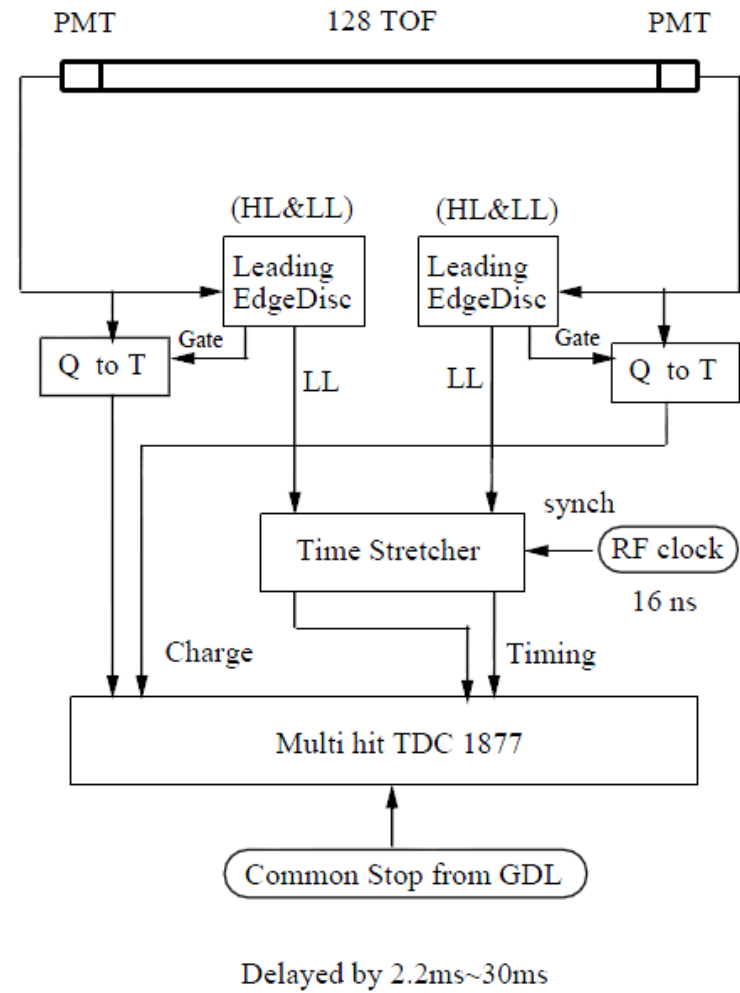


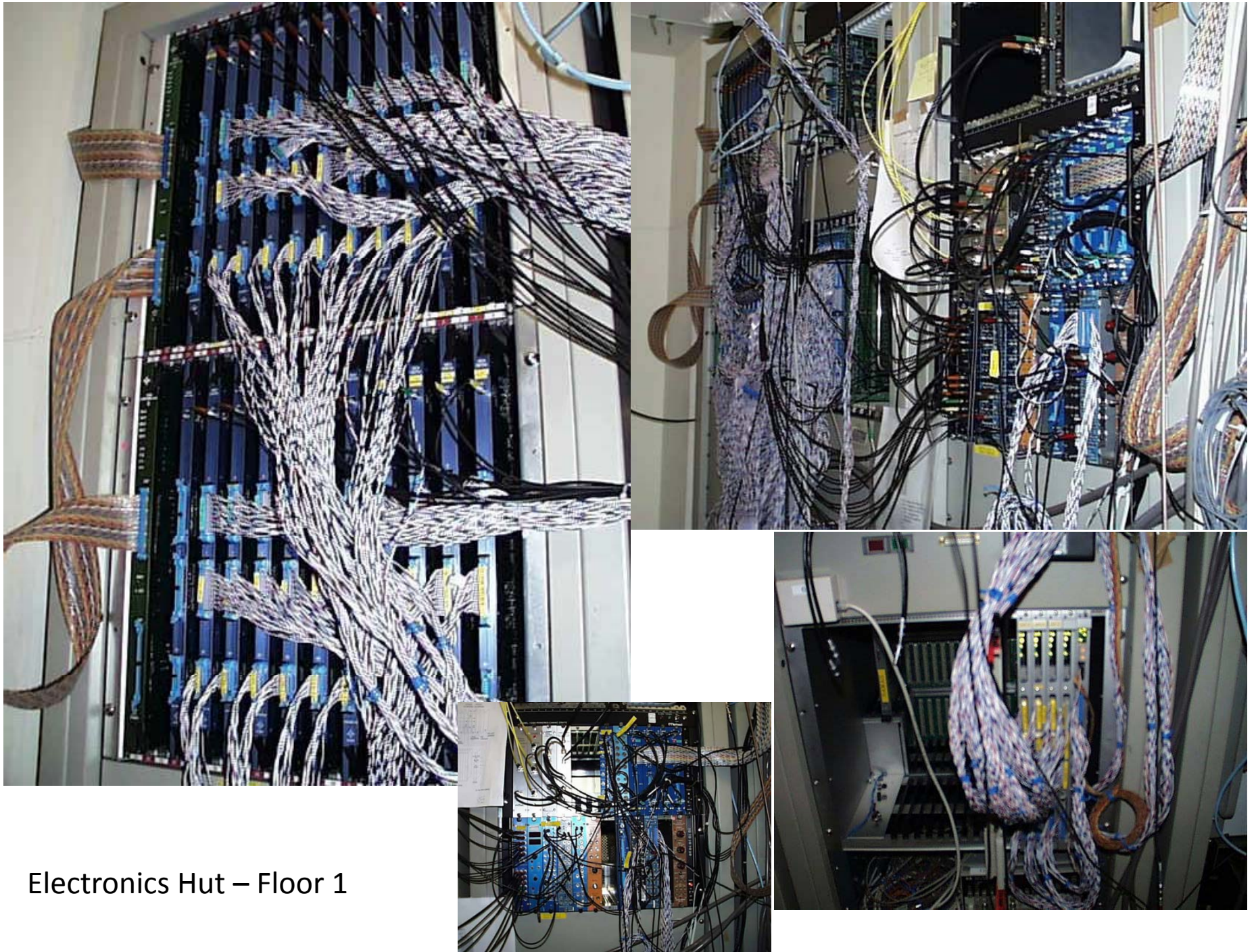
(a) TSC Trigger = TSC & TOF(mean time)



(b) TOF Signal readout



TOF Electronics – status as of the End (MTS1877 → COPPER TMC readout)

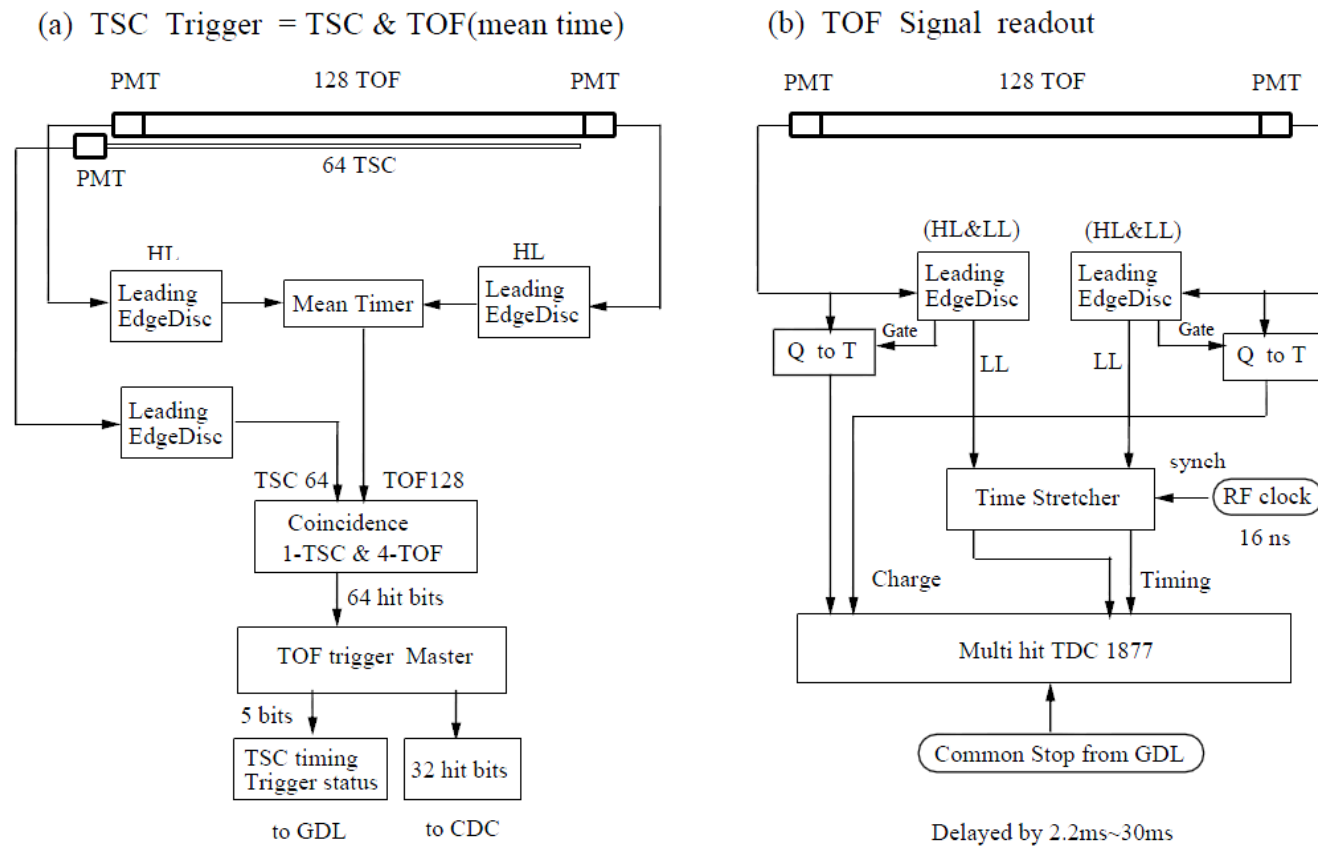


Electronics Hut – Floor 1



Electronics Hut – Floor 2

What to keep? (Discussion)



- Trigger ?
- HV if possible?
- TOFFEE aren't easy to re-use
- Have no need for TSCs...