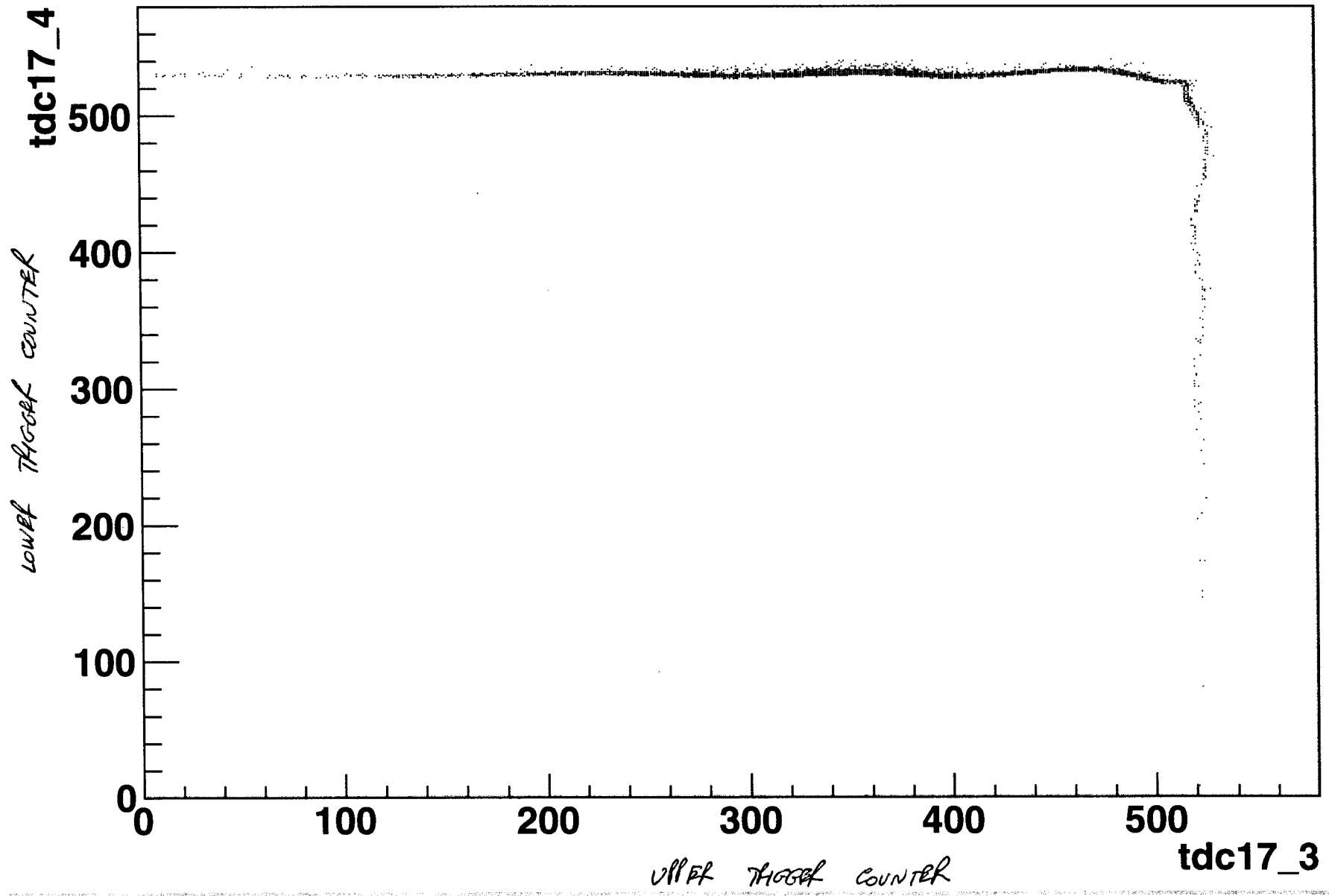


COSMIC - RUN 80. FOOT

tdc17_4:tdc17_3 {tdc17_3<700}

16626 ENTRIES

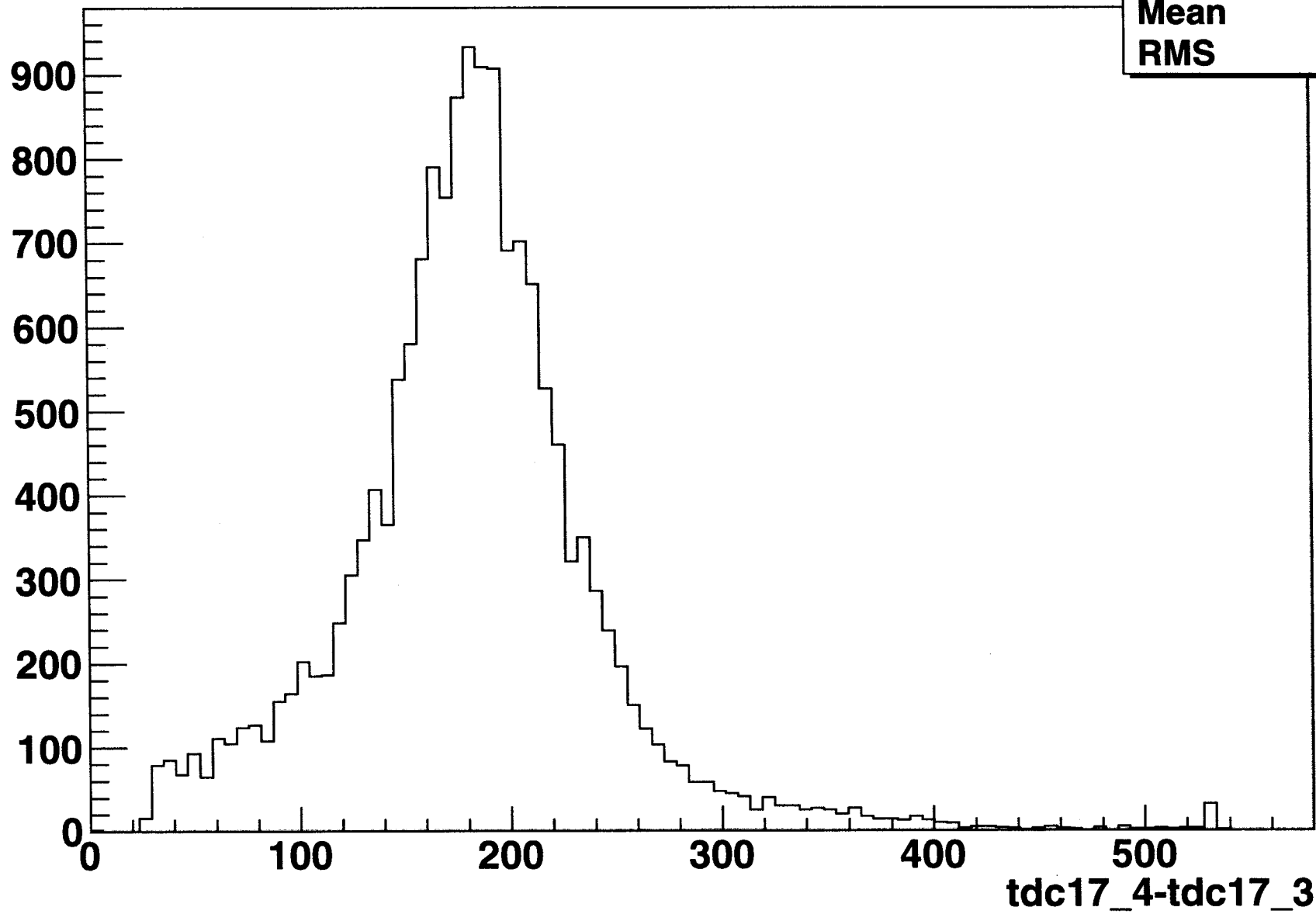


$181.6 \times .025 \text{ ns} = 4.54 \text{ ns} \times 30 \text{ cm/ns} = 136.2 \text{ cm}$

9/10/10

tdc17_4-tdc17_3 {tdc17_3<500}

htemp	
Entries	16167
Mean	181.6
RMS	61.32



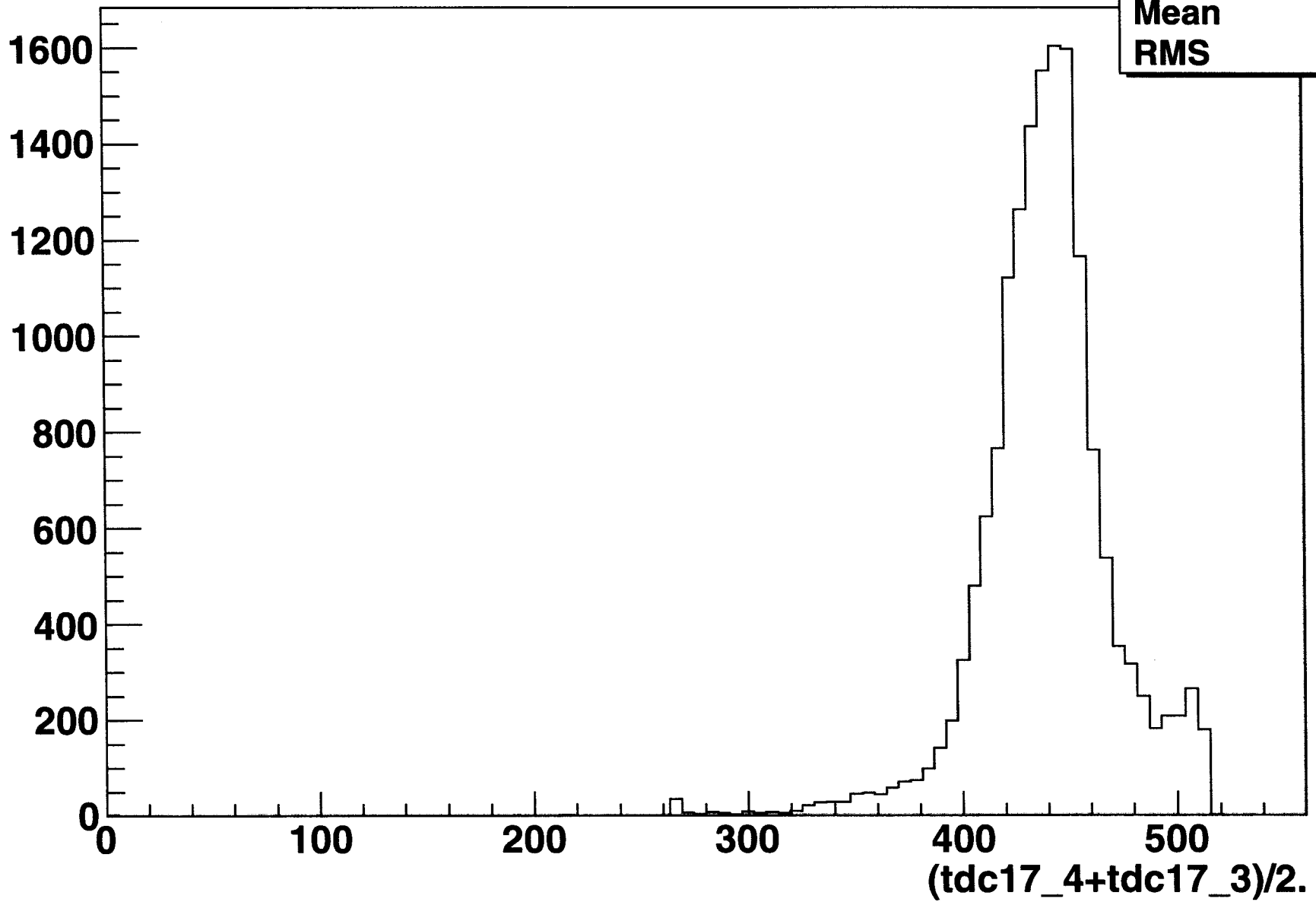
tdc17_4-tdc17_3

9/10/10

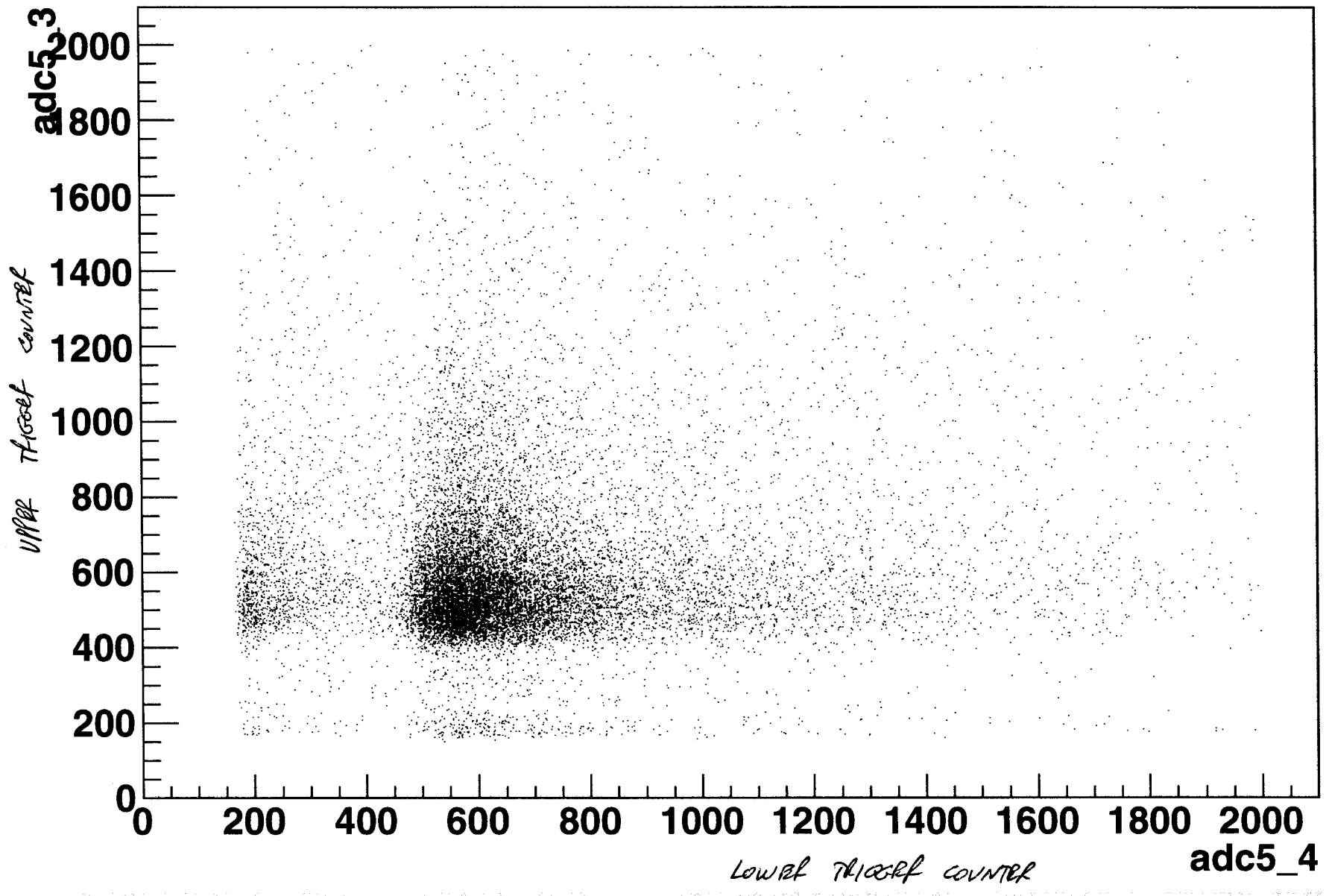
MEAN trigger time RMS = 31.36 x .025 ns = .784 ns

(tdc17_4+tdc17_3)/2. {tdc17_3<500}

htemp	
Entries	16167
Mean	439.6
RMS	31.36



adc5_3:adc5_4 {tdc17_3<500&&adc5_4<2000&&adc5_3<2000}



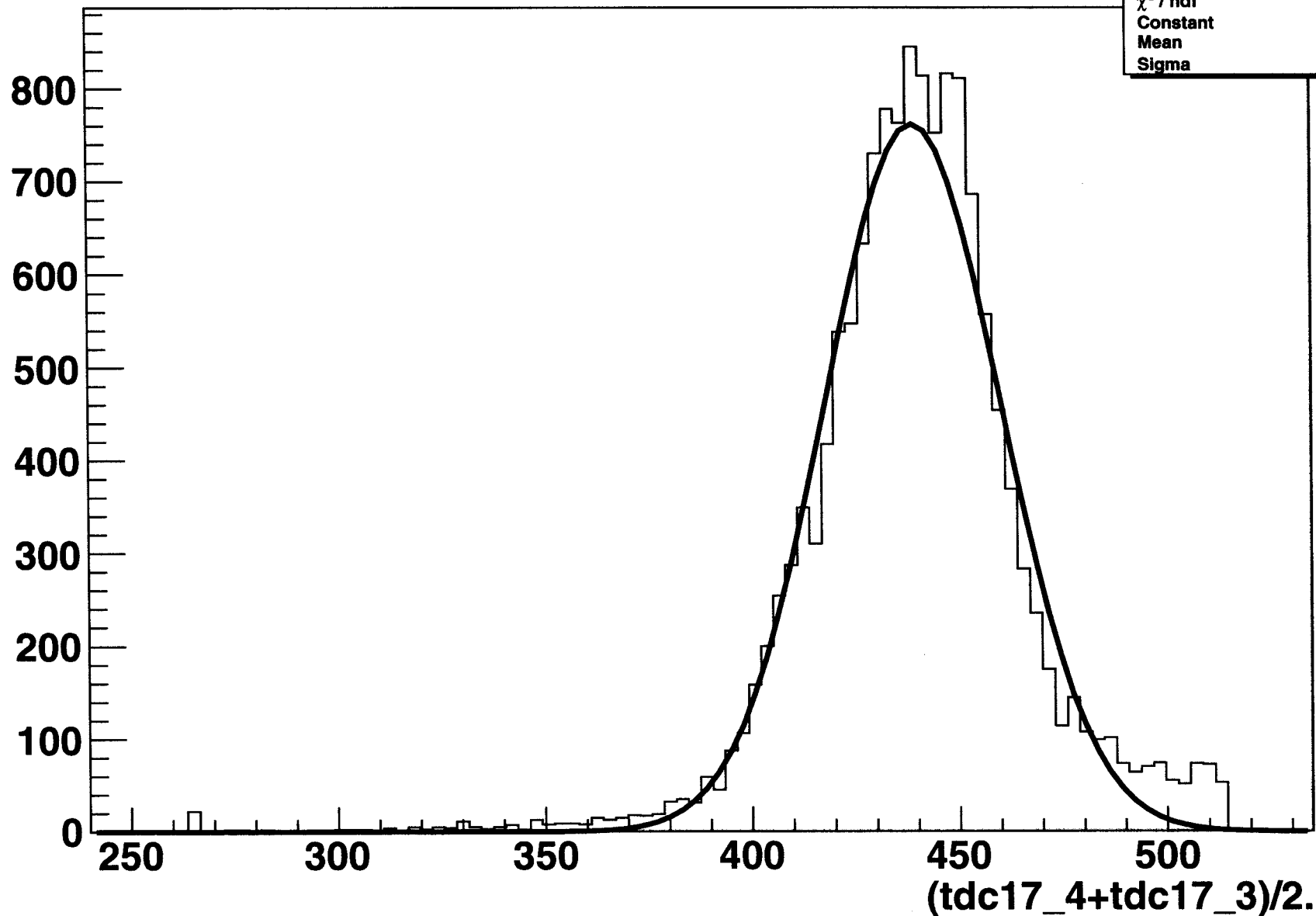
C29

9/16/10

MEAN TRIGGER TIME $\sigma = 91.21 \times 0.25 \text{ ns} = .530 \text{ ns}$

$(\text{tdc17_4} + \text{tdc17_3})/2. \{ \text{tdc17_3} < 500 \&\& \text{adc5_4} > 300 \&\& \text{adc5_3} > 300 \}$

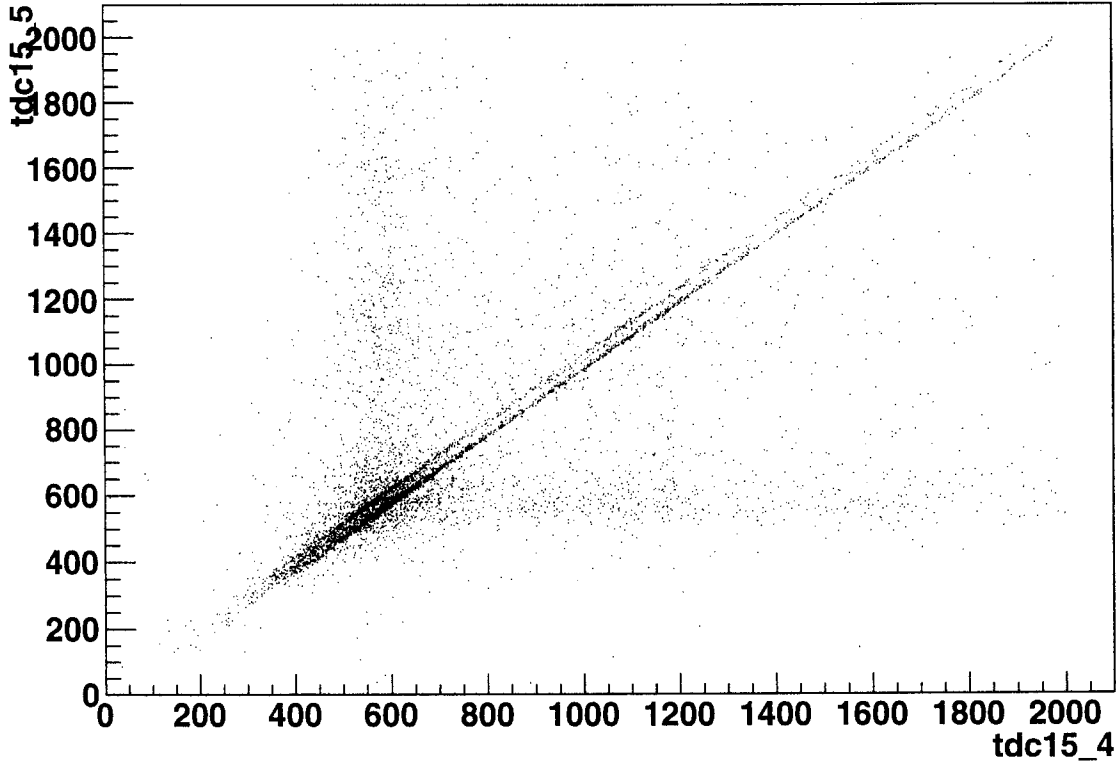
htemp	
Entries	14546
Mean	439.5
RMS	26.57
χ^2 / ndf	815.1 / 80
Constant	761.9 ± 9.0
Mean	439.1 ± 0.2
Sigma	21.21 ± 0.17



SAME PMT, ADJACENT CHANNELS

tdc15_5:tdc15_4 {tdc15_5<2000&&tdc15_4<2000}

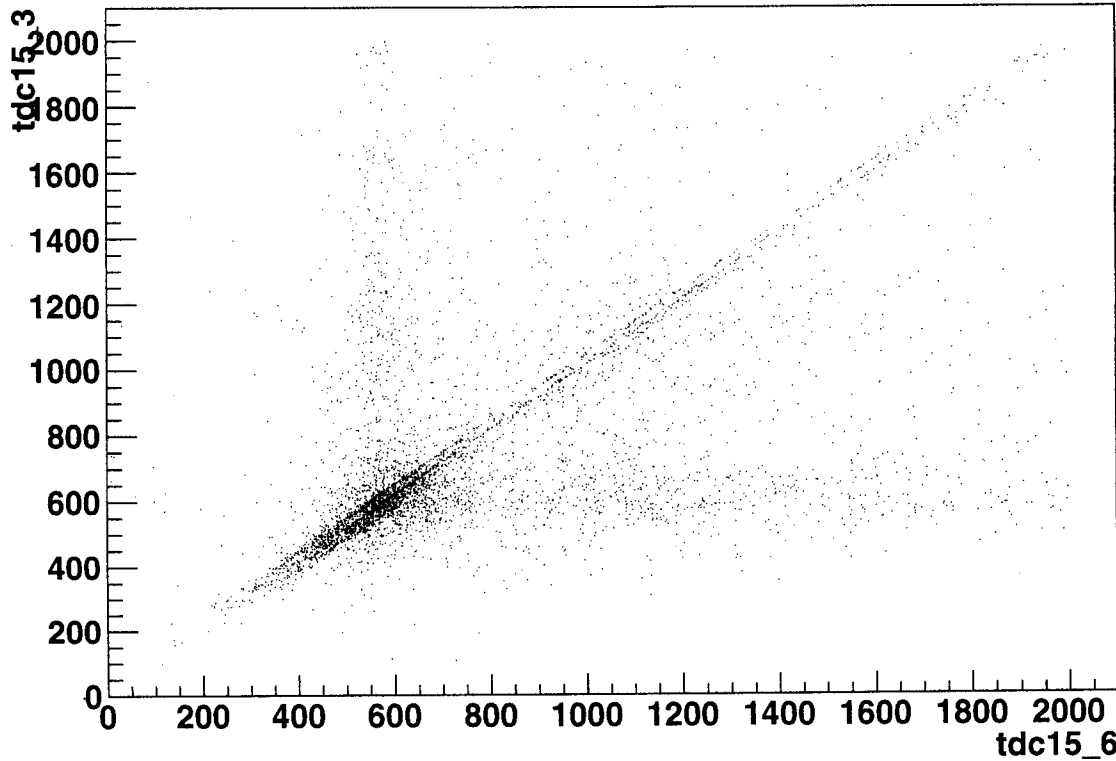
7439 ENTRIES



SAME PMT, NON-ADJACENT CHANNELS

tdc15_3:tdc15_6 {tdc15_3<2000&&tdc15_6<2000}

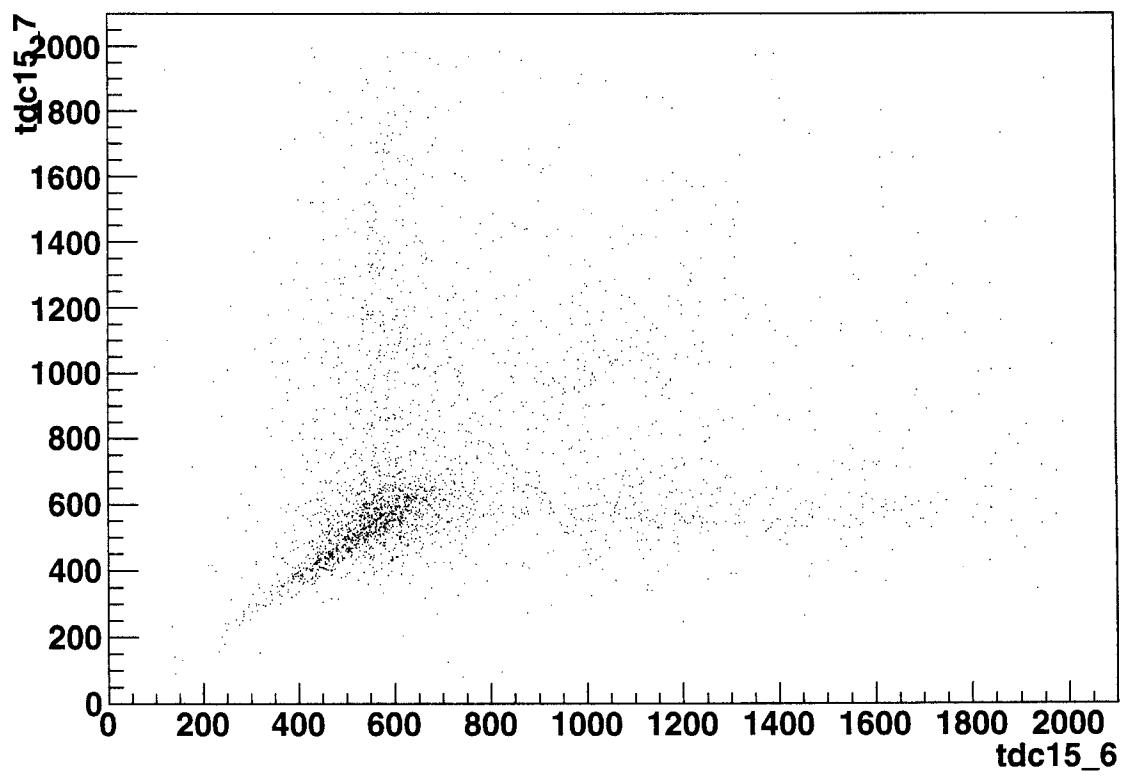
4993 ENTRIES



DIFFERENT PMTS

tdc15_7:tdc15_6 {tdc15_7<2000&&tdc15_6<2000}

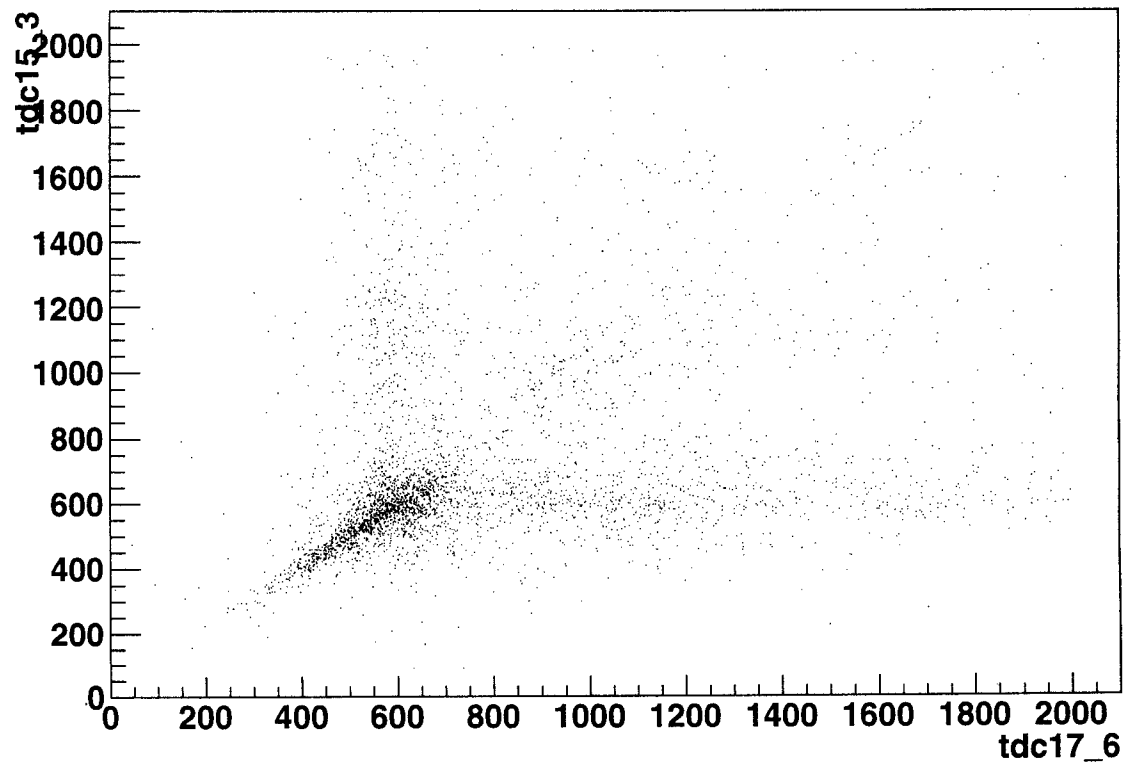
2831 ENTRIES



DIFFERENT PMTS

tdc15_3:tdc17_6 {tdc15_3<2000&&tdc17_6<2000}

3674 ENTRIES



9/12/10

Nagoya cosmic ray run 80, ev. 3

