

STURM2 Meeting Materials

2011.3.23

J.W. Flanagan

Nichibei funding

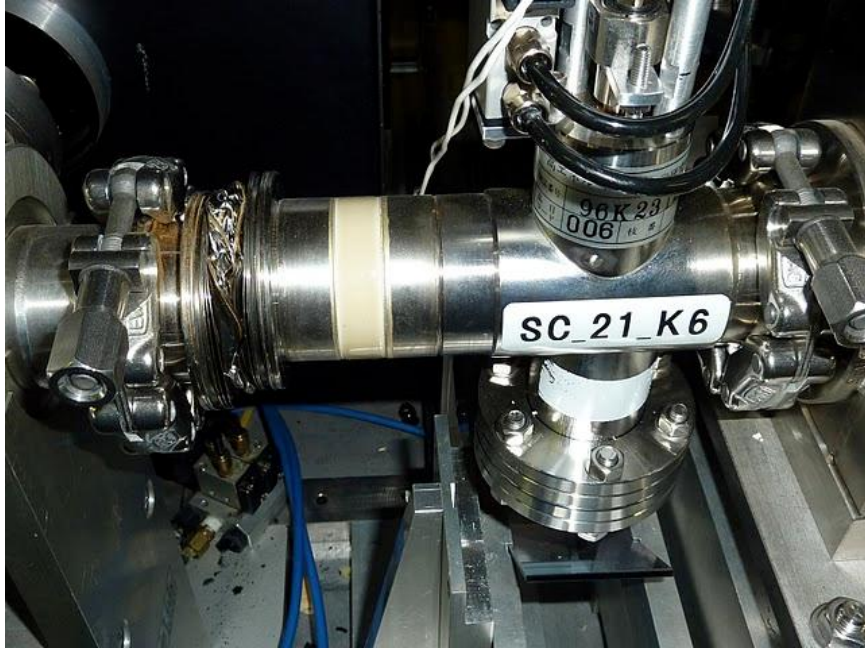
- Accelerator side had requested 1 oku-yen, including x-ray and beamstrahlung monitor topics.
 - Preliminary indications (before earthquake) were that we would get half that, 5,000 man-yen.
 - Exactly what amounts allocated to which topics still to be worked out.
 - No updates since earthquake.

Effects of Earthquake

- Earthquake struck 11 March 2011
- Lab closed for first week, slowly restoring power to other buildings the second week.
- Full extent of damage not yet known.
- KEKB tunnel tour (2011.3.22):
 - Evidence of motion at expansion joints in tunnel
 - Some sections of tunnel have changed position relative to other sections by several millimeters.
 - Survey work needed to re-establish tracking network monuments.
 - Belle detached from anchor plate, but is still on rails.
 - Some new rainwater leaks found in tunnel.
 - No immediately visible damage to accelerator components that are still in KEKB tunnel.
 - Linac not so lucky – many damaged bellows sections, plus other damage seen. Re-mounting and re-alignment work also needed (on bright side, that had been planned anyway).
- KEK must conserve power as much as possible, due to national shortage.
 - For the time being, cannot turn on lights, heaters in offices, or any other non-essential equipment.



Linac



Belle



KEKB tunnel floor (expansion joints)

KEKBトンネル マグネット関係簡易調査速報

3/23/2011 大澤、川本、増澤



破壊されたExp.Joint上の塗装面の例。
筐体(トンネル)の変形については不明(要測量)。
アライメントし直しは避けられないのでは？
モニュメントも動いてしまった可能性あり。

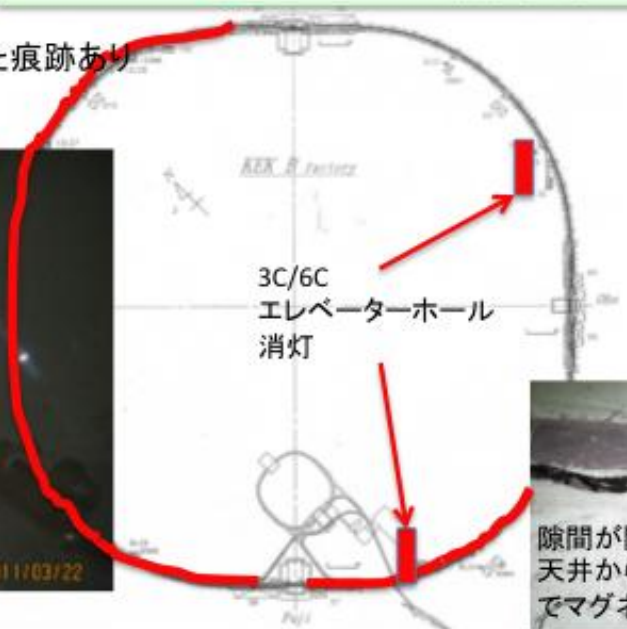
NL287 Exp.Joint

液状化して泥水が隙間から吹き出した痕跡あり



FR349 Exp.Joint

液状化して泥水が隙間から吹き出した痕跡あり



OL028、OR112 Exp.Joint
隙間。大穂側が上がっている。

隙間が開いたExp.Jointの上の
天井からは雨漏りしている箇所あり。ブルーシート
でマグネットを覆った。

— 3/22現在 照明消灯中(或はバッテリー弱く点灯)中の場所

3-go-kan



D5 sub-control room



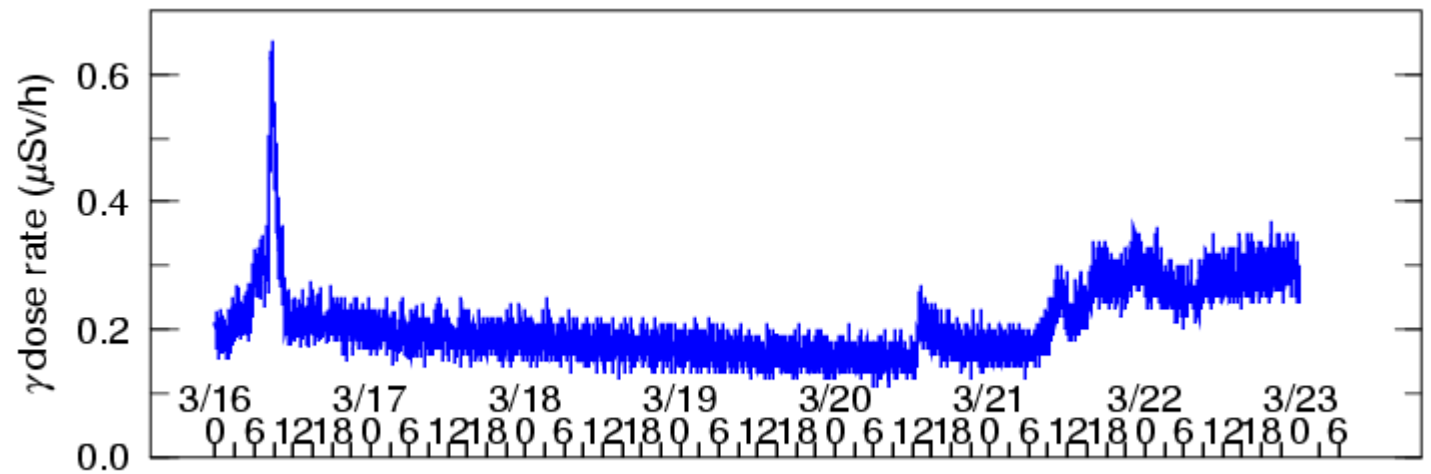
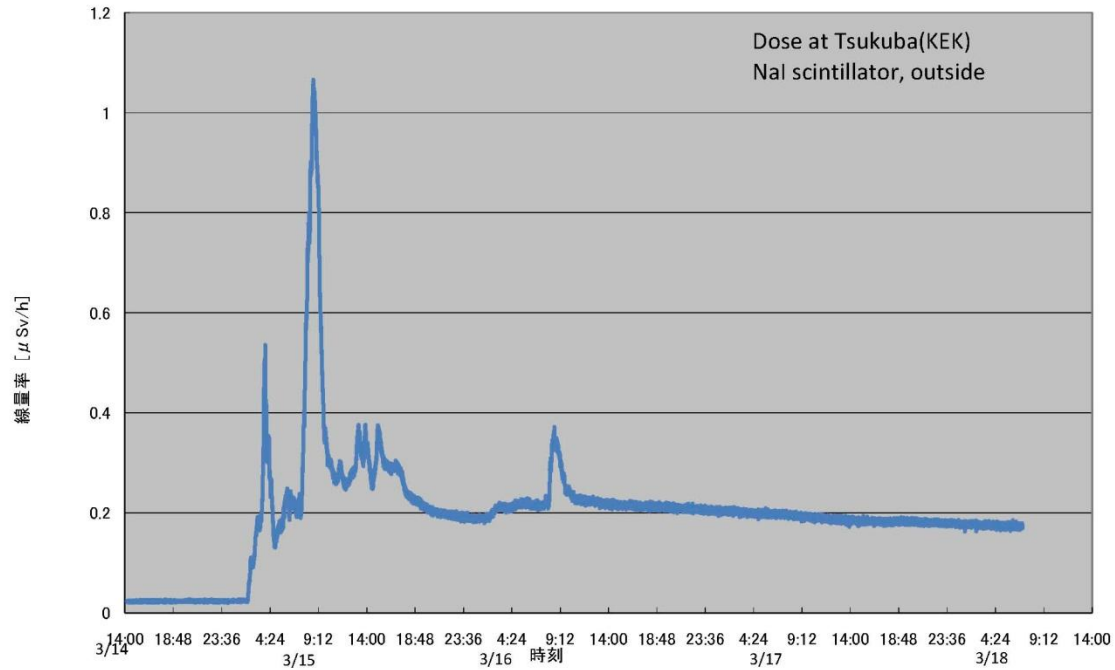
Ground subsidence



ATF



Radiation monitors



Wind direction

Fukushima Daiichi
Power Plant

2011年3月23日
8時0分

