

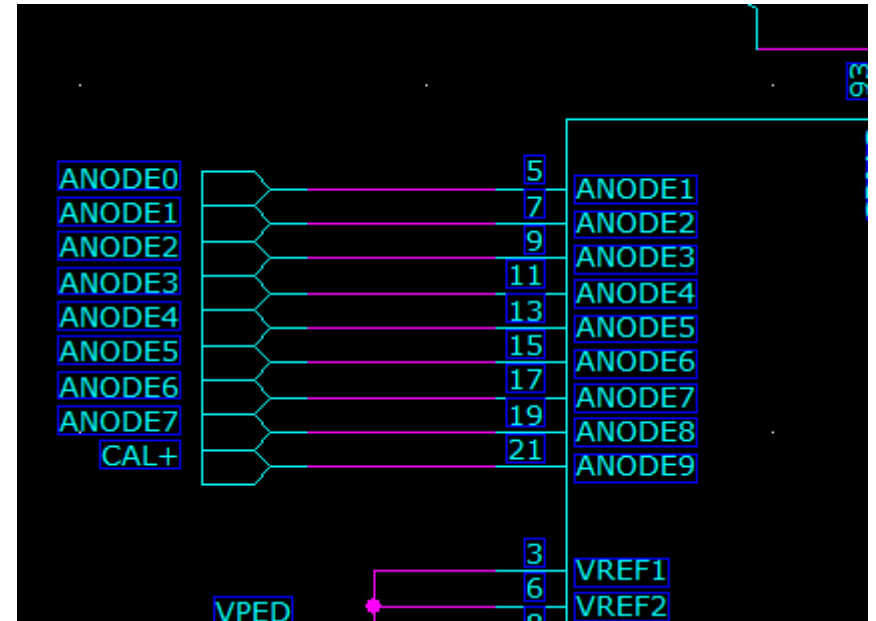
DC_STURM2_RevA Design Overview

- First, dimension issue
 - 8 RF channels
 - Width of Amp board 317mils
 - 4 boards

(4 on top, 4 on bottom)

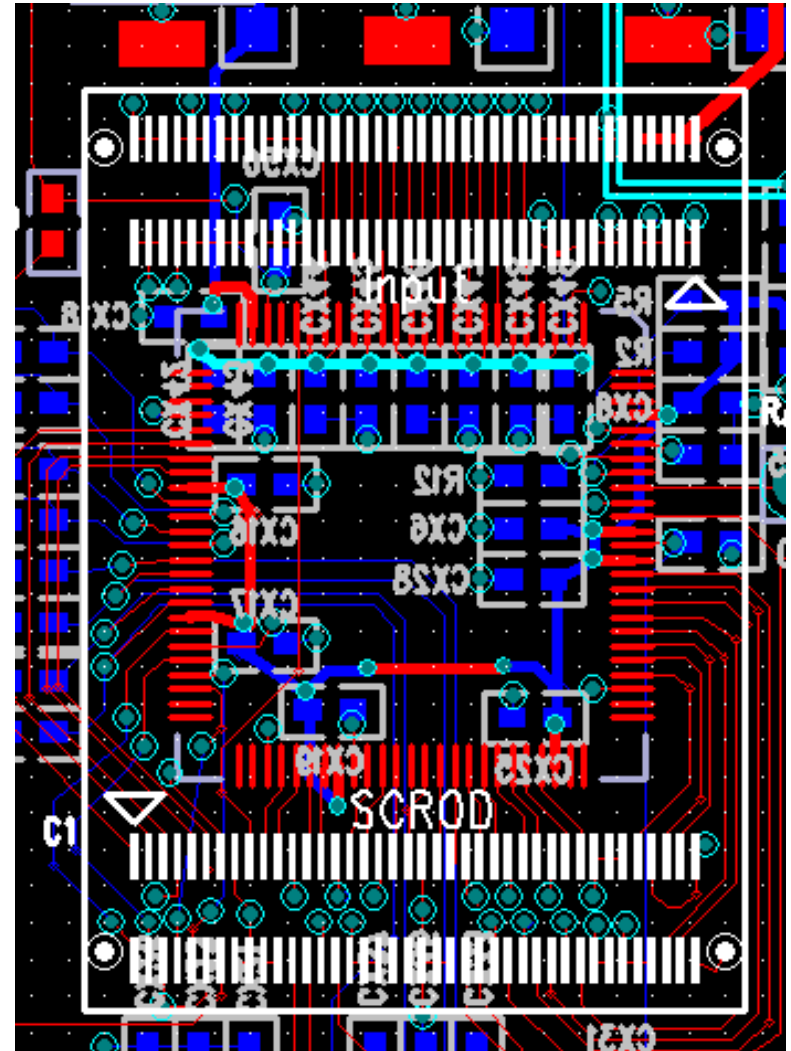
required space : about 1400mils

- STURM2 card's width: 1370mils



DC_STURM2_RevA Design Overview

- 40 pin connectors
(high lighted in pic)
- Top one for the RF inputs
- Bottom one for the data transaction to FPGA board



DC_STURM2_RevA Design Overview

- Regulators
 - MCP1826T-adjustable
 - Provide power to Relay
 - MCP1826S- fixed
 - Provide A2.5V to ASIC
- IC DAC
 - AD5324
 - Quad Vout for Vdly on ASIC

