

institution:	University of Hawai'i at Manoa High Energy Physics Group Instrumentation Development Lab
title:	DC_STURM2_COMMON
revision:	A
IDLAB design #:	IDL_13_041
circuit design:	JM
PCB design:	JM
sheet #:	1 of 4
sheet description:	TOP Block
date last modified:	5-October-2013

6

5

4

3

2

1

E

E

D

D

C

C

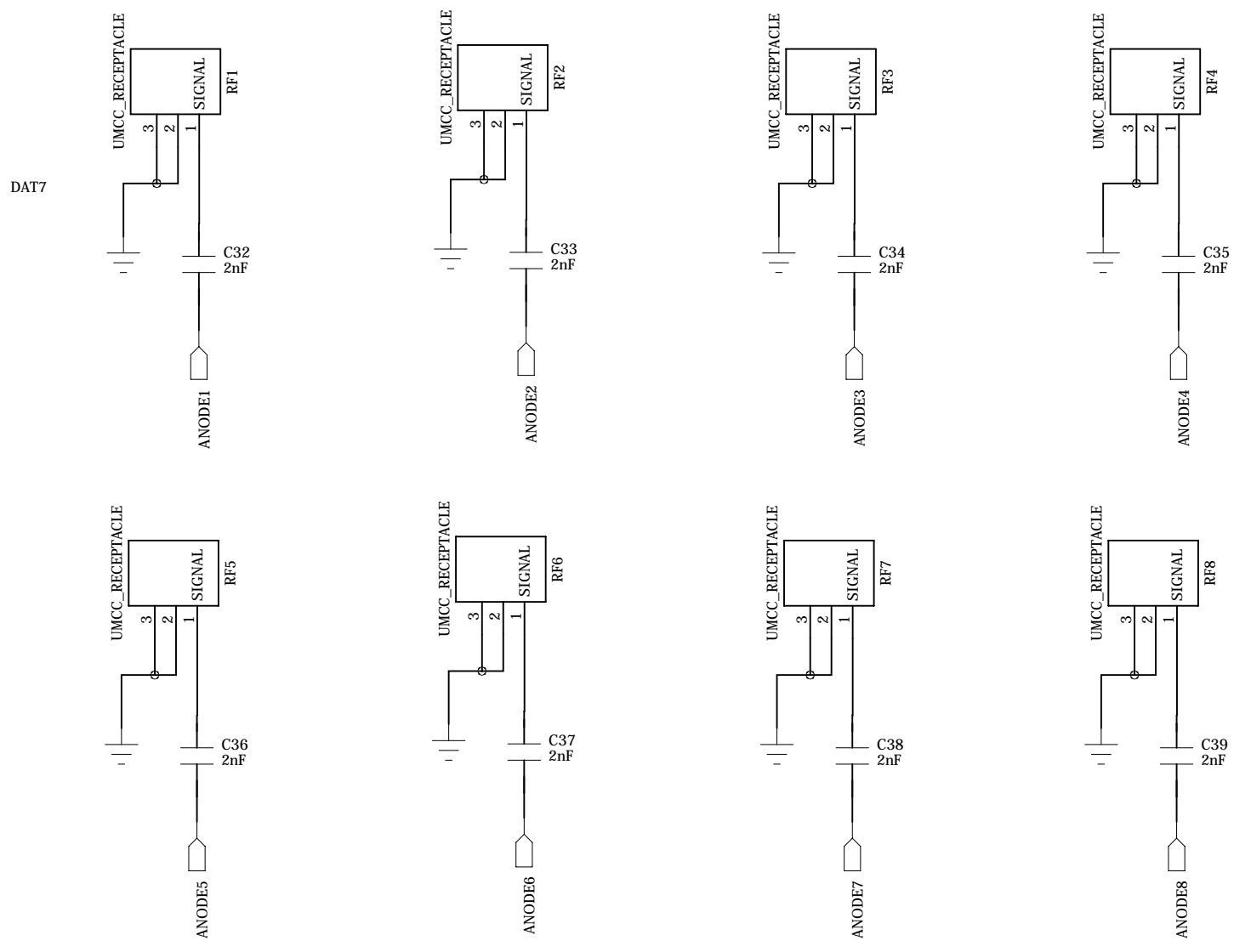
B

B

A

A

Input capacitors 1.6 -2 pF



institution:	University of Hawai'i at Manoa High Energy Physics Group Instrumentation Development Lab
title:	DC_STURM2_COMMON
revision:	A
IDLAB design #:	IDL_13_041
circuit design:	JM
PCB design:	JM
sheet #:	2 of 4
sheet description:	Signal input
date last modified:	5-October-2013

6

5

4

3

2

1

E

E

D

D

C

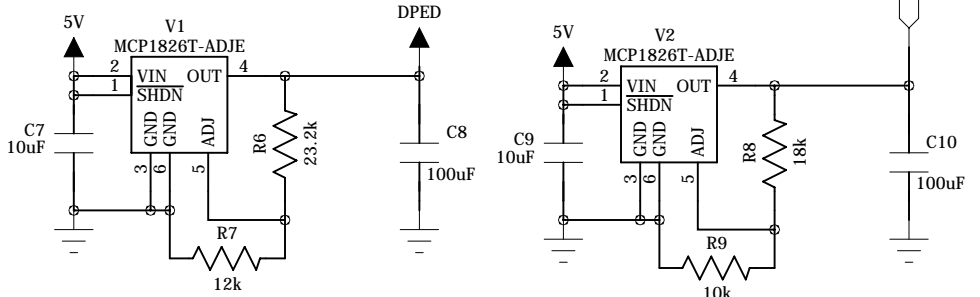
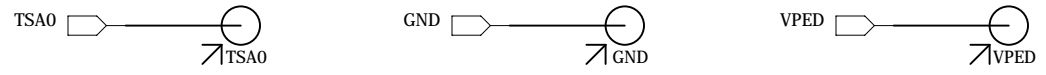
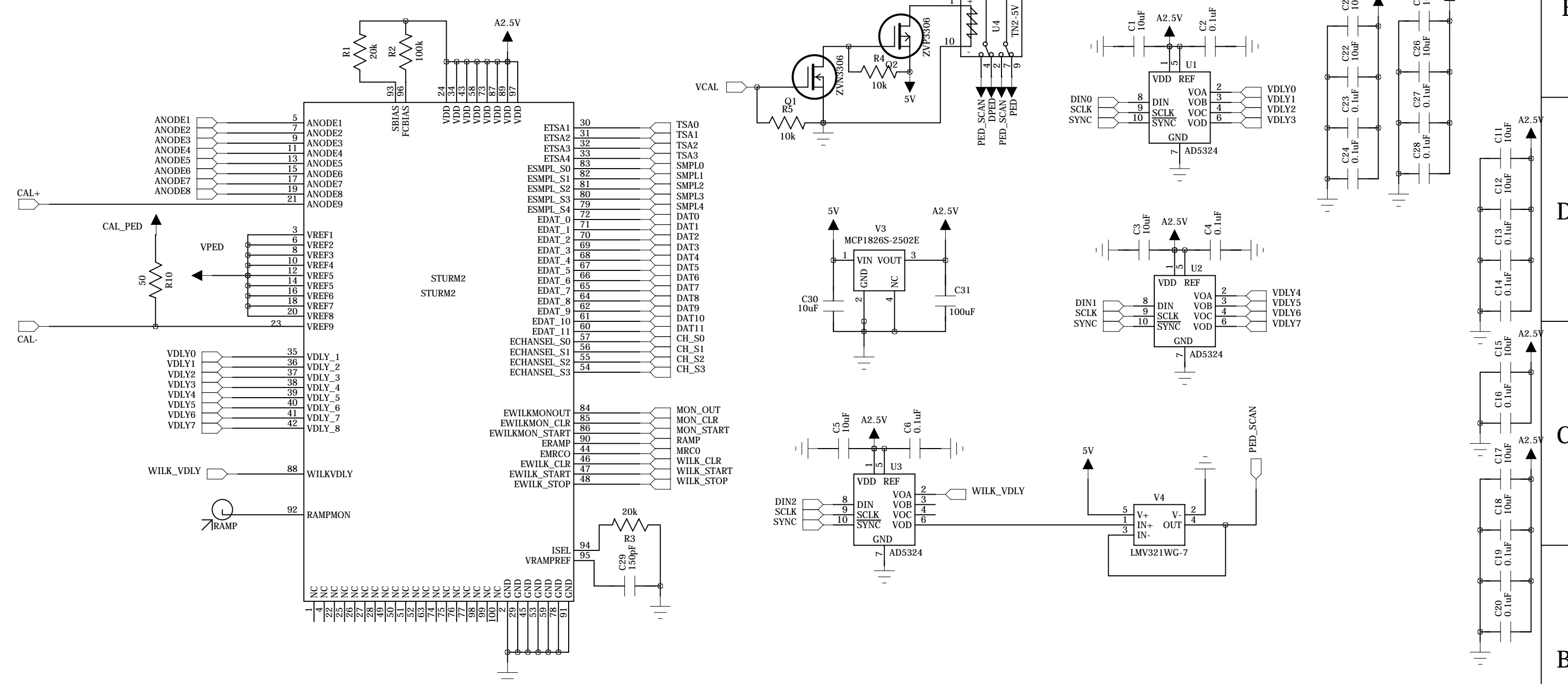
C

B

B

A

A



VPED set to 1.24 Volts

$$VPED = 0.41 * (R9 + R10) / R10$$

 Keep R10 between 10k - 200k

institution:	University of Hawai'i at Manoa High Energy Physics Group Instrumentation Development Lab
title:	DC_STURM2_COMMON
revision:	A
IDLAB design #:	IDL_13_041
circuit design:	JM
PCB design:	JM
sheet #:	3 of 4
sheet description:	STURM2
date last modified:	5-October-2013

6

5

4

3

2

1

E

E

D

D

C

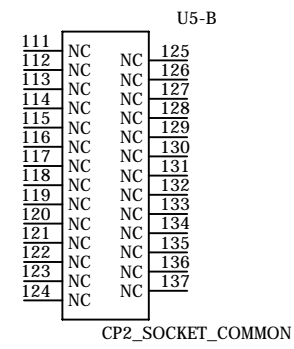
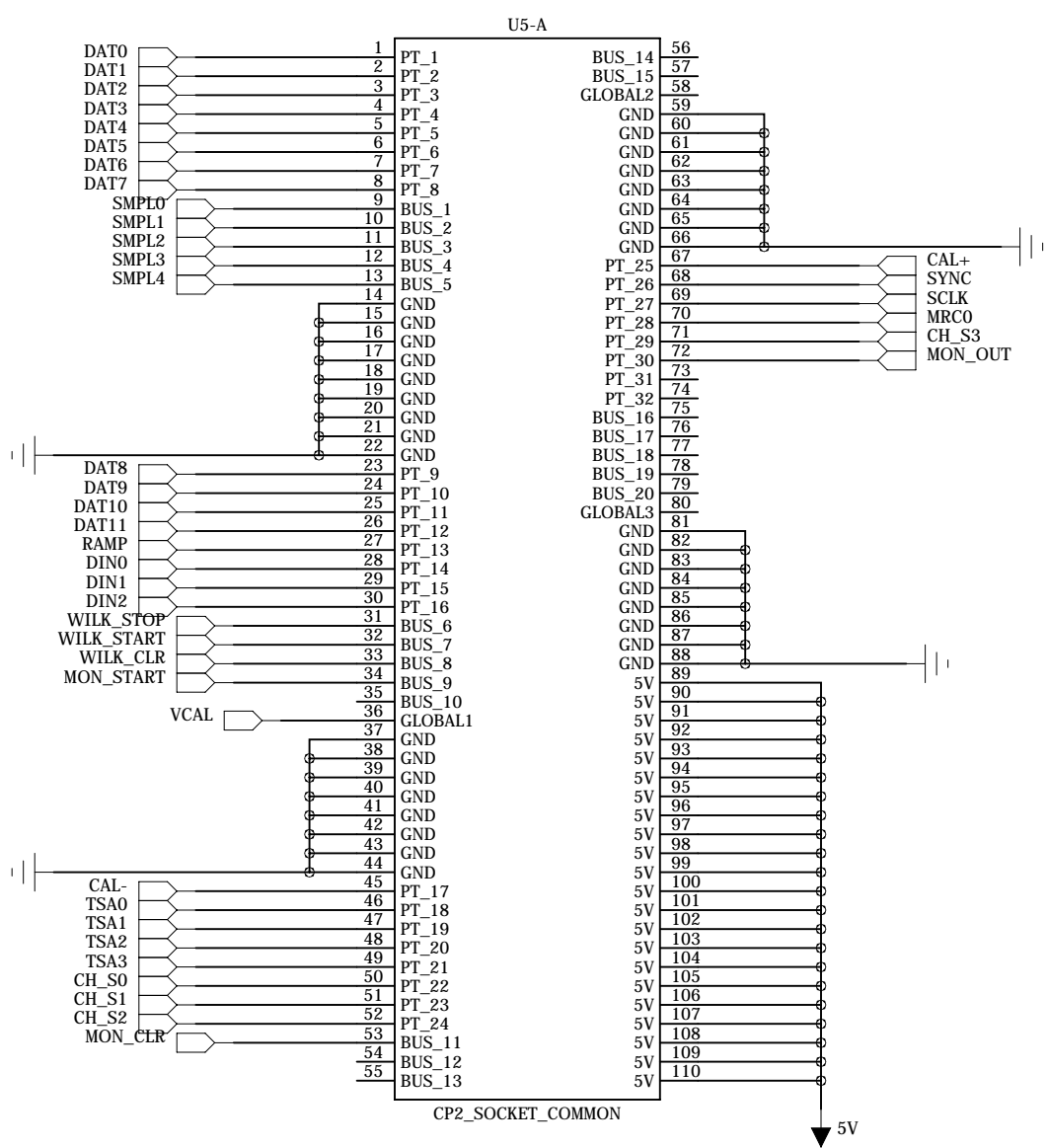
C

B

B

A

A



institution:	University of Hawai'i at Manoa High Energy Physics Group Instrumentation Development Lab
title:	DC_STURM2_COMMON
revision:	A
IDLAB design #:	IDL_13_041
circuit design:	JM
PCB design:	JM
sheet #:	4 of 4
sheet description:	SCROD connection
date last modified:	5-October-2013