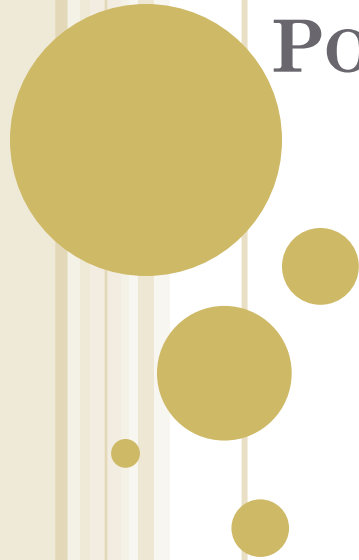


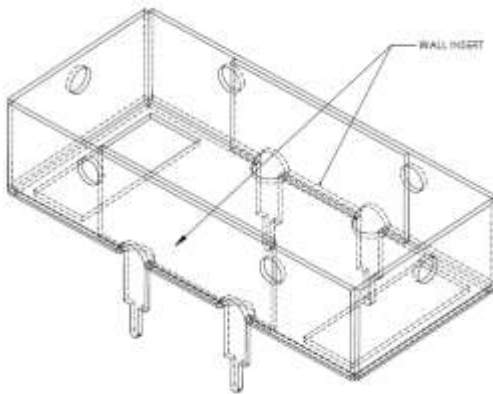
**UNIVERSITY OF HAWAII,
INSTRUMENTATION DEVELOPMENT
LABORATORY**

**STURM2 20DB RF
POWER BOARD REVISION A**

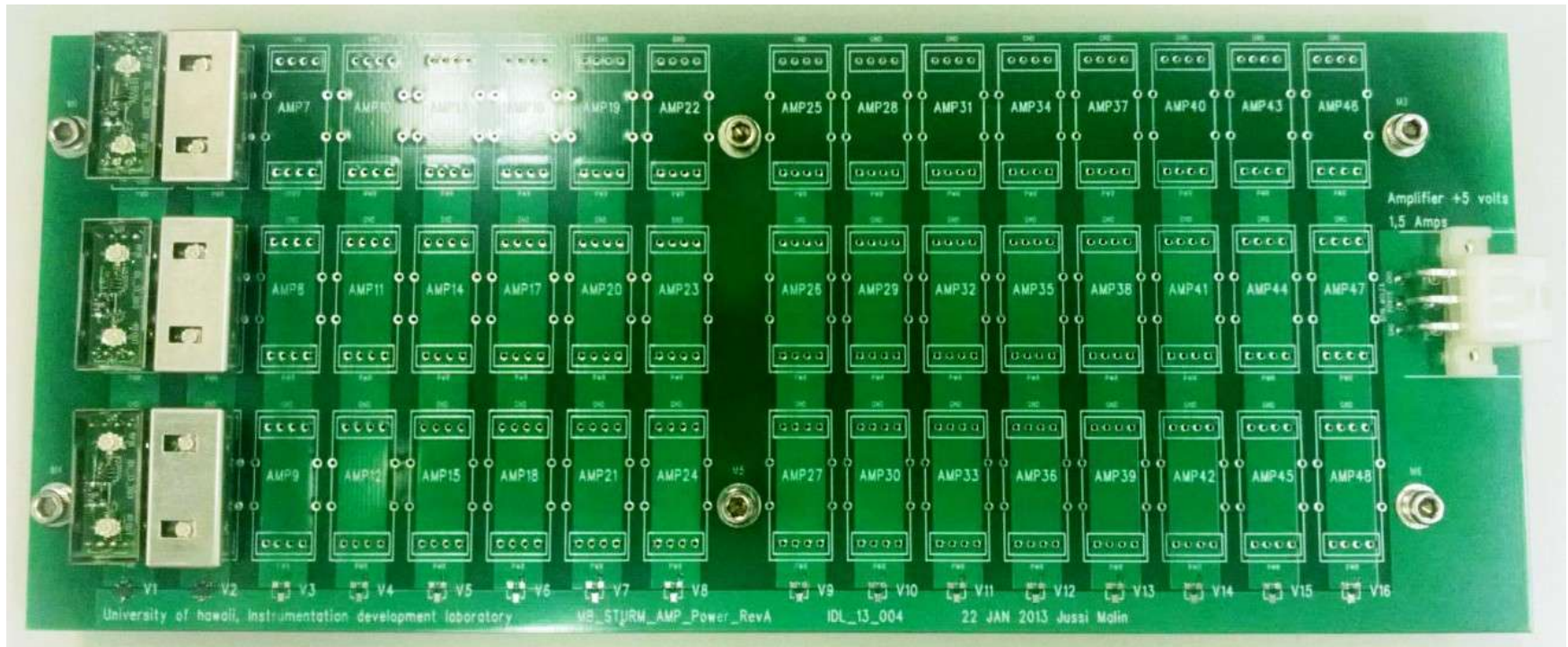


AMPLIFIER POWER BOARD

- Power board supplies power for the amplifiers
- Each board houses amplifiers for 16 channels, 48 amplifiers in total
- Power consumption ≈ 8 Watts
- Board holds the bottom part of the RF shield



POWER BOARD TOP



POWER BOARD TOP WITH AMPLIFIERS IN PLACE



POWER BOARD TOP WITH AMPLIFIERS AND SHIELDS IN PLACE



POWER BOARD TOP WITH AMPLIFIERS AND SHIELDS IN PLACE

