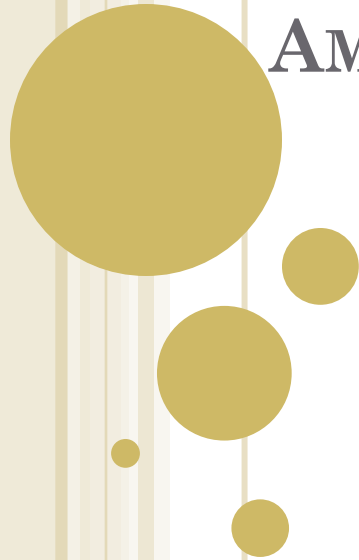


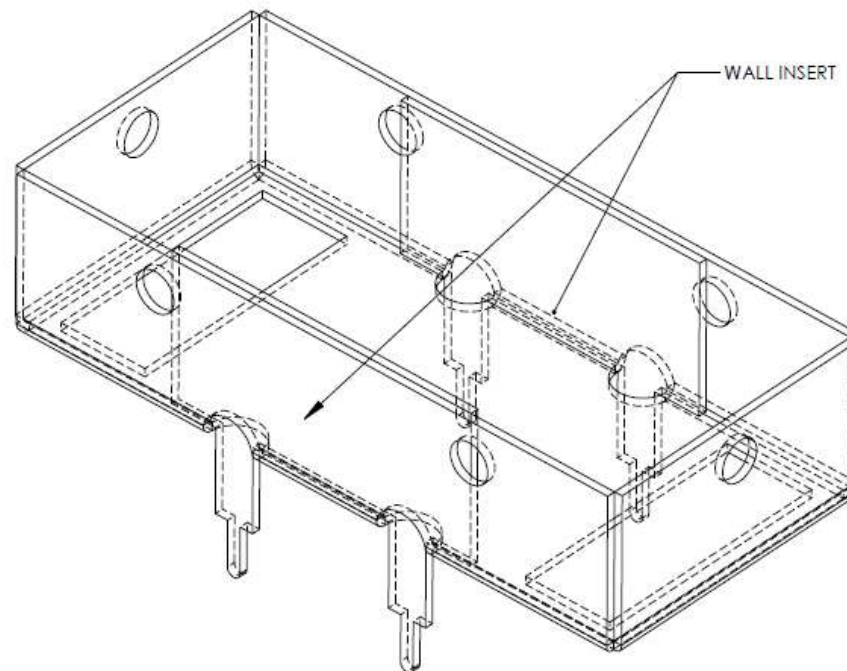
**UNIVERSITY OF HAWAII,
INSTRUMENTATION DEVELOPMENT
LABORATORY**

**STURM2 20DB RF
AMPLIFIER REVISION D**

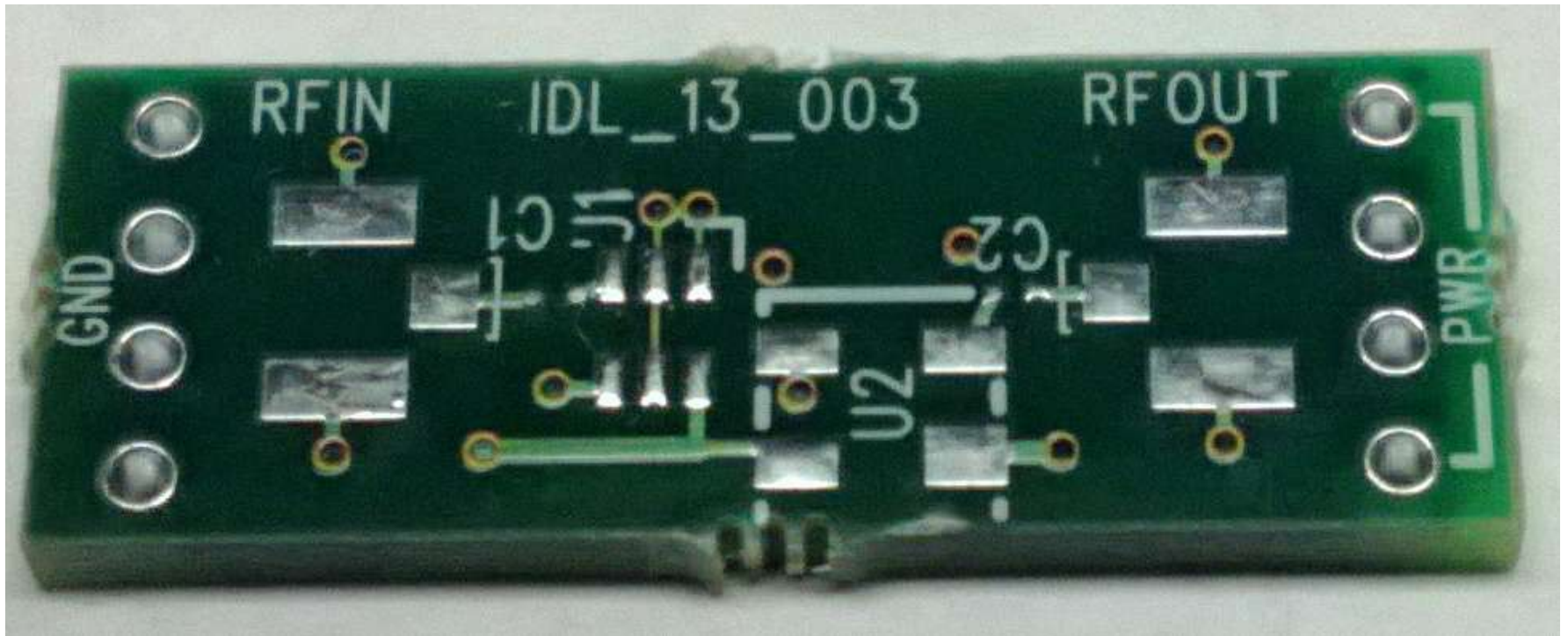


CHANGES IN REVISION D

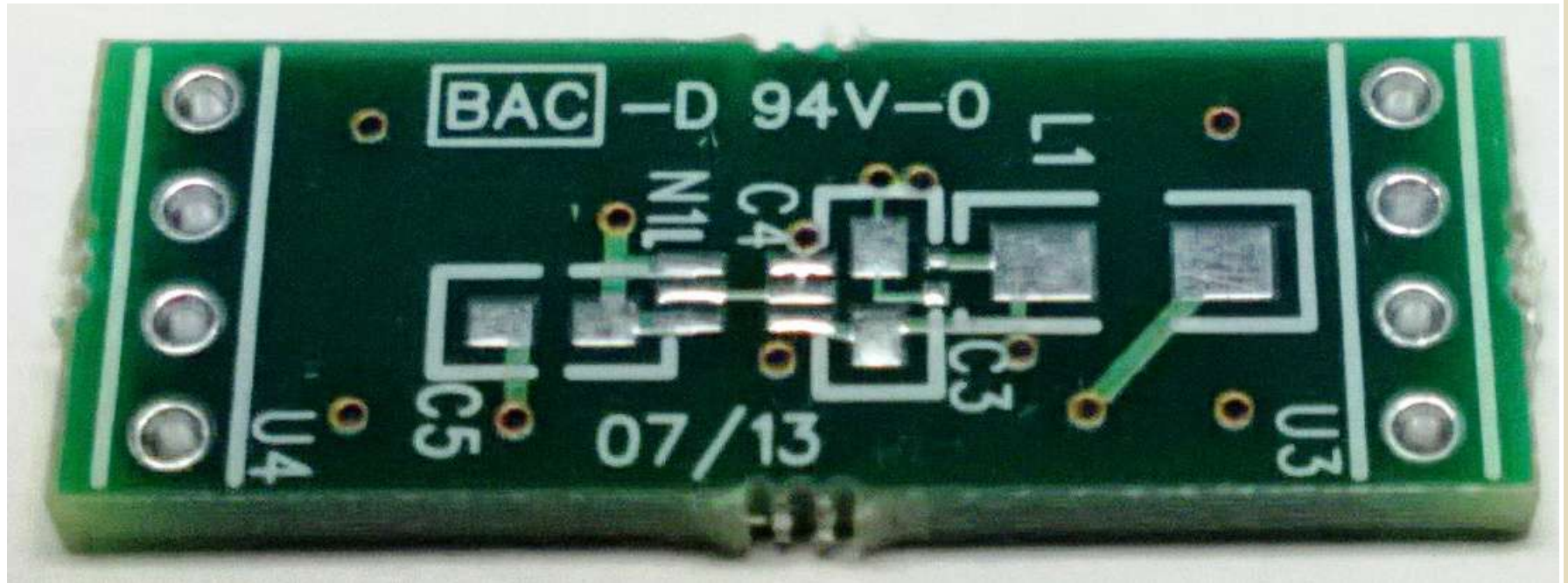
- Single power connector replaced with two four pin array connectors for better stability and to make assembly easier and faster
- RF signal connectors changed to slightly larger UMCC receptacles
- Previous design had lot of interference in RF signals.
New design will be enclosed inside a metal RF shield



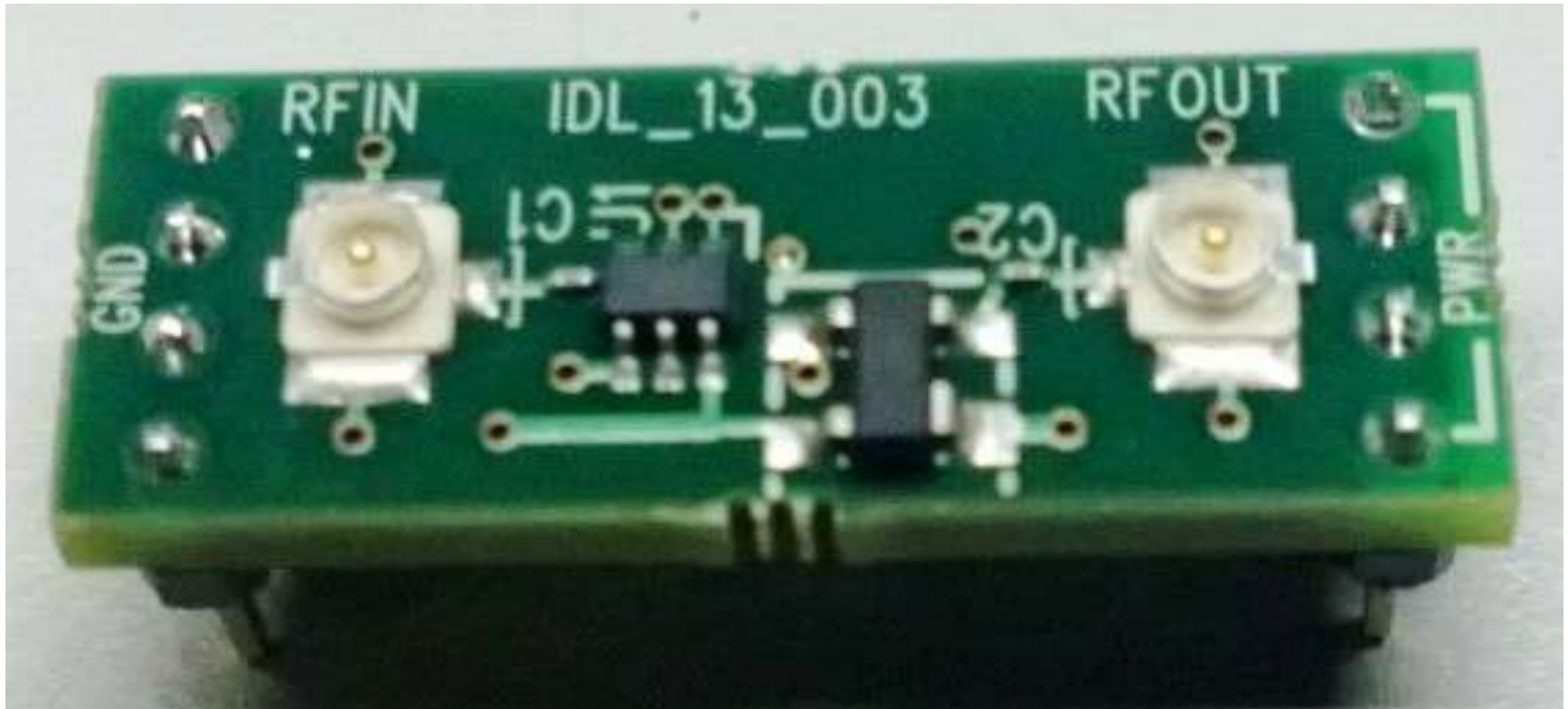
AMPLIFIER BOARD TOP



AMPLIFIER BOARD BOTTOM



ASSEMBLED BOARD TOP



ASSEMBLED BOARD BOTTOM

