


Exact Pulse circuit values may need tuning

Electrical Pulse signal version

Univ. of Hawai'i -- Instr. Dev. Lab.

TITLE: BS\_KLMPA\_Eval\_RevA IDL\_12\_031

	Design:	Page Description:	REV:
	GSV XS	SIGGEN	A

DATED: 17-OCT-2012 [TOP] SHEET: 1 OF 2

6

5

4

3

2

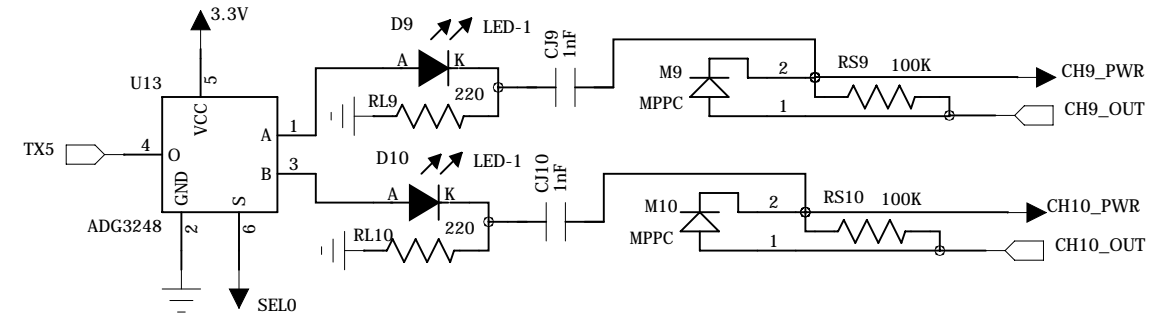
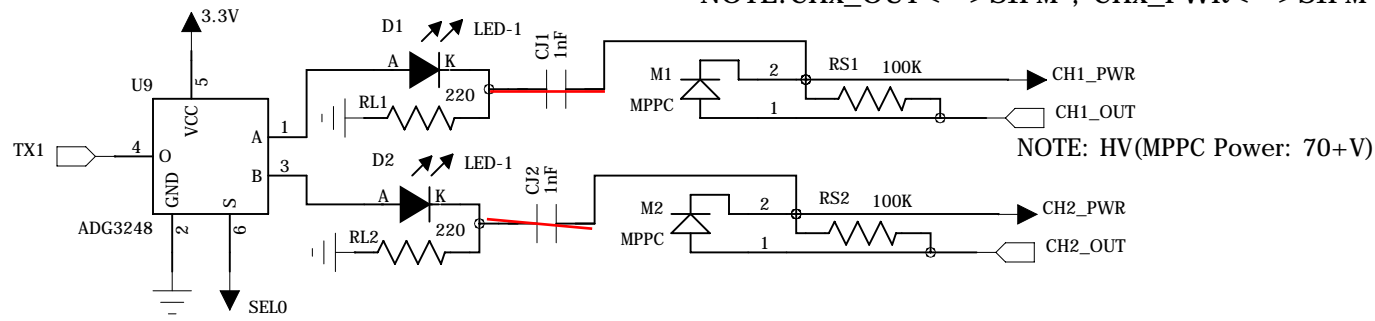
1

NOTE: CHx\_OUT<-->SIPM-; CHx\_PWR<-->SIPM+.

NOTE: HV(MPPC Power: 70+V)

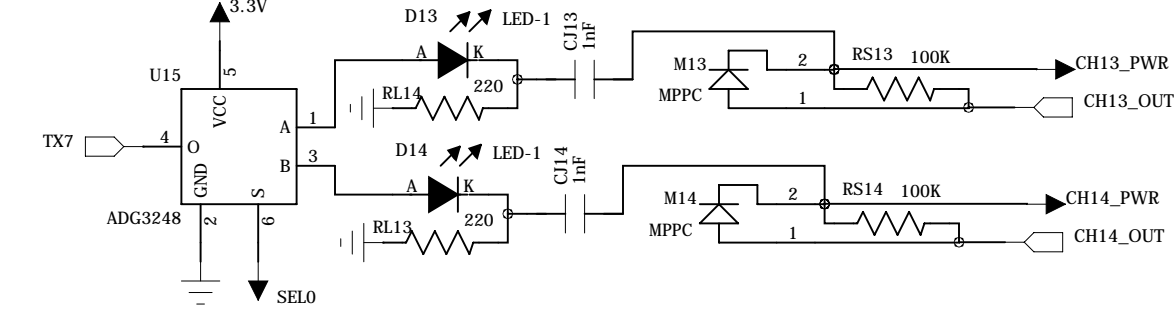
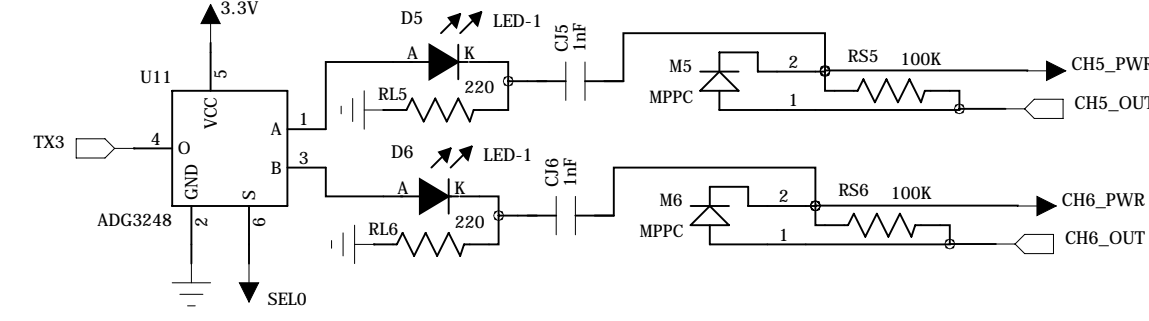
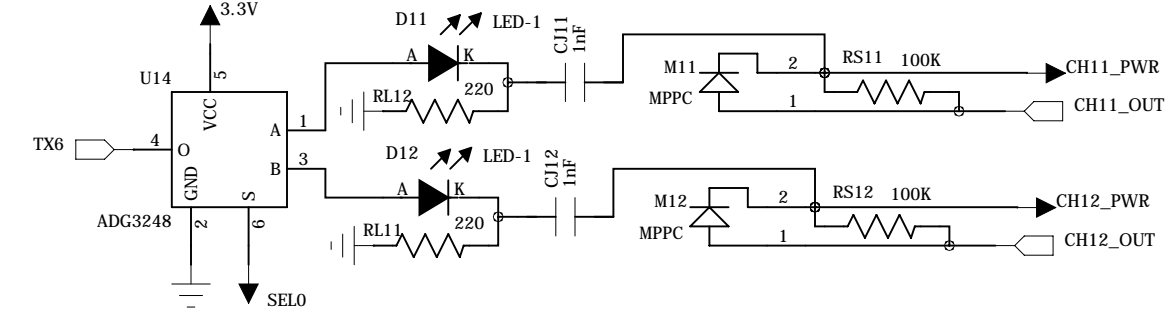
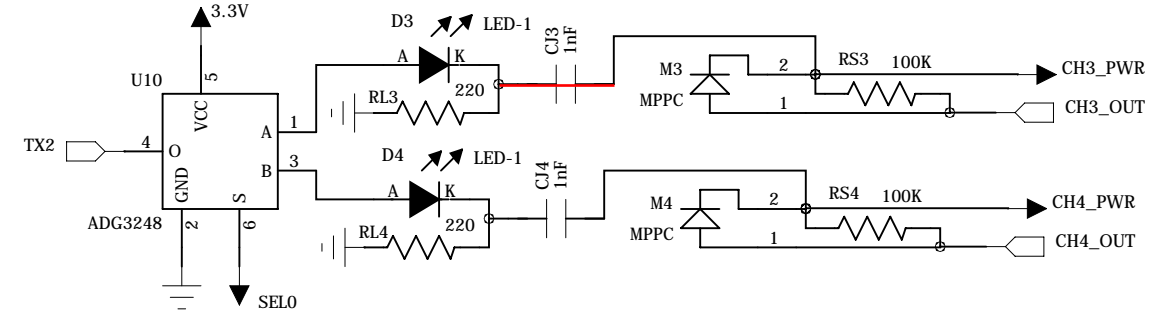
D

D



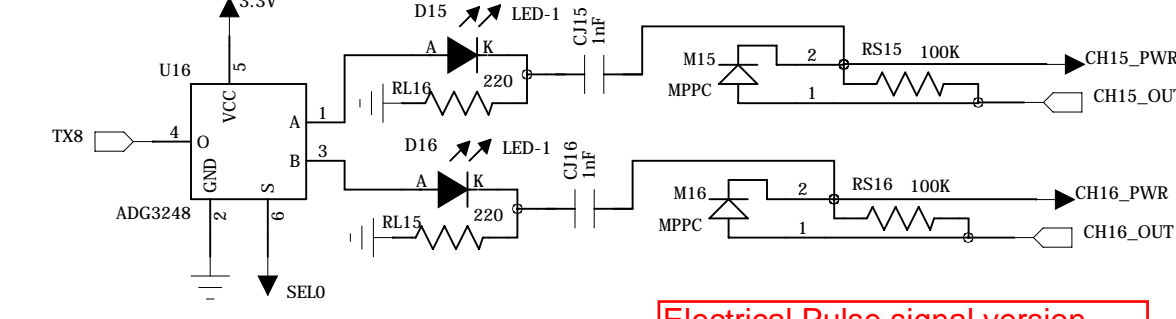
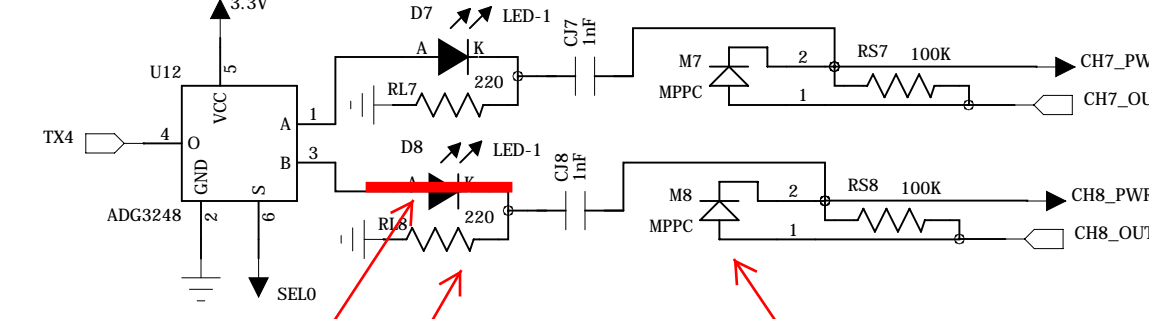
C

C



B

B



Do not install LEDs -- instead, jumper across with zero ohm resistors

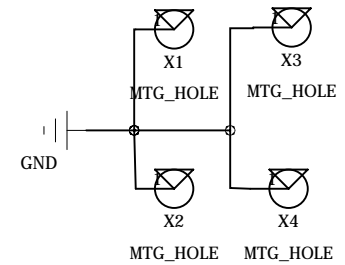
Do not install MPPCs!!!

Do not install 200 ohm resistors

Electrical Pulse signal version

A

A

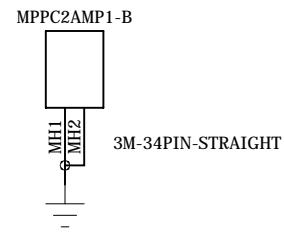
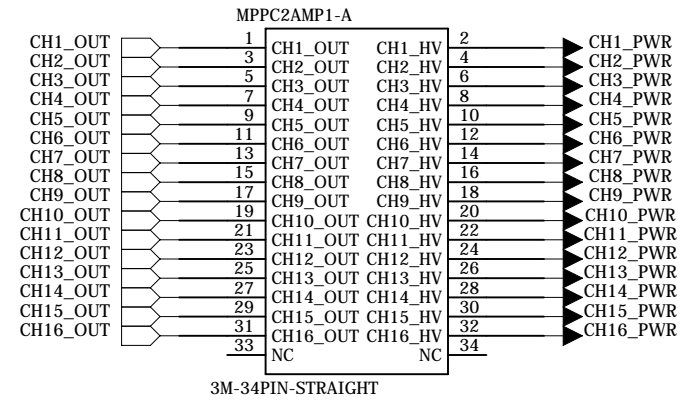


Univ. of Hawai'i -- Instr. Dev. Lab.

TITLE: BS\_KLMPA\_Eval\_RevA IDL\_12\_031

	Design:	Page Description:	REV:
	GSV XS	MPPC CONNECTOR	A

DATED: 17-OCT-2012 [MPPC\_CONN] SHEET: 2 OF 2



Electrical Pulse signal version

Univ. of Hawai'i -- Instr. Dev. Lab.

TITLE: BS\_KLMPA\_Eval\_RevA

IDL\_12\_031



Design:  
GSV  
XS

Page Description:  
MPPC PREAMP CONNECTOR

REV:  
A

DATED: 17-OCT-2012 [MPPC\_preAmp\_CONN]

SHEET: 3 OF 3

A