

6 5 4 3 2 1

D

C

B

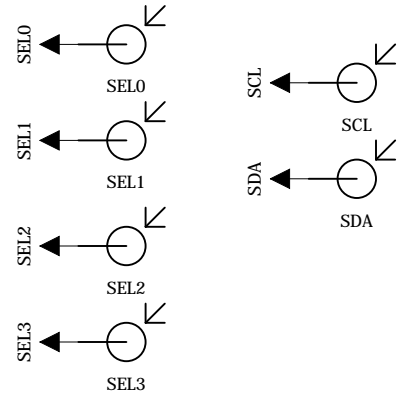
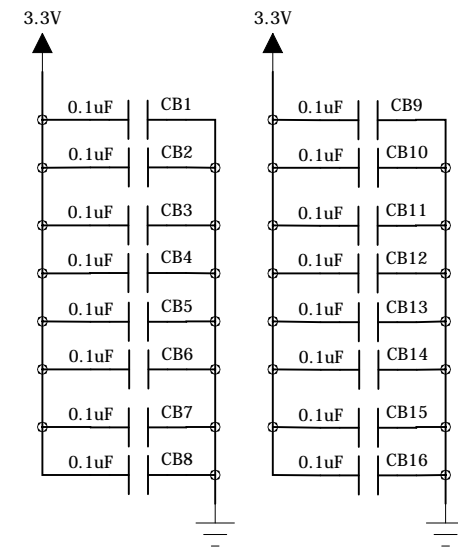
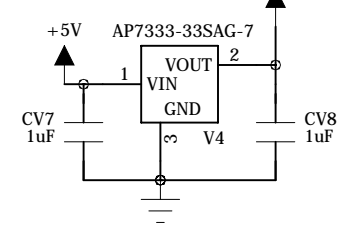
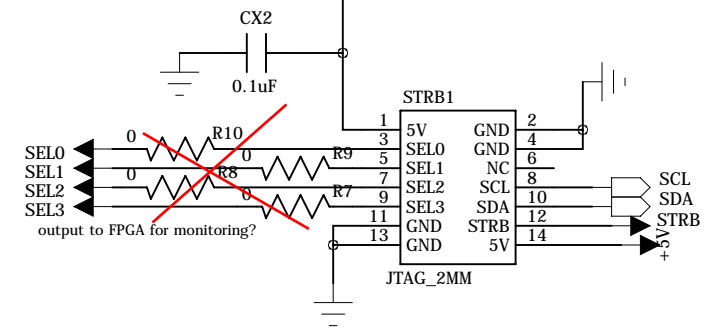
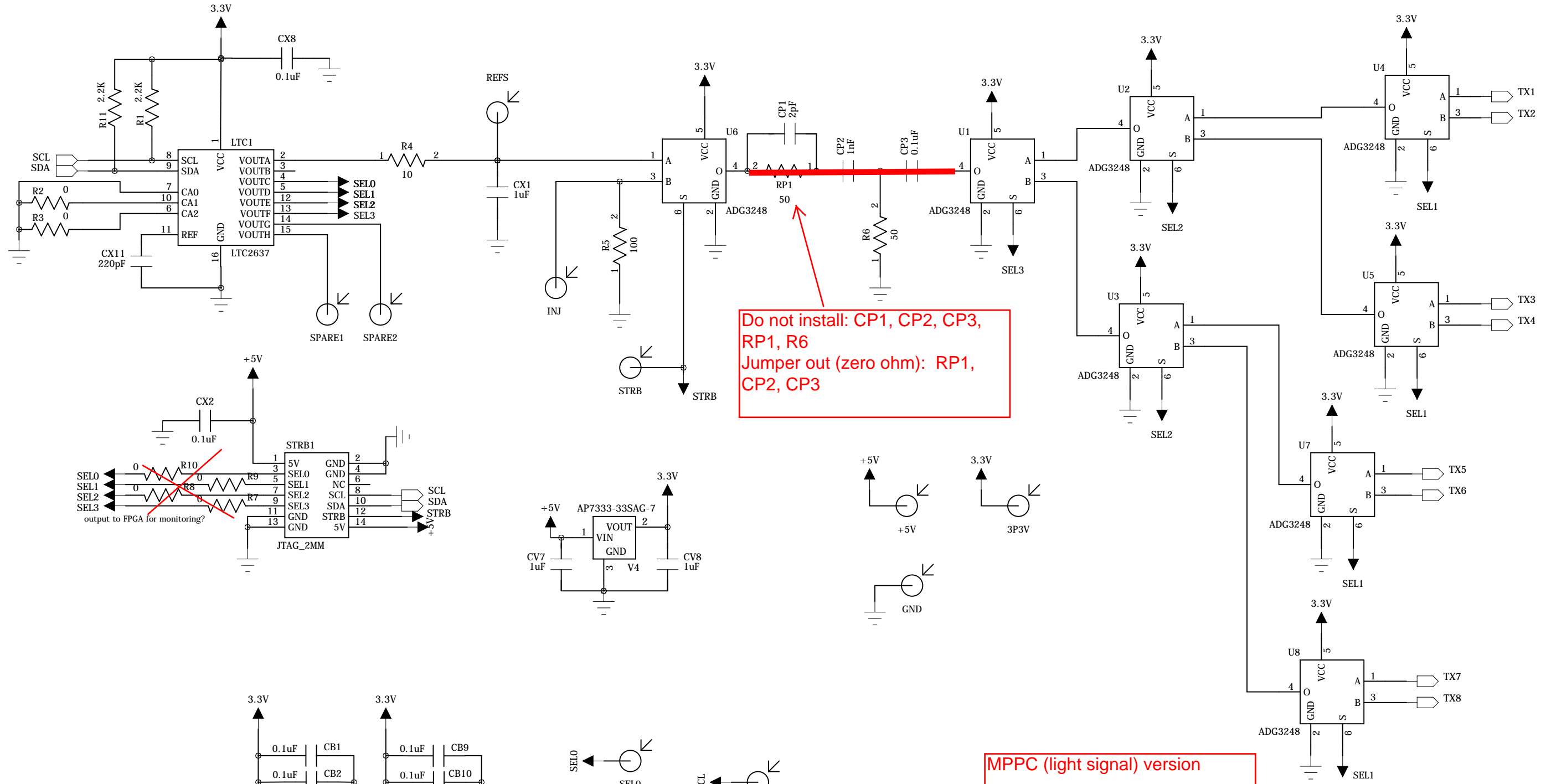
A

D

C

B

A




Do not install: CP1, CP2, CP3, RP1, R6
 Jumper out (zero ohm): RP1, CP2, CP3

MPPC (light signal) version

Univ. of Hawai'i -- Instr. Dev. Lab.

TITLE: BS_KLMPA_Eval_RevA IDL_12_031

	Design:	Page Description:	REV:
	GSV XS	SIGGEN	A

DATED: 17-OCT-2012 [TOP] SHEET: 1 OF 2

6

5

4

3

2

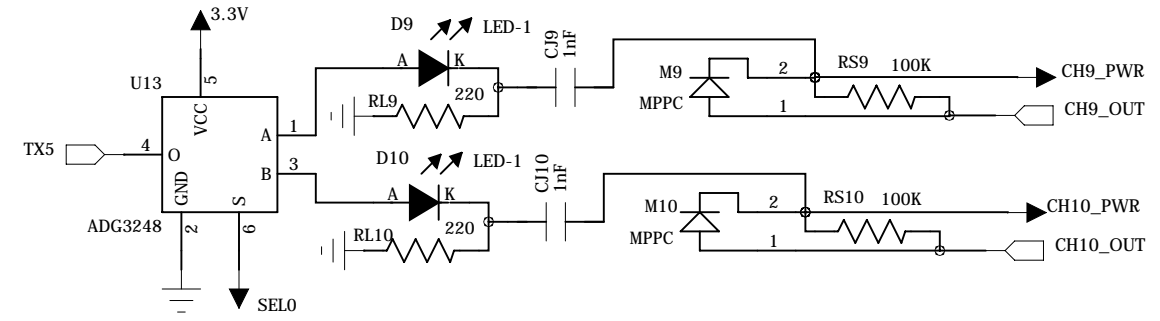
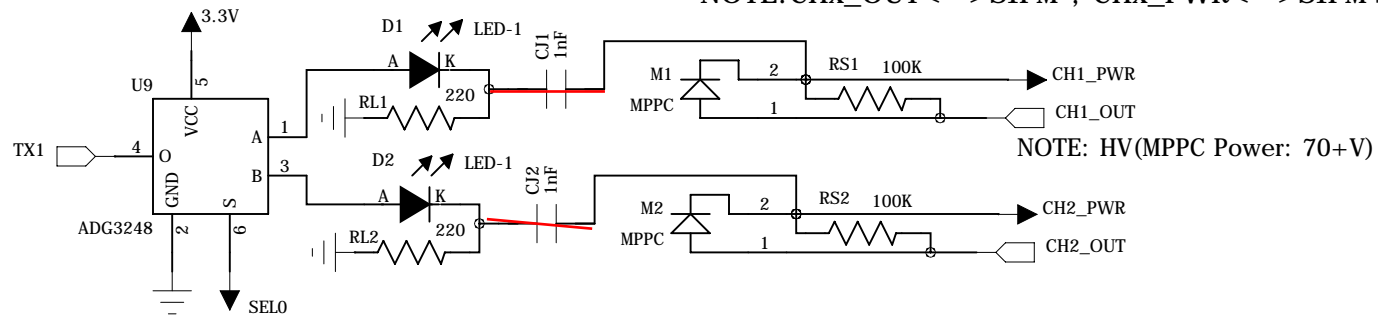
1

NOTE: CHx_OUT<-->SIPM-; CHx_PWR<-->SIPM+.

NOTE: HV(MPPC Power: 70+V)

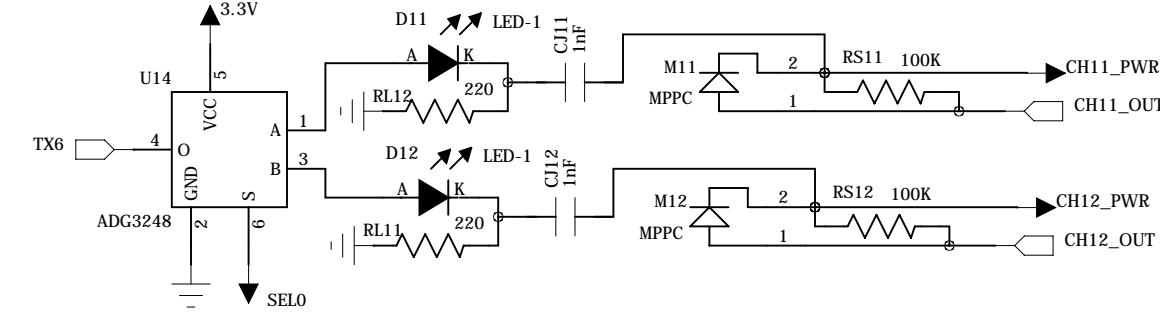
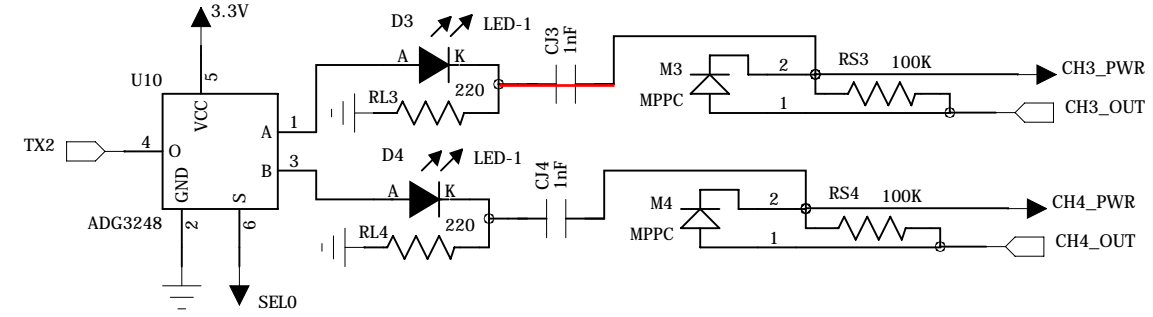
D

D



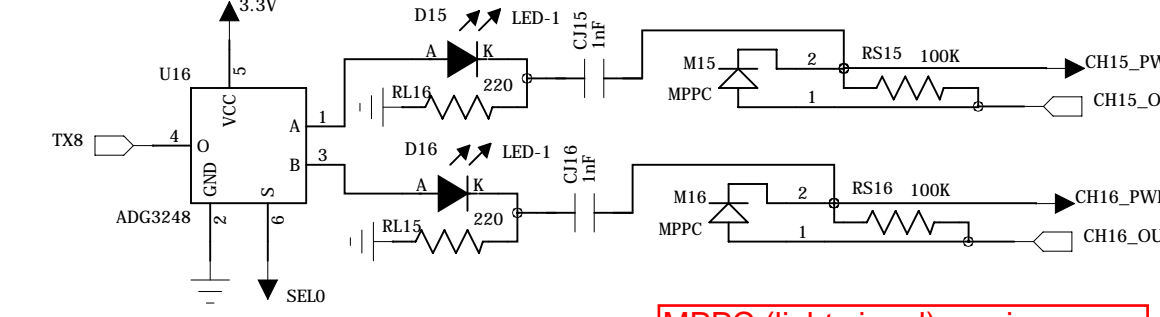
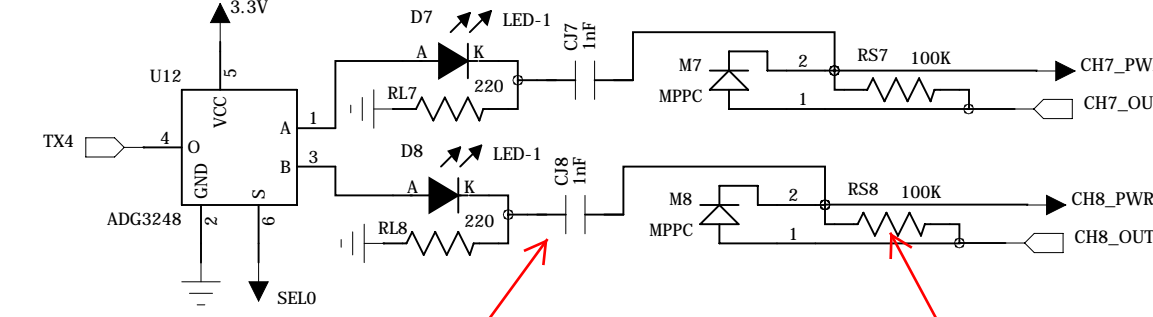
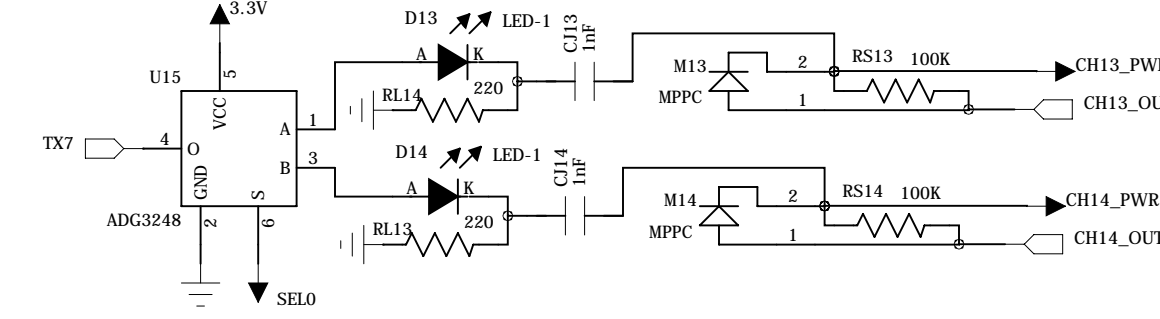
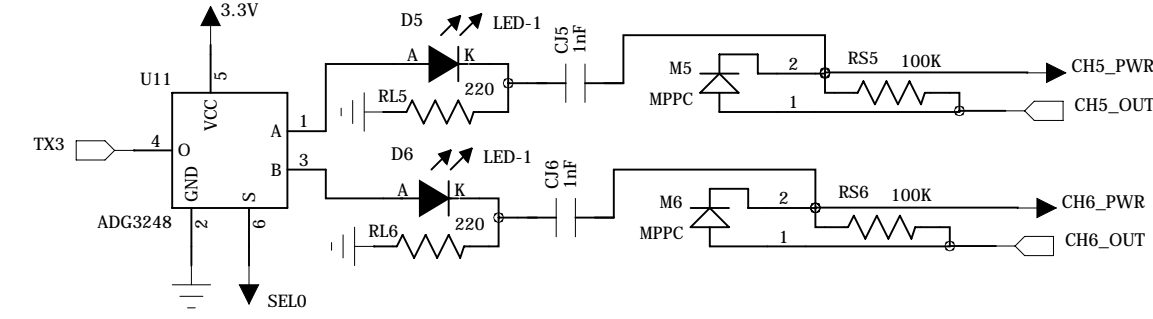
C

C



B

B



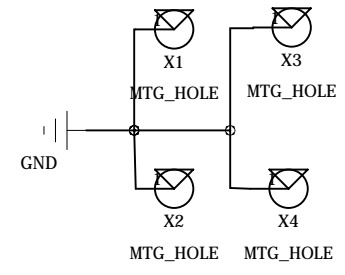
Do not install 1nF capacitors

Do not install 100k resistors

MPPC (light signal) version

A

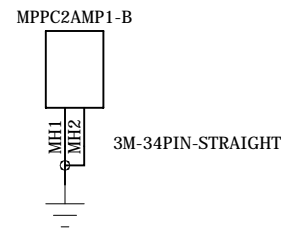
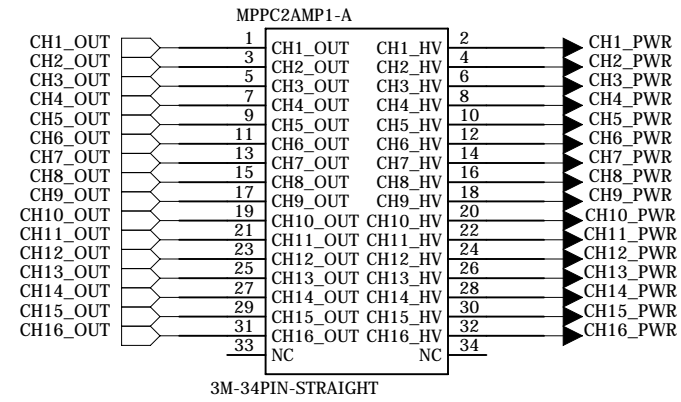
A




Univ. of Hawai'i -- Instr. Dev. Lab.

TITLE: BS_KLMPA_Eval_RevA IDL_12_031

	Design:	Page Description:	REV:
	GSV XS	MPPC CONNECTOR	A
DATED: 17-OCT-2012 [MPPC_CONN]		SHEET: 2 OF 2	



MPPC (light signal) version

Univ. of Hawai'i -- Instr. Dev. Lab.			
TITLE: BS_KLMPA_Eval_RevA		IDL_12_031	
	Design:	Page Description:	REV:
	GSV XS	MPPC PREAMP CONNECTOR	A
DATED: 17-OCT-2012		[MPPC_preAmp_CONN]	SHEET: 3 OF 3

A