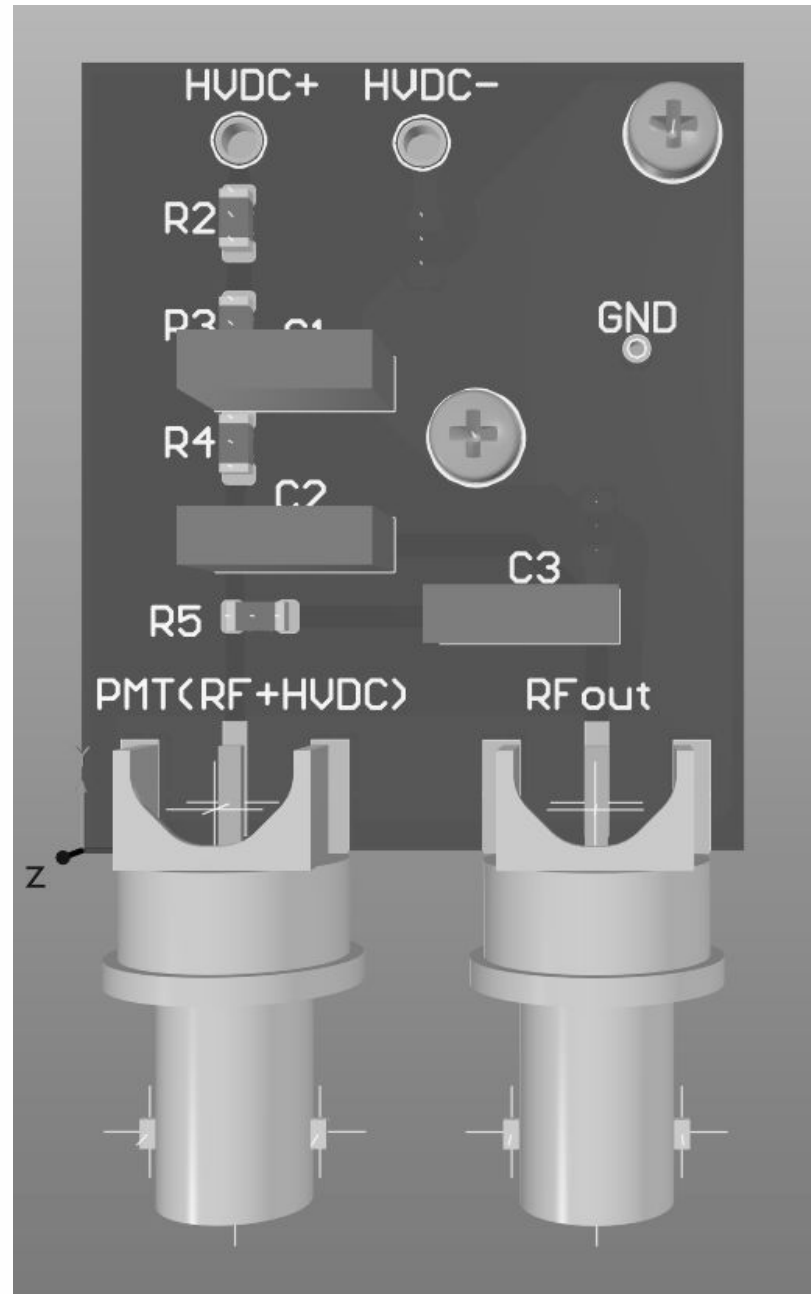


Top

Bottom



UNIVERSITY
of HAWAII®
MĀNOA

High Energy Physics Group
Instrumentation Development Laboratory
2505 Correa Road, Honolulu, HI 96822

Production Documentation for:

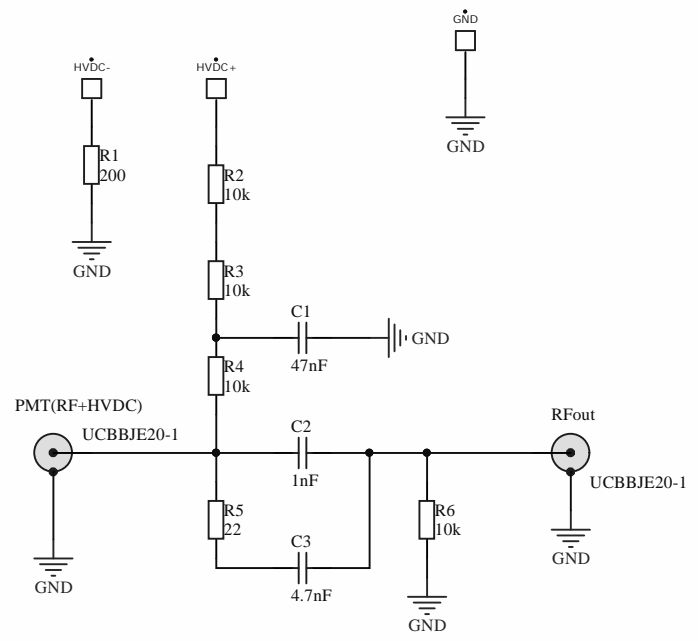
Project Name: WATCHMAN HV AC splitter
Board Name: WATCHMAN HV AC splitter
IDL num: IDL_18_045
Revision: A
Variant: [No Variations]

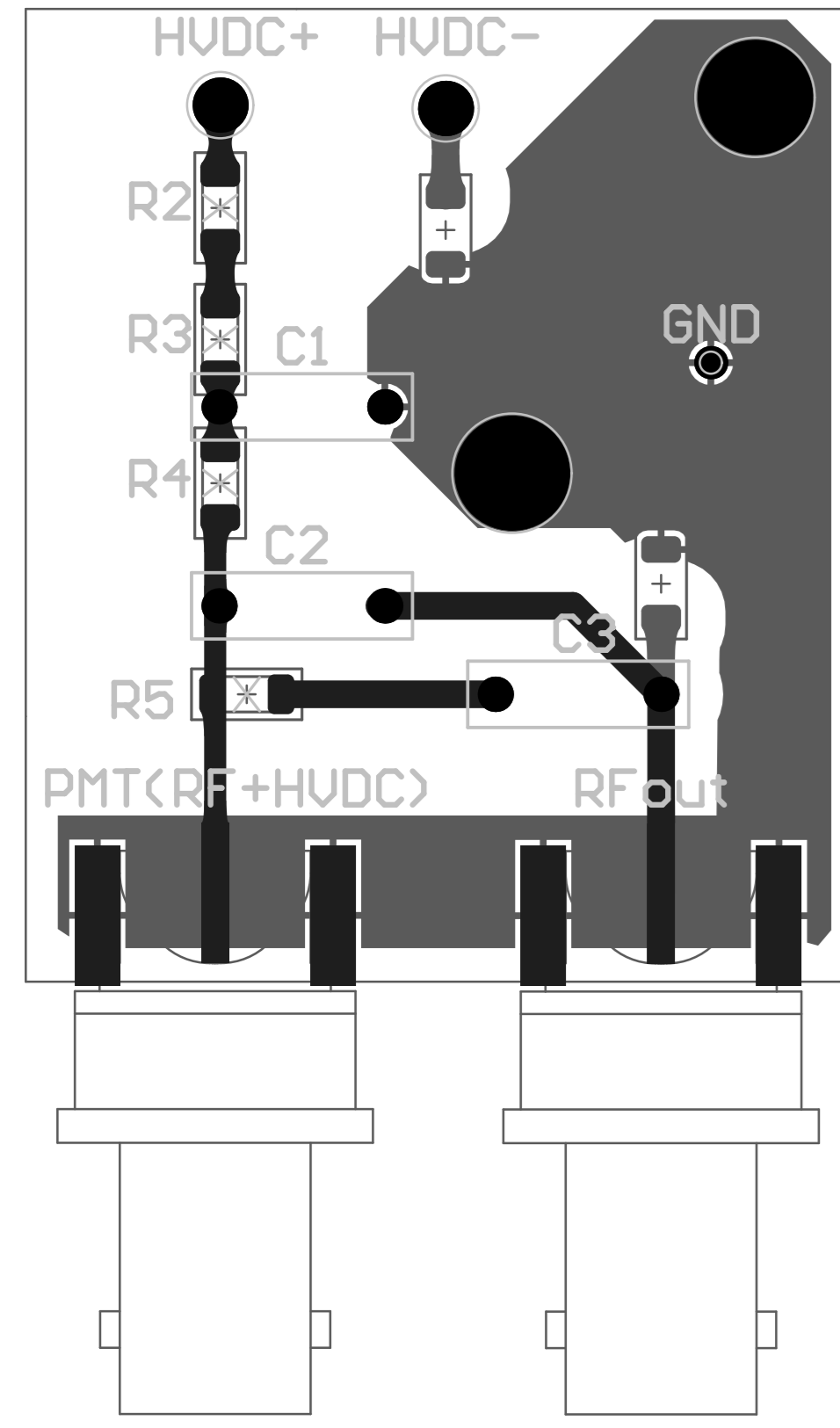
Designer: Jose Duron
Drawn by: Jose Duron
Approved by: Gary S. Varner

High Energy Physics Group, Instrumentation Development Lab	Designer: Jose Duron	IDLAB design #: IDL_18_045
Project name: WATCHMAN HV AC splitter	Drawn By: Jose Duron	Revision: A
Board name: WATCHMAN HV AC splitter	Approved By: Gary S. Varner	Variant: [No Variations]
		Modif. Date: 12/10/2018
		Sheet 1 of 2



UNIVERSITY
of HAWAII®
MĀNOA



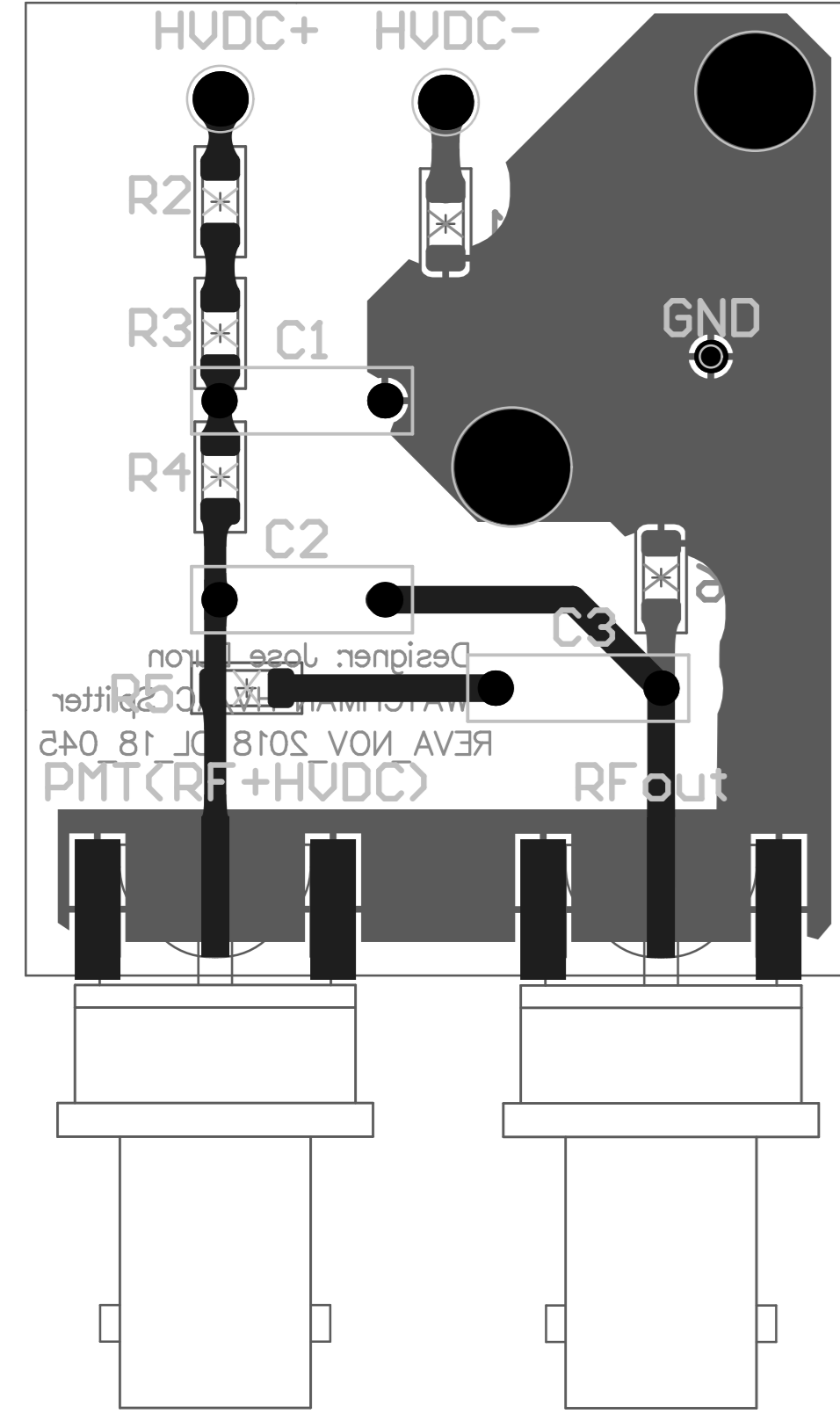


Instrumentation Development Laboratory High Energy Physics Group University of Hawaii at Manoa	ID: WATCHMAN HV AC splitter Code: IDL_18_045	Print Date: 12/10/2018 Size: A3 H	Signature: _____	Approved By: Gary S. Varner	Modif. Date: _____ Date: _____	Version: _____	File: WATCHMAN_HV_AC_splitter.Pcb	Revision: .Version	Designer: Jose Duron
------------------------------------------------------------------------------------------------------	---------------------------------------------------------------	--------------------------------------	------------------	-----------------------------	-----------------------------------	----------------	-----------------------------------	--------------------	----------------------

Multilayer Composite Print

Instrumentation Development Laboratory High Energy Physics Group University of Hawaii at Manoa	ID: WATCHMAN HV AC splitter Code: IDL_18_045	Print Date: 12/10/2018 Size: A3 H	Signature: _____	Approved By: Gary S. Varner	Modif. Date: _____ Date: _____	Version: _____	File: WATCHMAN_HV_AC_splitter.Pcb	Revision: .Version	Designer: Jose Duron
------------------------------------------------------------------------------------------------------	---------------------------------------------------------------	--------------------------------------	------------------	-----------------------------	-----------------------------------	----------------	-----------------------------------	--------------------	----------------------

Multilayer Composite Print

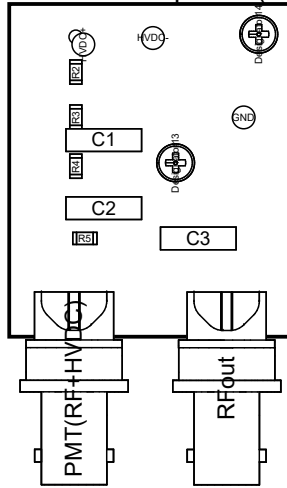


Instrumentation Development Laboratory High Energy Physics Group University of Hawaii at Manoa	ID: WATCHMAN HV AC splitter Code: IDL_18_045	Print Date: 12/10/2018 Size: A3 H	Signature: Gary S. Varner	Version: .Version	File: WATCHMAN HV AC splitter.Pcb	Sheet 1 of 1	Code: IDL_18_045
Title: Multilayer Composite Print		Drawn By: Jose Duron	Modif. Date: Date	Revision: .Version	Variant: [No Variations]	ASSEMBLY	ID: WATCHMAN HV AC splitter
		Approved By: Gary S. Varner	Print Date: 12/10/2018	Designer: Jose Duron			

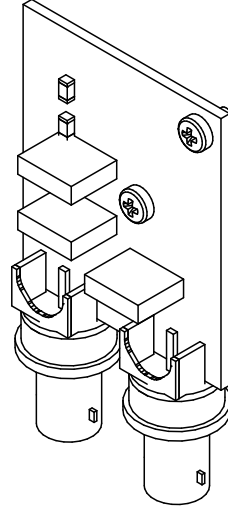
Title: Multilayer Composite Print		Print Date: 12/10/2018	Signature: Gary S. Varner	Version: .Version	File: WATCHMAN HV AC splitter.Pcb	Sheet 1 of 1	Code: IDL_18_045
		Drawn By: Jose Duron	Modif. Date: Date	Revision: .Version	Variant: [No Variations]	ASSEMBLY	ID: WATCHMAN HV AC splitter
		Approved By: Gary S. Varner	Print Date: 12/10/2018	Designer: Jose Duron			

University of Hawaii at Manoa
High Energy Physics Group
Instrumentation Development Laboratory

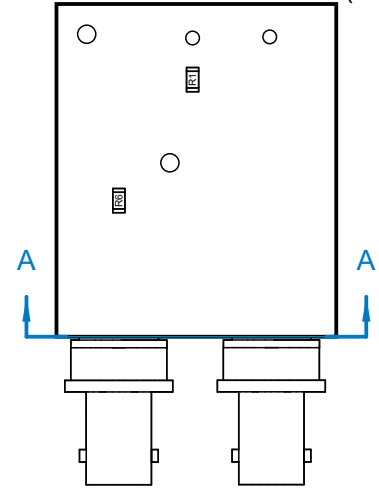
View from Top side (Scale 1:1)



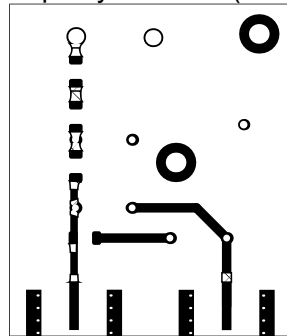
View from Top side (Scale 1:1)



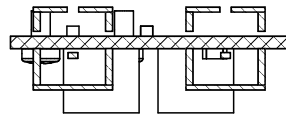
View from Bottom side (Scale 1:1)



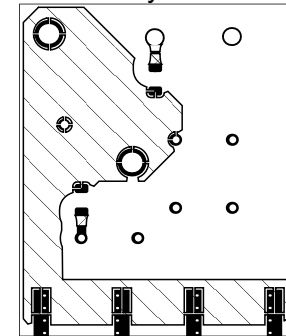
Top Layer - SIG1 (Scale 1:1)



SECTION A-A (Scale 1:1)



Bottom Layer - SIG4 (Scale 1:1)



Layer Stack Legend



Drill Table

Symbol	Count	Hole Size	Plated	Hole Tolerance
⊕	16	0.30mm	Plated	None
○	6	0.90mm	Plated	None
⊗	1	1.00mm	Plated	None
◇	2	2.00mm	Plated	None
□	2	2.60mm	Plated	None
	27 Total			

Bill Of Materials

Line #	Designator	Comment	Quantity	Model:Footprint
1	C1	47nF	1	Capacitor plastic 10x3x8.5mm R7.5
2	C2	1nF	1	Capacitor plastic 10x3x8.5mm R7.5
3	C3	4.7nF	1	Capacitor plastic 10x3x8.5mm R7.5
4	GND, HVDC-, HVDC+	TEST-POINT-SURFACE-MOUNT	3	
5	PMT(RF+HVDC), RFout	UCBBJE20-1	2	Circuit Board Bulkhead Edge Mount Coax "BNC" Style Receptacle
6	R1	200	1	Chip capacitor 1206 ROUNDED PAD
7	R2, R3, R4, R6	10k	4	Chip capacitor 1206 ROUNDED PAD
8	R5	22	1	Chip capacitor 1206 ROUNDED PAD