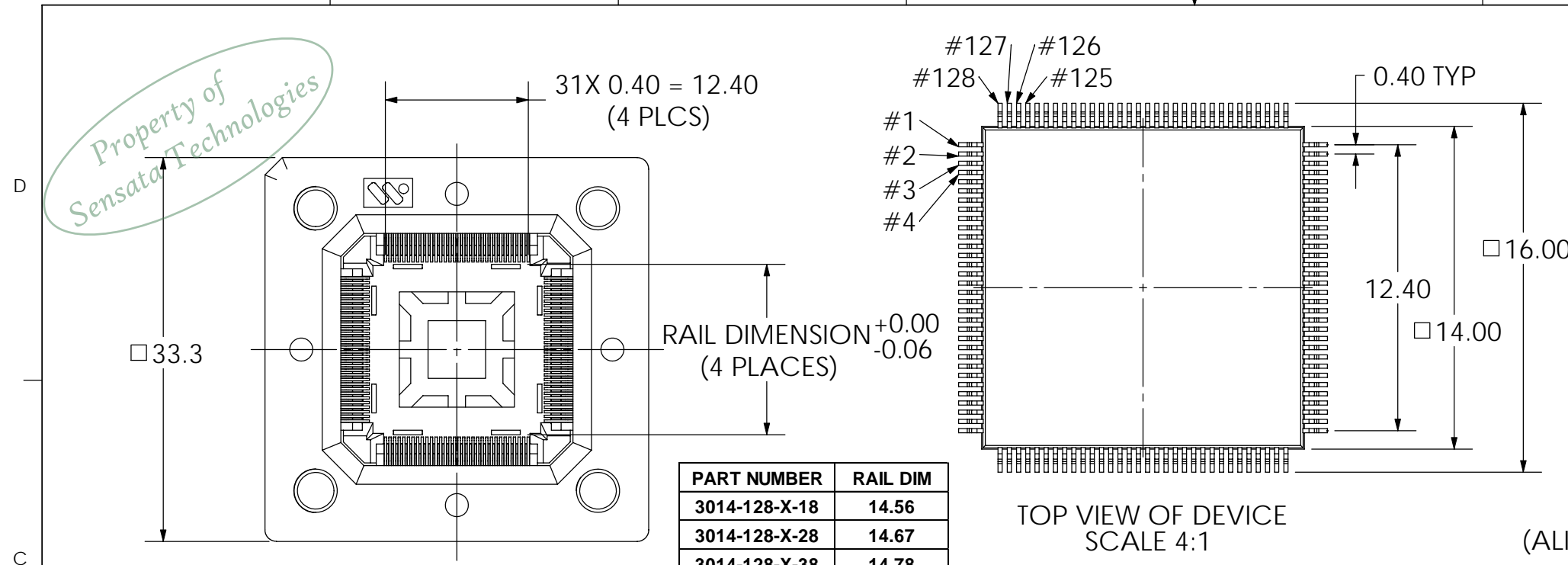
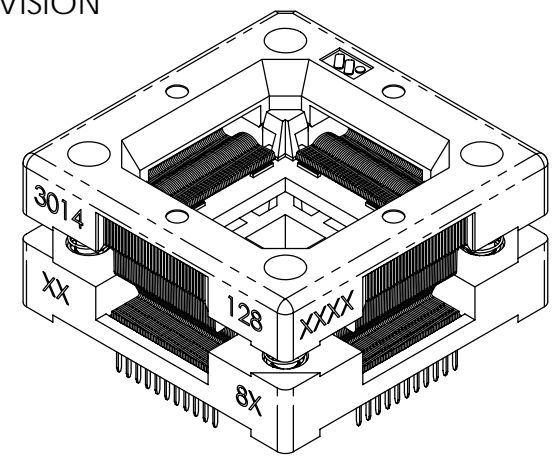
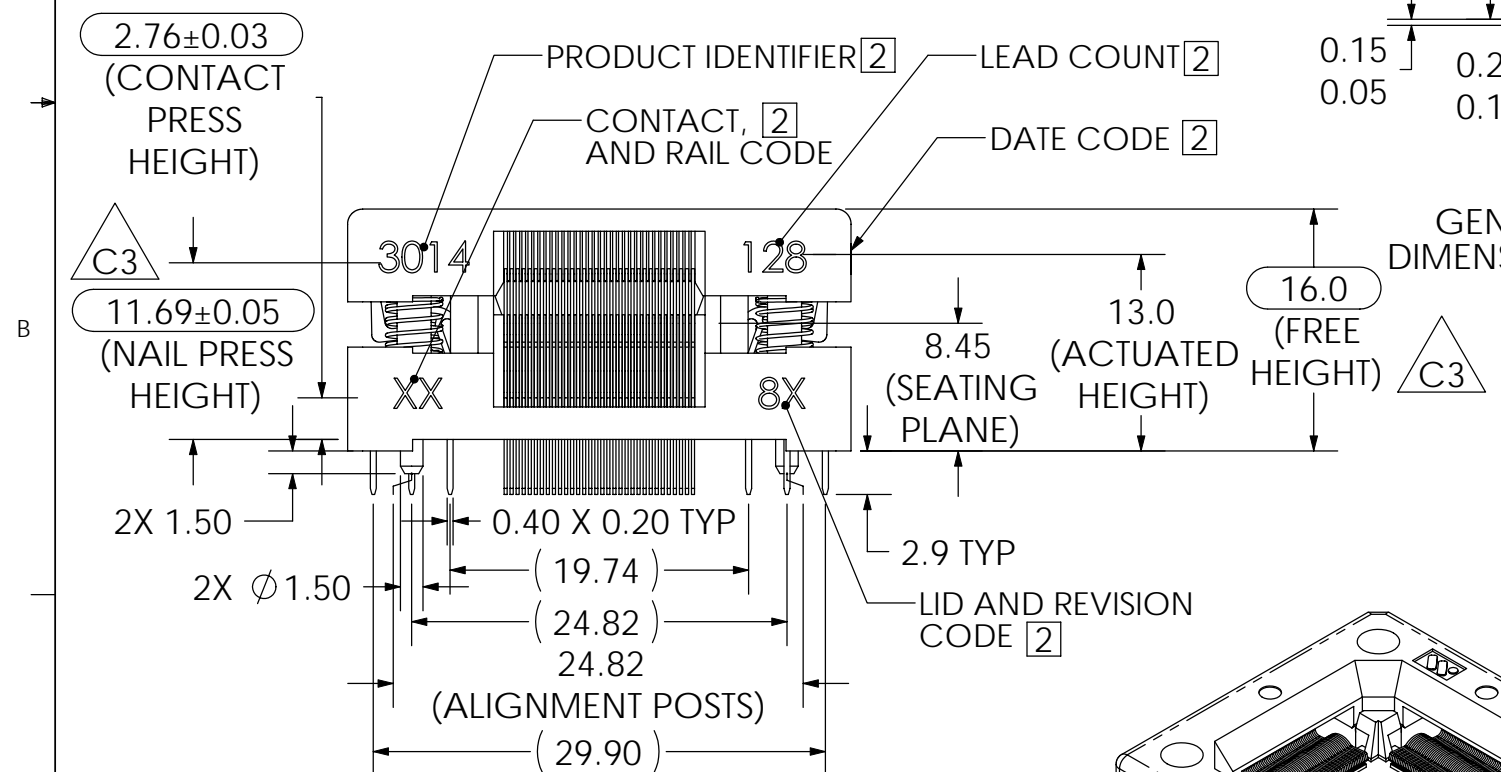
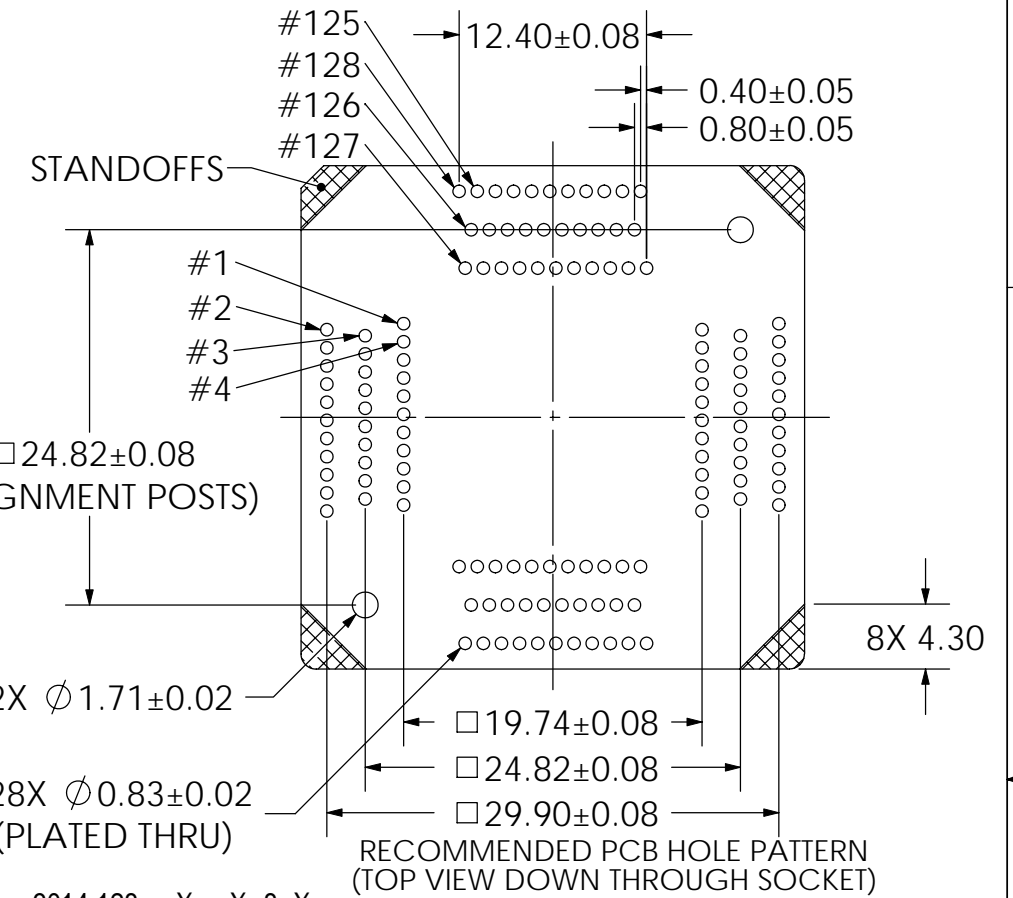
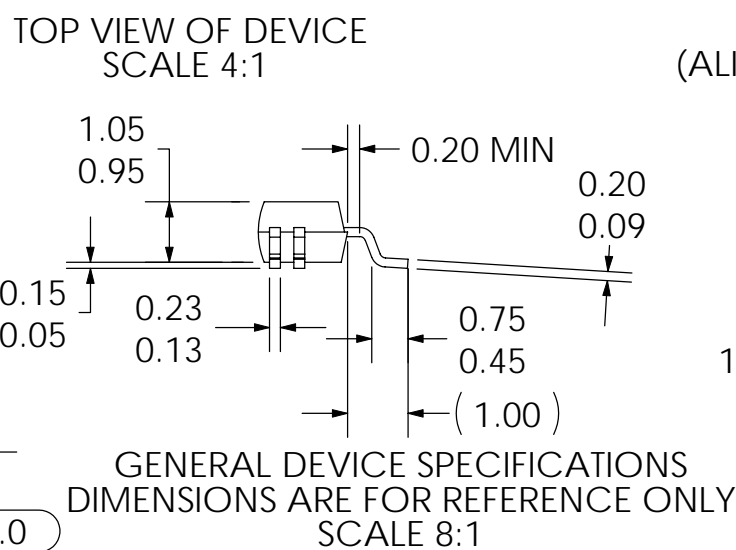


Property of  
Sensata Technologies

REVISIONS				
REV	ECN	DESCRIPTION	DATE	BY
C1	JT013000	REDRAWN PER CURRENT FORMAT.	6/23/2009	CC
C2	JT013287	ADDED 7 BACK TO CONTACT OPTIONS; UPDATED DEVICE NOTES.	11/26/2009	CC
C3	10-0200	ADDED 11.69±0.05 (NAIL PRESS HEIGHT) 16.0 WAS 16.00	5/5/2010	DLC



PART NUMBER	RAIL DIM
3014-128-X-18	14.56
3014-128-X-28	14.67
3014-128-X-38	14.78
3014-128-X-48	14.89
3014-128-X-58	15.00
3014-128-X-68	15.11



3014-128 - X - X 8 X

SOCKET ASSEMBLY REVISION

1 - 6 = RAIL POSITIONS\*

\*REQUIRES FACTORY DEVICE FIT UP

CONTACT MATERIAL & PLATING

0 = BeCu w/ Au (Overall) (SPECIAL ORDER)

6 = BeCu w/ Au-Au FLASH

7 = Pfin w/ Au-Au FLASH (SPECIAL ORDER)

ITEM NO.	QTY.	PART NUMBER	DESCRIPTION
5	4	006-027-00	CORNER NAIL
4	4	2800632	SPRING, COMP., .150IN. O.D., .200IN. LEN.
3	128	002-086-XX	CONTACT, REDUCED ACTUATION FORCE
2	1	001-493-00	SOCKET LID
1	1	001-492-0X	SOCKET BASE - MODIFIED FOR THERMAL BUTTON

3. THIS PRODUCT IS ROHS COMPLIANT.

[2] MARKING: 2.0 HIGH, COLOR - WHITE, LOCATE AS SHOWN.

1. MATERIAL AND FINISH:  
SOCKET LID - POLYETHERIMIDE  
SOCKET BASE - POLYETHERIMIDE  
CONTACTS - SEE CHART  
NAILS AND SPRINGS - STAINLESS STEEL, PASSIVATED.

NOTES, UNLESS OTHERWISE SPECIFIED:

LEGEND		INTERPRET DRAWING IN ACCORDANCE WITH ASME Y14.5M-1994		MATERIAL N/A		FINISH N/A		TITLE	
○	CRITICAL	TOLERANCES		REFERENCE		DRAWN PH		DATE 11/4/04	
3	TOTAL NO. OF USED	X.X ± 0.2 X.XX ± 0.08 X.XXX ± 0.025 ANGLE ± 1°		PROJECT / SERIES 3014		CHECKED		DATE	
PROJECTION		ANGLE ± 1°		ENGINEER PH		DATE 11/4/04		DRAWING NUMBER	
SIZE B		CONFIDENTIAL/PROPRIETARY		QUALITY		DATE		3014-128-X-X8	
THIS DOCUMENT CONTAINS PROPRIETARY INFORMATION OF WELLS-CTI. NOT TO BE USED, COPIED OR DISCLOSED WITHOUT PERMISSION. ALL RIGHTS RESERVED.		MFG. ENGR.		DATE		SCALE 2:1		UNITS:mm [in]	
DO NOT SCALE		SHEET 1 OF 1		REV. C3					