

6

5

4

3

2

1

E

D

C

B

A

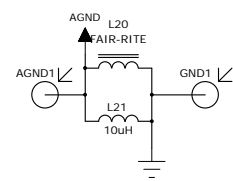
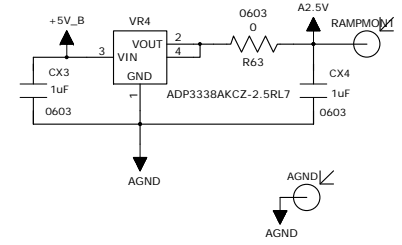
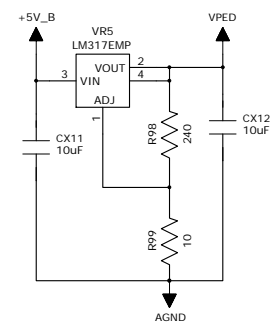
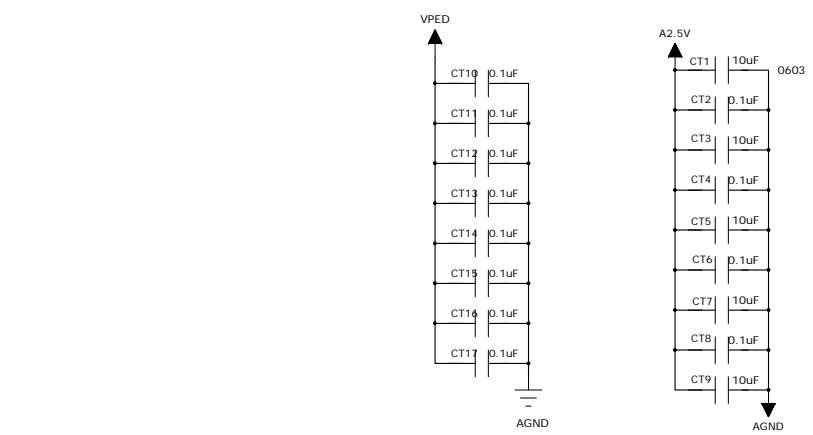
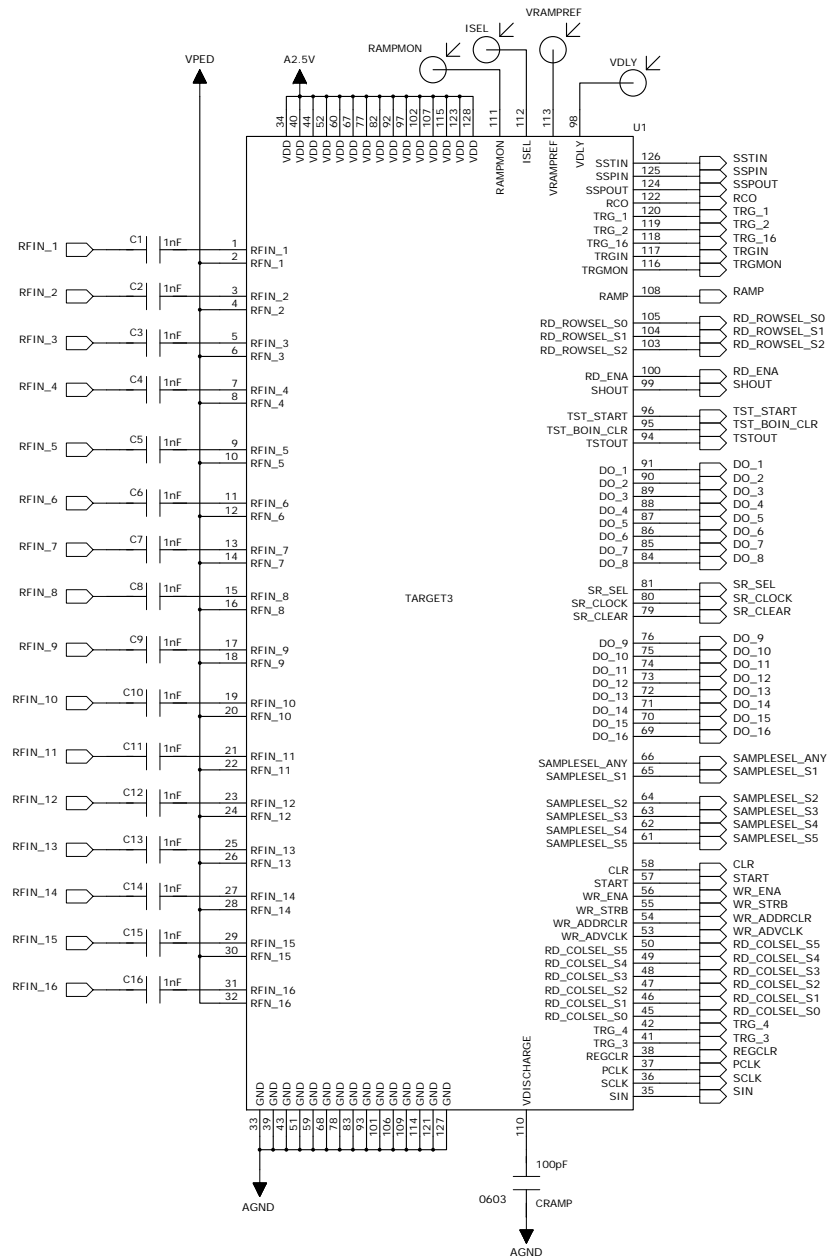
E

D

C

B

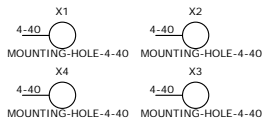
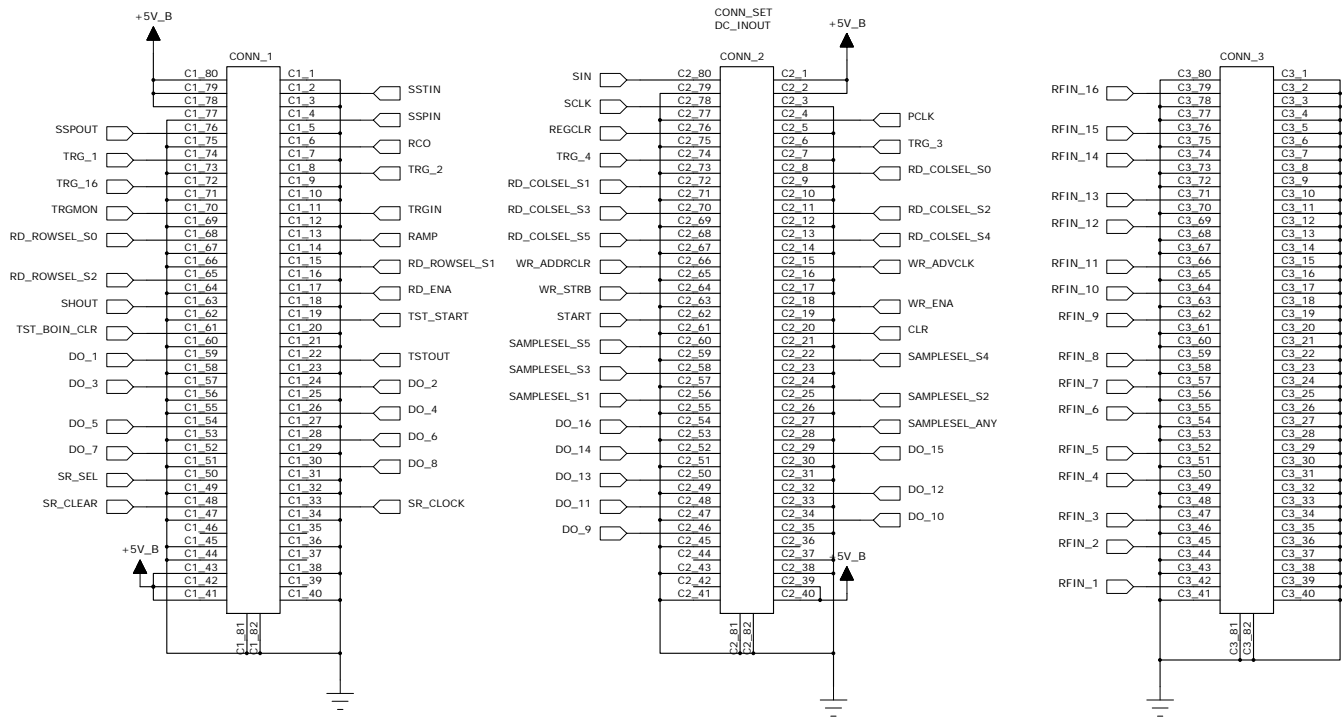
A



institution: University of Hawaii at Manoa
 High Energy Physics Lab
 Instrumentation Development Lab

title: TARGET3 Daughtercard
 revision: A
 IDLAB design #: IDL_11_031
 circuit design: GSV
 PCB design: DMD

sheet #: 1 of 2
 sheet description: Overall ASIC Control
 date last modified: November 7, 2011



institution:	University of Hawaii at Manoa High Energy Physics Lab Instrumentation Development Lab
title:	TARGET3 Daughtercard
revision:	A
IDLAB design #:	IDL_11_031
circuit design:	GSV
PCB design:	DMD
sheet #:	2 of 2
sheet description:	TARGET3 input/output
date last modified:	November 7, 2011