

6

5

4

3

2

1

E

E

D

D

C

C

B

B

A

A

institution:	University of Hawai`i at Manoa High Energy Physics Group Instrument Development Lab
title:	RITC_HPC_FMC
revision:	A
IDLAB design #:	IDL_11_028
circuit design:	KAN, MZA
PCB design:	CZ
sheet #:	1 of 4
sheet description:	block diagram
date last modified:	2012-02-01

6

5

4

3

2

1

E

E

D

D

C

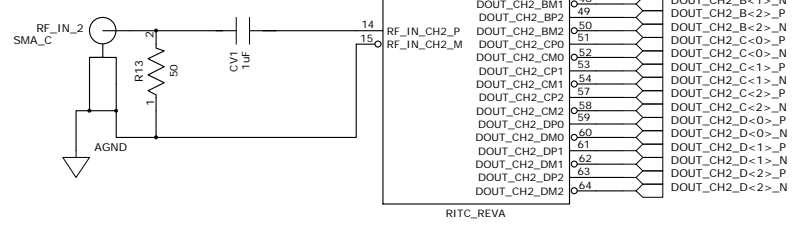
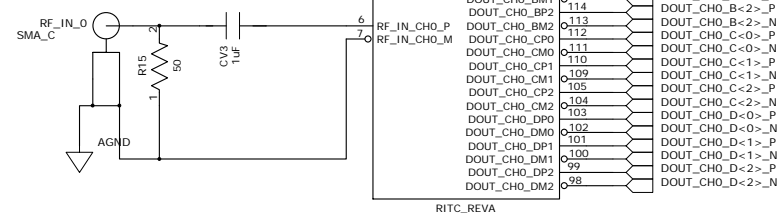
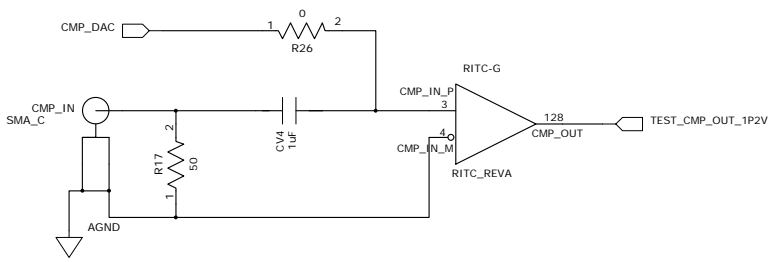
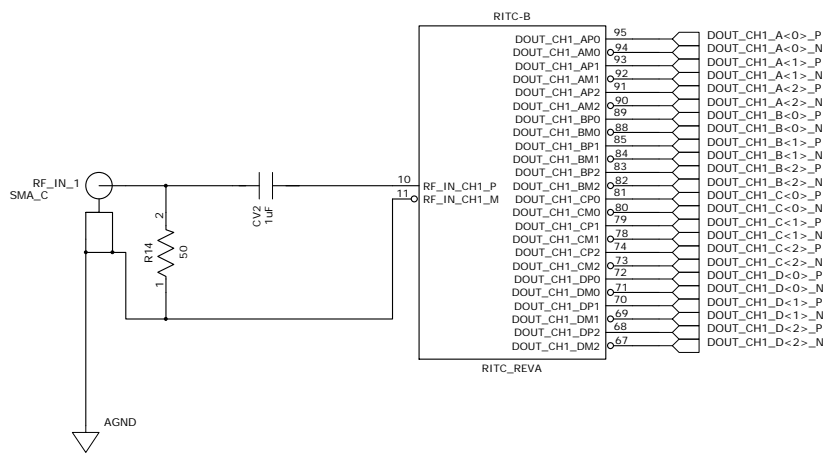
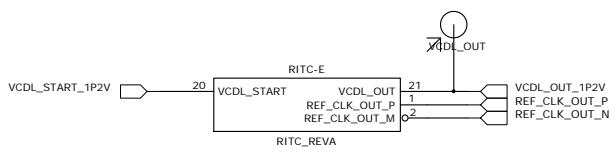
C

B

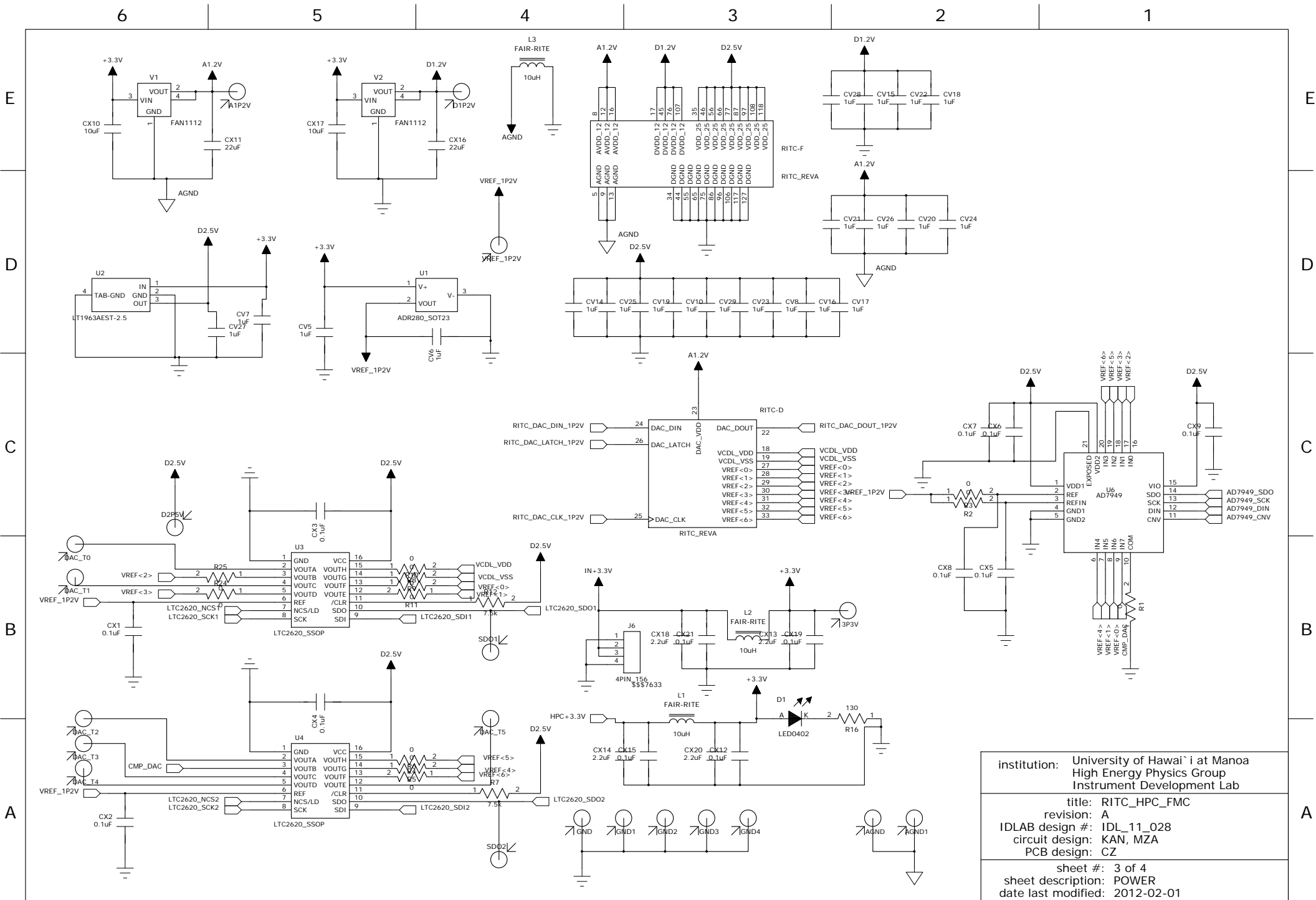
B

A

A



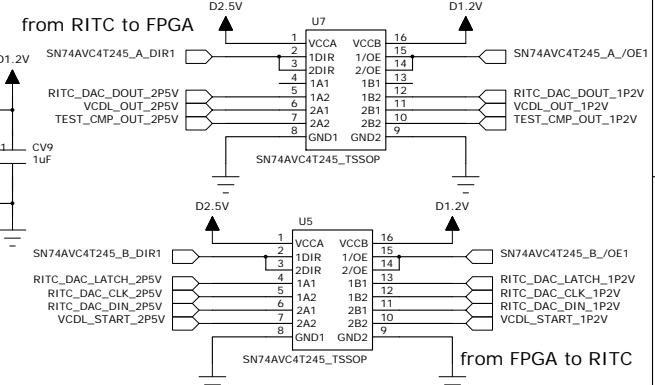
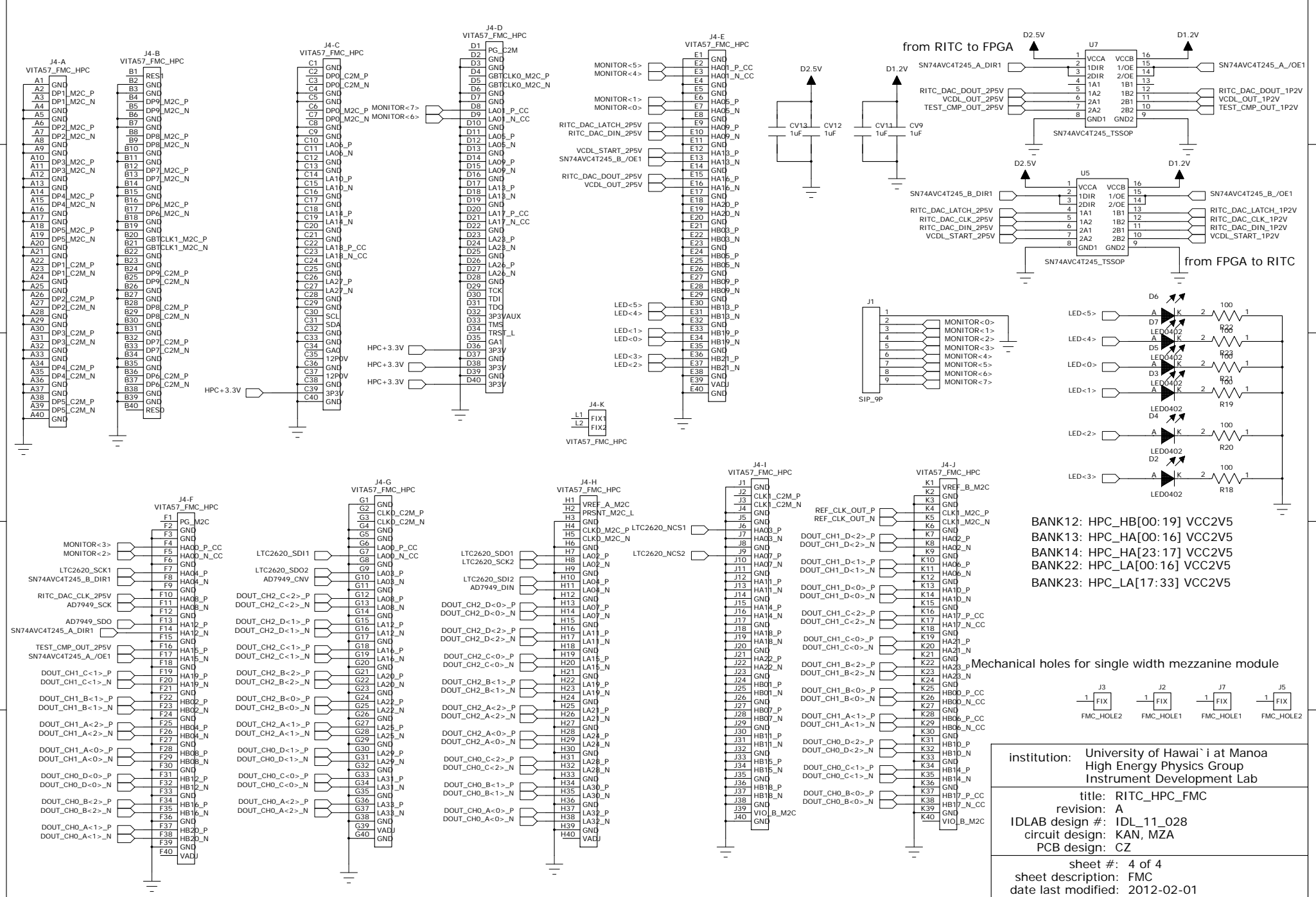
institution:	University of Hawai`i at Manoa High Energy Physics Group Instrument Development Lab
title:	RITC_HPC_FMC
revision:	A
IDLAB design #:	IDL_11_028
circuit design:	KAN, MZA
PCB design:	CZ
sheet #:	2 of 4
sheet description:	RITC
date last modified:	2012-02-01



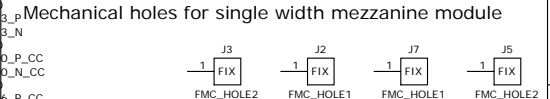
institution: University of Hawai'i at Manoa  
 High Energy Physics Group  
 Instrument Development Lab  
 title: RITC\_HPC\_FMC  
 revision: A  
 IDLAB design #: IDL\_11\_028  
 circuit design: KAN, MZA  
 PCB design: CZ  
 sheet #: 3 of 4  
 sheet description: POWER  
 date last modified: 2012-02-01

E  
D  
C  
B  
A

E  
D  
C  
B  
A



BANK12: HPC\_HB[00:19] VCC2V5  
 BANK13: HPC\_HA[00:16] VCC2V5  
 BANK14: HPC\_HA[23:17] VCC2V5  
 BANK22: HPC\_LA[00:16] VCC2V5  
 BANK23: HPC\_LA[17:33] VCC2V5



institution: University of Hawai'i at Manoa  
 High Energy Physics Group  
 Instrument Development Lab

title: RITC\_HPC\_FMC  
 revision: A  
 IDLAB design #: IDL\_11\_028  
 circuit design: KAN, MZA  
 PCB design: CZ

sheet #: 4 of 4  
 sheet description: FMC  
 date last modified: 2012-02-01

A

A