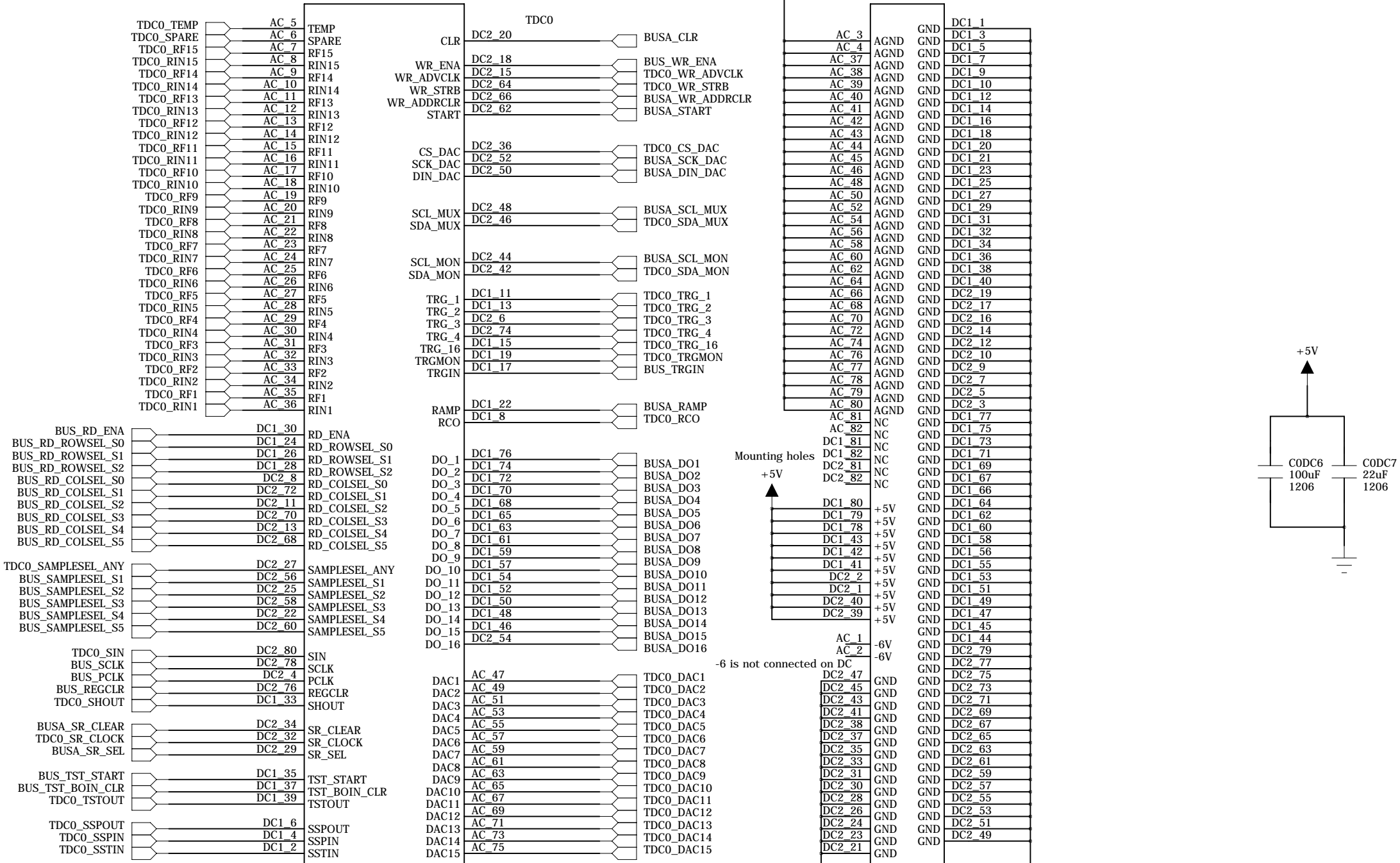


decide to connect to digital GND. 9/11/2012



TARGET4_DACMON_DC

institution:	University of Hawaii at Manoa High Energy Physics Lab Instrumentation Development Lab
title:	MB_9U_KLM_Readout
revision:	A
IDLAB design #:	IDL_12_029
circuit design:	XS
PCB design:	XS
sheet #:	1 of 18
sheet description:	TARGET4 Readout DC0
date last modified:	14 Sept. 2012

E

E

D

D

C

C

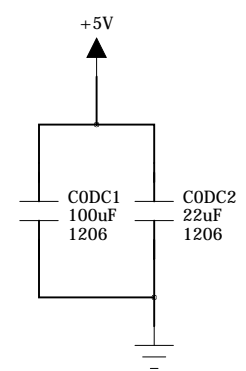
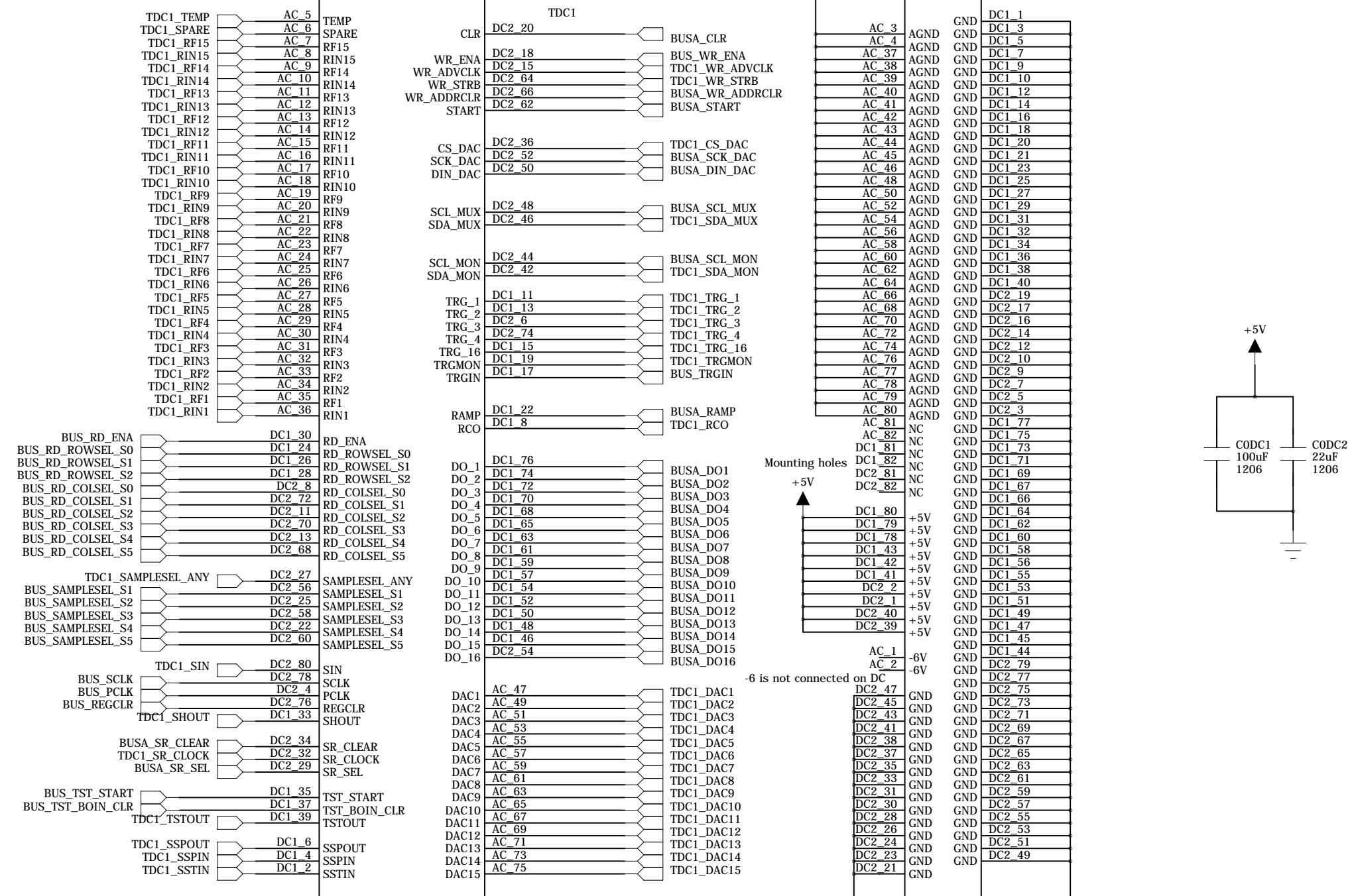
B

B

A

A

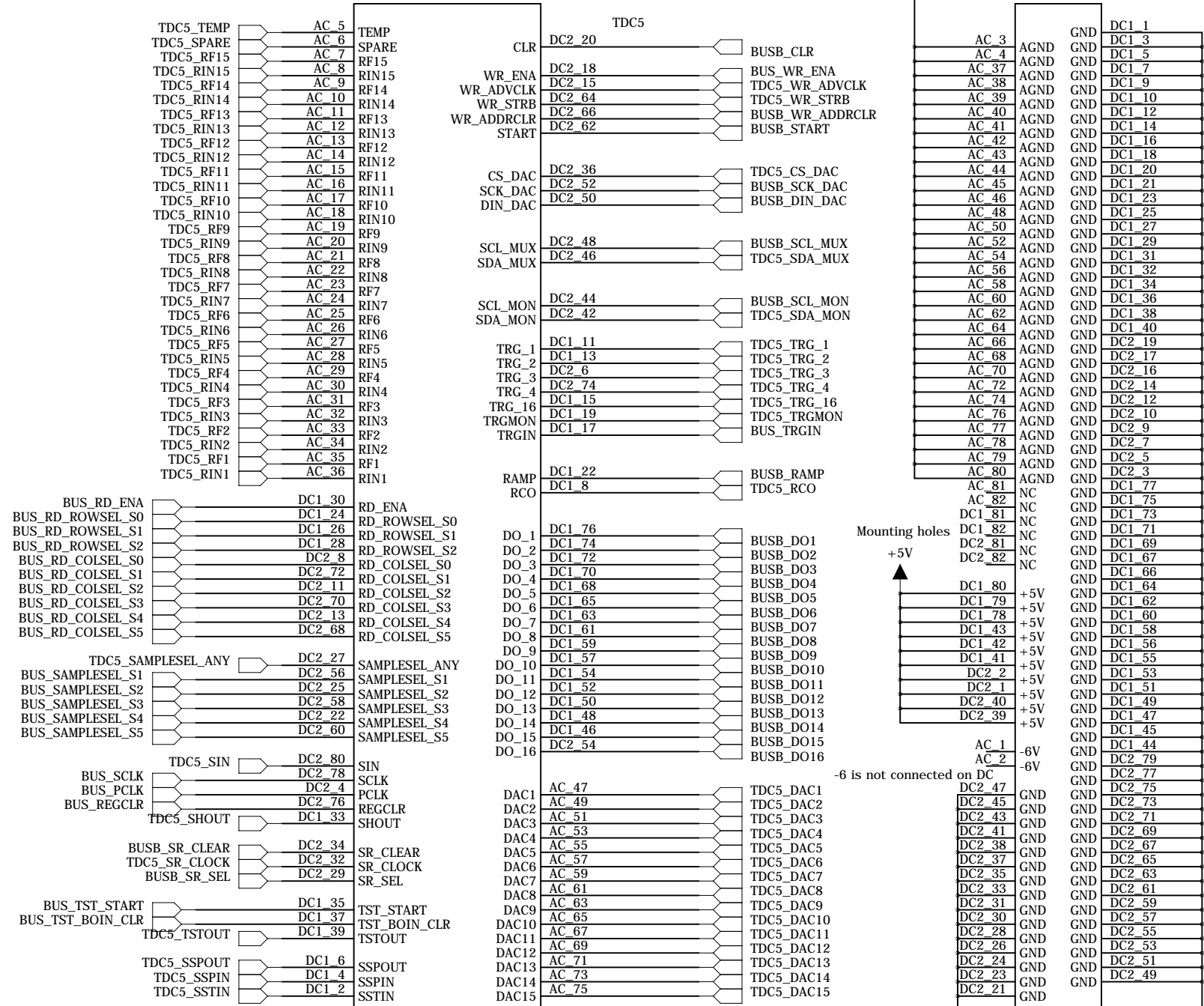
decide to connect to digital GND. 9/11/2012



TARGET4_DACMON_DC

institution:	University of Hawaii at Manoa High Energy Physics Lab Instrumentation Development Lab
title:	MB_9U_KLM_Readout
revision:	A
IDLAB design #:	IDL_12_029
circuit design:	XS
PCB design:	XS
sheet #:	2 of 18
sheet description:	TARGET4 Readout DC1
date last modified:	14 Sept. 2012

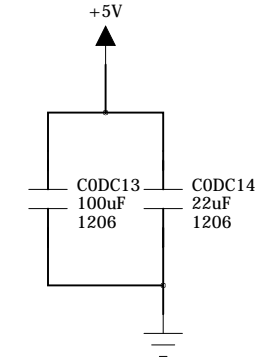
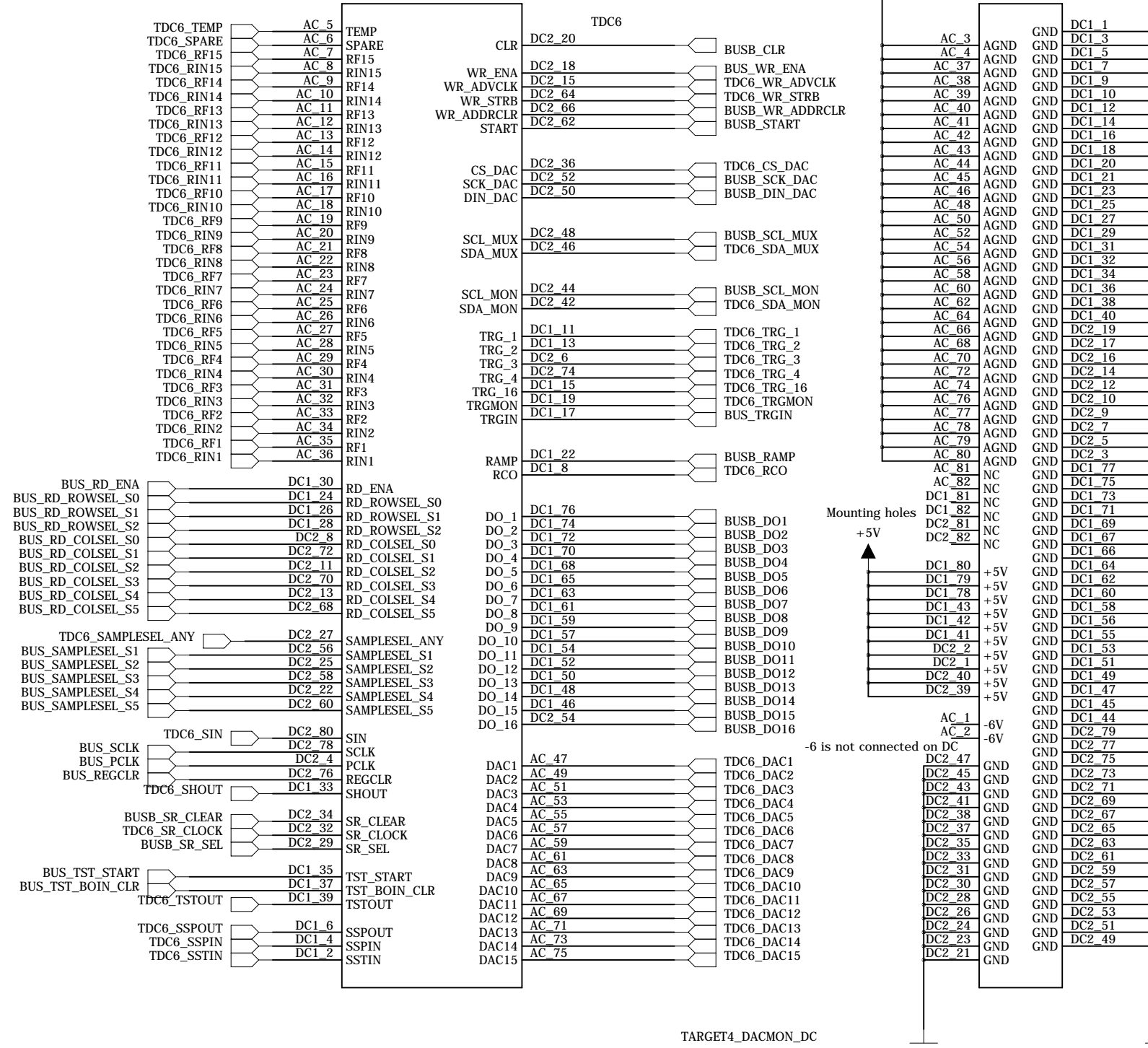
decide to connect to digital GND. 9/11/2012



TARGET4_DACMON_DC

institution:	University of Hawaii at Manoa High Energy Physics Lab Instrumentation Development Lab
title:	MB_9U_KLM_Readout
revision:	A
IDLAB design #:	IDL_12_029
circuit design:	XS
PCB design:	XS
sheet #:	6 of 18
sheet description:	TARGET4 Readout DC5
date last modified:	14 Sept. 2012

decide to connect to digital GND. 9/11/2012



TARGET4_DACMON_DC

institution:	University of Hawaii at Manoa High Energy Physics Lab Instrumentation Development Lab
title:	MB_9U_KLM_Readout
revision:	A
IDLAB design #:	IDL_12_029
circuit design:	XS
PCB design:	XS
sheet #:	7 of 18
sheet description:	TARGET4 Readout DC6
date last modified:	14 Sept. 2012

E

E

D

D

C

C

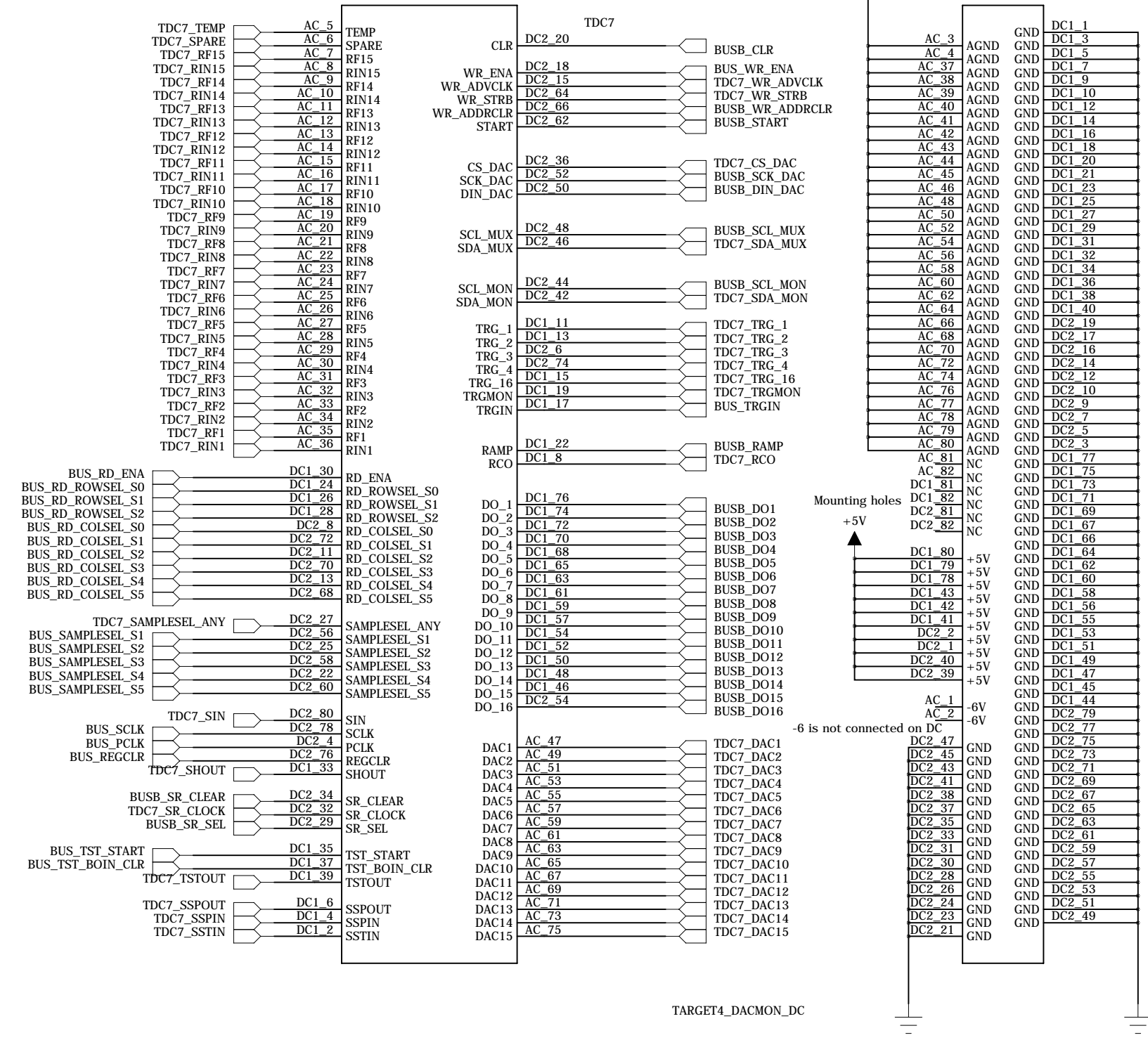
B

B

A

A

decide to connect to digital GND. 9/11/2012



TARGET4_DACMON_DC

institution:	University of Hawaii at Manoa High Energy Physics Lab Instrumentation Development Lab
title:	MB_9U_KLM_Readout
revision:	A
IDLAB design #:	IDL_12_029
circuit design:	XS
PCB design:	XS
sheet #:	8 of 18
sheet description:	TARGET4 Readout DC7
date last modified:	14 Sept. 2012

E

E

D

D

C

C

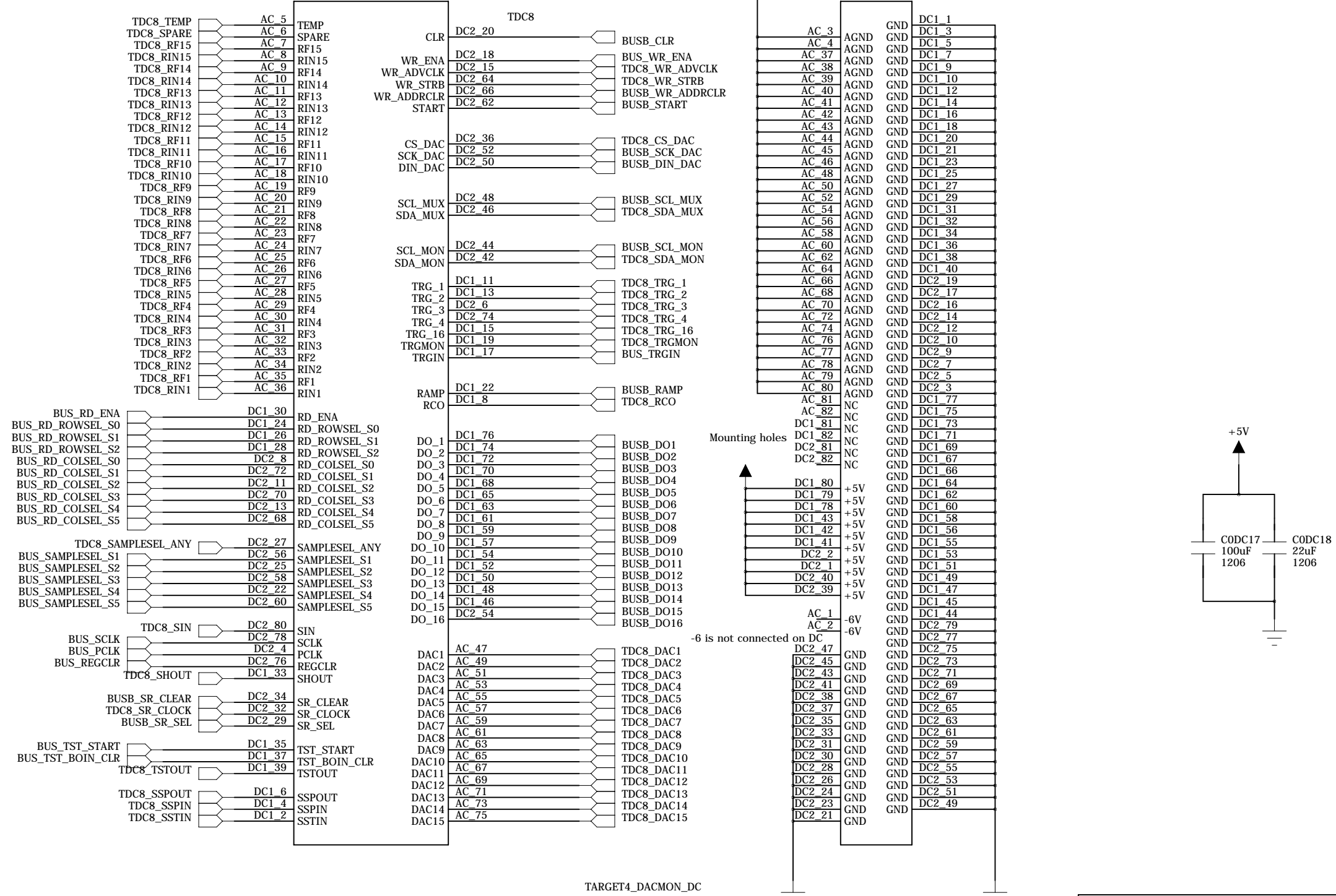
B

B

A

A

decide to connect to digital GND. 9/11/2012

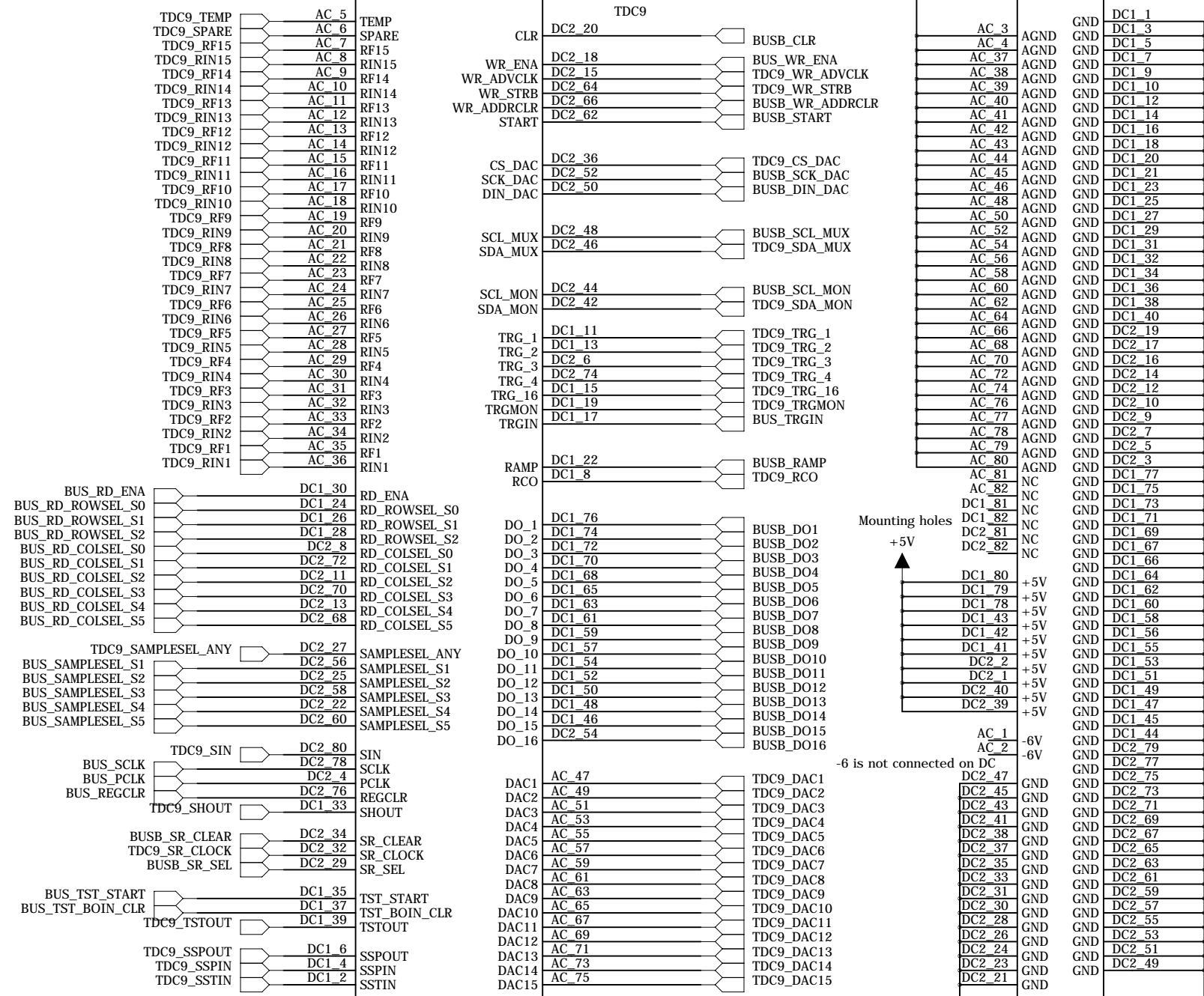


institution: University of Hawaii at Manoa
High Energy Physics Lab
Instrumentation Development Lab

title: MB_9U_KLM_Readout
revision: A
IDLAB design #: IDL_12_029
circuit design: XS
PCB design: XS

sheet #: 9 of 18
sheet description: TARGET4 Readout DC8
date last modified: 14 Sept. 2012

decide to connect to digital GND. 9/11/2012



TARGET4_DACMON_DC

institution:	University of Hawaii at Manoa High Energy Physics Lab Instrumentation Development Lab
title:	MB_9U_KLM_Readout
revision:	A
IDLAB design #:	IDL_12_029
circuit design:	XS
PCB design:	XS
sheet #:	10 of 18
sheet description:	TARGET4 Readout DC9
date last modified:	14 Sept. 2012

6

5

4

3

2

1

E

E

D

D

C

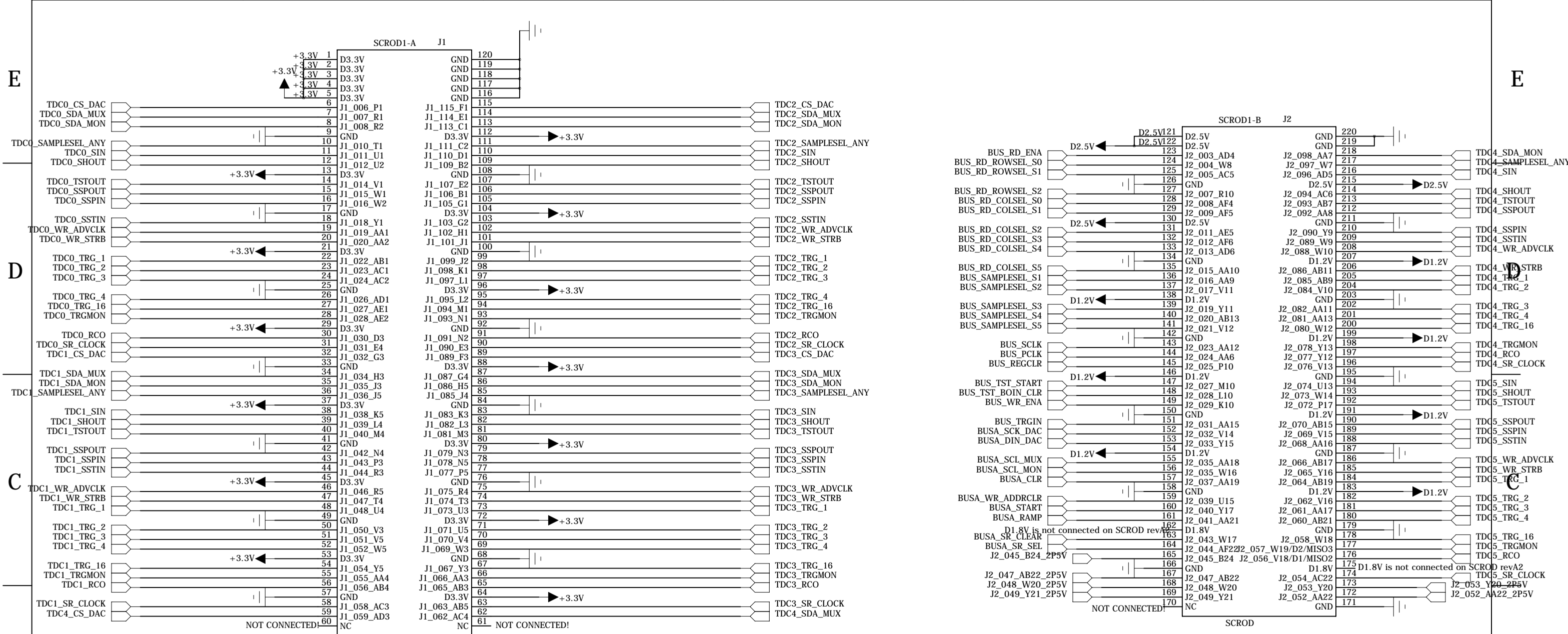
C

B

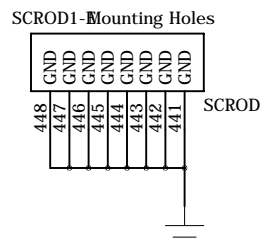
B

A

A



pin 60 and 61 are NOT connected on SCROD revA2

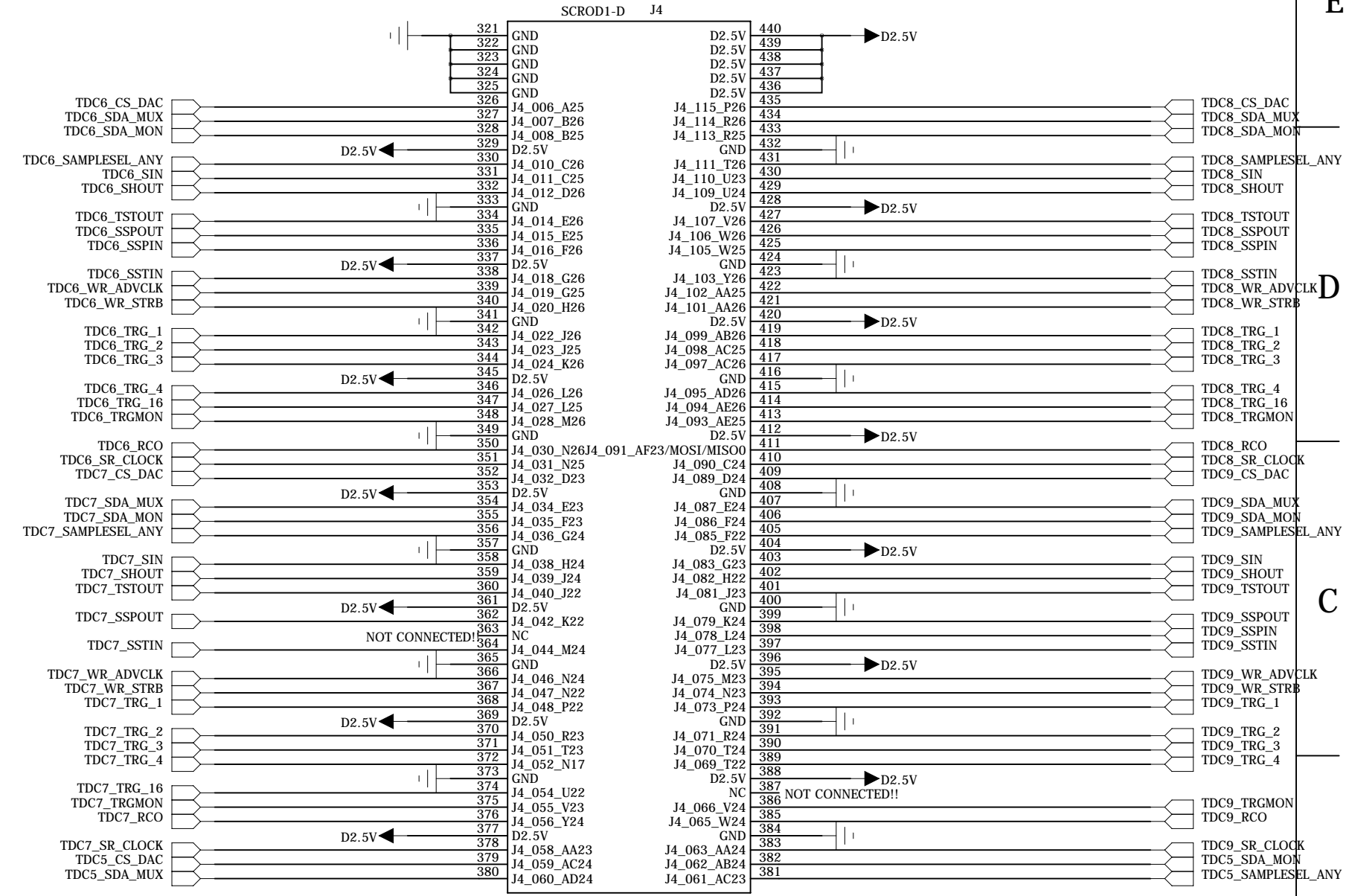
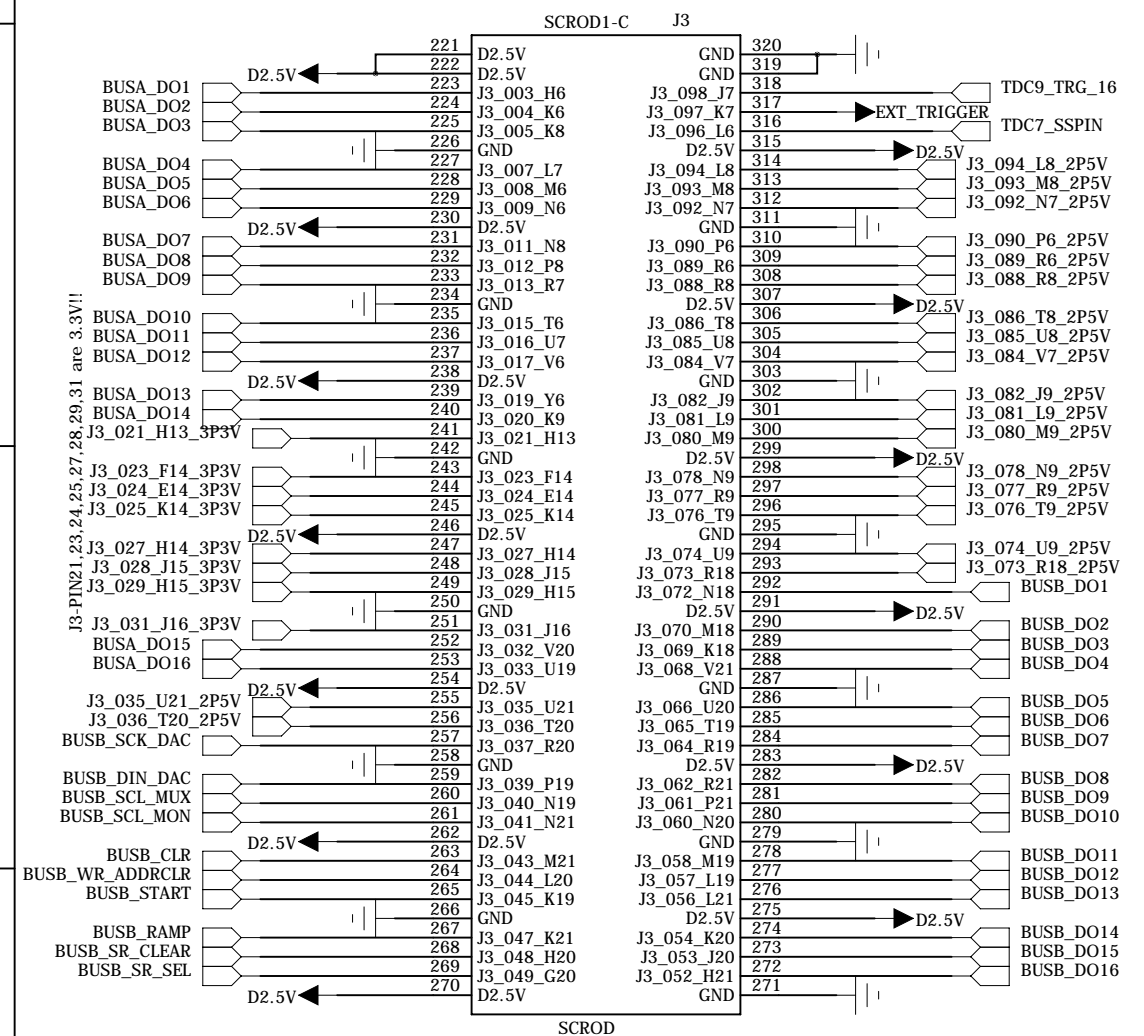


institution:	University of Hawaii at Manoa High Energy Physics Lab Instrumentation Development Lab
title:	MB_9U_KLM_Readout
revision:	A
IDLAB design #:	IDL_12_029
circuit design:	XS
PCB design:	XS
sheet #:	11 of 18
sheet description:	SCROD revA2 Page1
date last modified:	14 Sept. 2012

E

E

6 more spare pins on page-J2 connector. (2.5V)
 8 spare pins. (3.3V) 19 spare pins. (2.5V)
 TOTAL 33 spare pins. (2.5V AND 3.3V) !! All are routed to Spare Connectors.



D

D

C

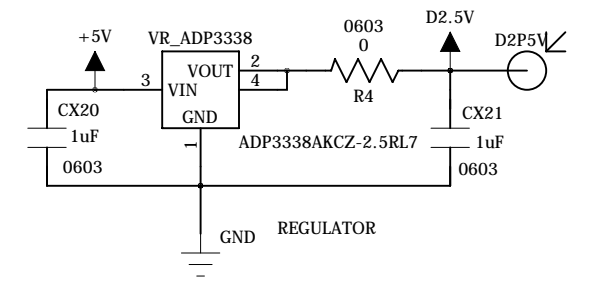
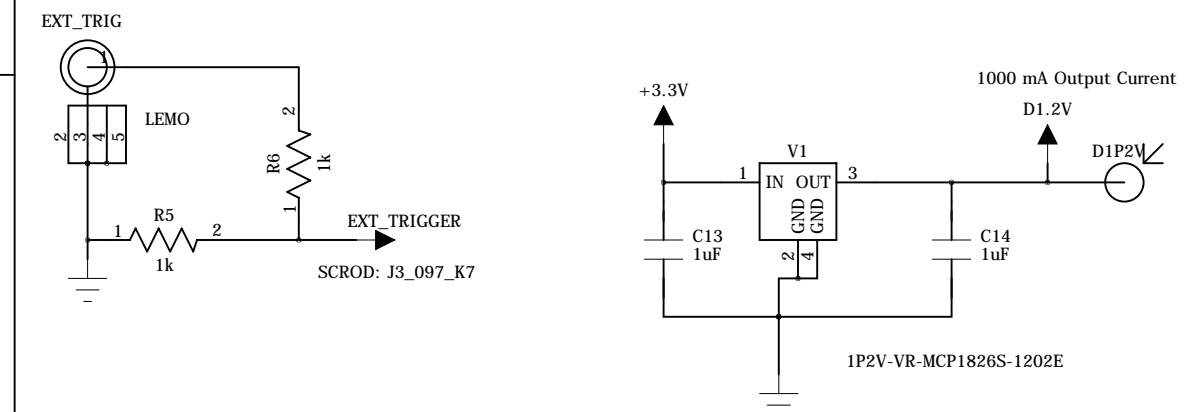
C

B

B

A

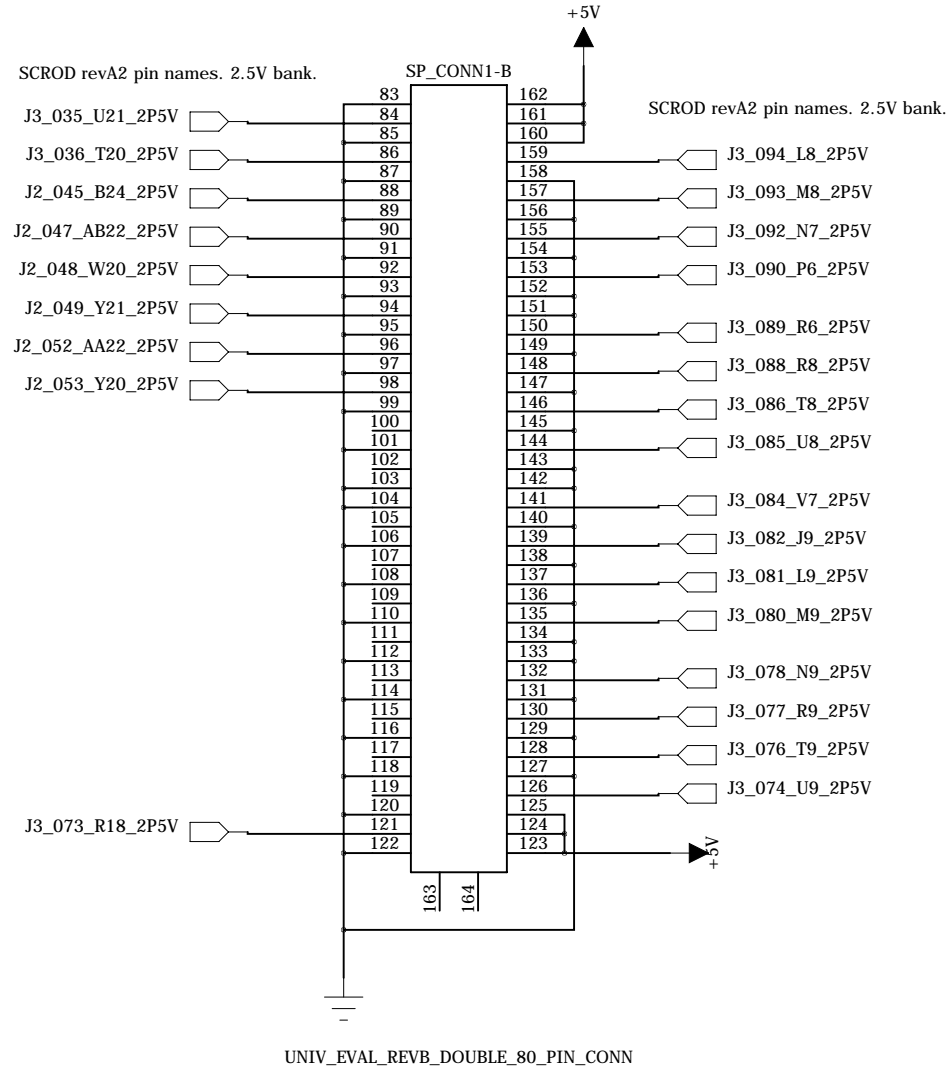
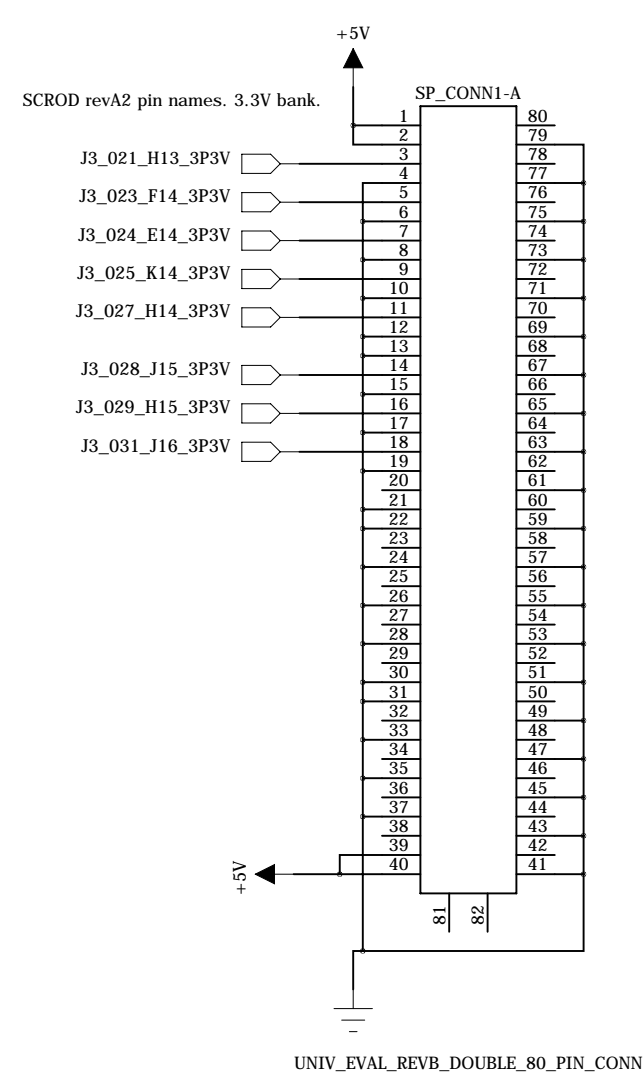
A



institution: University of Hawaii at Manoa
 High Energy Physics Lab
 Instrumentation Development Lab

title: MB_9U_KLM_Readout
 revision: A
 IDLAB design #: IDL_12_029
 circuit design: XS
 PCB design: XS

sheet #: 12 of 18
 sheet description: SCROD revA2 Page2
 date last modified: 14 Sept. 2012



Universal Eval Board revB has different pin order of connectors. The first pin is on the upper left side when it's on top layer.

institution:	University of Hawaii at Manoa High Energy Physics Lab Instrumentation Development Lab
title:	MB_9U_KLM_Readout
revision:	A
IDLAB design #:	IDL_12_029
circuit design:	XS
PCB design:	XS
sheet #:	13 of 18
sheet description:	Universal Eval RevB Connectors
date last modified:	14 Sept. 2012

6

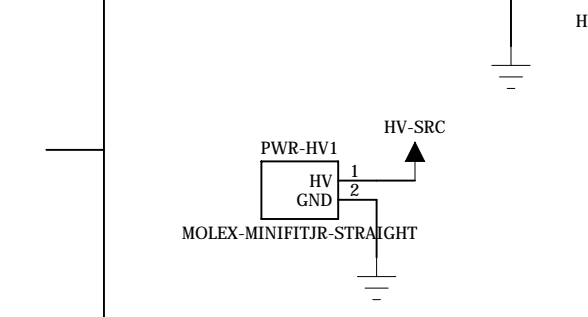
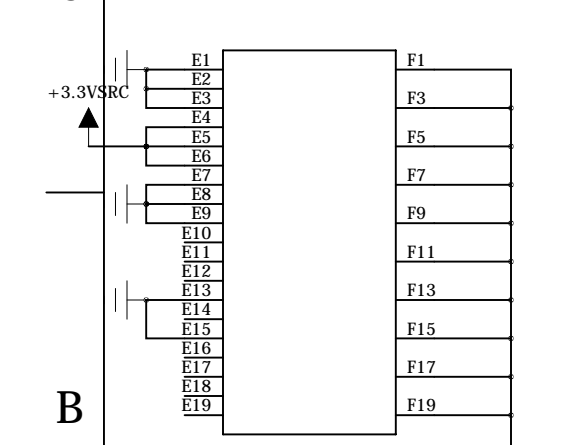
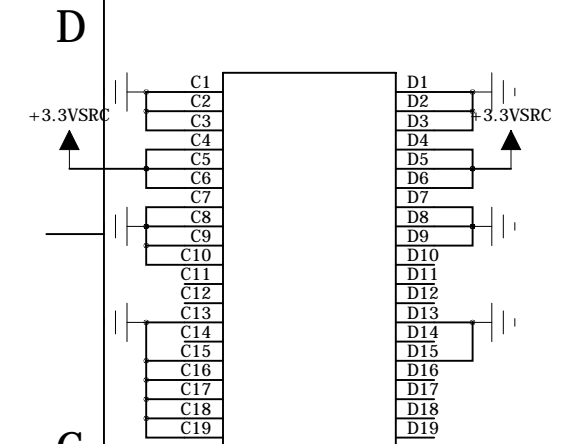
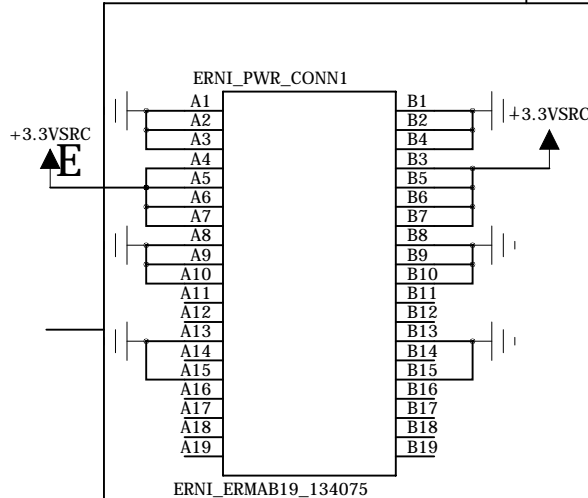
5

4

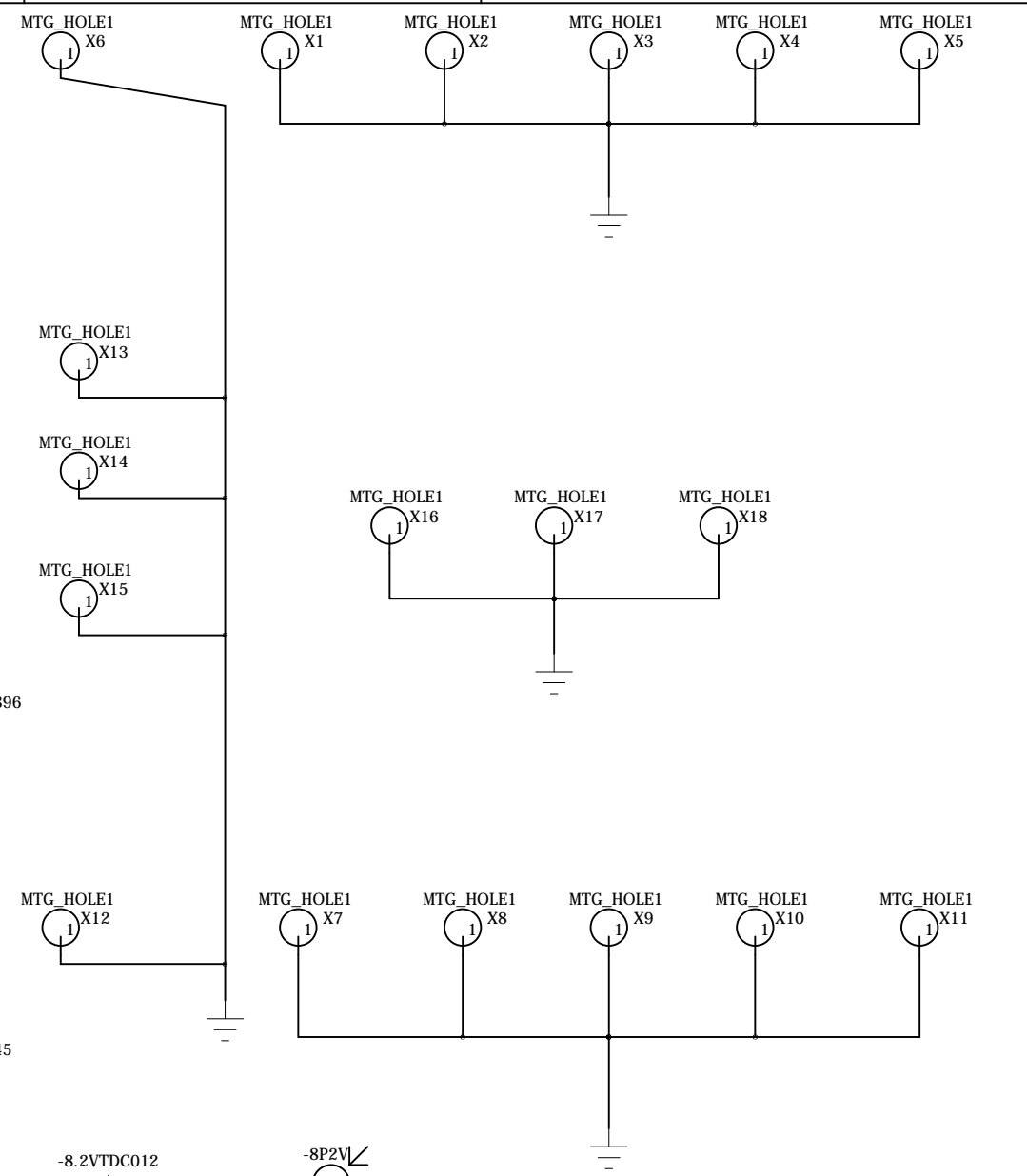
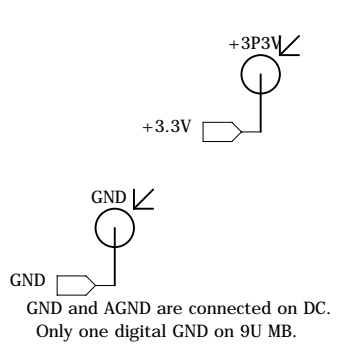
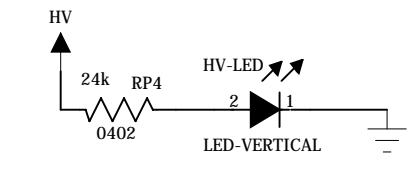
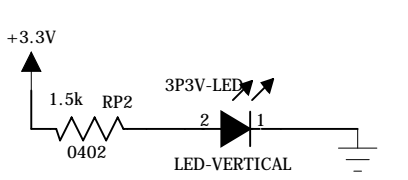
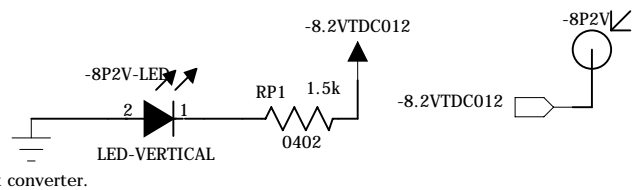
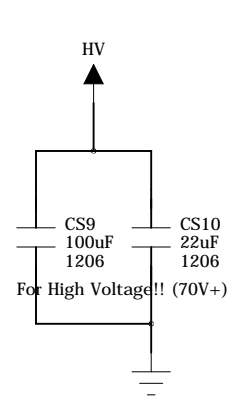
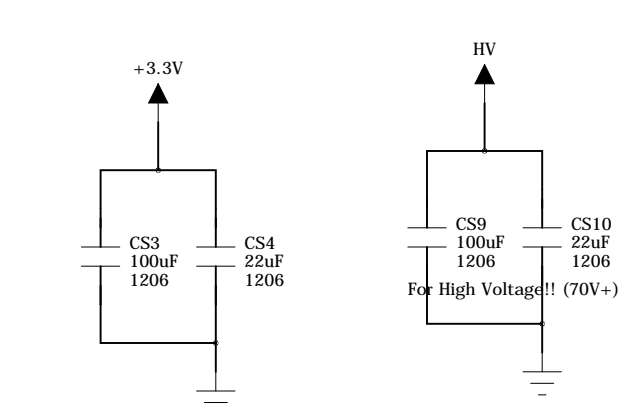
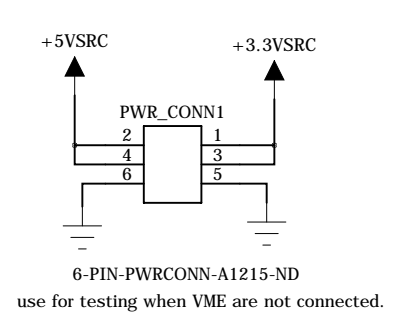
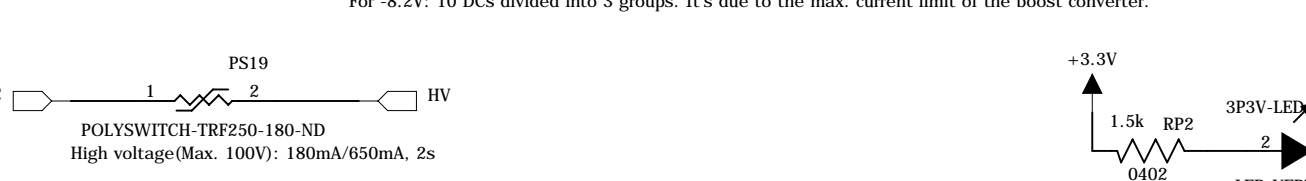
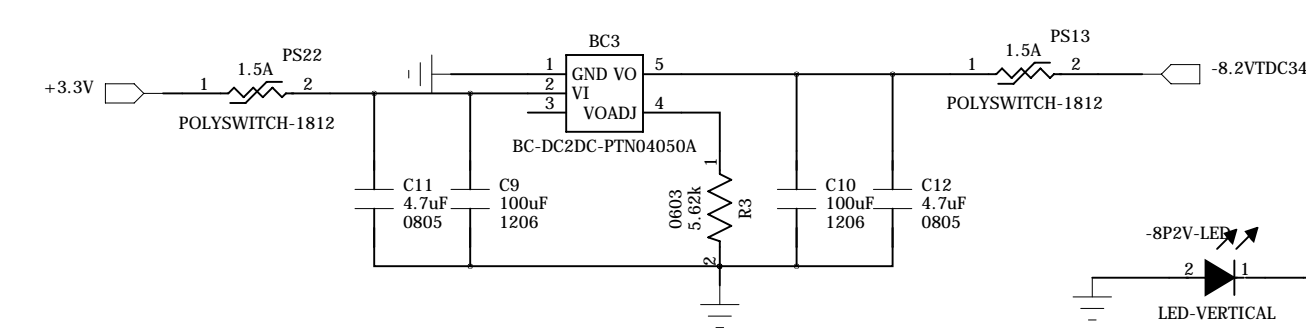
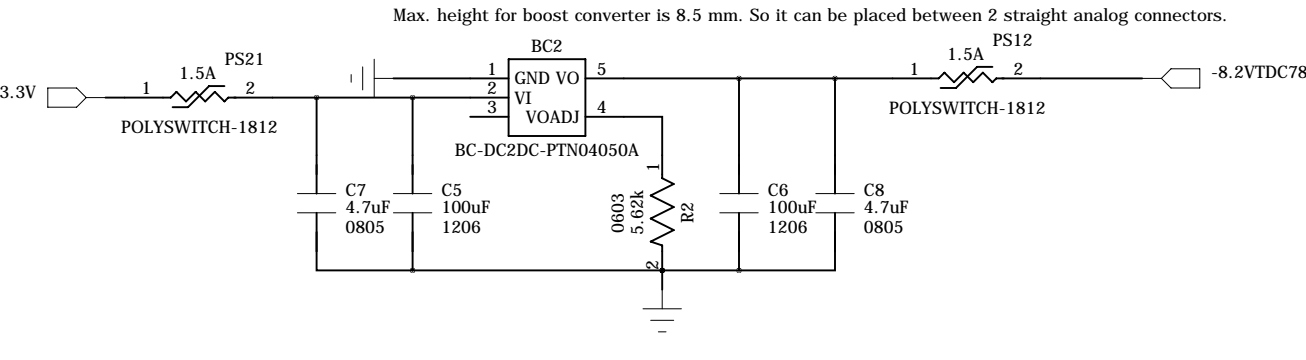
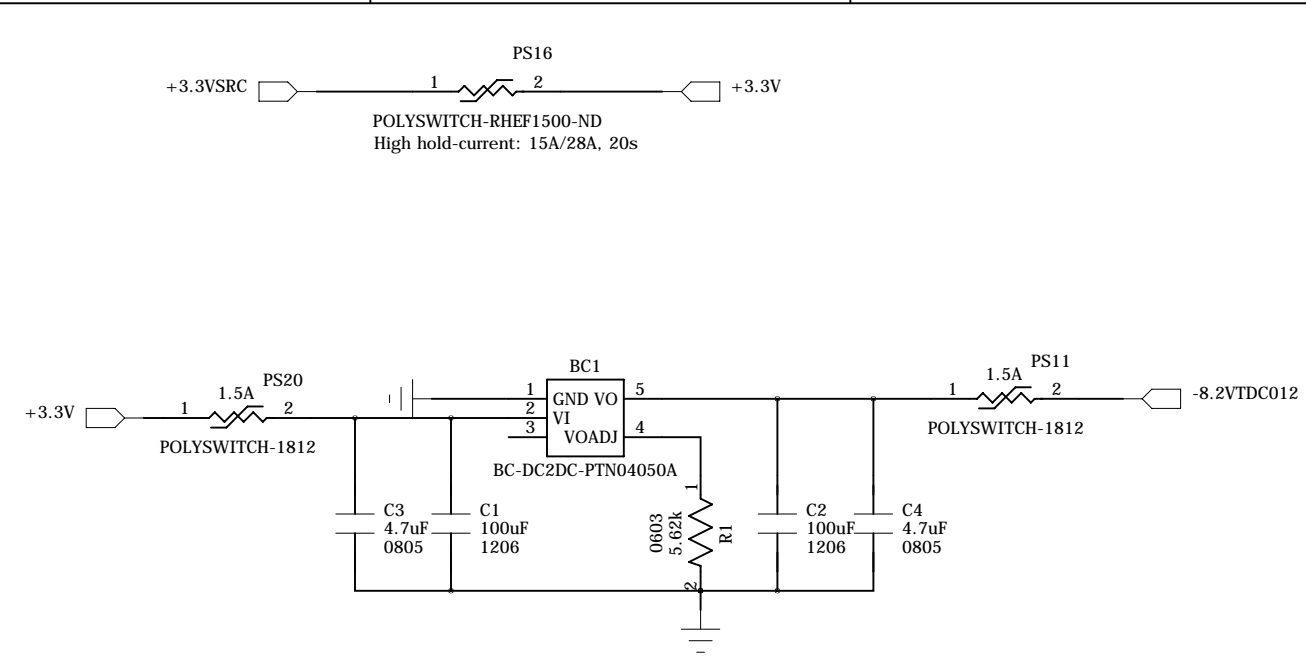
3

2

1



No surface-mount PolySwitch for HV. Add through-hole type?



institution:	University of Hawaii at Manoa High Energy Physics Lab Instrumentation Development Lab
title:	MB_9U_KLM_Readout
revision:	A
IDLAB design #:	IDL_12_029
circuit design:	XS
PCB design:	XS
sheet #:	14 of 18
sheet description:	Power Sources and Polyswitches
date last modified:	14 Sept. 2012

E

D

C

B

A

6

5

4

3

2

1

E

E

D

D

C

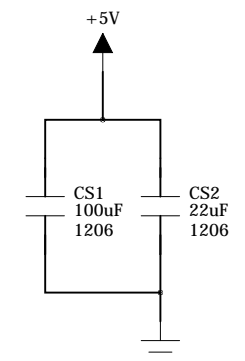
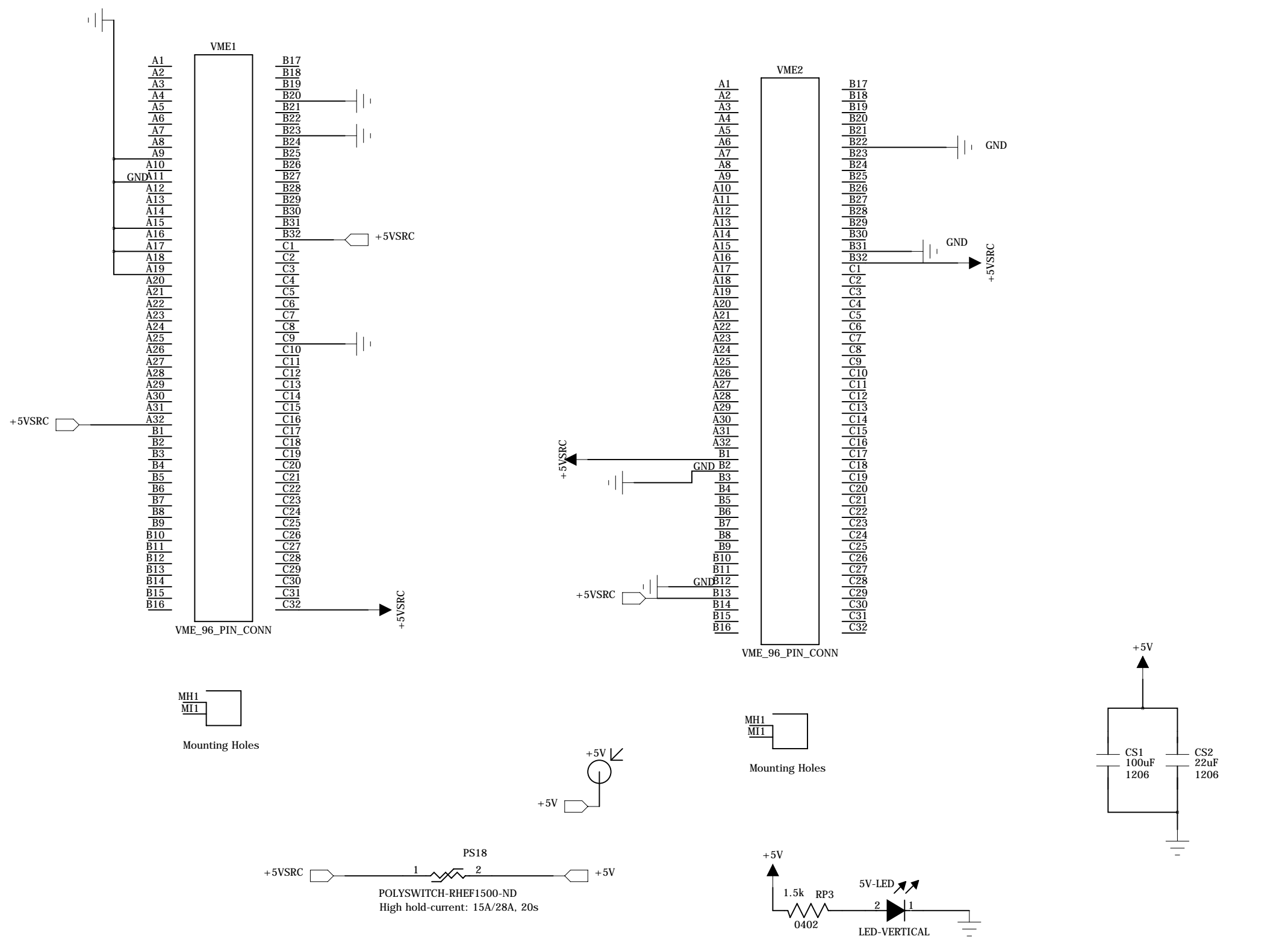
C

B

B

A

A



institution:	University of Hawaii at Manoa High Energy Physics Lab Instrumentation Development Lab
title:	MB_9U_KLM_Readout
revision:	A
IDLAB design #:	IDL_12_029
circuit design:	XS
PCB design:	XS
sheet #:	15 of 18
sheet description:	VME Connectors
date last modified:	14 Sept. 2012

E

E

D

D

C

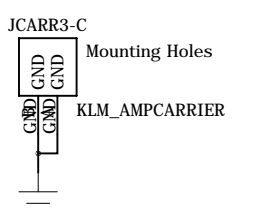
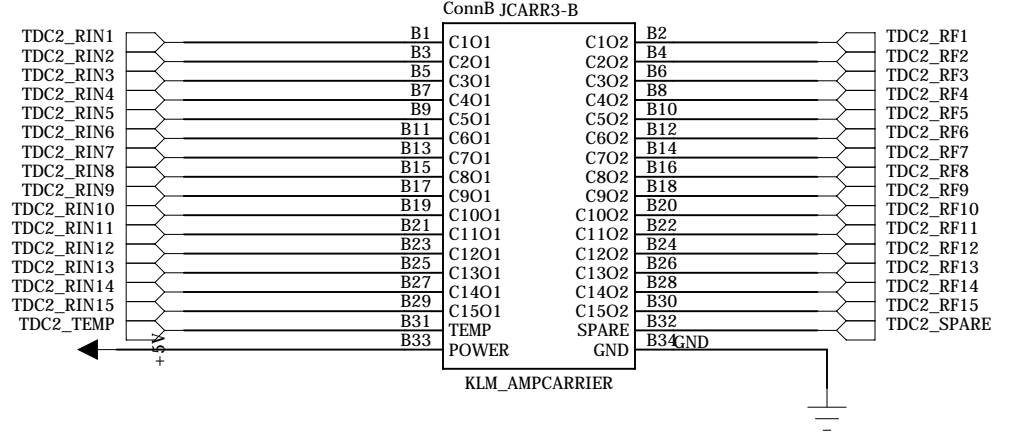
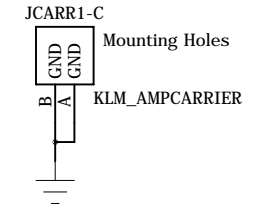
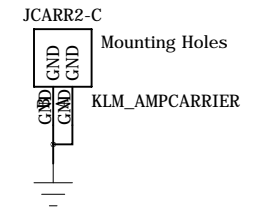
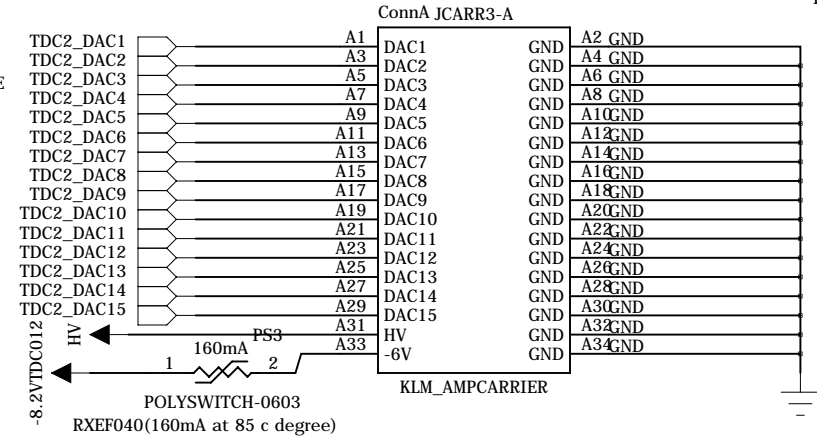
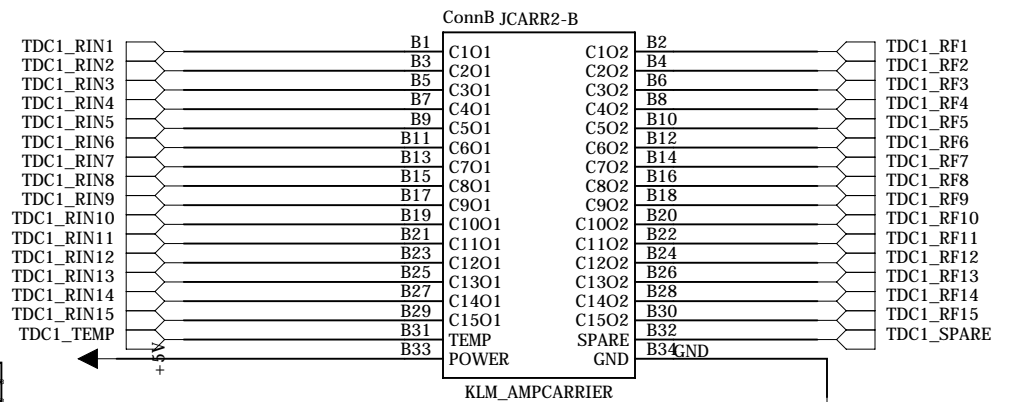
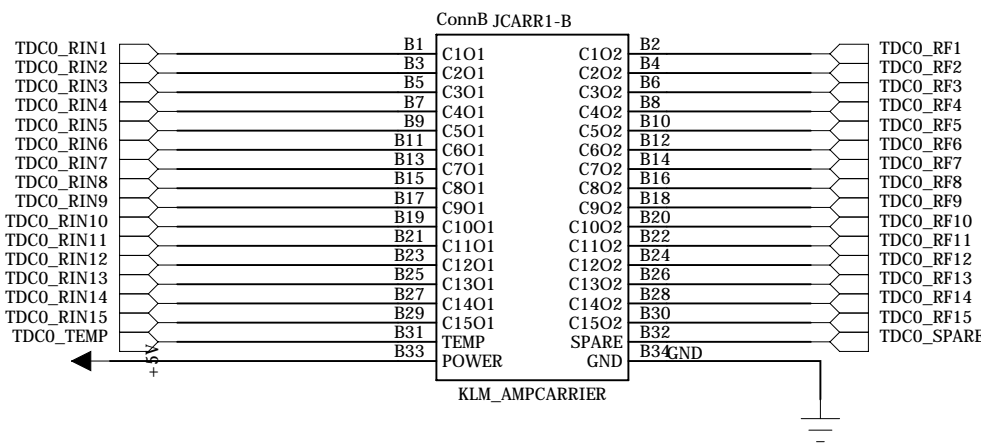
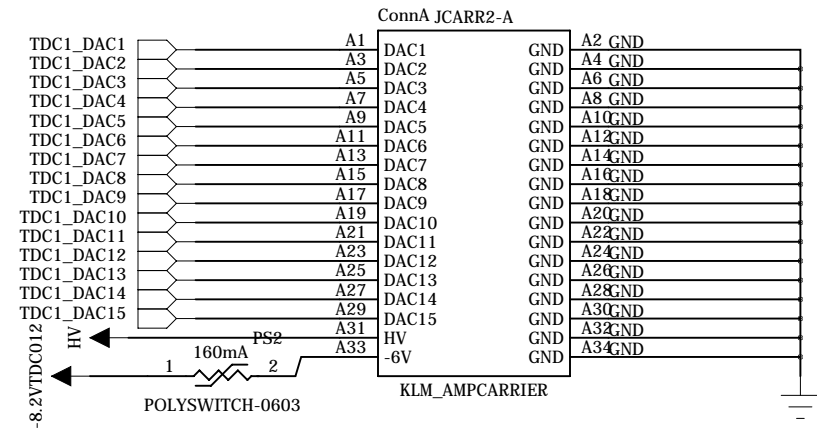
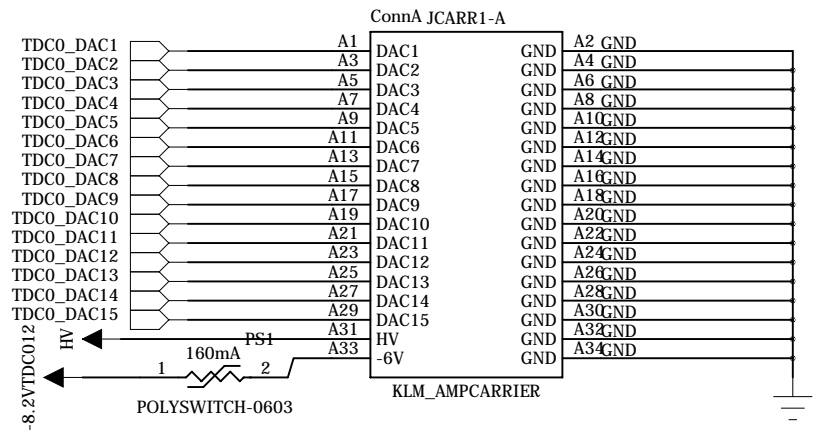
C

B

B

A

A



institution:	University of Hawaii at Manoa High Energy Physics Lab Instrumentation Development Lab
title:	MB_9U_KLM_Readout
revision:	A
IDLAB design #:	IDL_12_029
circuit design:	XS
PCB design:	XS
sheet #:	16 of 18
sheet description:	Right Angle Connectors
date last modified:	14 Sept. 2012

E

E

D

D

C

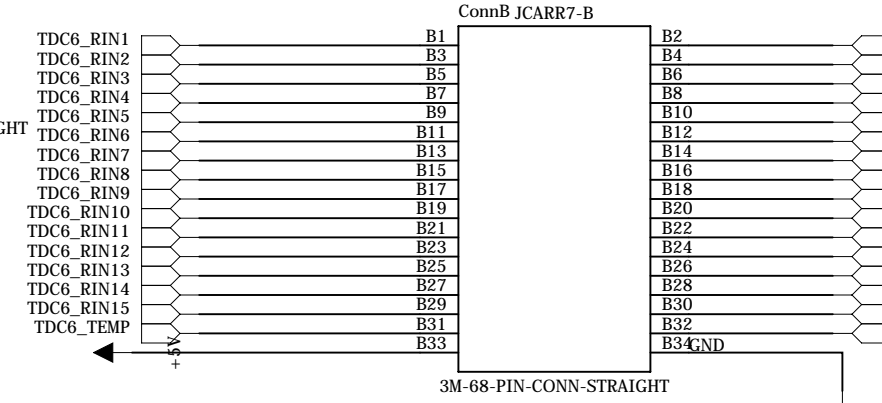
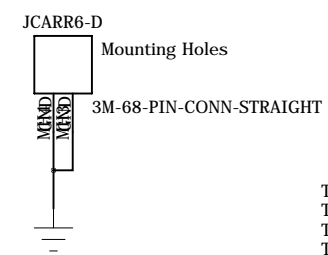
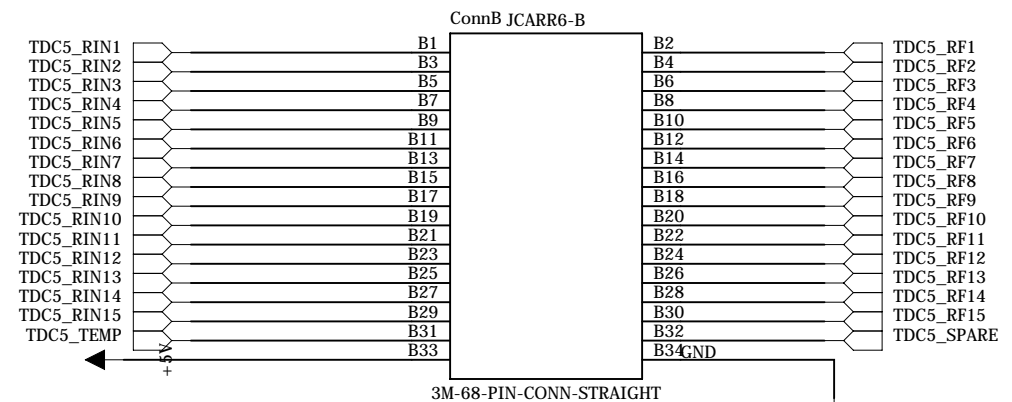
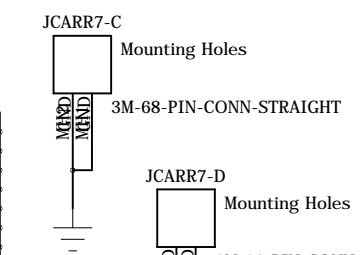
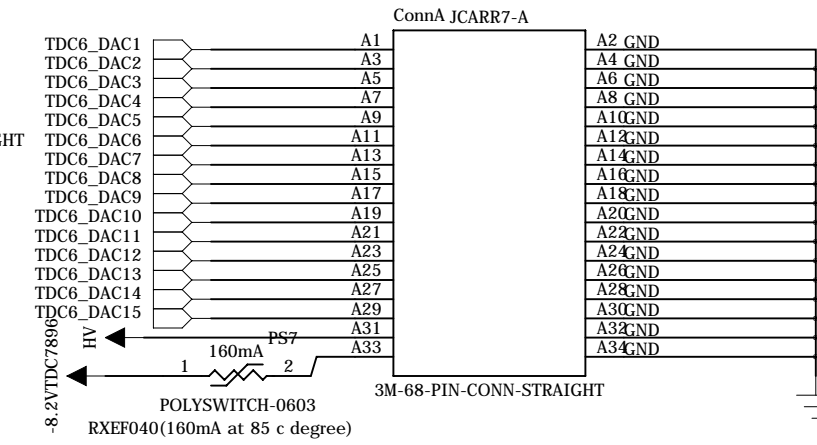
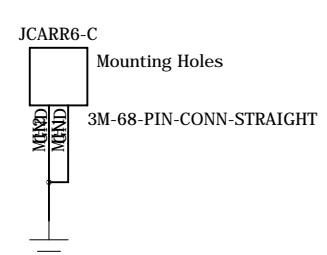
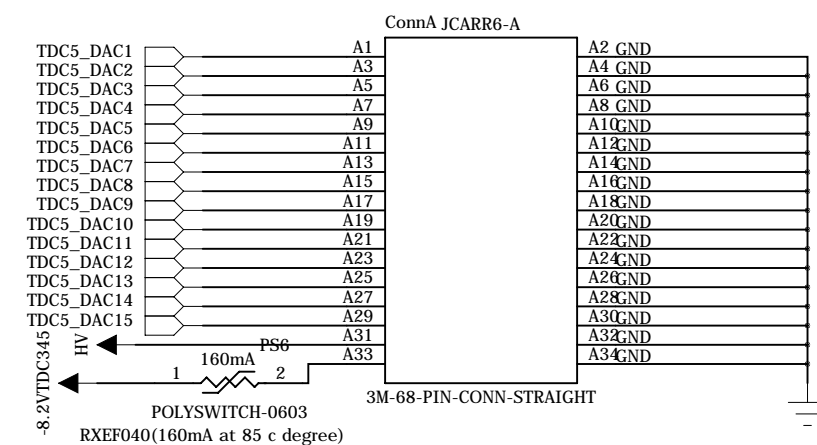
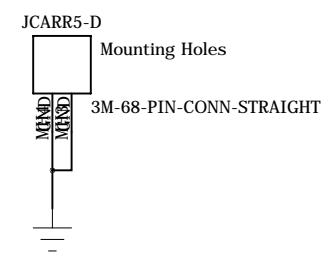
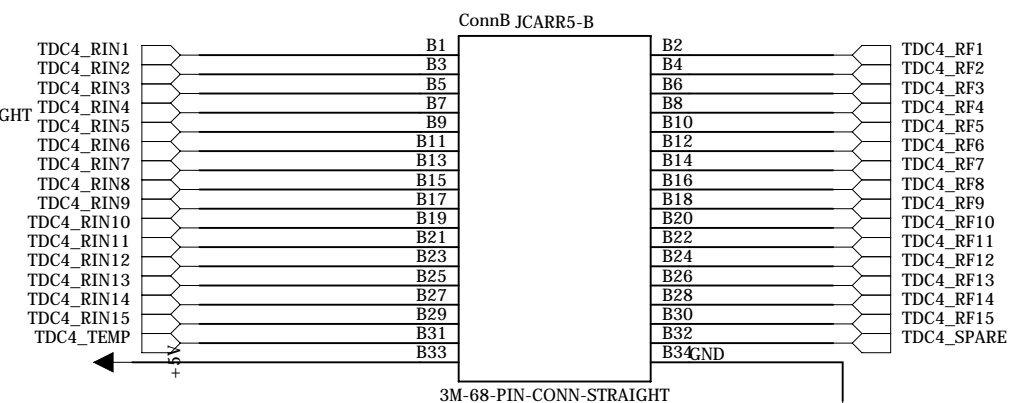
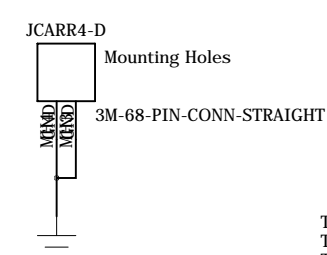
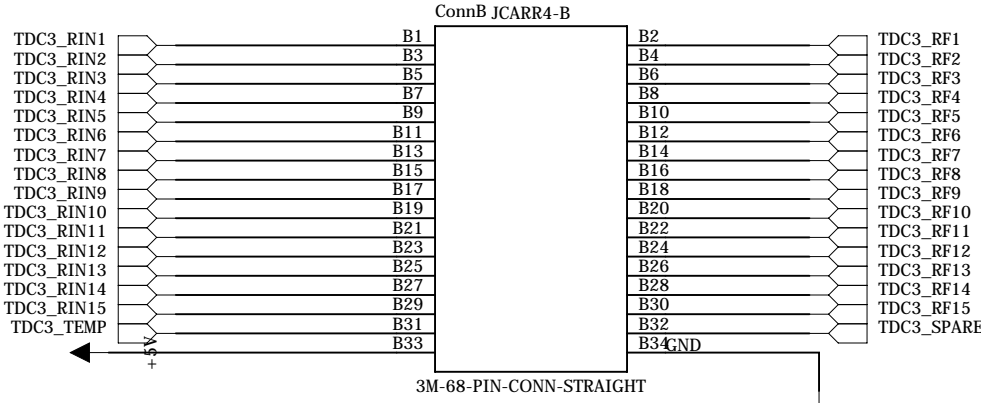
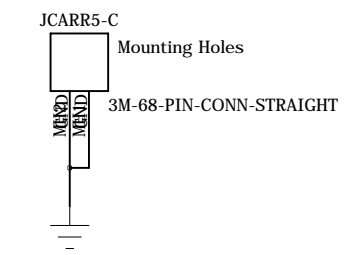
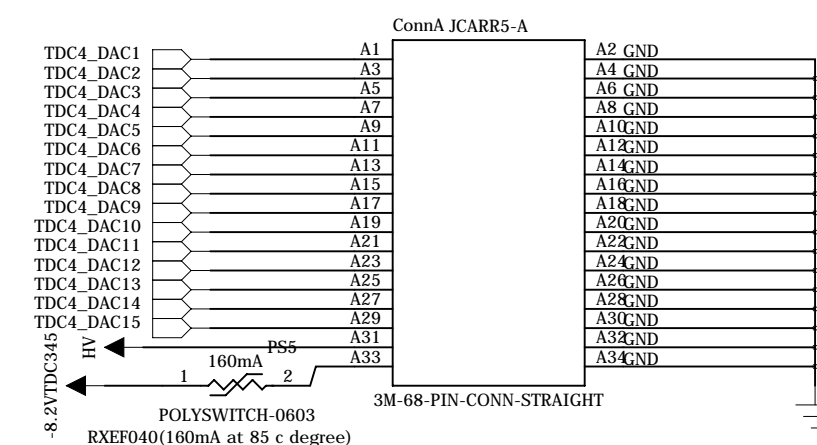
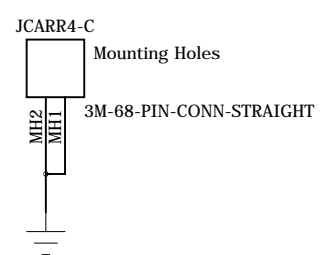
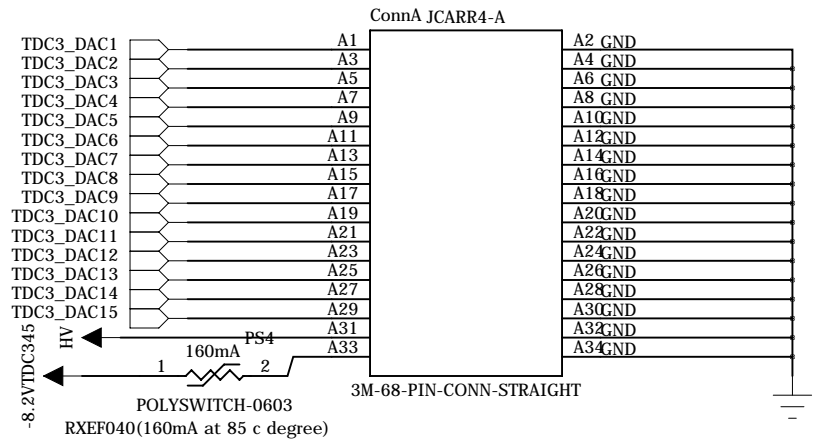
C

B

B

A

A



Institution: University of Hawaii at Manoa
High Energy Physics Lab
Instrumentation Development Lab

title: MB_9U_KLM_Readout
revision: A
IDL design #: IDL_12_029
circuit design: XS
PCB design: XS

6

5

4

3

2

1

E

E

D

D

C

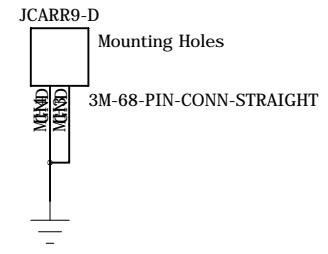
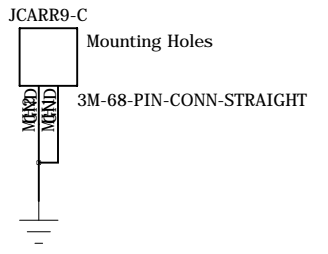
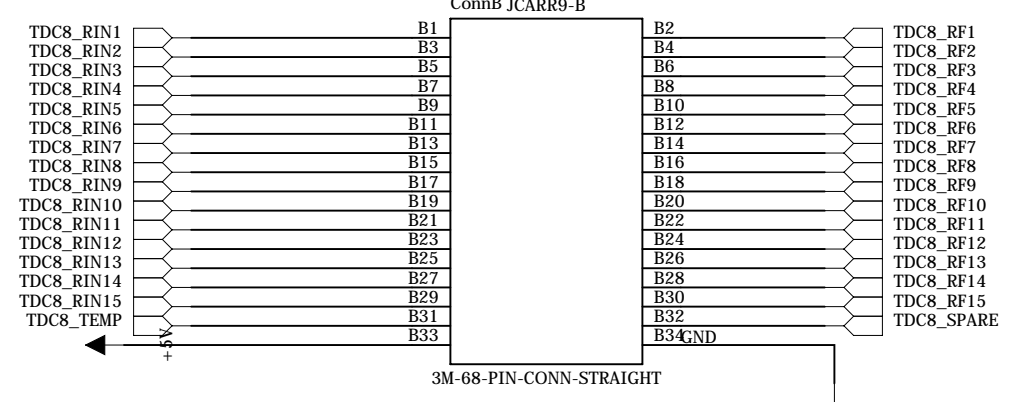
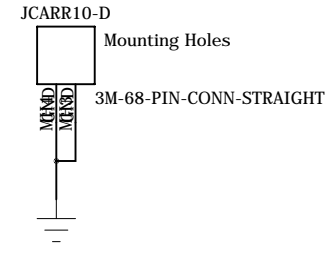
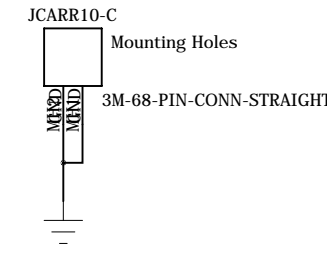
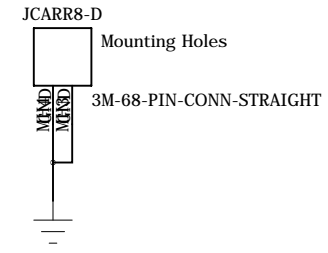
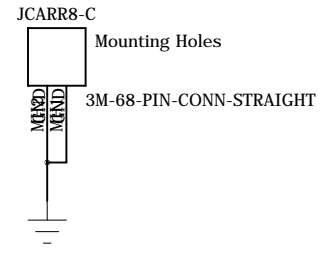
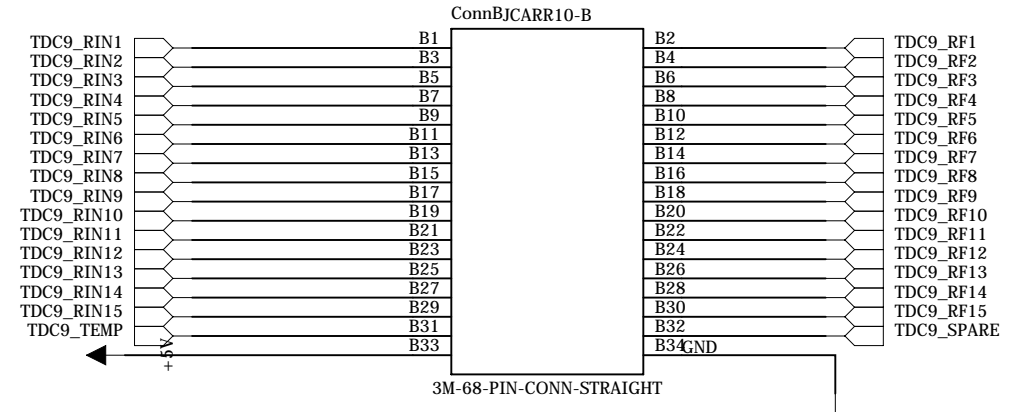
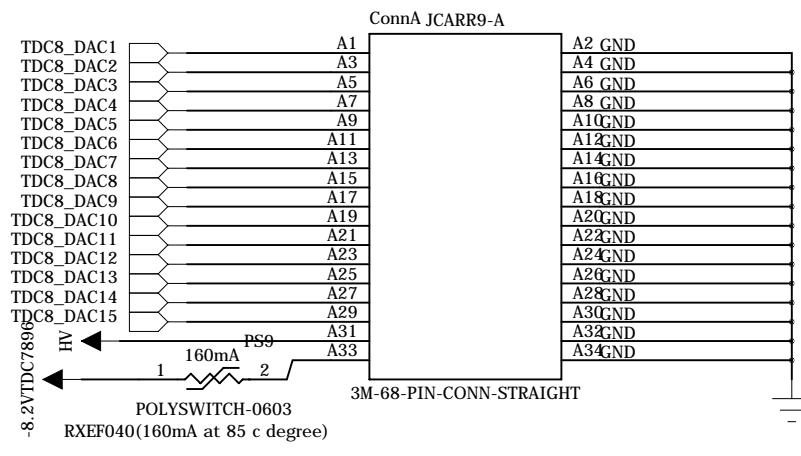
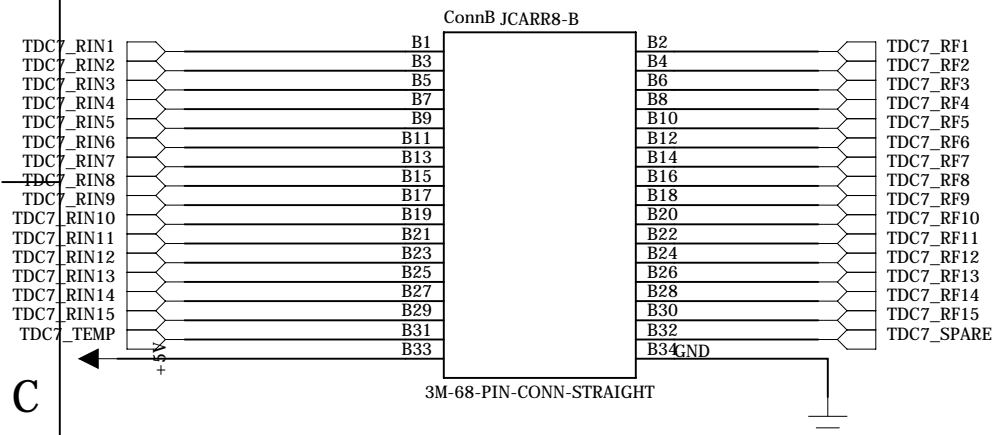
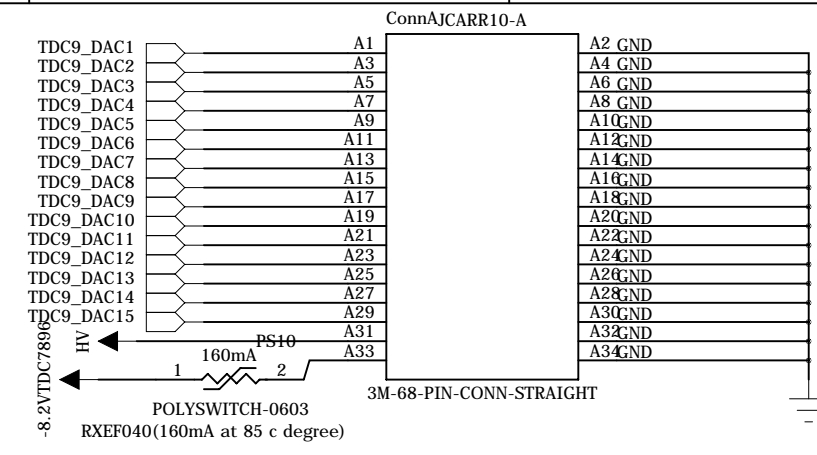
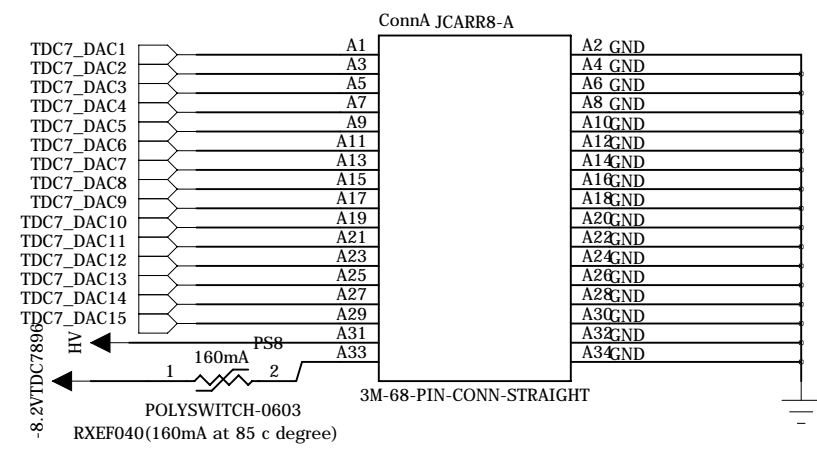
C

B

B

A

A



institution:	University of Hawaii at Manoa High Energy Physics Lab Instrumentation Development Lab
title:	MB_9U_KLM_Readout
revision:	A
IDLAB design #:	IDL_12_029
circuit design:	XS
PCB design:	XS
sheet #:	18 of 18
sheet description:	Straight Type Connectors Page 2
date last modified:	14 Sept. 2012