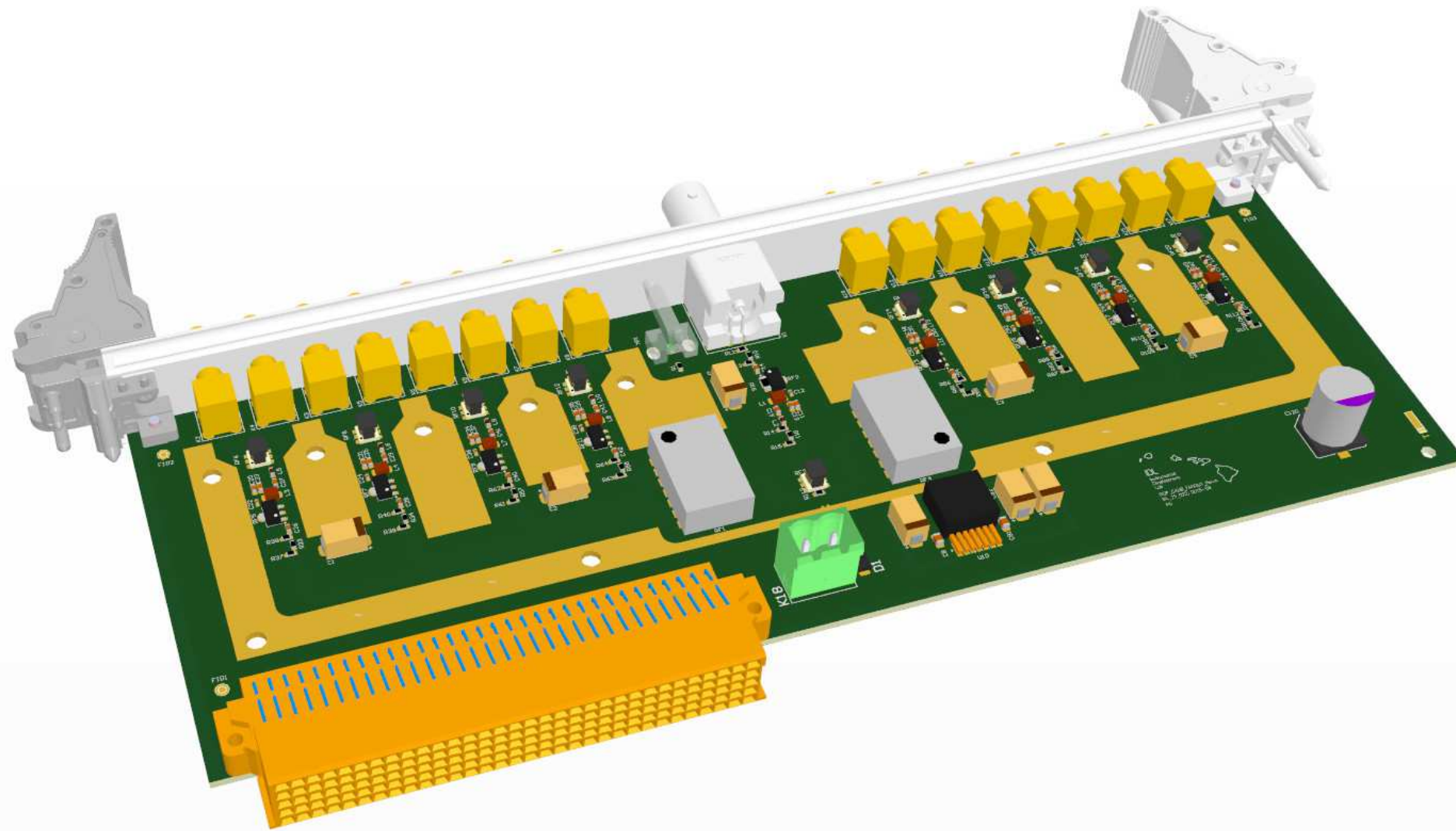




UNIVERSITY
of HAWAII®
MĀNOA

High Energy Physics Group
Instrumentation Development Laboratory
2505 Correa Road, Honolulu, HI 96822



Production Documentation for:

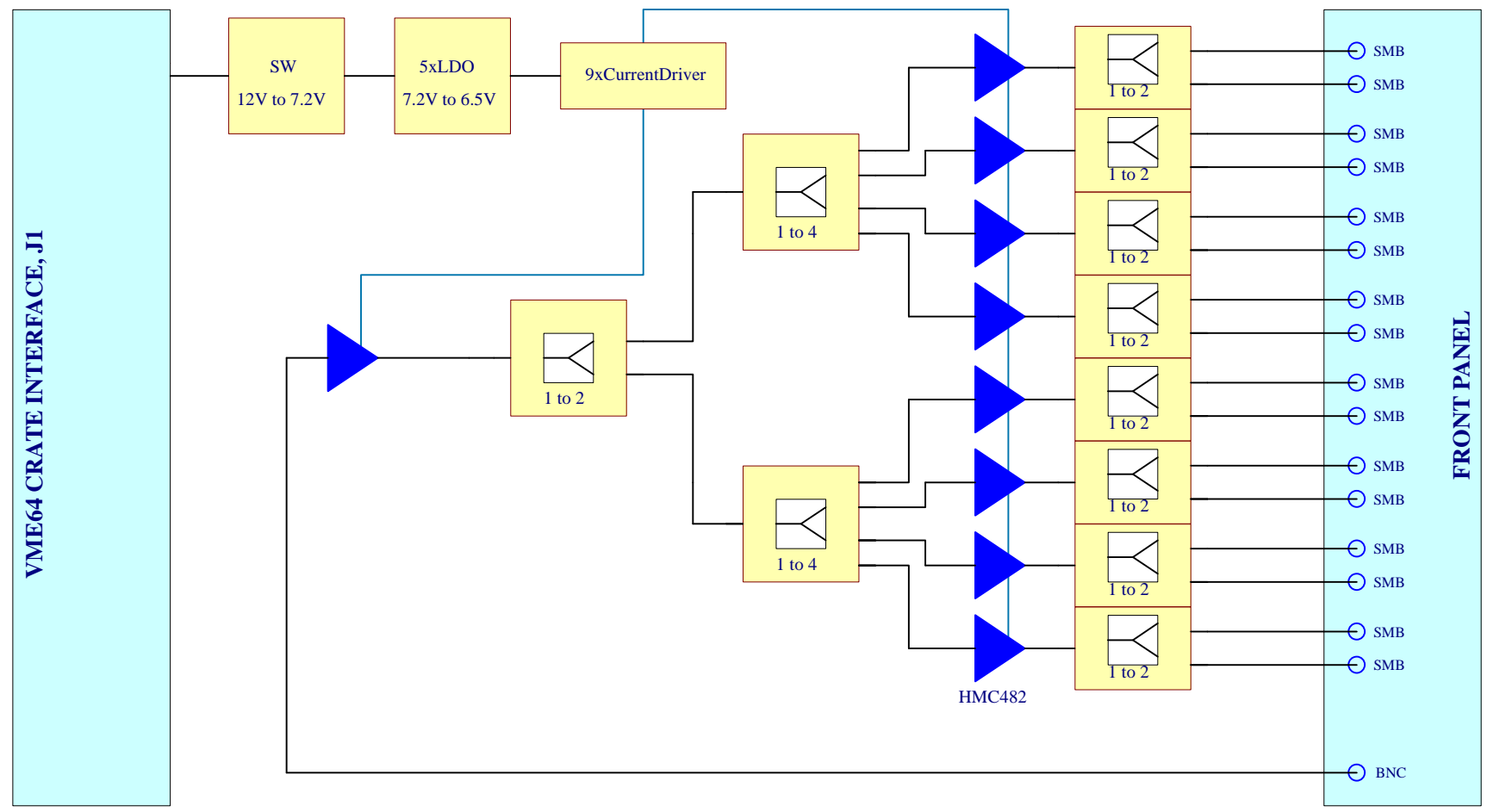
Project Name: ITOP
Board Name: ITOP_CALIB_FN1
IDL num: IDL_15_22
Revision: A
Variant: Master

Designer: Peter Orel
Drawn by: Peter Orel
Approved by: Gary S. Varner

High Energy Physics Group, Instrumentation Development Lab	Designer: Peter Orel	IDLAB design #: IDL_15_22
Project name: ITOP	Drawn By: Peter Orel	Revision: A
Board name: ITOP_CALIB_FN1	Approved By: Gary S. Varner	Variant: Master
	Modif. Date: 1. okt 2015	
	Sheet 1 of 4	



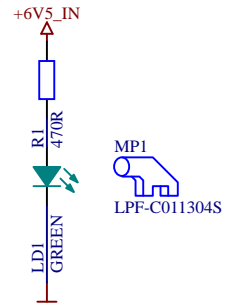
UNIVERSITY
of HAWAII®
MĀNOA



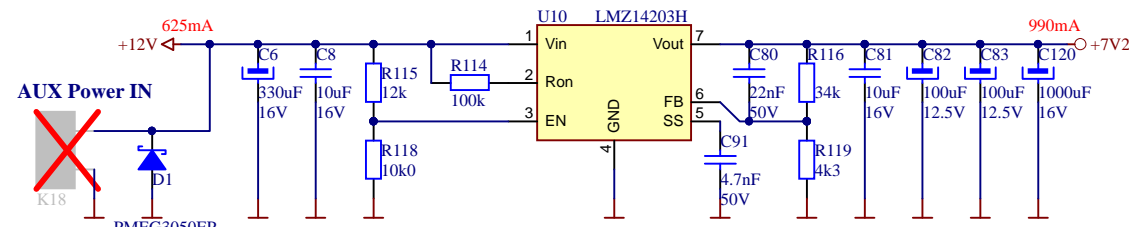
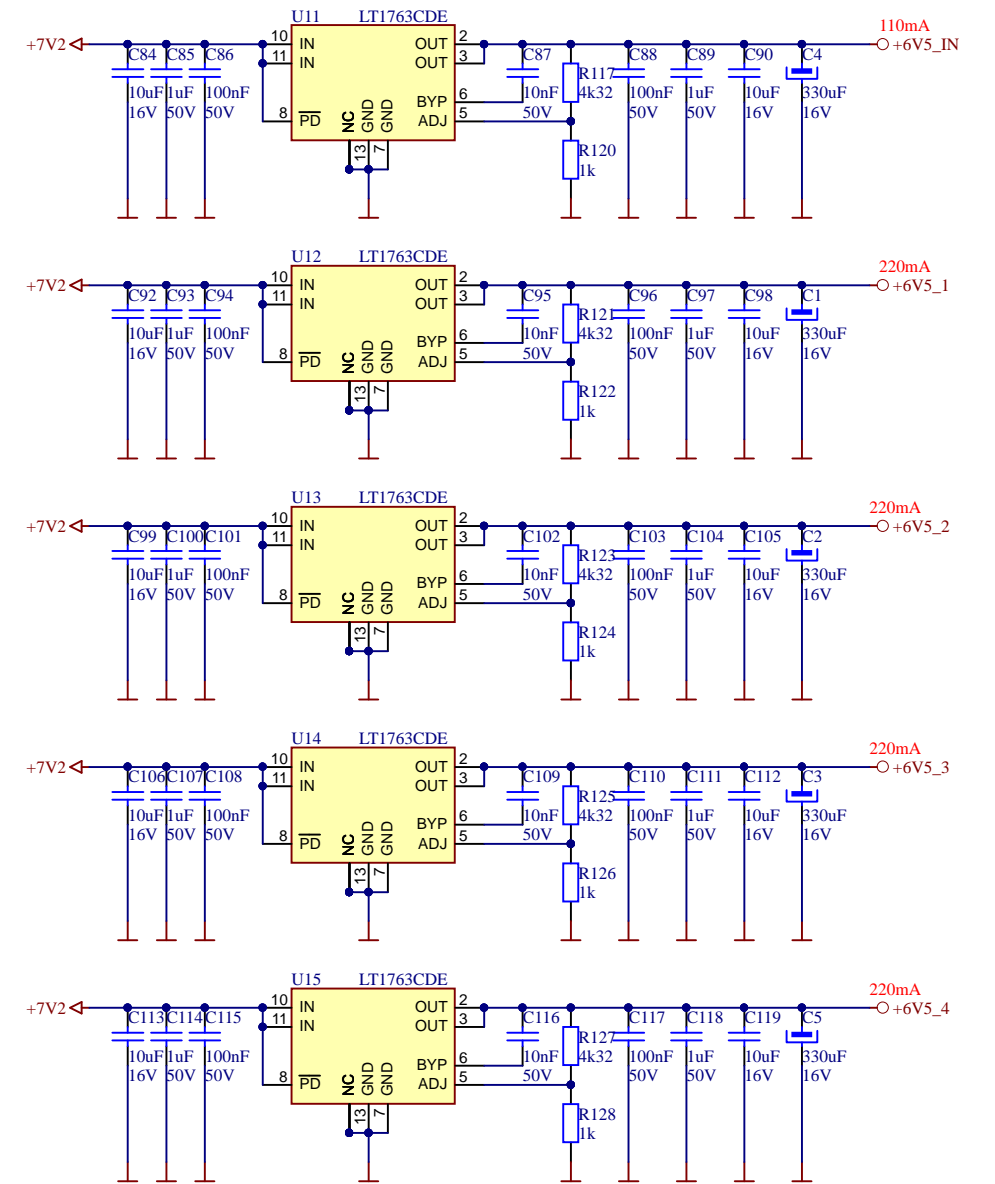
High Energy Physics Group, Instrumentation Development Lab	Designer: Peter Orel	IDLAB design #: IDL_15_22
Board: ITOP_CALIB_FN1	Drawn By: Peter Orel	Revision: A
Sheet Title: Functional Block Schematic	Approved By: Gary S. Varner	Variant: Master
	Modif. Date: 1. okt 2015	
	Sheet 2 of 4	



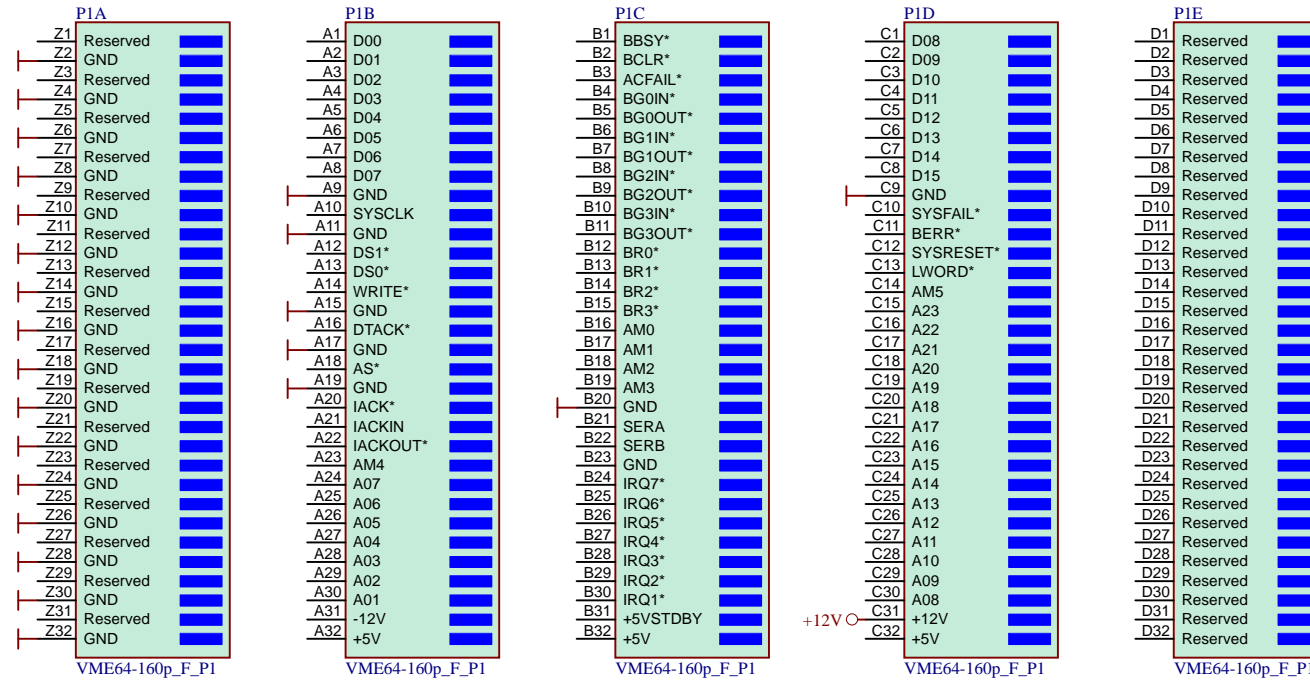
Power ON LED



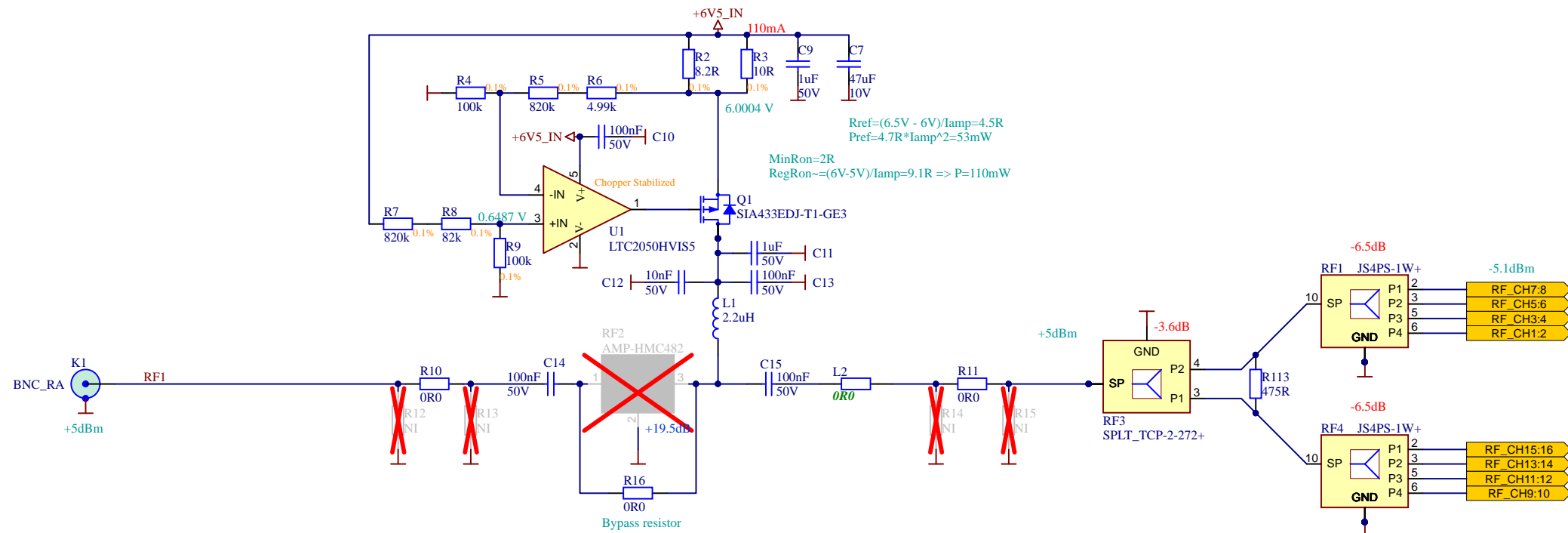
Amplifier Power Supply

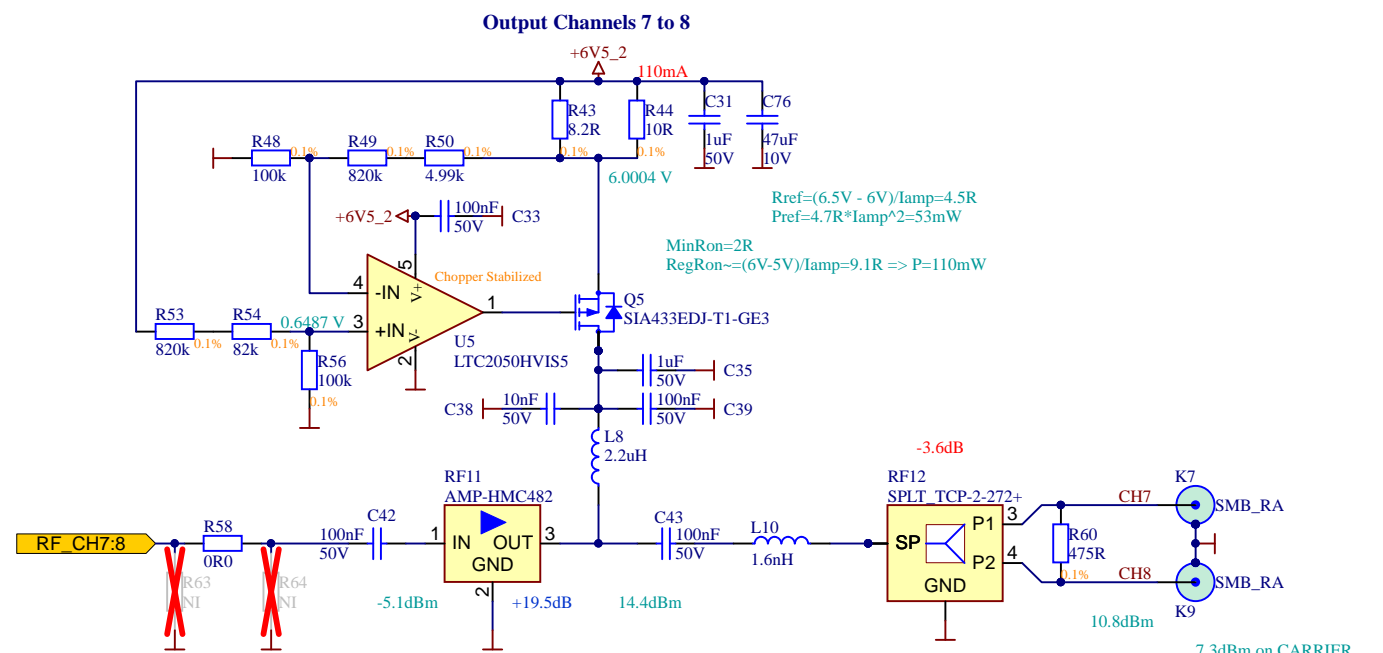
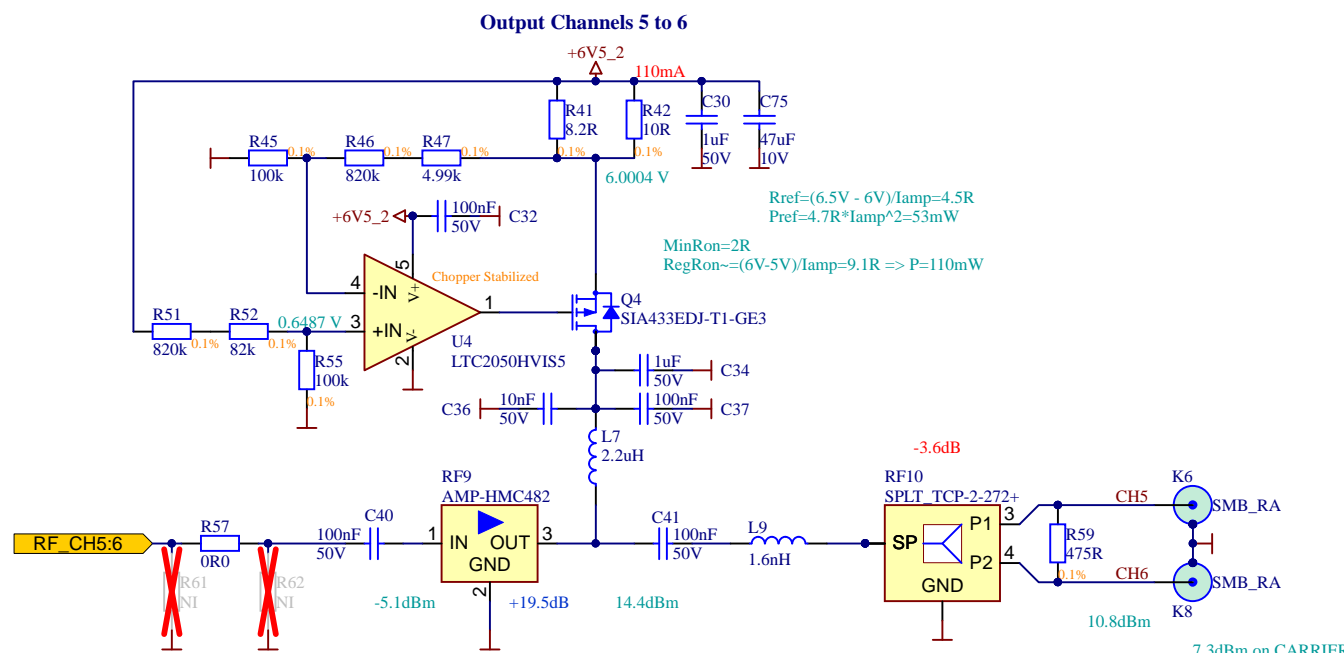
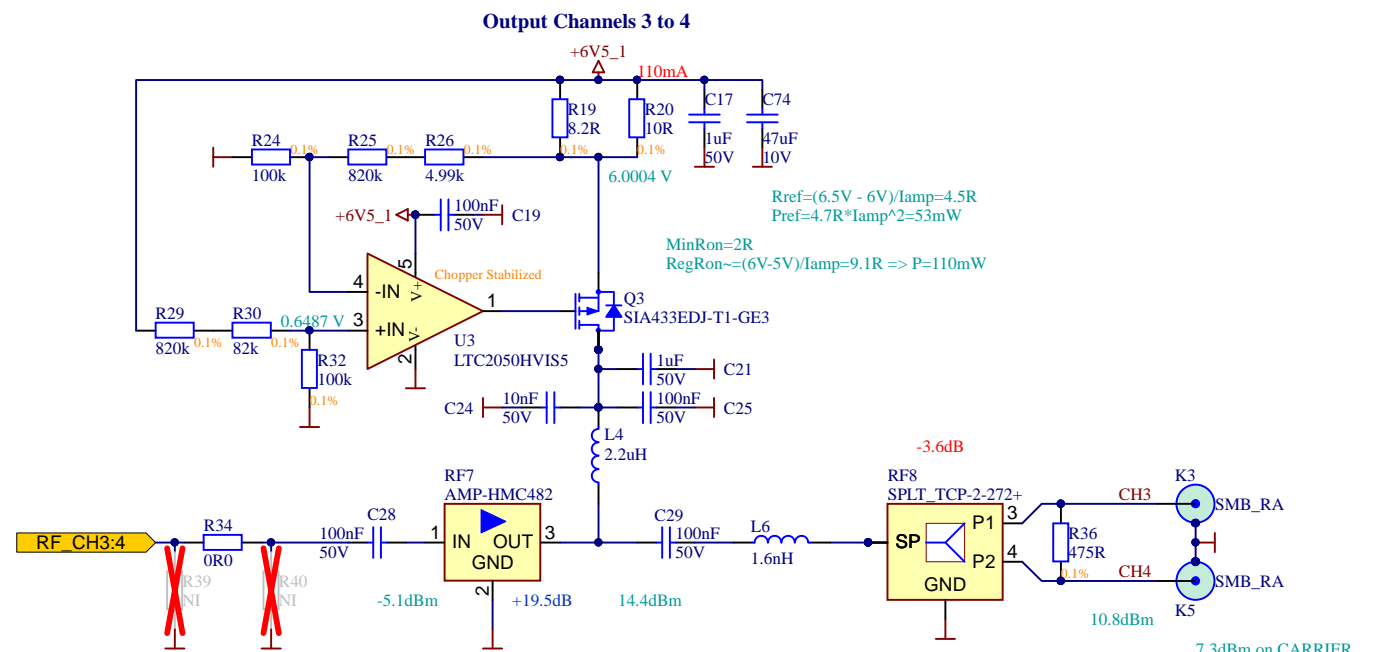
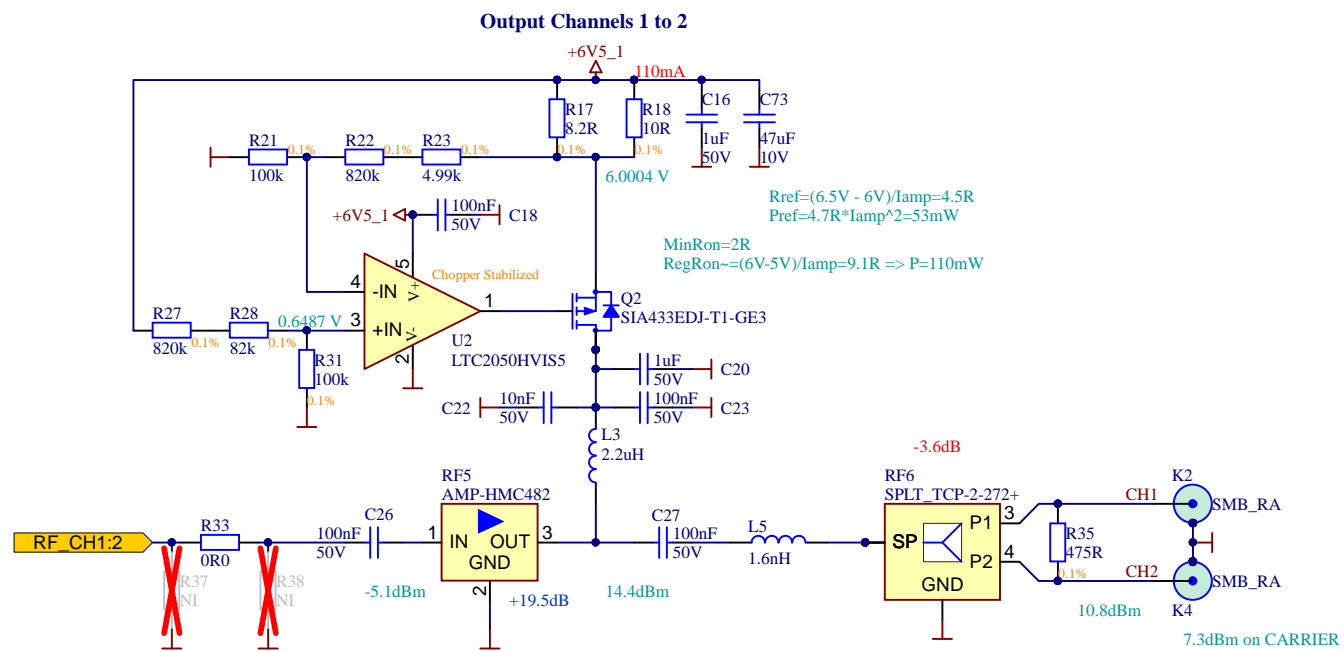


VME64, J1 Connector to Crate



Input RF Chain





PCB_IDL_15_XX
PCB

FID1 FID2
PCB-FIDRTB PCB-FIDRTB

FID3
PCB-FIDRTB

