

A

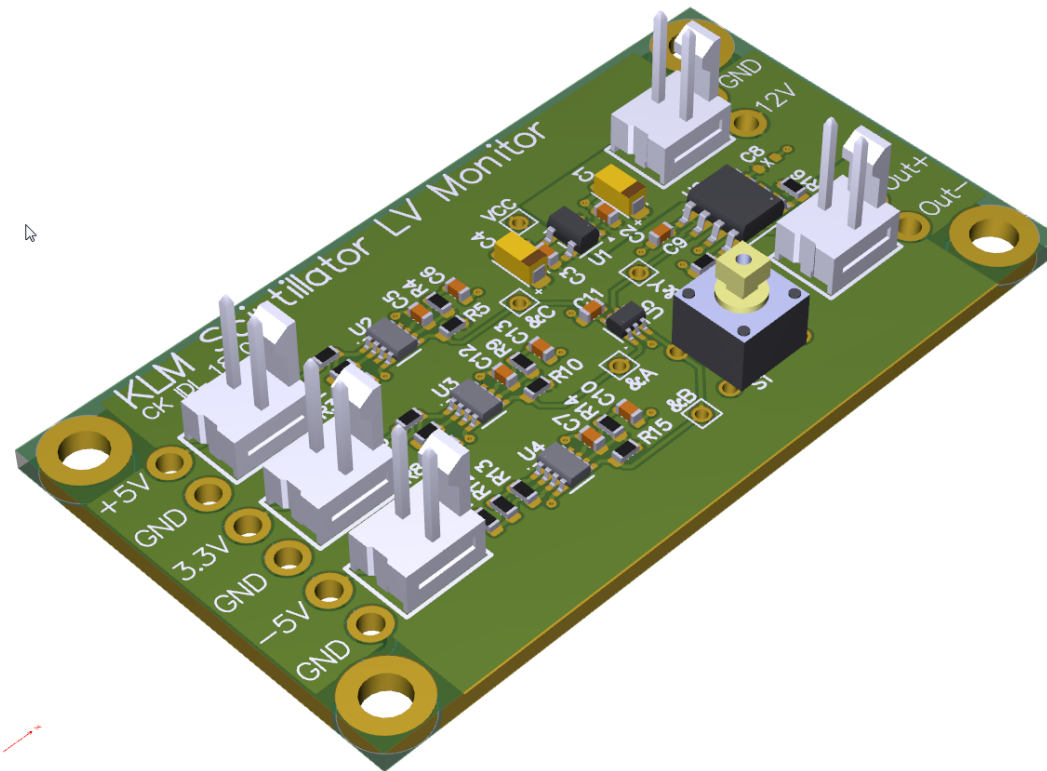
B

C

D

KLM Scintillator LV Monitor, rev A

IDL_18_016
25 April 2018



A

B

C

D

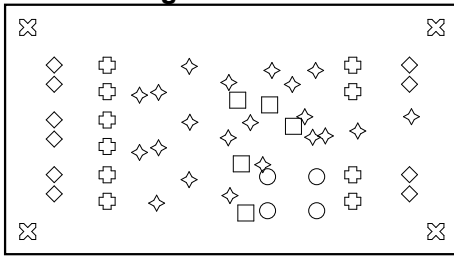
A

B

C

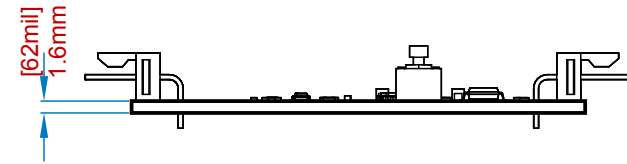
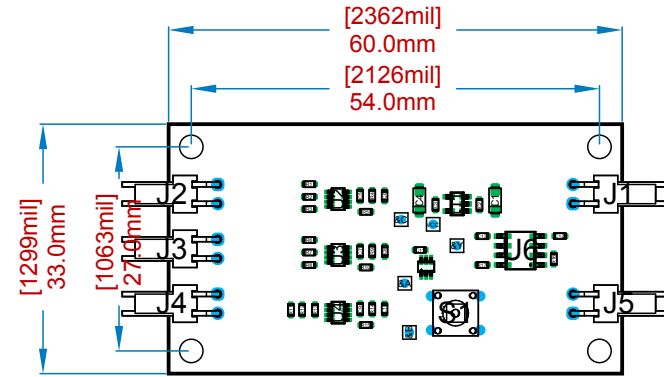
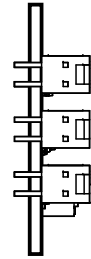
D

Drill Drawing View



Drill Table

Symbol	Count	Hole Size	Plated	Hole Tolerance
□	5	0.89mm(35mil)	Plated	None
○	4	1.00mm(39mil)	Plated	None
◇	10	1.02mm(40mil)	Plated	None
⊗	4	3.30mm(130mil)	Plated	None
⊕	10	1.75mm(69mil)	Plated	None
◇	21	0.30mm(12mil)	Plated	None



Layer Stack Legend

Material	Layer	Thickness	Dielectric Material	Type	Gerber
	Top Paste			Paste Mask	GTP
	Top Overlay			Legend	GTO
	Surface Material			Solder Resist	GTS
Copper	Top Layer	0.03mm(1.4mil)		Signal	GTL
Core		1.50mm(59.0mil)	FR-4	Dielectric	
Copper	Bottom Layer	0.03mm(1.4mil)		Signal	GBL
	Surface Material			Solder Resist	GBS
	Bottom Overlay			Legend	GBO
	Bottom Paste			Paste Mask	GBP
Total thickness: 1.59mm(62.5mil)					

A

B

C

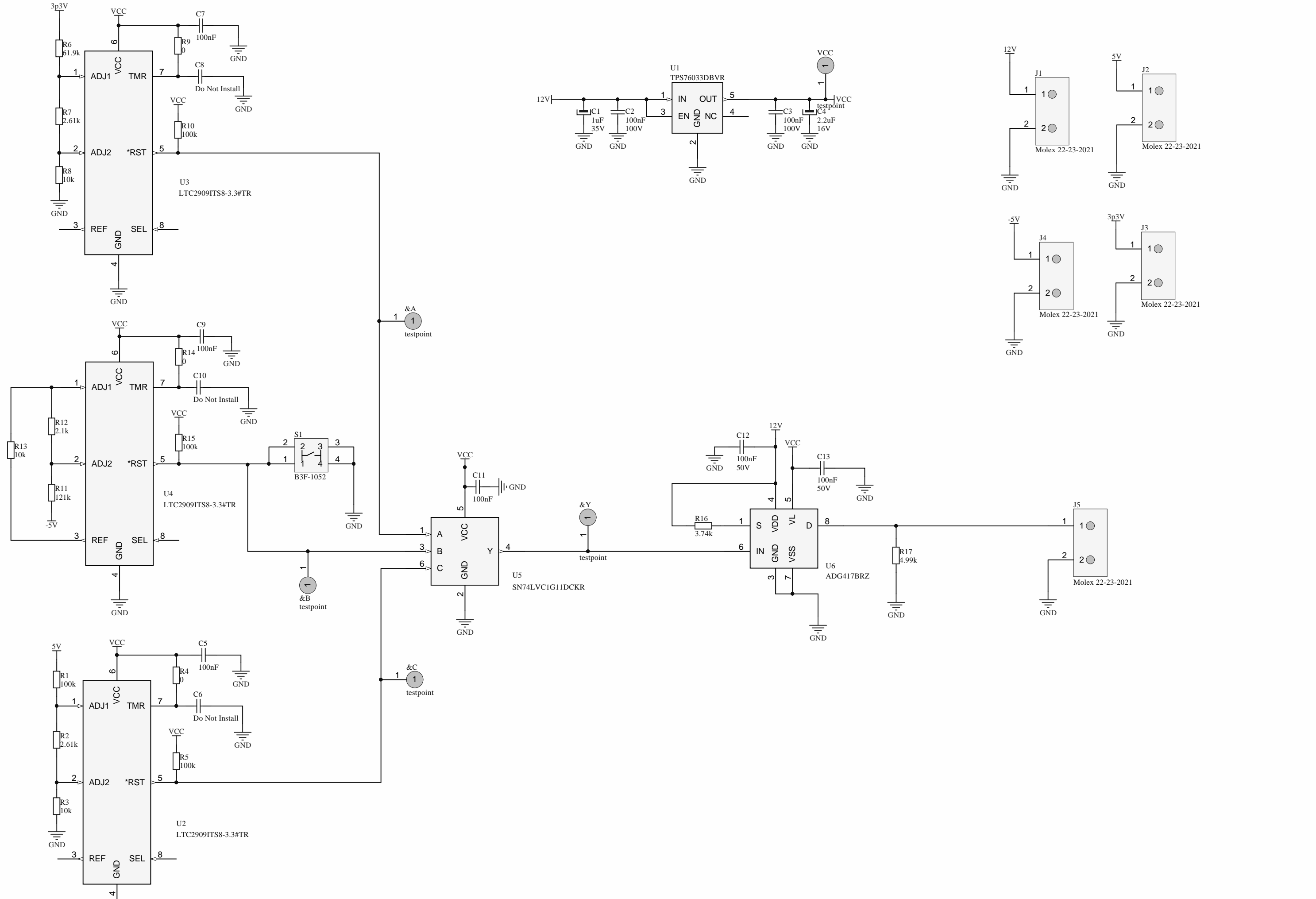
D

1

1

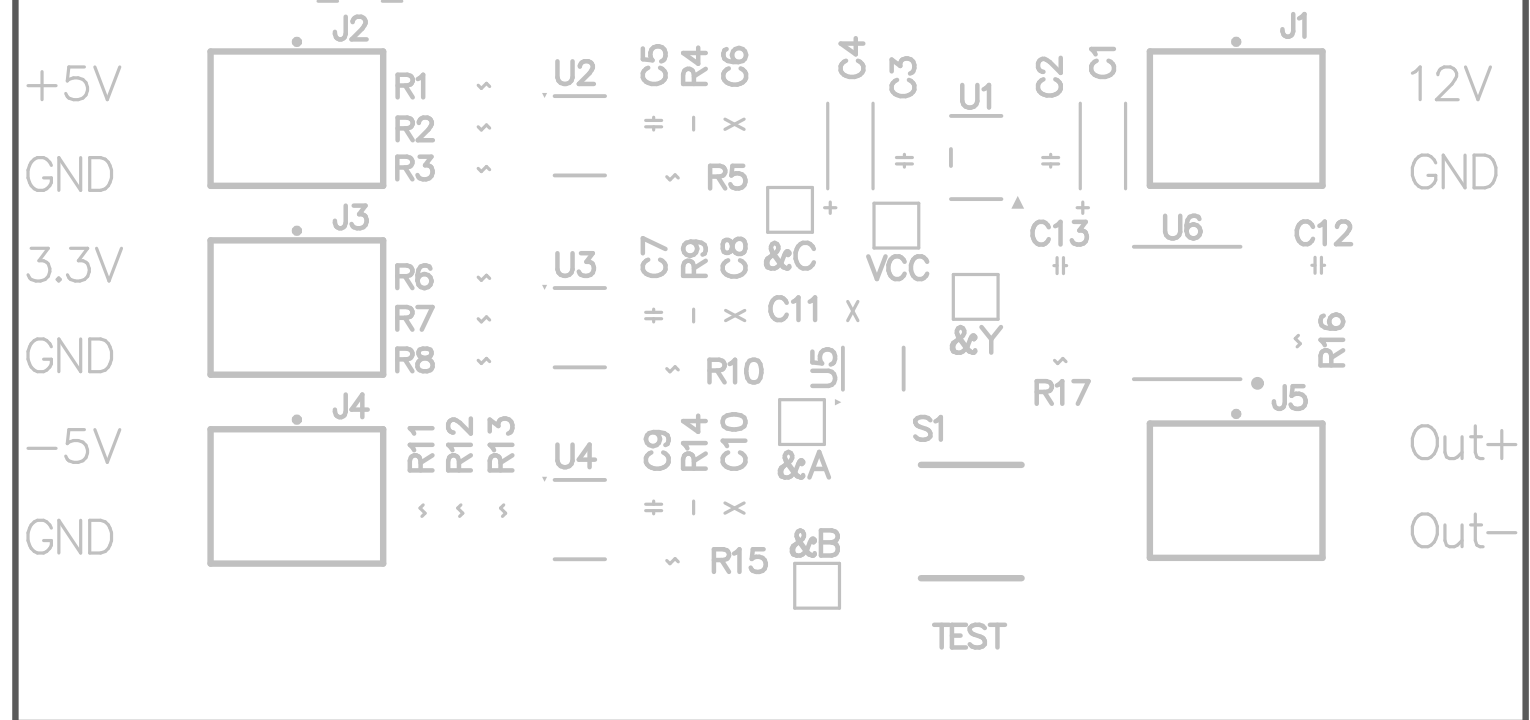
2

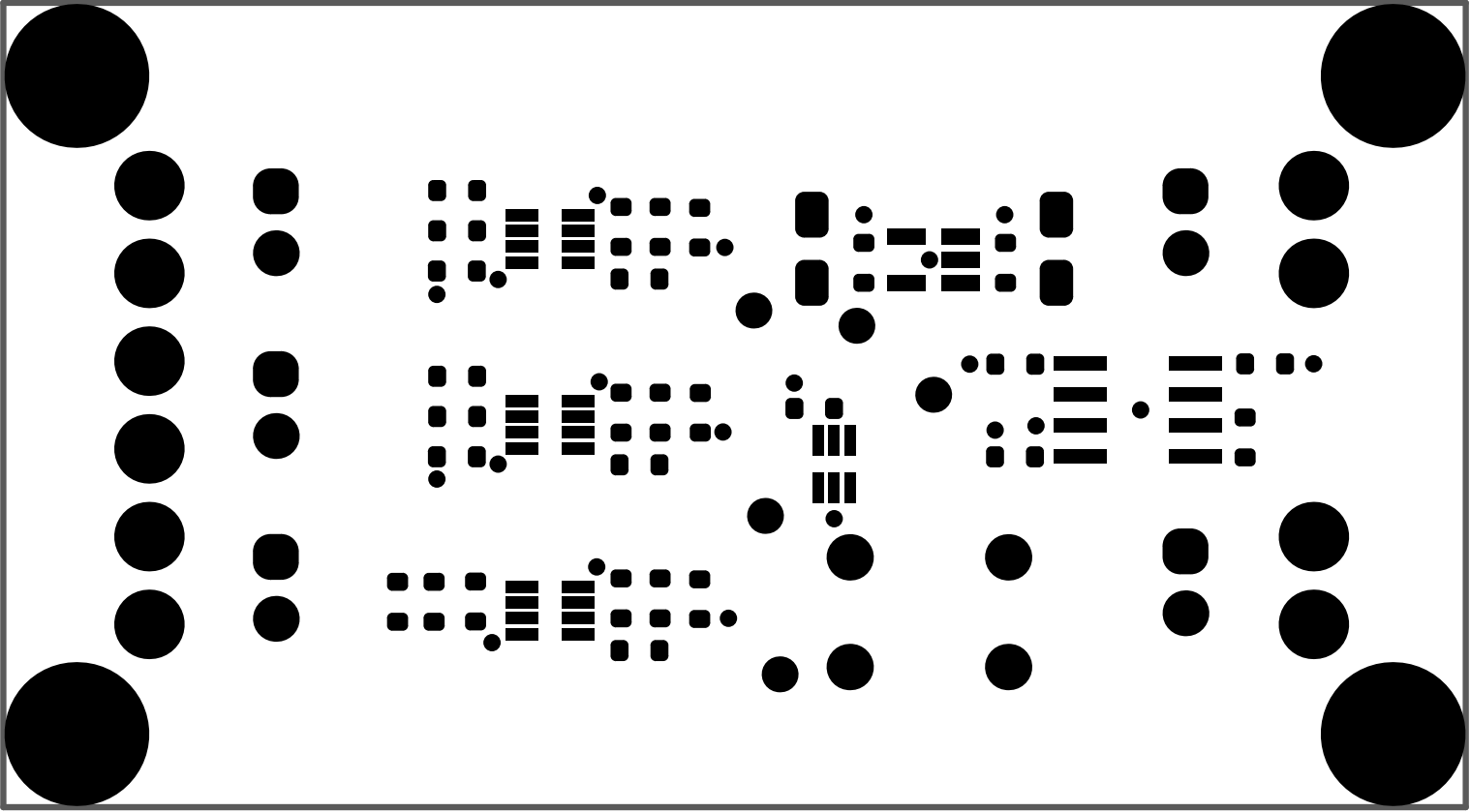
2

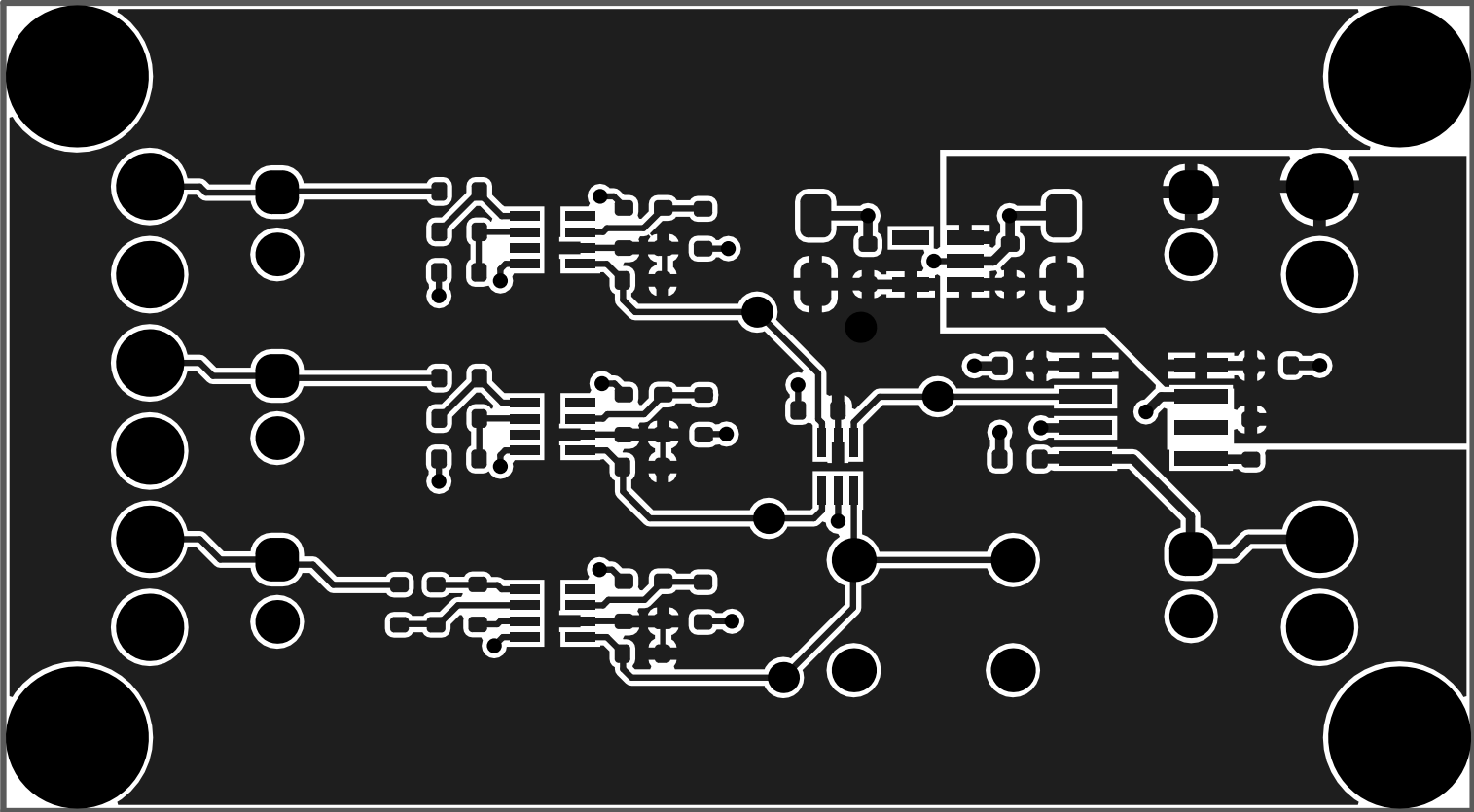


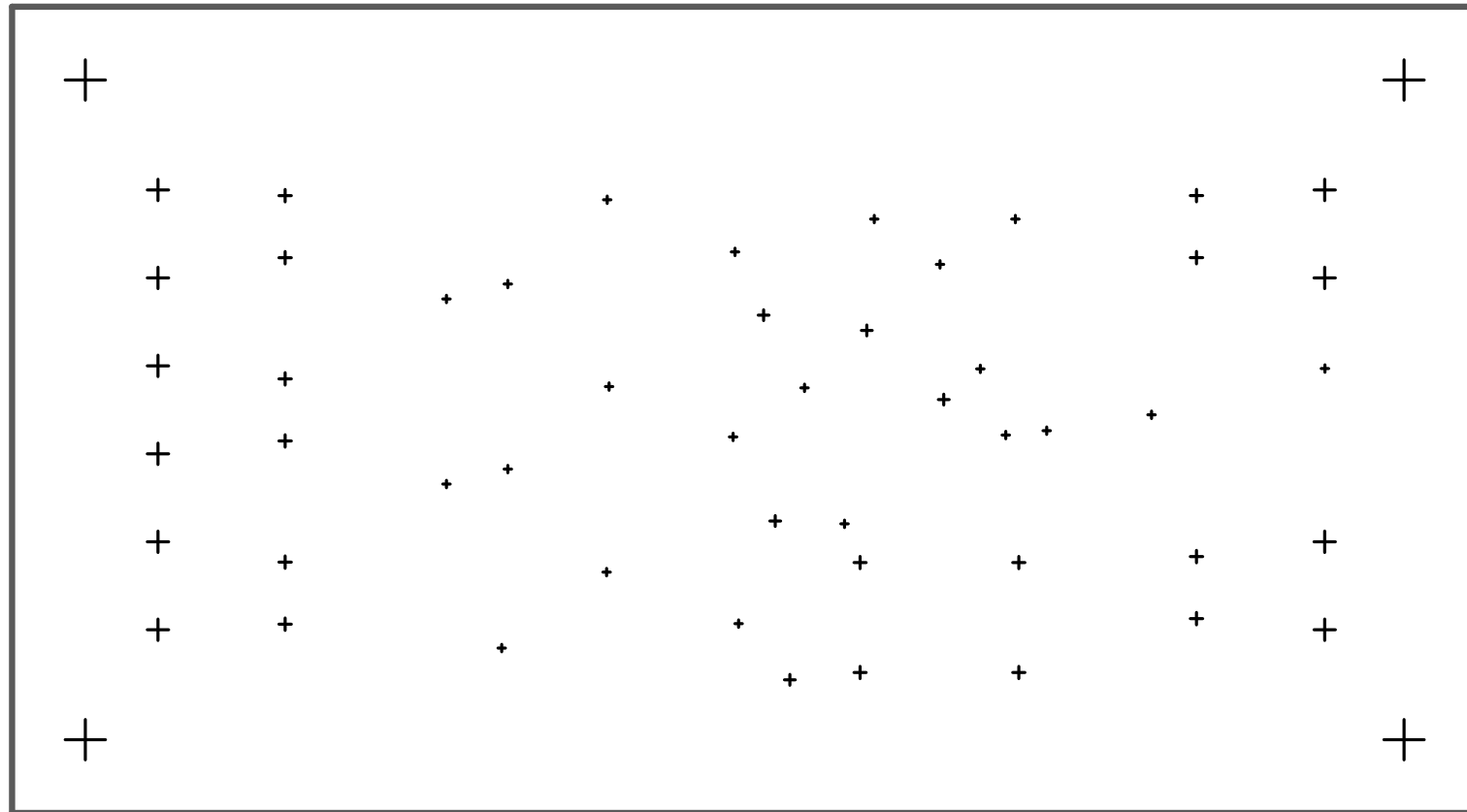
KLM Scintillator LV Monitor

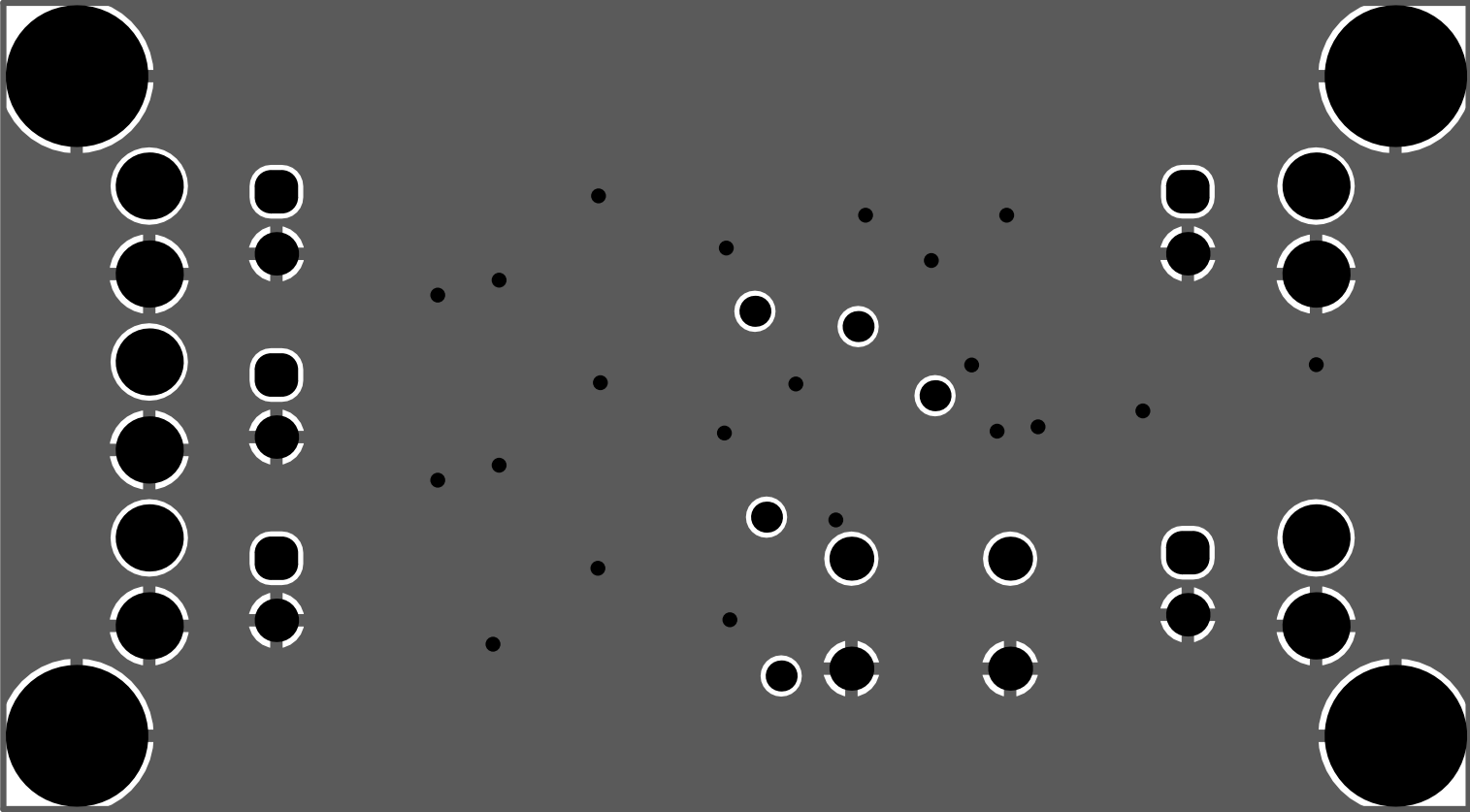
CK IDL_18_016

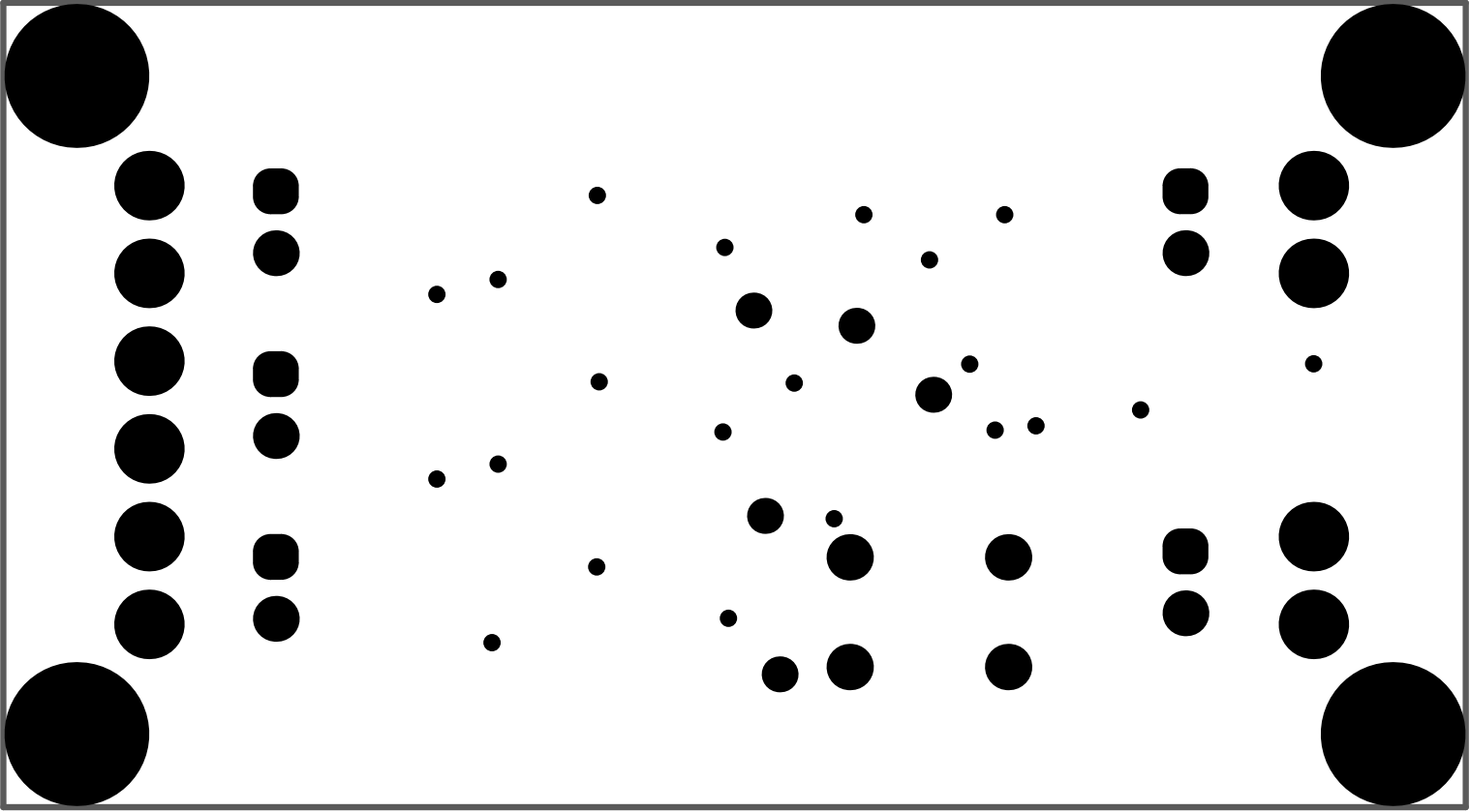












LTC2309 opt RST timeout:

REMOVE R4, R9, R14
INSTALL C6, C8, C10
C=.110*F [mf\ms]



Lab
Development
Instrumental
IDL

CK Apr. '18
IDL_18_01d revA
KLM Scint. LV Mon.

