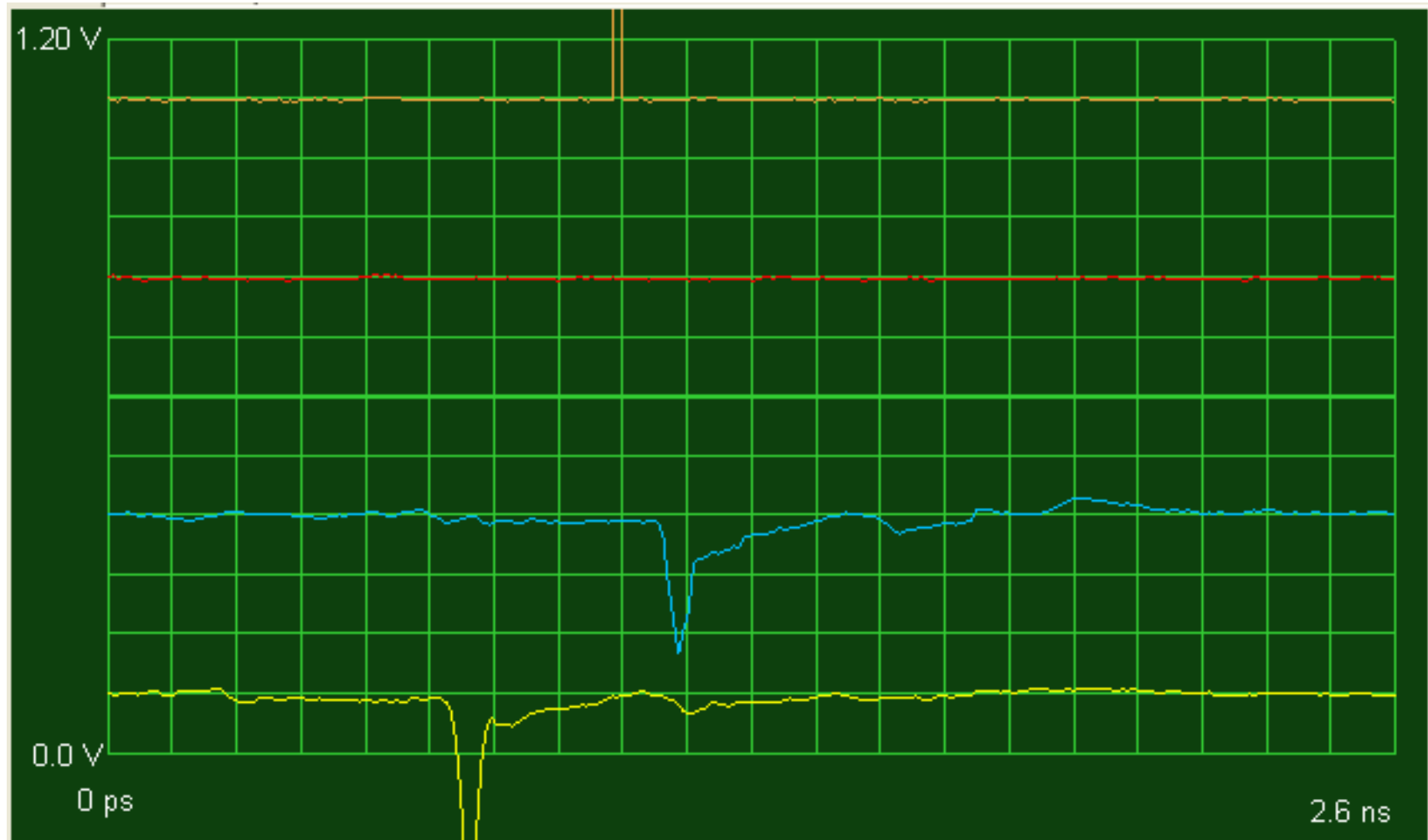
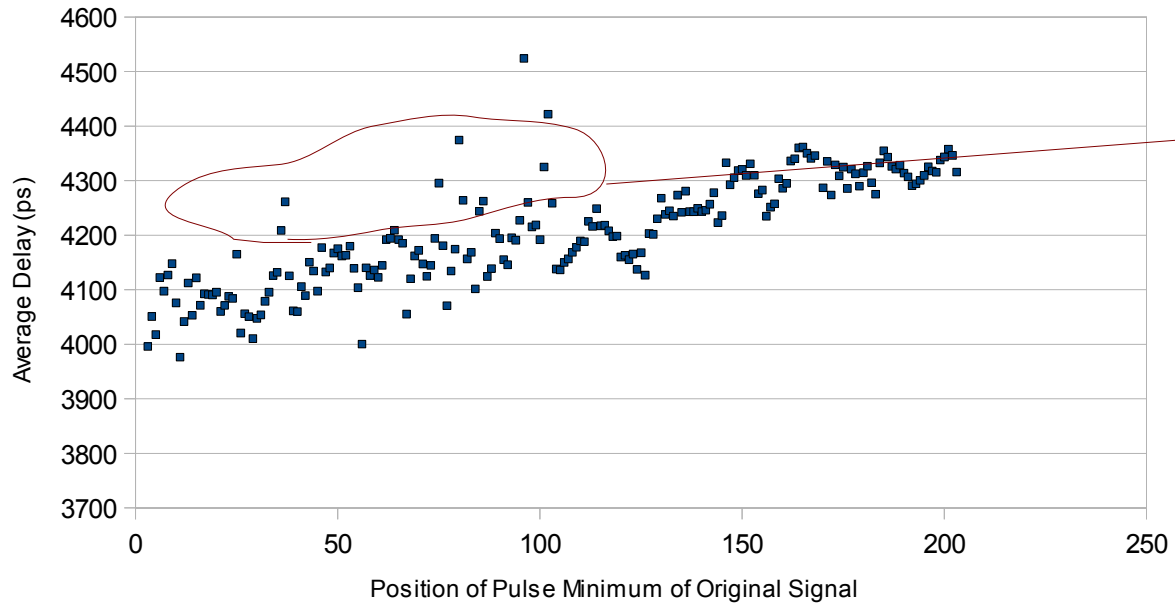


The signal from the pulser was split and a delay of 4ns was added between the signals on CH4 and CH3



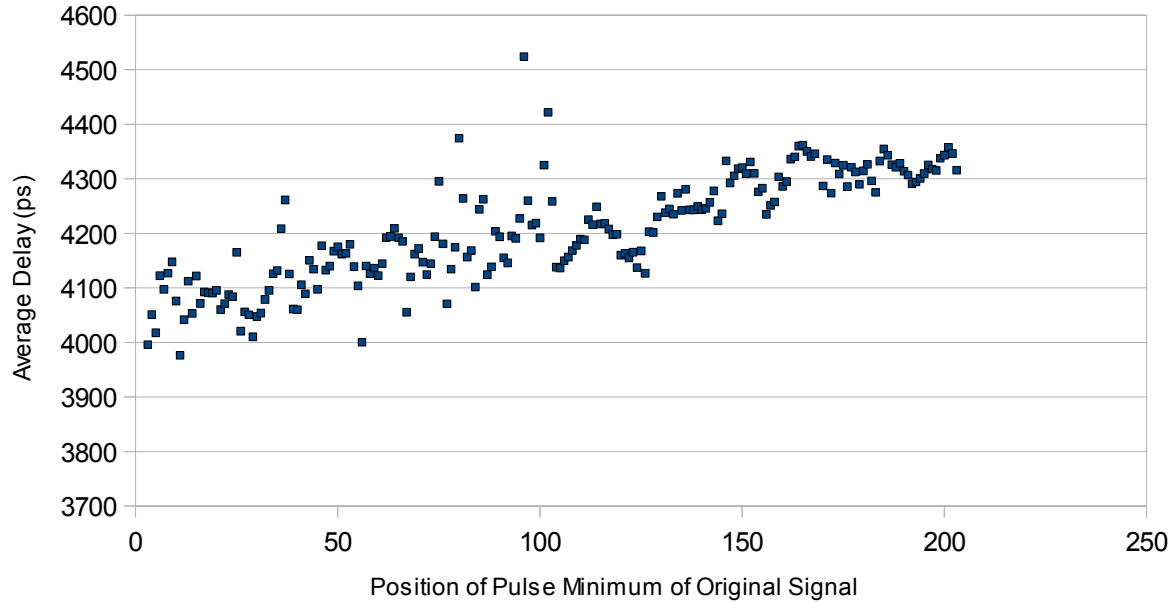
Sample Event

Average Delay vs Cell #

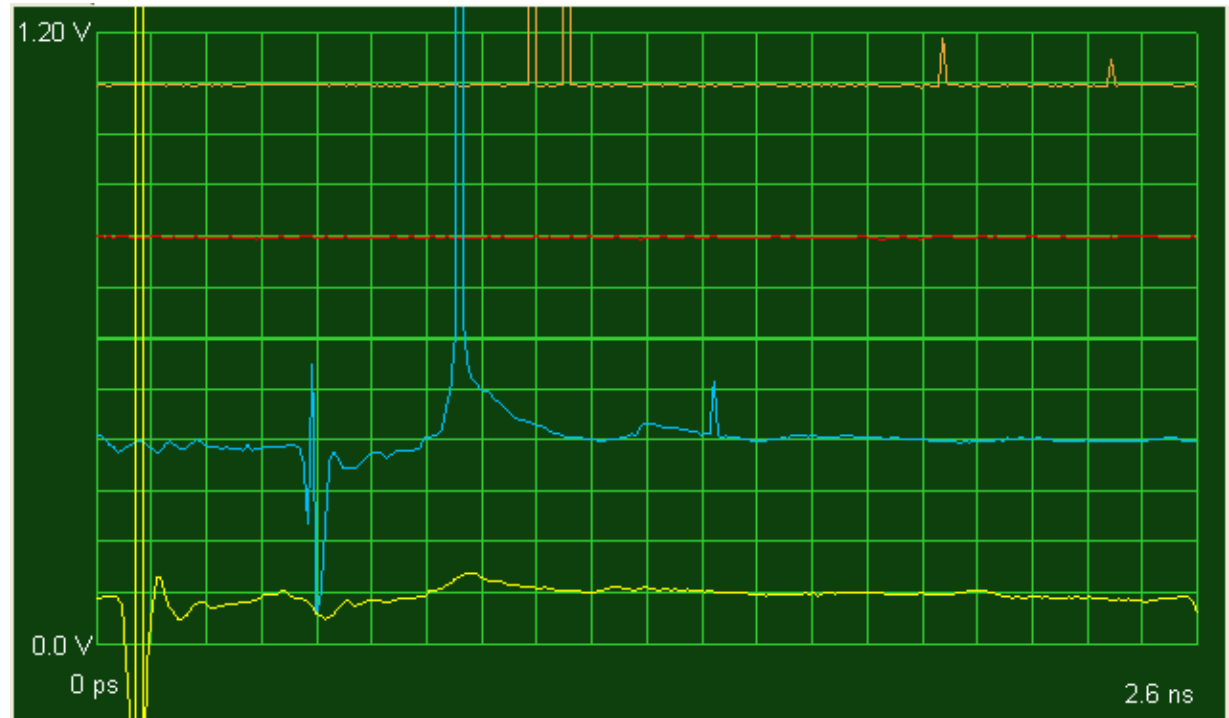


These events were caused by the wrapping issues shown by the 1<sup>st</sup> example event on the next slide.

Average Delay vs Cell #



1. Wrapping issue that causes constant fraction delay calculation to fail. Responsible for a lot of the outliers on the delay vs cell # graphs.



2. A different problem caused by wrapping; event's such as these have been filtered out of the data and are not included on the plots on the previous slide.

