

HMB v3

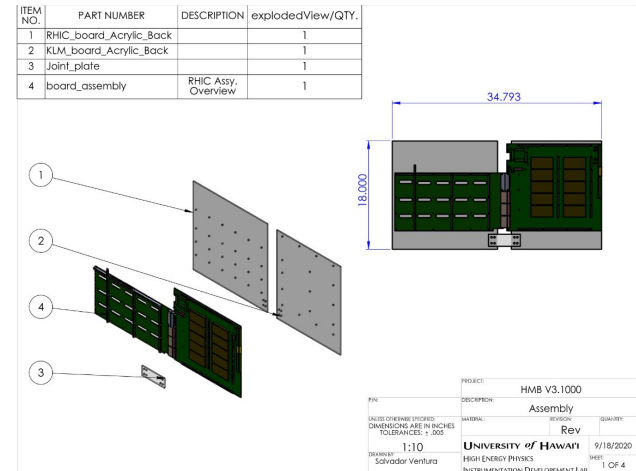
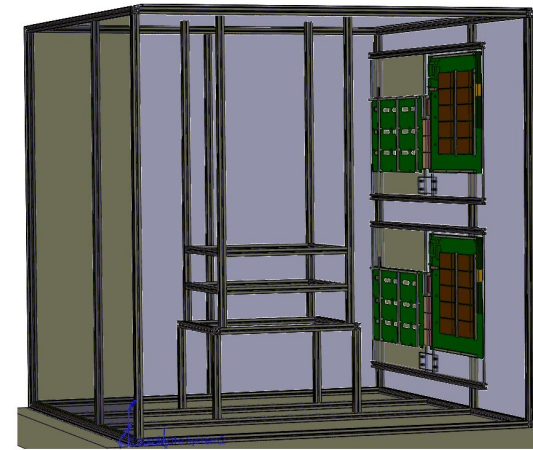
Mechanical design

Salvador Ventura, Chris Ketter, Shivang Tripathi,
Richard Peschke

09-21-2020

Board Support drawings

- Progress
 - Drawings for boards support finished and delivered to Roy
 - Roy will quote the acrylic and start the fabrication this week.
- Plans
 - Upload a second version for the drawings
 - Cut musumi bars for support
 - Verify fabrication and start assembly
 - Coordinate with Chris, Richard and Shivang for testing and cabling.
 - Continue CAD model (see next slide)



Drawings first version :

[https://github.com/HawaiianMuonBeamline/HMB_CAD/blob/master/HMB_V3.1000/Board supports/Acrylic panes for support v0.PDF](https://github.com/HawaiianMuonBeamline/HMB_CAD/blob/master/HMB_V3.1000/Board%20supports/Acrylic%20panes%20for%20support%20v0.PDF)

To do (for the CAD model)

- SCI FI Board design. Currently Working on the tracking detectors model.
- Calorimeter configuration.
 - 4 for veto region
 - 2 for energy measurement (Gary's suggestion)
- Scintillators paddle trigger

