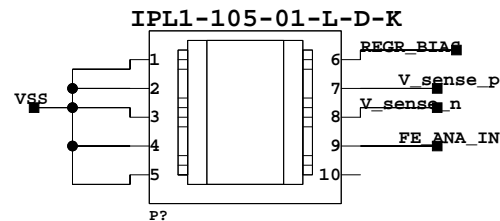
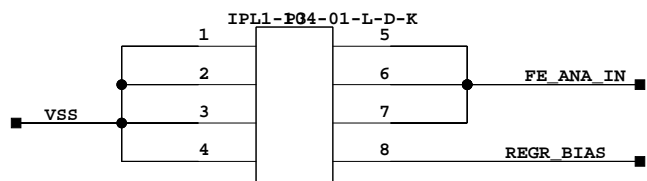
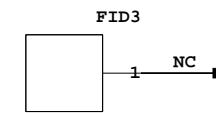
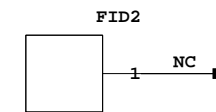
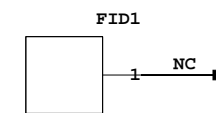
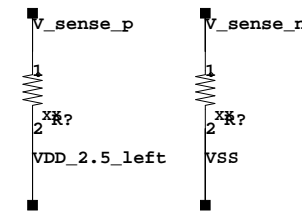


4

4



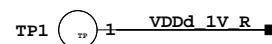
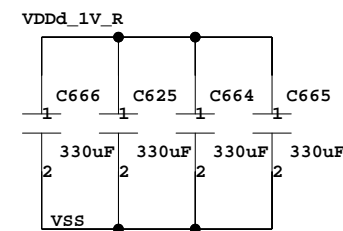
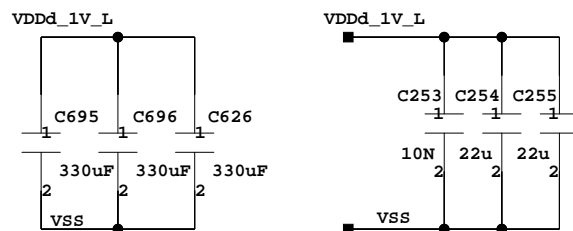
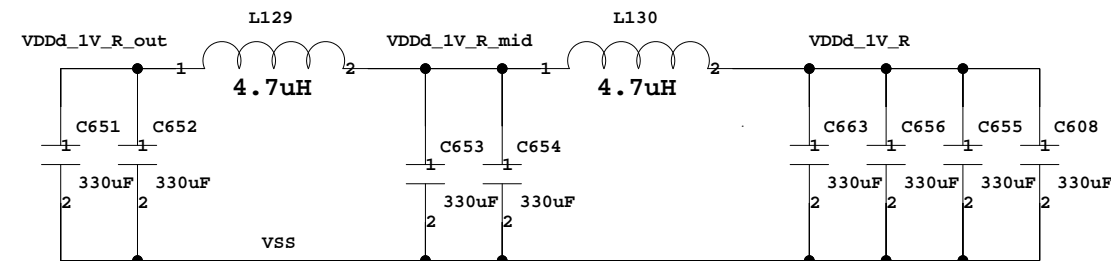
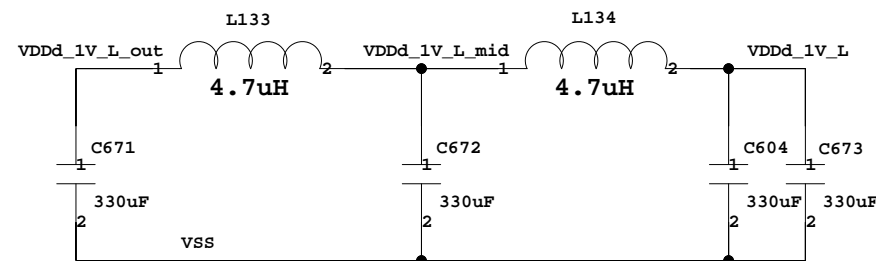
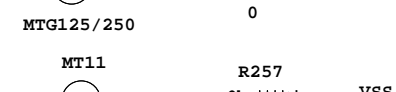
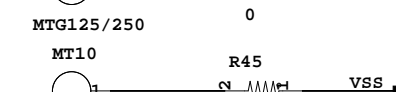
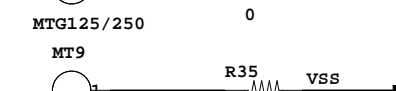
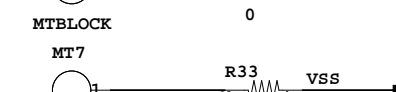
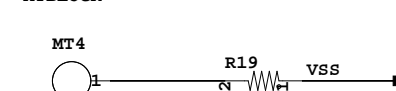
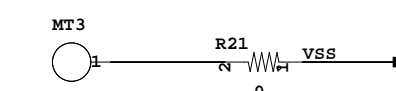
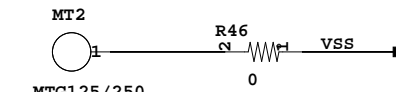
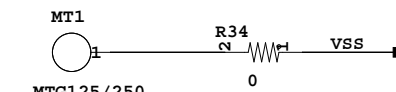
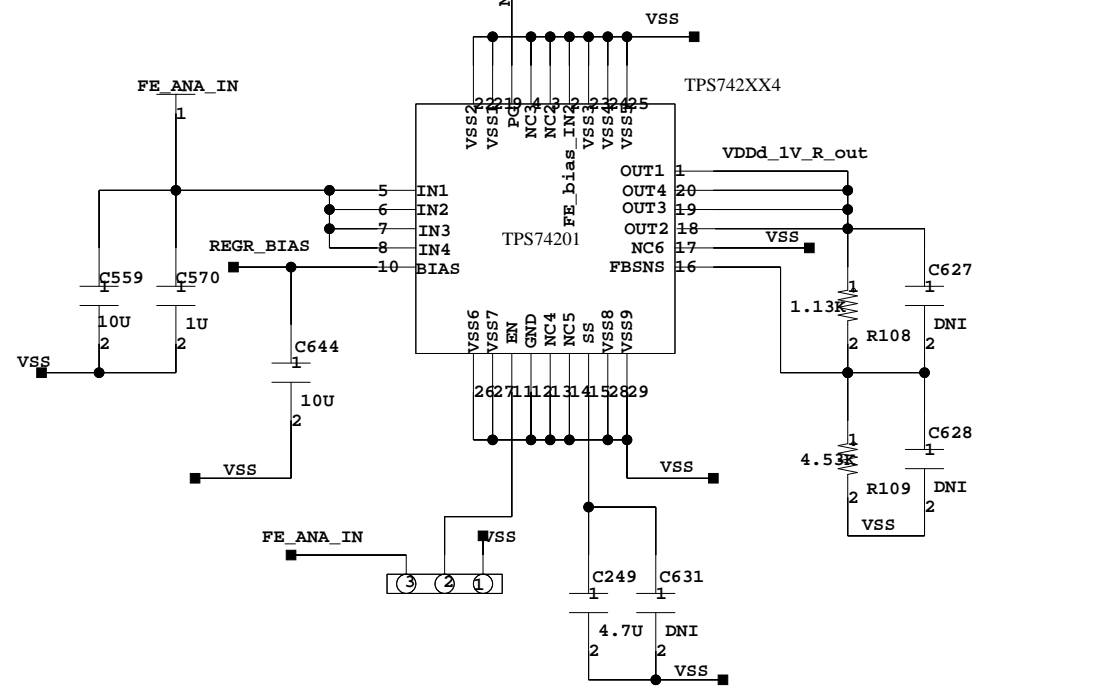
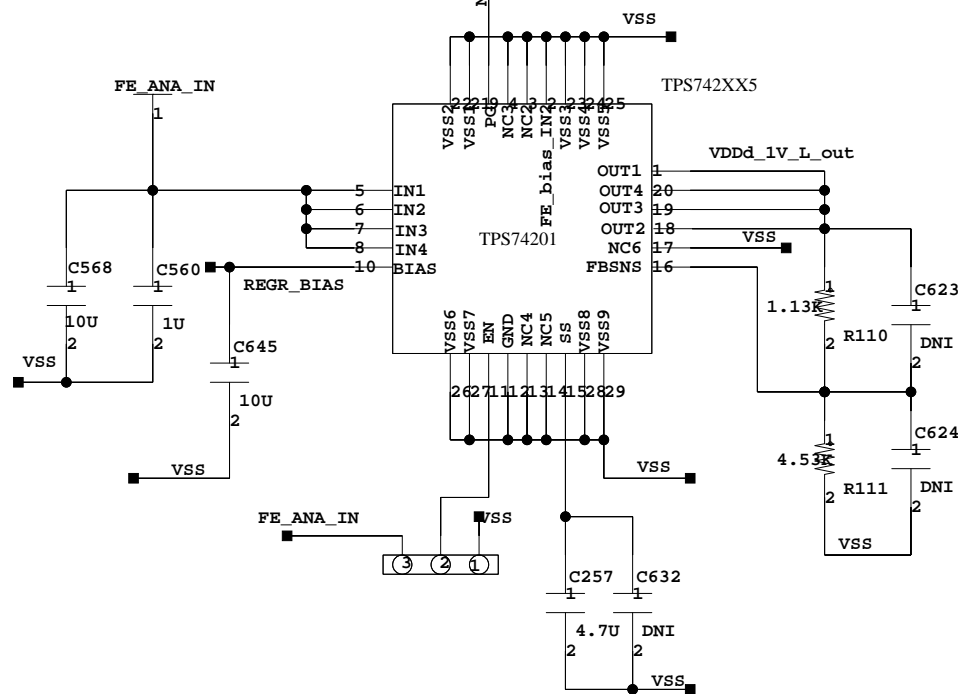
sense lines. Keep resistors close to asic. in between both



Ground? but keep close to cryo

Left Digital 1V

Right Digital 1V



COMPANY					
BROOKHAVEN NATIONAL LABORATORY					
TITLE					
DUNE ANALOG MOTHER BOARD					
SIZE	B	REV	SHEET	1	OF 18
DRAWN	SHANSHAN GAO/Jack Fried		DATE	01/10/2019:14:42	

A

B

C

D

E

F

3

3

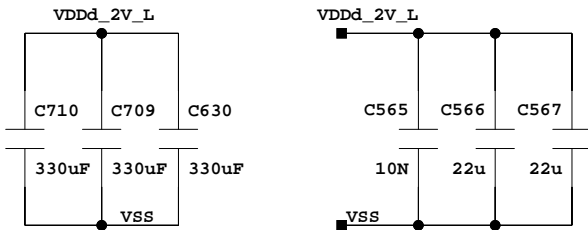
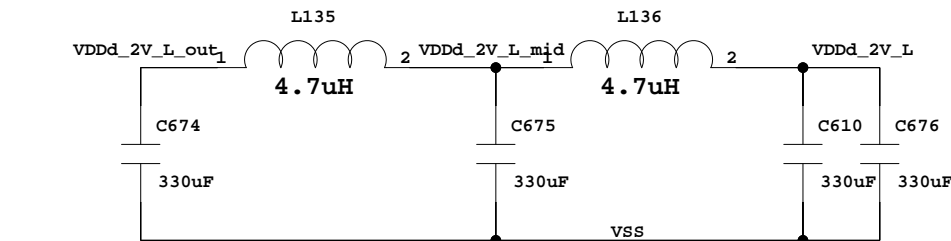
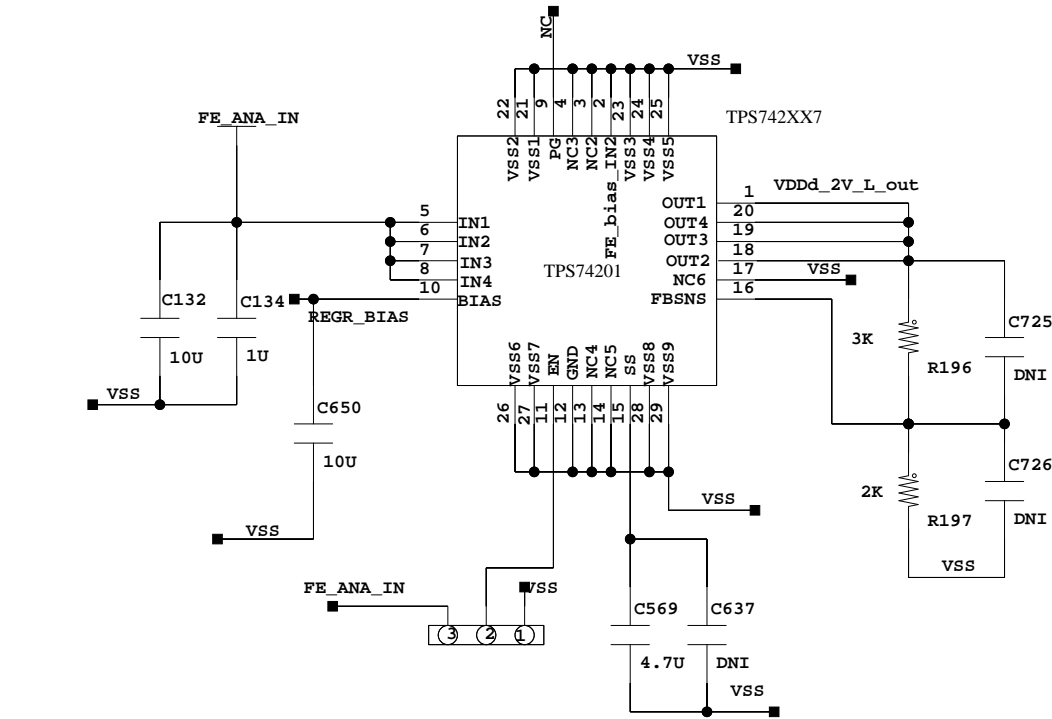
2

2

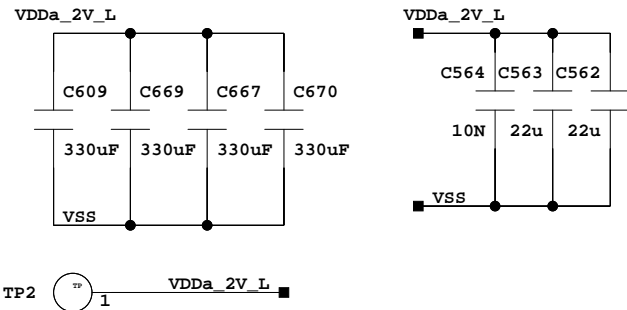
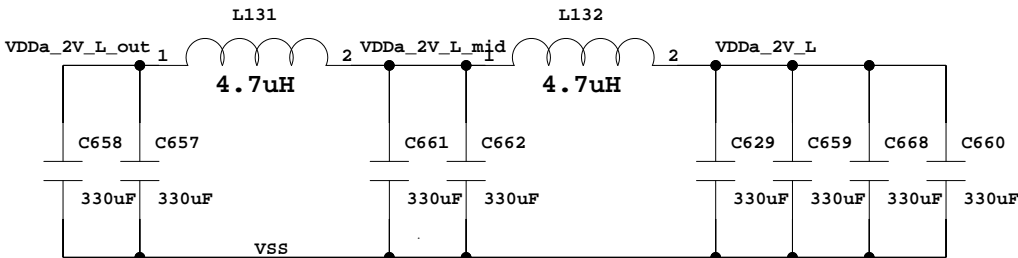
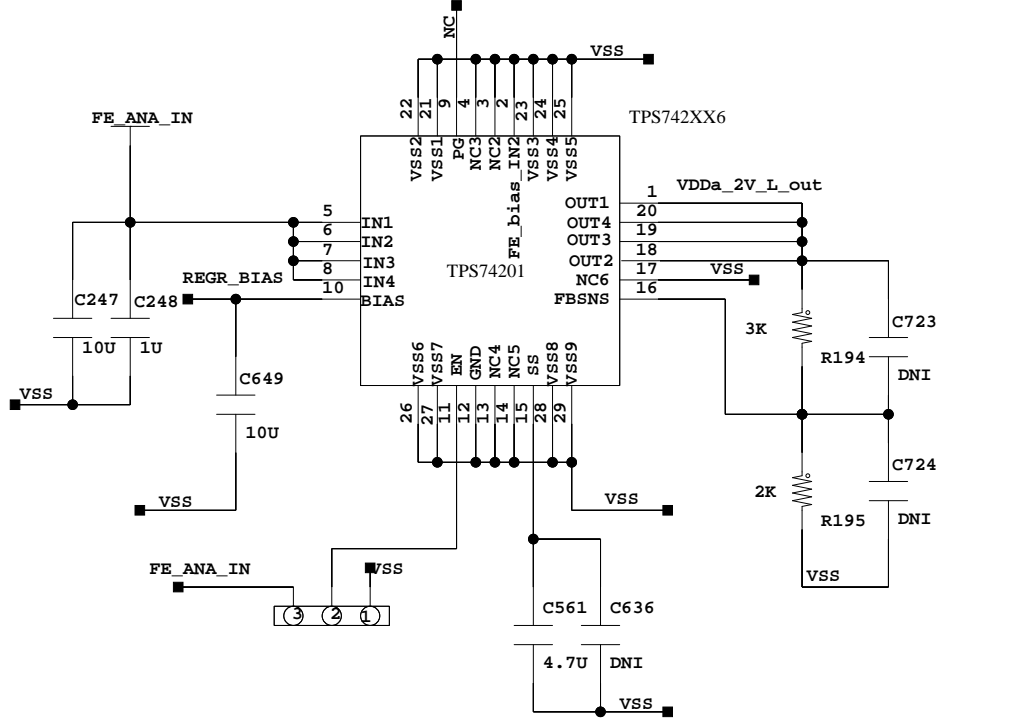
1

1

Left Digital 2V



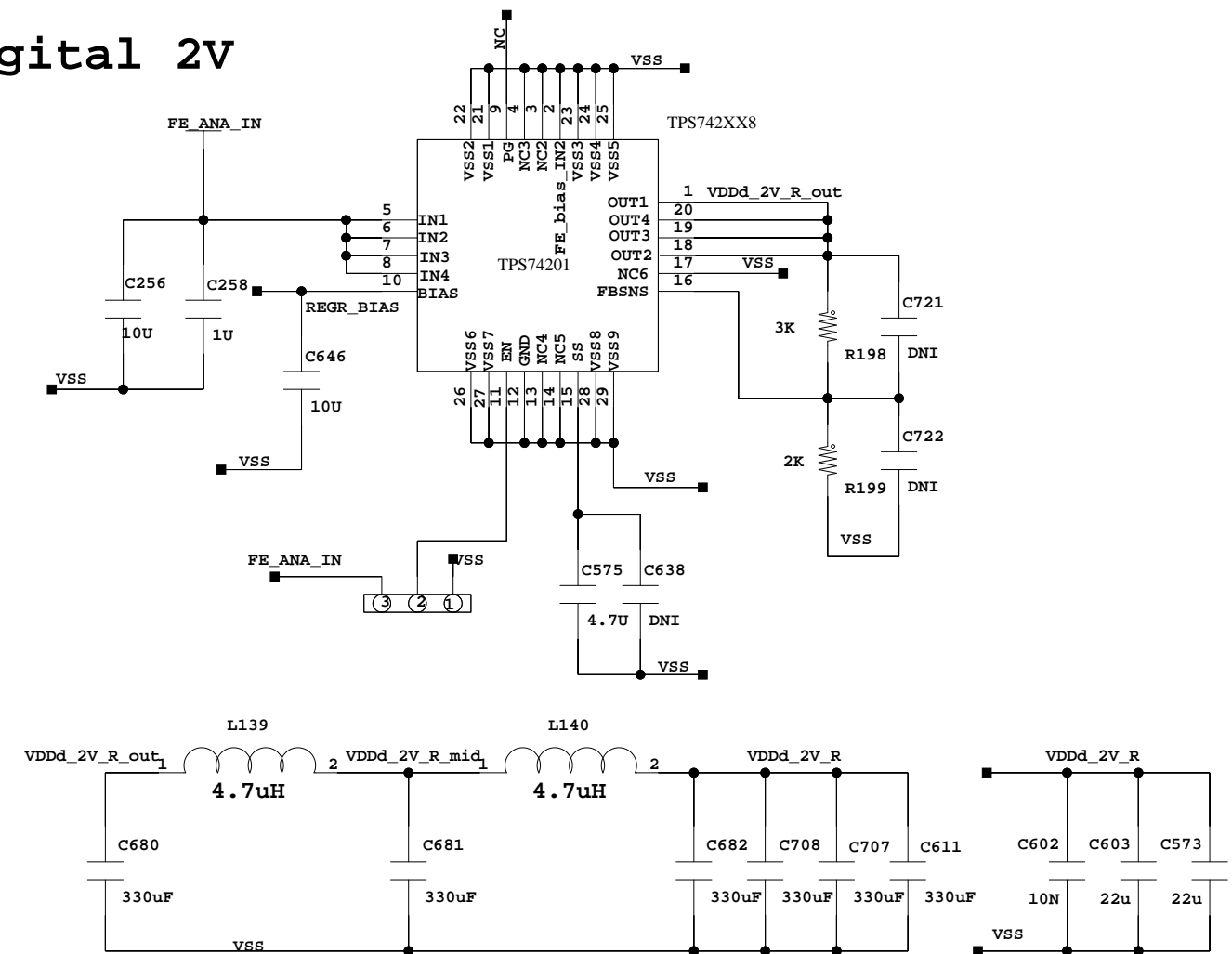
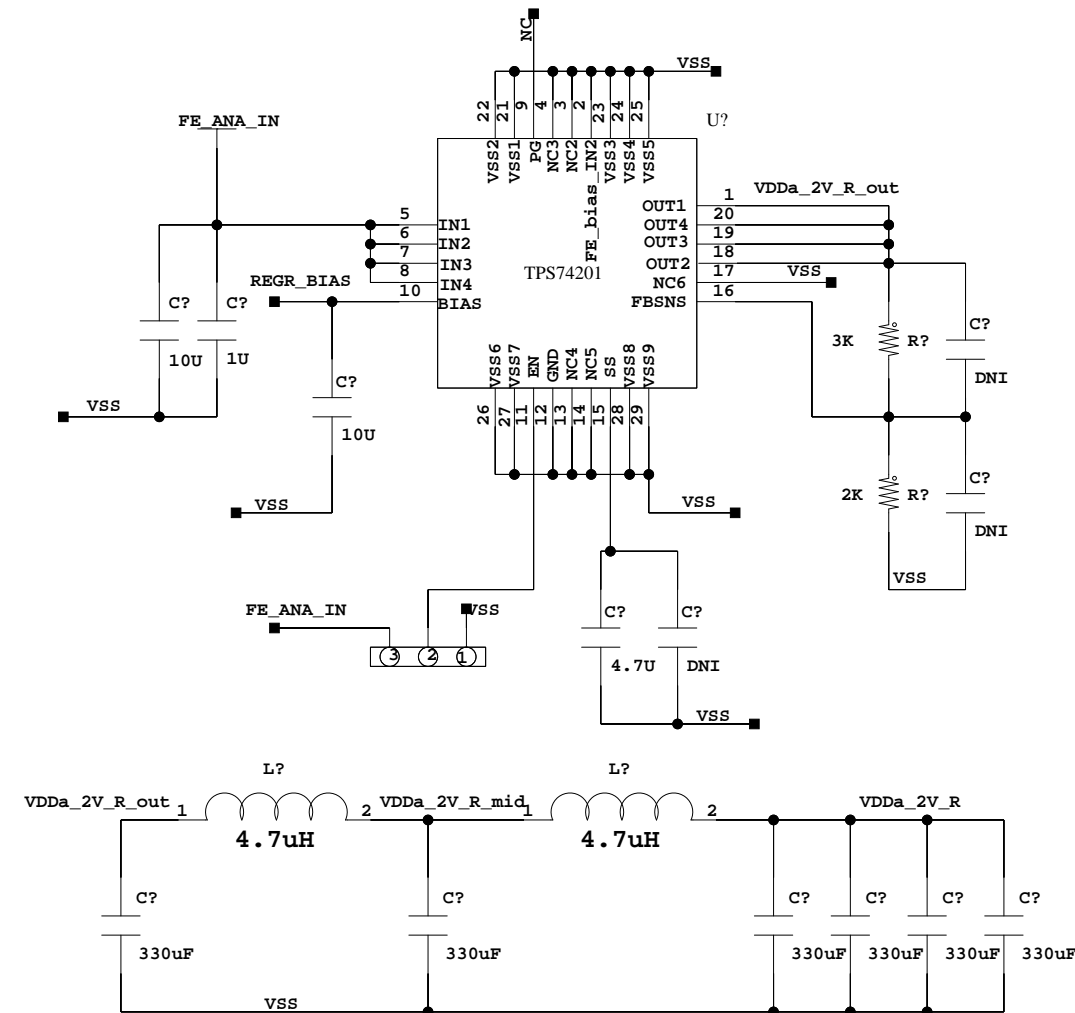
Left Analog 2V



COMPANY					
BROOKHAVEN NATIONAL LABORATORY					
TITLE					
DUNE ANALOG MOTHER BOARD					
SIZE	B	REV	SHEET	3	OF 18
DRAWN	SHANSHAN GAO/Jack Fried		DATE	01/10/2019:14:43	

Right Digital 2V

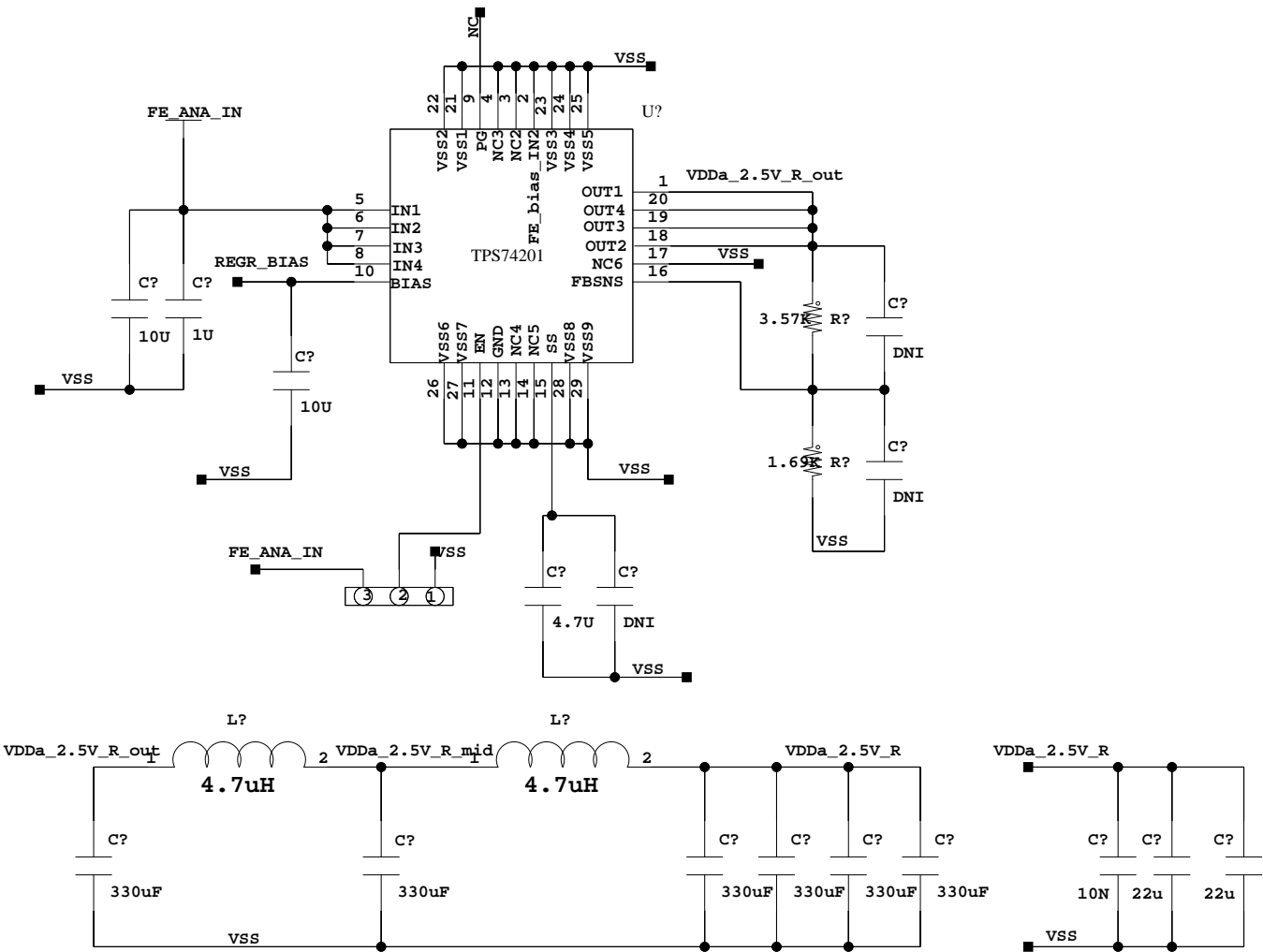
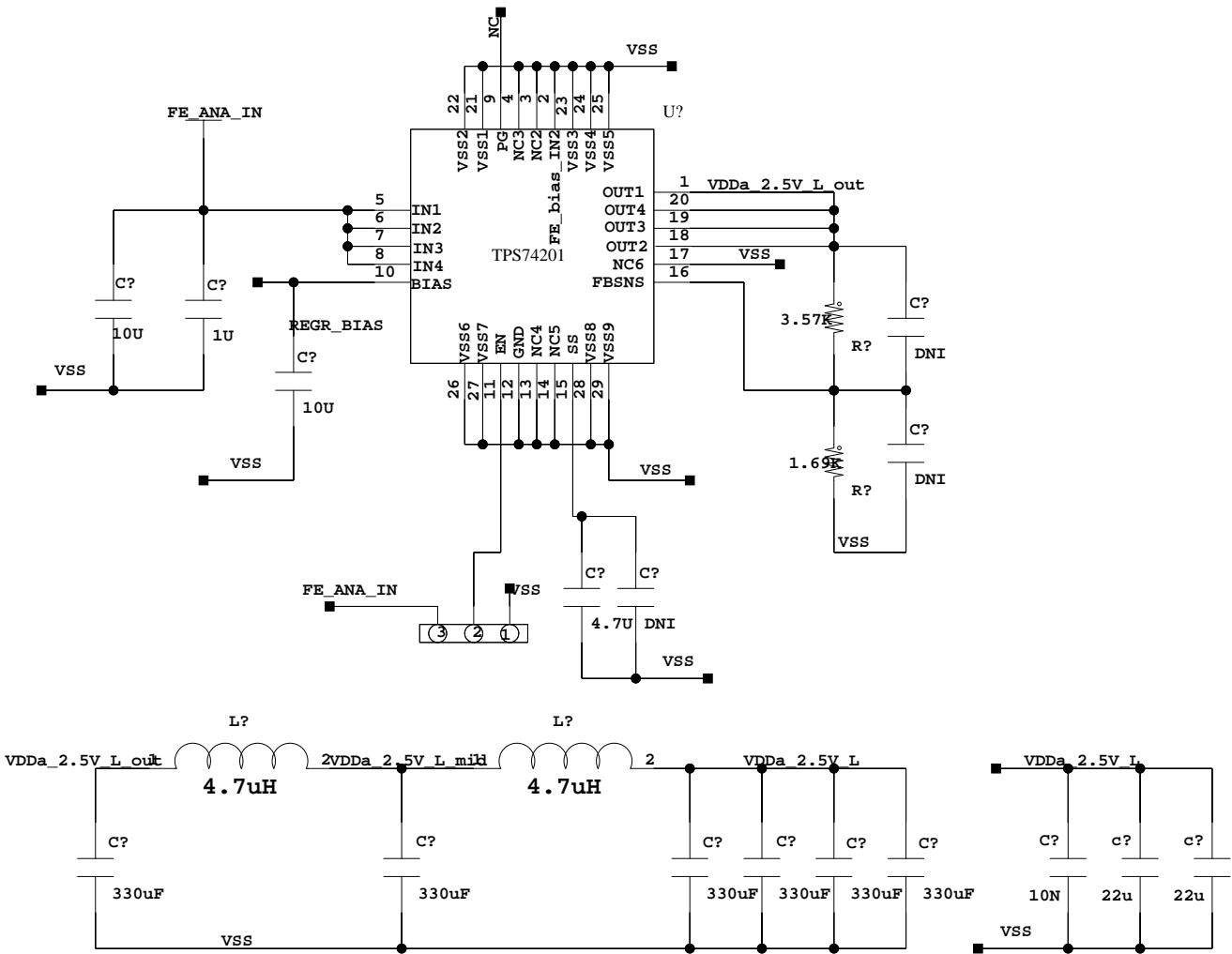
Right Analog 2V



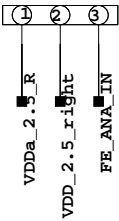
COMPANY				
BROOKHAVEN NATIONAL LABORATORY				
TITLE				
DUNE ANALOG MOTHER BOARD				
SIZE	B	REV	SHEET	4 OF 18
DRAWN	SHANSHAN GAO/Jack Fried		DATE	01/10/2019:14:47

Right Analog 2.5V

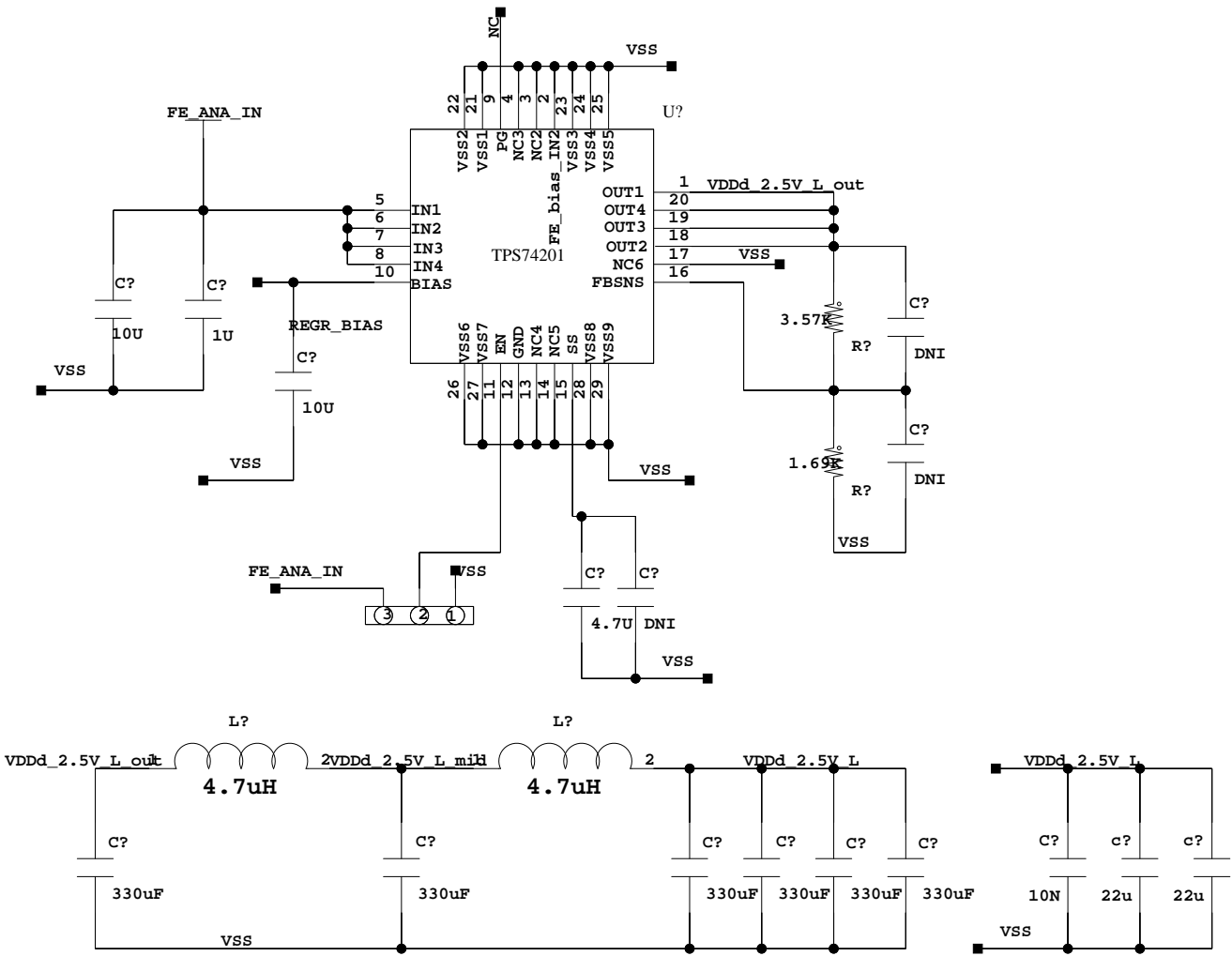
Left Analog 2.5V



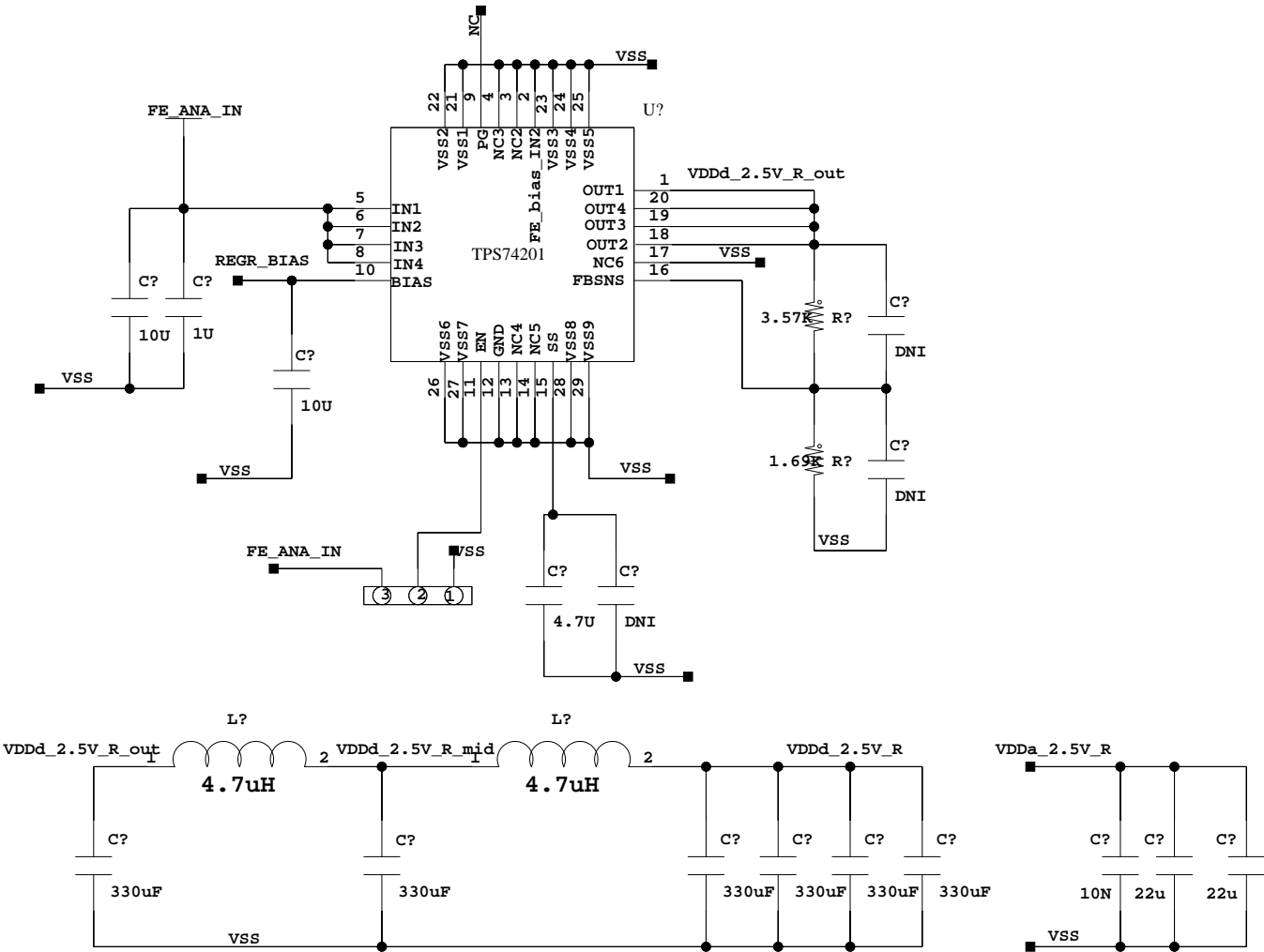
Select raw power in or ldo 2.5 out



Left Digital 2.5V



Right Digital 2.5V



Select raw power in or ldo 2.5 out





J1

SSW-132-21-G-T

CH0_6

CH1_6

CH2_6

CH3_6

CH4_6

CH5_6

CH6_6

CH7_6

CH8_6

CH9_6

CH10_6

CH11_6

CH12_6

CH13_6

CH14_6

CH15_6

CH0_5

CH1_5

CH2_5

CH3_5

CH4_5

CH5_5

CH6_5

CH7_5

CH8_5

CH9_5

CH10_5

CH11_5

CH12_5

CH13_5

CH14_5

CH15_5

VSS

94

92

91

88

86

85

82

80

79

76

74

73

70

68

67

64

62

61

58

56

55

52

50

49

46

44

43

40

38

37

34

32

31

28

26

25

22

20

19

16

14

13

10

8

7

4

2

1

CH15_8

CH14_8

CH13_8

CH12_8

CH11_8

CH10_8

CH9_8

CH8_8

CH7_8

CH6_8

CH5_8

CH4_8

CH3_8

CH2_8

CH1_8

CH0_8

CH15_7

CH14_7

CH13_7

CH12_7

CH11_7

CH10_7

CH9_7

CH8_7

CH7_7

CH6_7

CH5_7

CH4_7

CH3_7

CH2_7

CH1_7

CH0_7

VSS

96

95

93

90

89

87

84

83

81

78

77

75

72

71

69

66

65

63

60

59

57

54

53

51

48

47

45

42

41

39

36

35

33

30

29

27

24

23

21

18

17

15

12

11

9

6

5

3

J2

COMPANY

BROOKHAVEN NATIONAL LABORATORY

TITLE

DUNE ANALOG MOTHER BOARD

SIZE

B

REV

SHEET

5

OF

18

DRAWN

SHANSHAN GAO/Jack Fried

DATE

21/12/2016:07:21

A

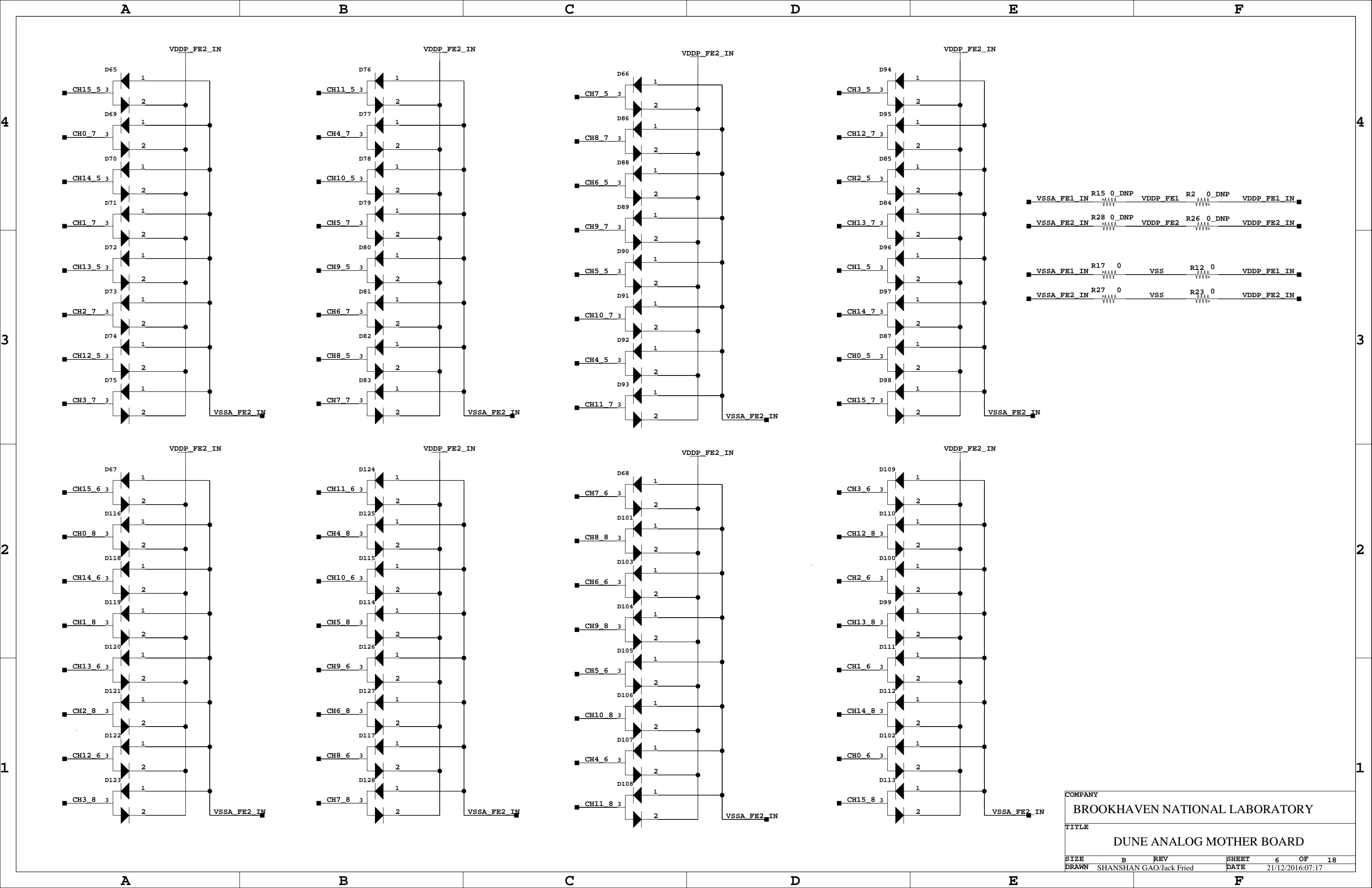
B

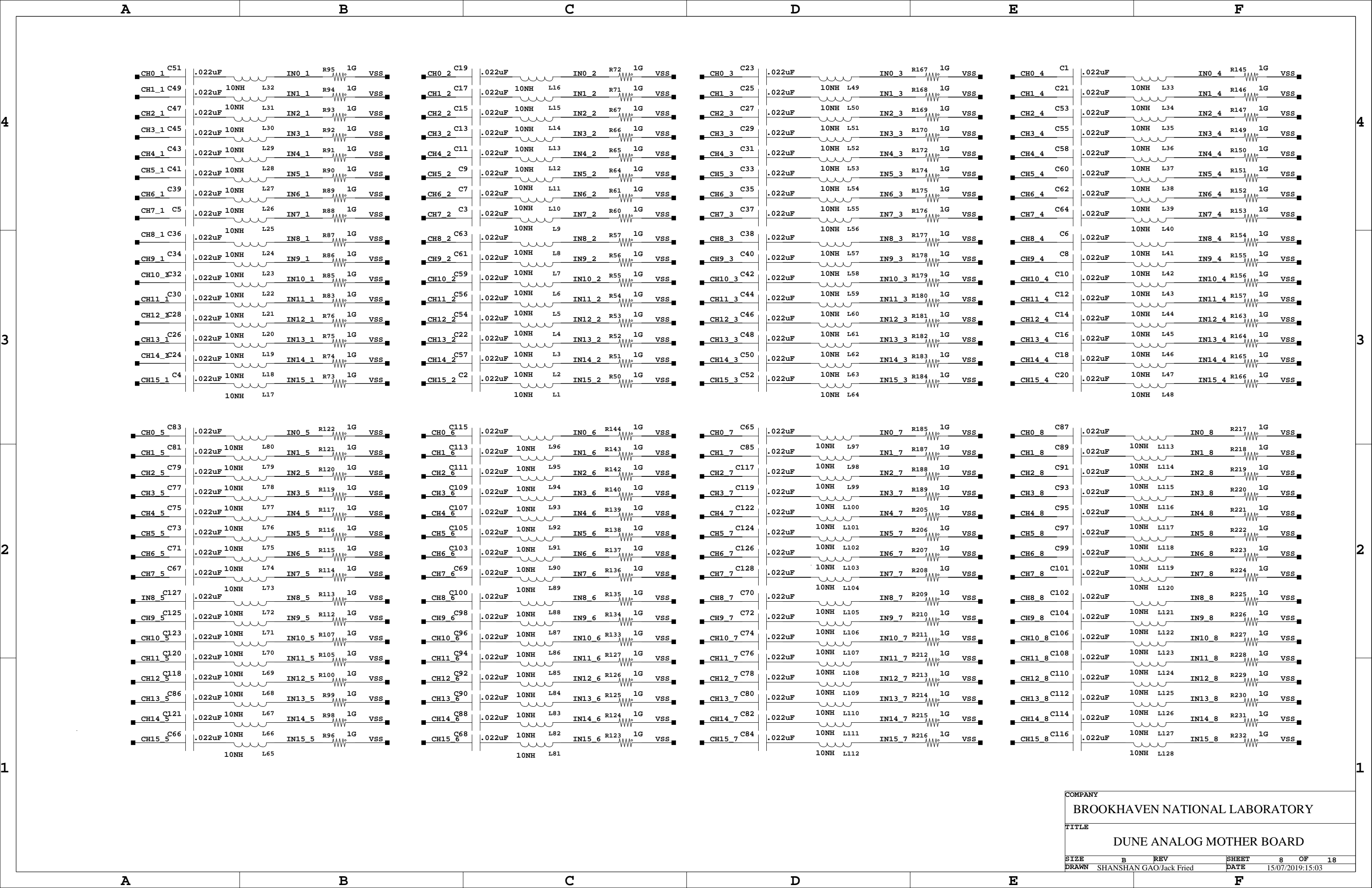
C

D

E

F

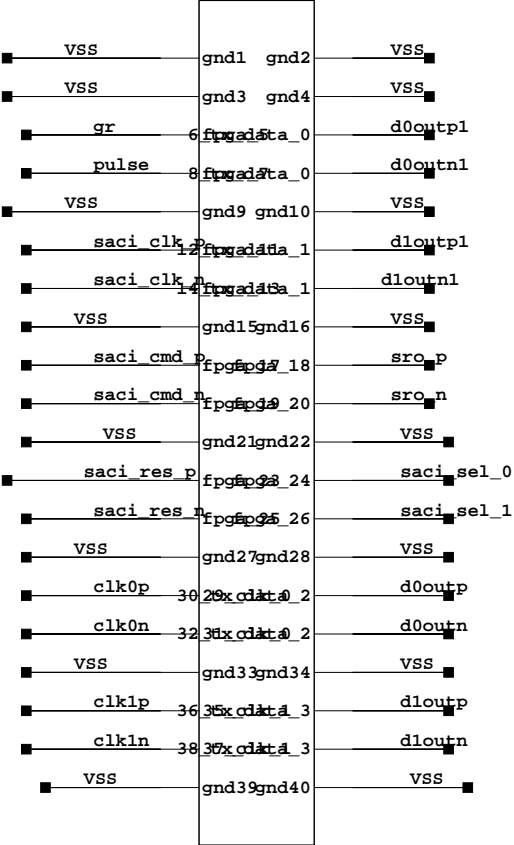








WIB IN



Ext. Monitor

