

6

5

4

3

2

1

D

D

C

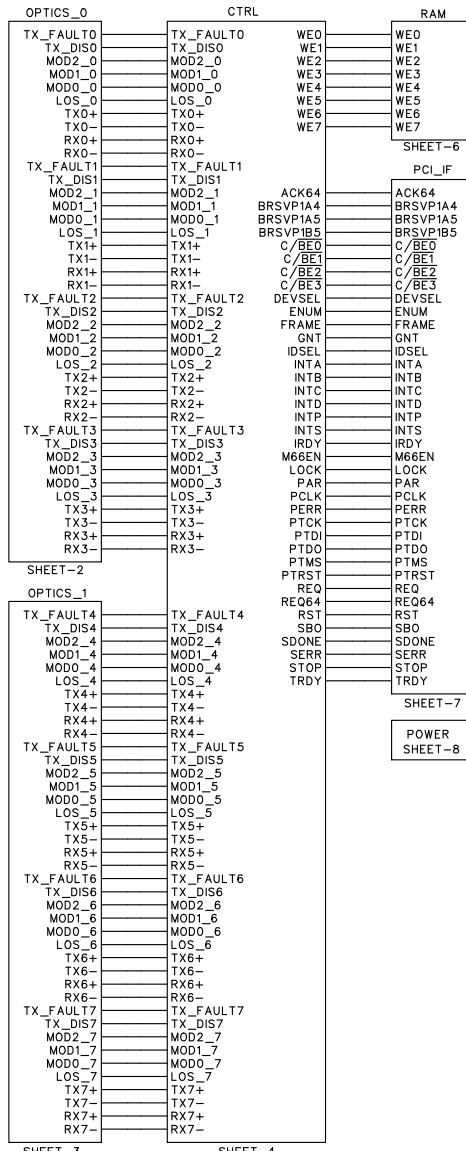
C


B

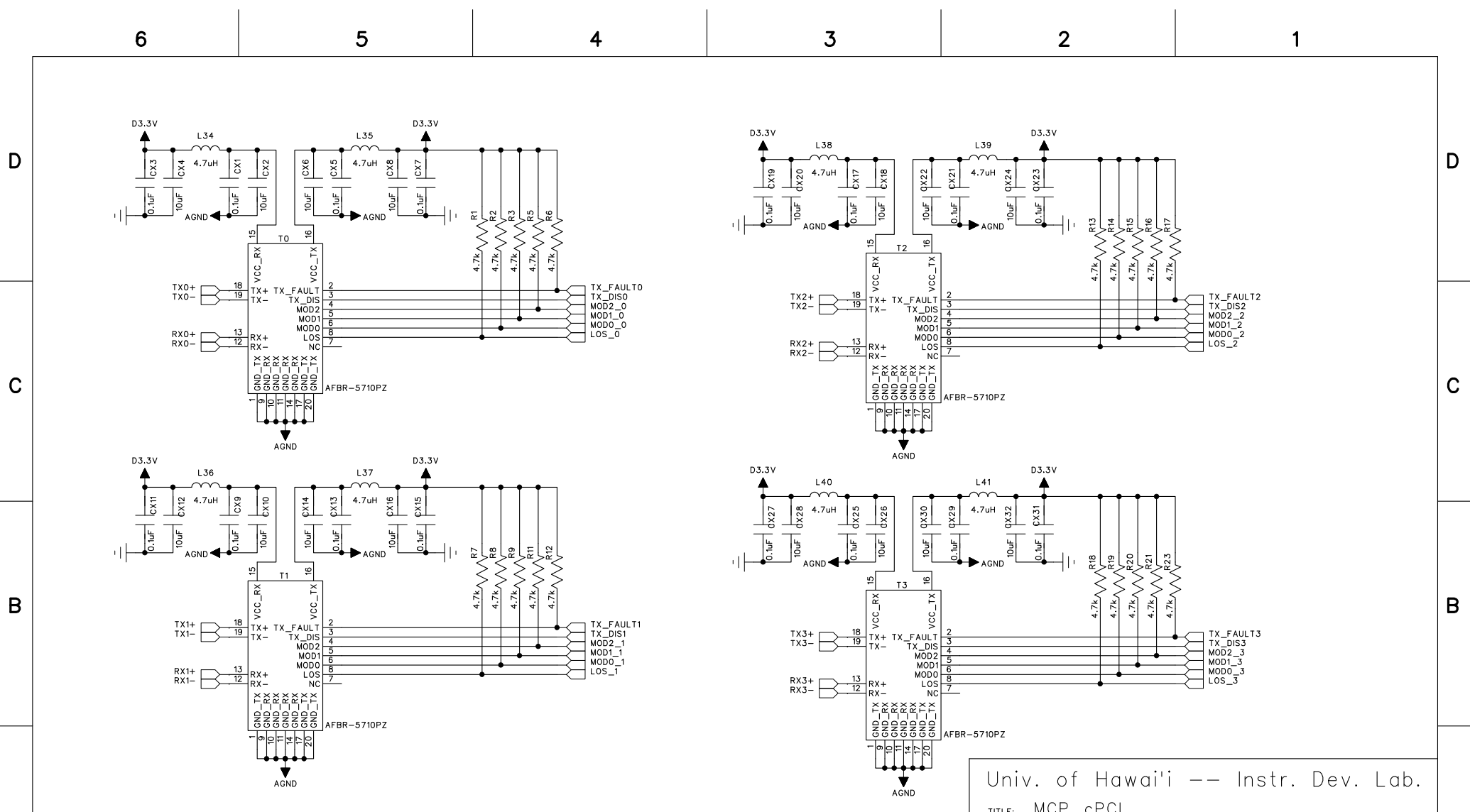
B

A

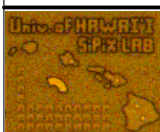
A



Univ. of Hawai'i -- Instr. Dev. Lab.			
TITLE: MCP_cPCI			
	Design:	Page Description:	REV:
	LLR	Top Level Sheet	C
DATED: 29-OCT-2008		[TOP]	SHEET: 1 OF 9

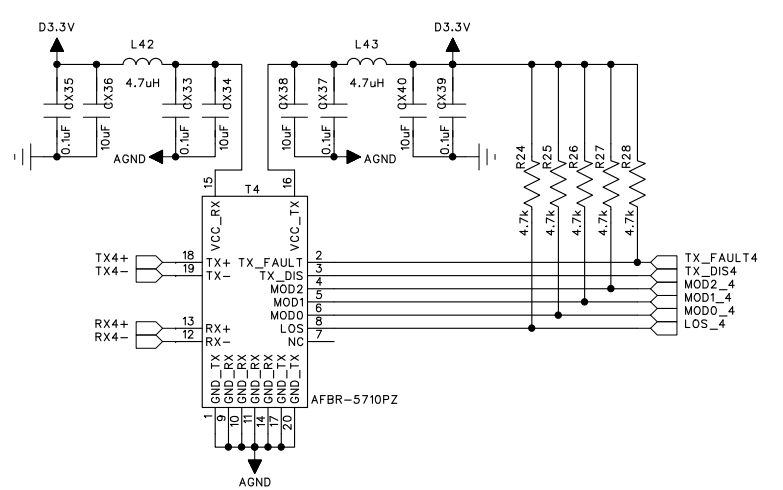


Univ. of Hawai'i -- Instr. Dev. Lab.
 TITLE: MCP_cPCI

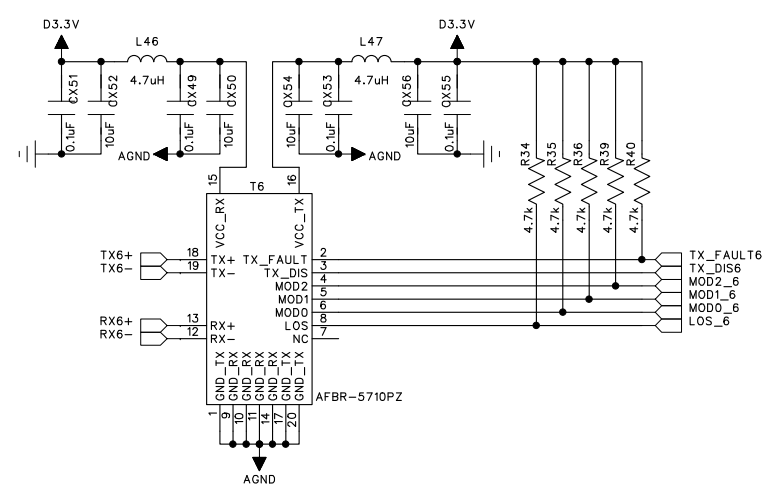
	Design: LLR	Page Description: Fiber Optic Transceiver Block	REV: C
DATED: 29-NOV-2007		[OPTICS_0]	SHEET: 2 OF 9

6 5 4 3 2 1

D



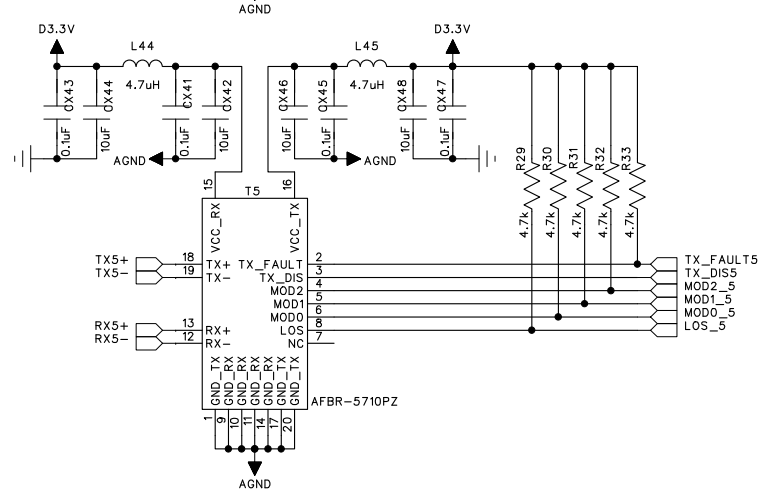
C



D

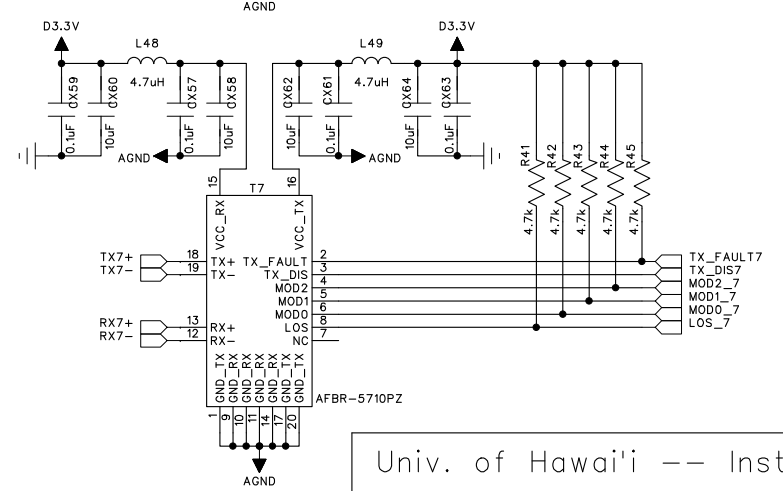
C

B




B

A



A

Univ. of Hawai'i -- Instr. Dev. Lab.
TITLE: MCP_cPCI

	Design:	Page Description:	REV:
	LLR	Fiber Optic Tranceiver Block	C
DATED: 29-NOV-2007		[OPTICS_1]	SHEET: 3 OF 9

6

5

4

3

2

1

D

D

C

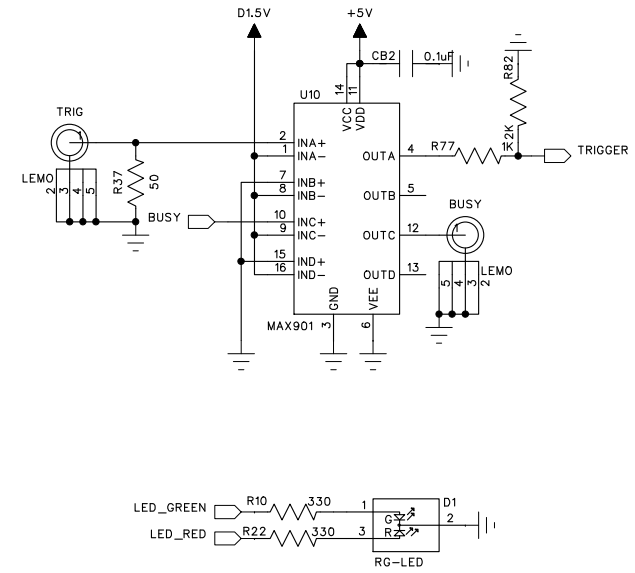
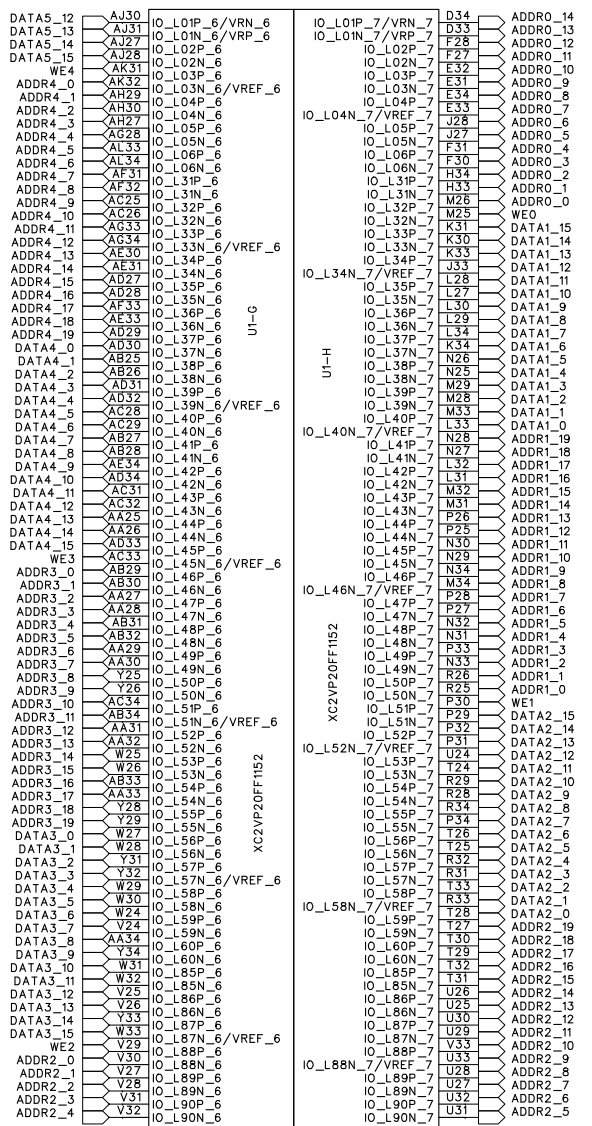
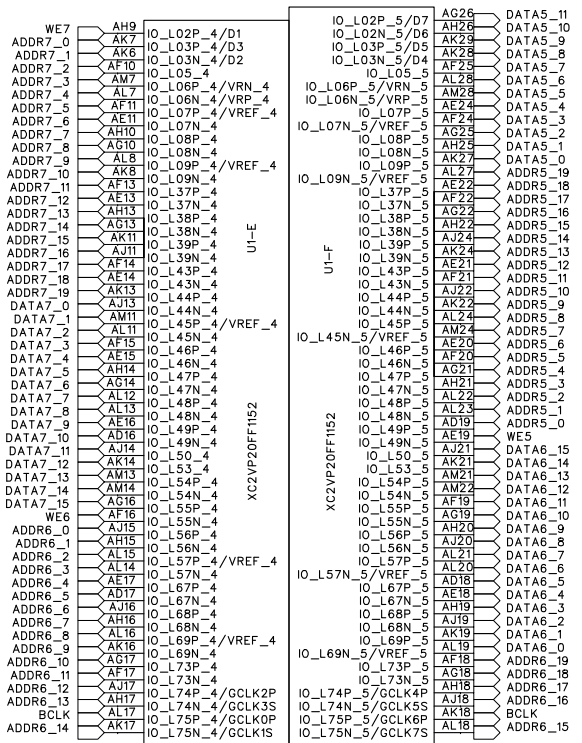
C

B


B

A

A



Univ. of Hawai'i -- Instr. Dev. Lab.
 TITLE: MCP_cPCI

	Design:	Page Description:	REV:
	LLR	Cont. Control Block	C

DATED: 06-DEC-2007 [CONT_CTRL] SHEET: 5 OF 9

6 5 4 3 2 1

D

C

B

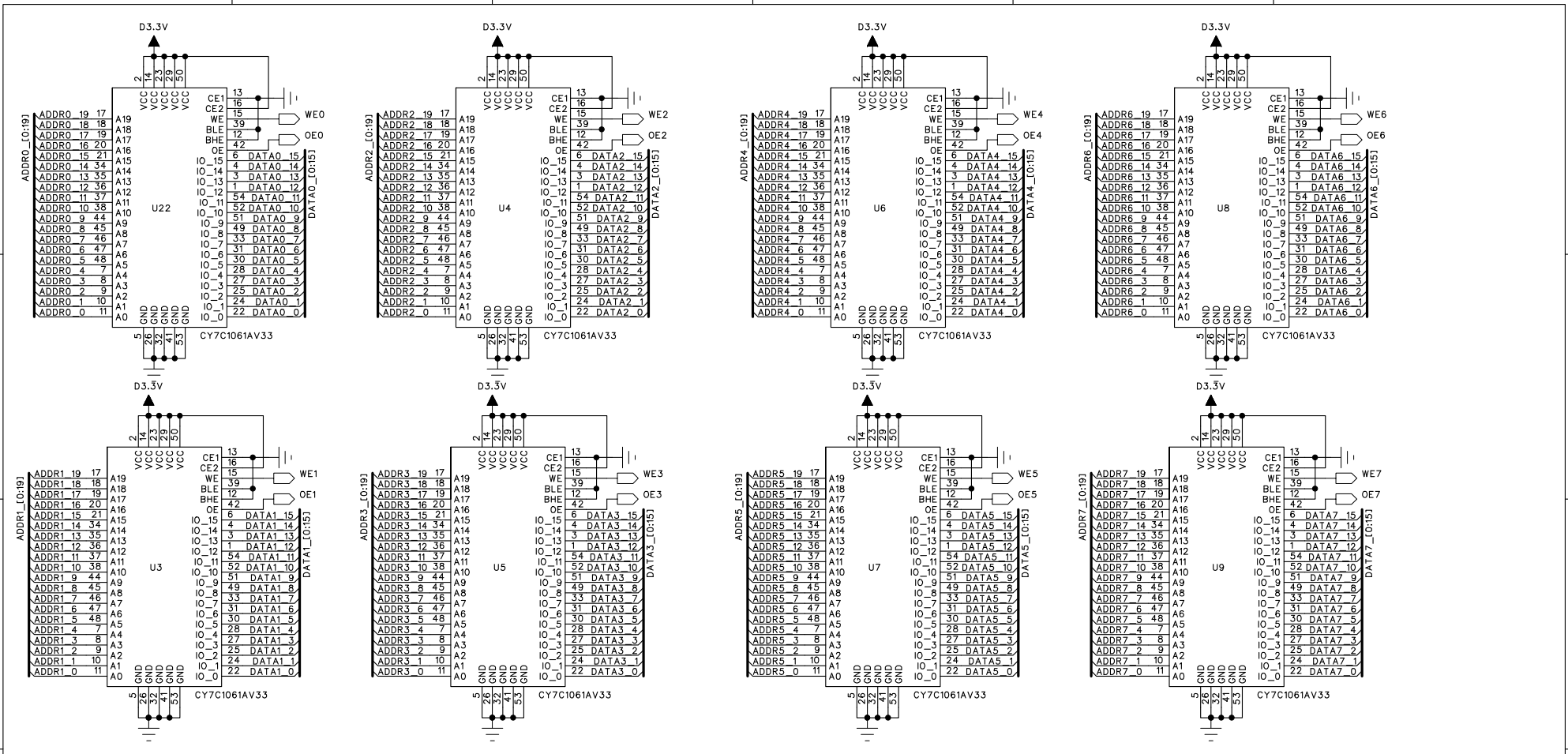
A

D


C

B

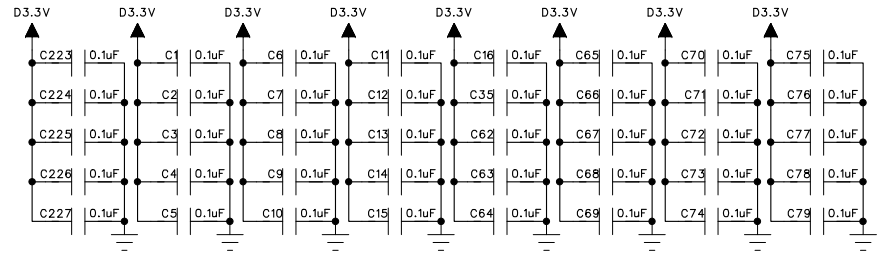
A



Univ. of Hawai'i -- Instr. Dev. Lab.
 TITLE: MCP_cPCI

	Design:	Page Description:	REV:
	LLR	RAM Block	C

DATED: 29-OCT-2008 [RAM] SHEET: 6 OF 9



6 5 4 3 2 1

D

C

B

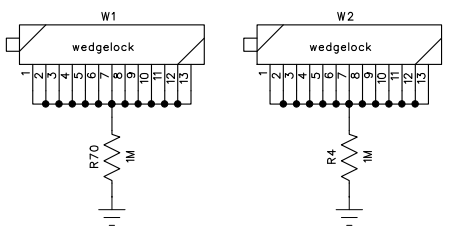
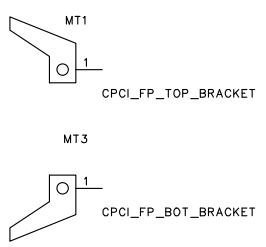
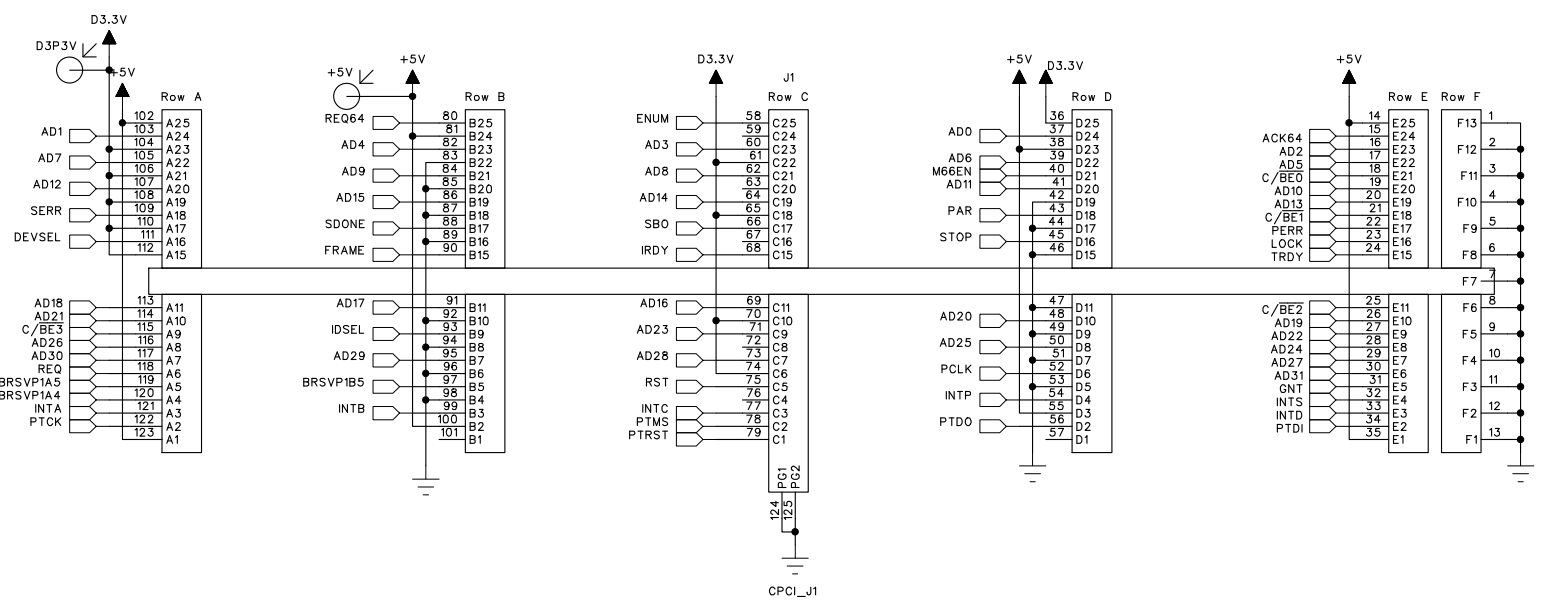
A

D


C

B

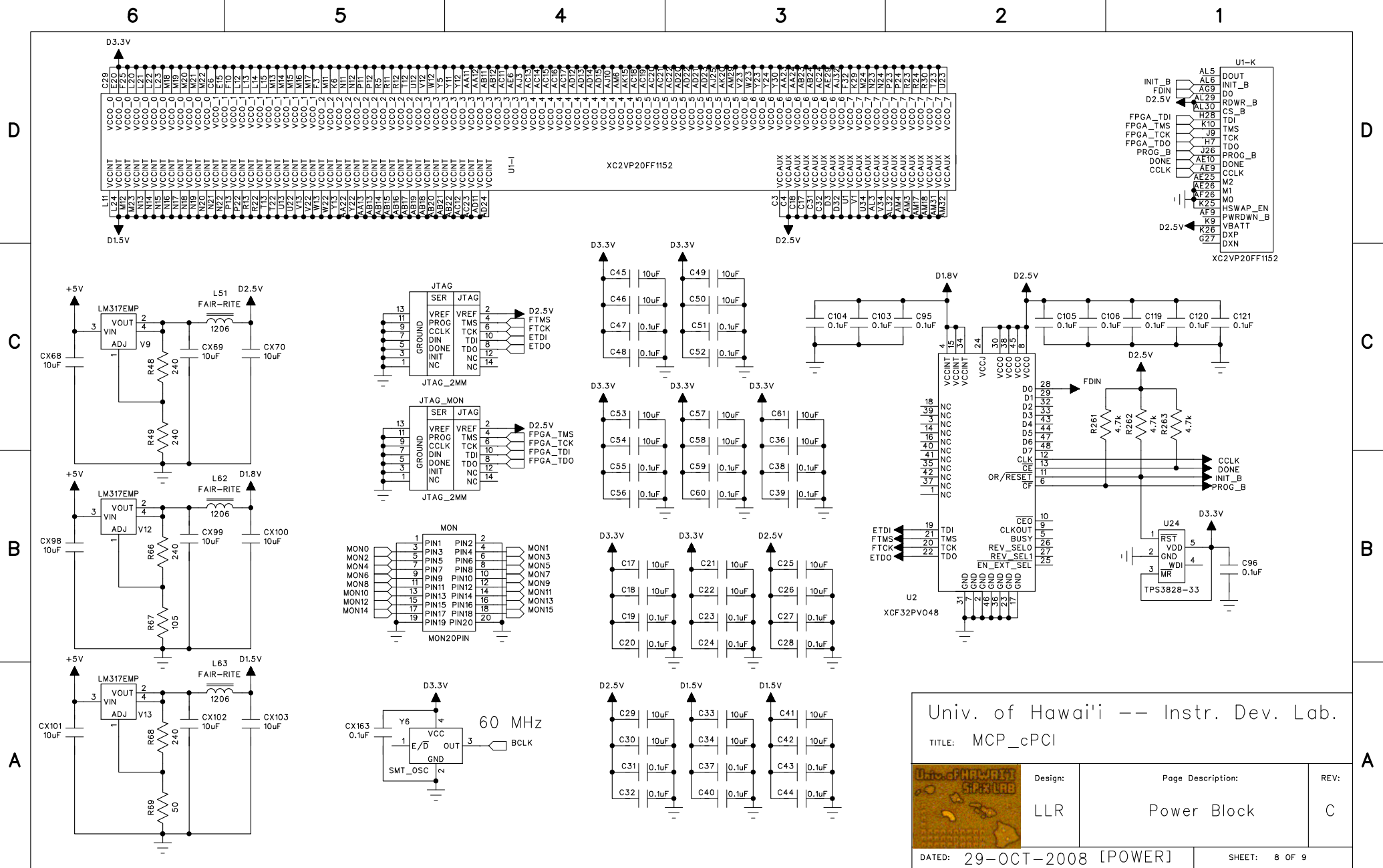
A




Univ. of Hawai'i -- Instr. Dev. Lab.
TITLE: MCP_cPCI

	Design:	Page Description:	REV:
	LLR	PCI bus interface	C

DATED: 29-NOV-2007 [PCI_IF] SHEET: 7 OF 8



Univ. of Hawai'i -- Instr. Dev. Lab.
 TITLE: MCP_cPCI

	Design:	Page Description:	REV:
	LLR	Power Block	C

DATED: 29-OCT-2008 [POWER] SHEET: 8 OF 9

6

5

4

3

2

1

D

D

C

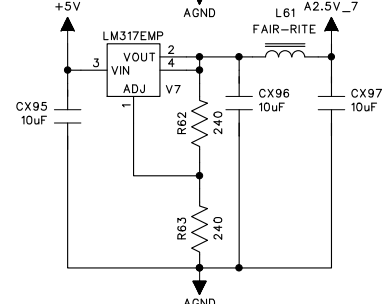
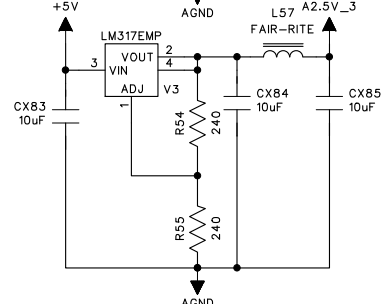
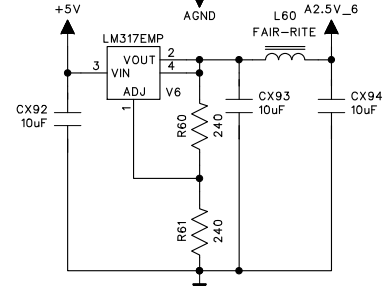
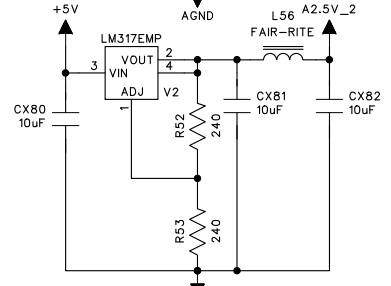
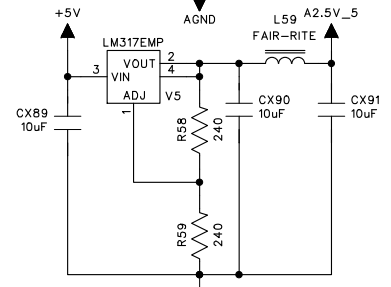
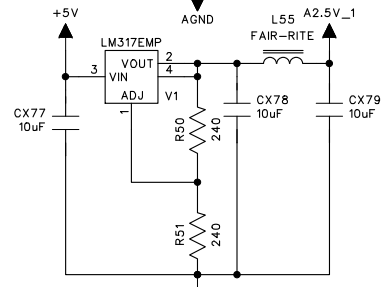
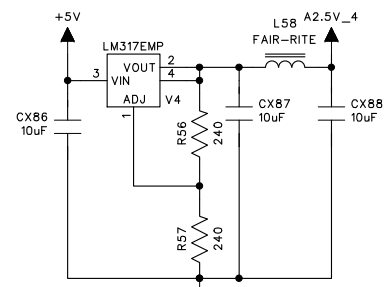
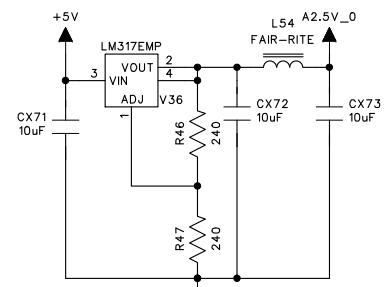
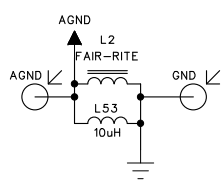
C


B

B

A

A



Univ. of Hawai'i -- Instr. Dev. Lab.		
TITLE: MCP_cPCI		
	Design: LLR	Page Description: Analog Power Block
DATED: 29-NOV-2007 [A_POWER]		REV: C
SHEET: 9 OF 9		